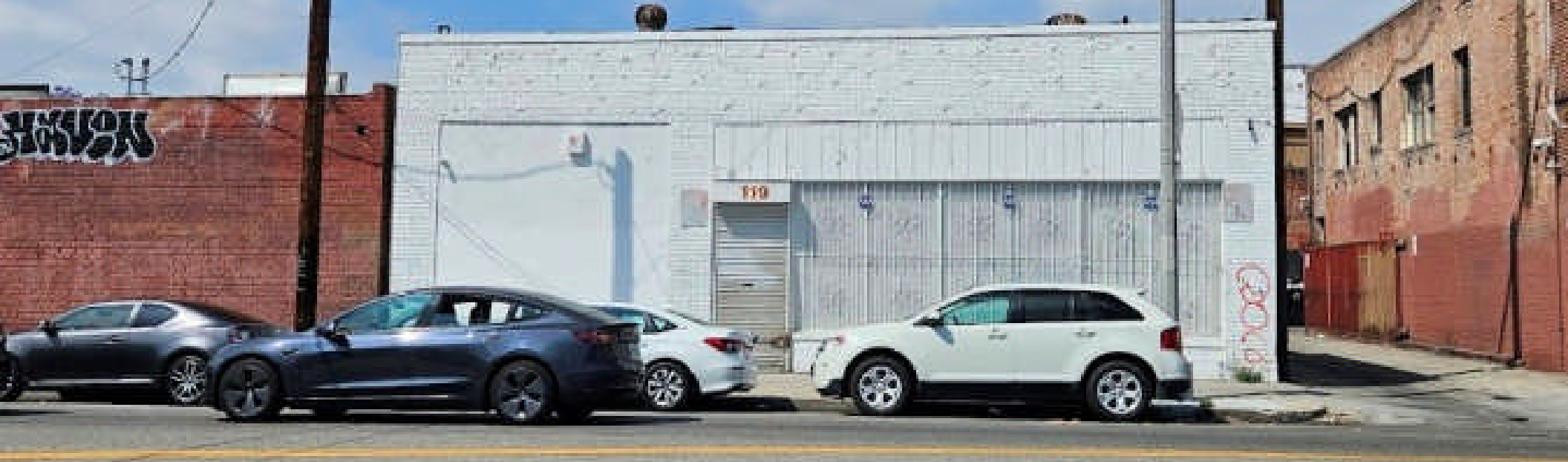


# For Lease

119 W Jefferson Blvd  
Los Angeles, CA 90007

# ±6,000 SF Industrial



For more information, please contact:

**Daniel Park**

(213) 446-0396

[Danielpark777@hotmail.com](mailto:Danielpark777@hotmail.com)

DRE# 01227056

**PARK** INDUSTRIAL  
SPECIALIZING IN INDUSTRIAL REAL ESTATE SERVICES

Park Industrial Realty  
800 McGarry St, 5<sup>th</sup> Floor  
Los Angeles, CA 90021  
Corporation DRE# 01983713

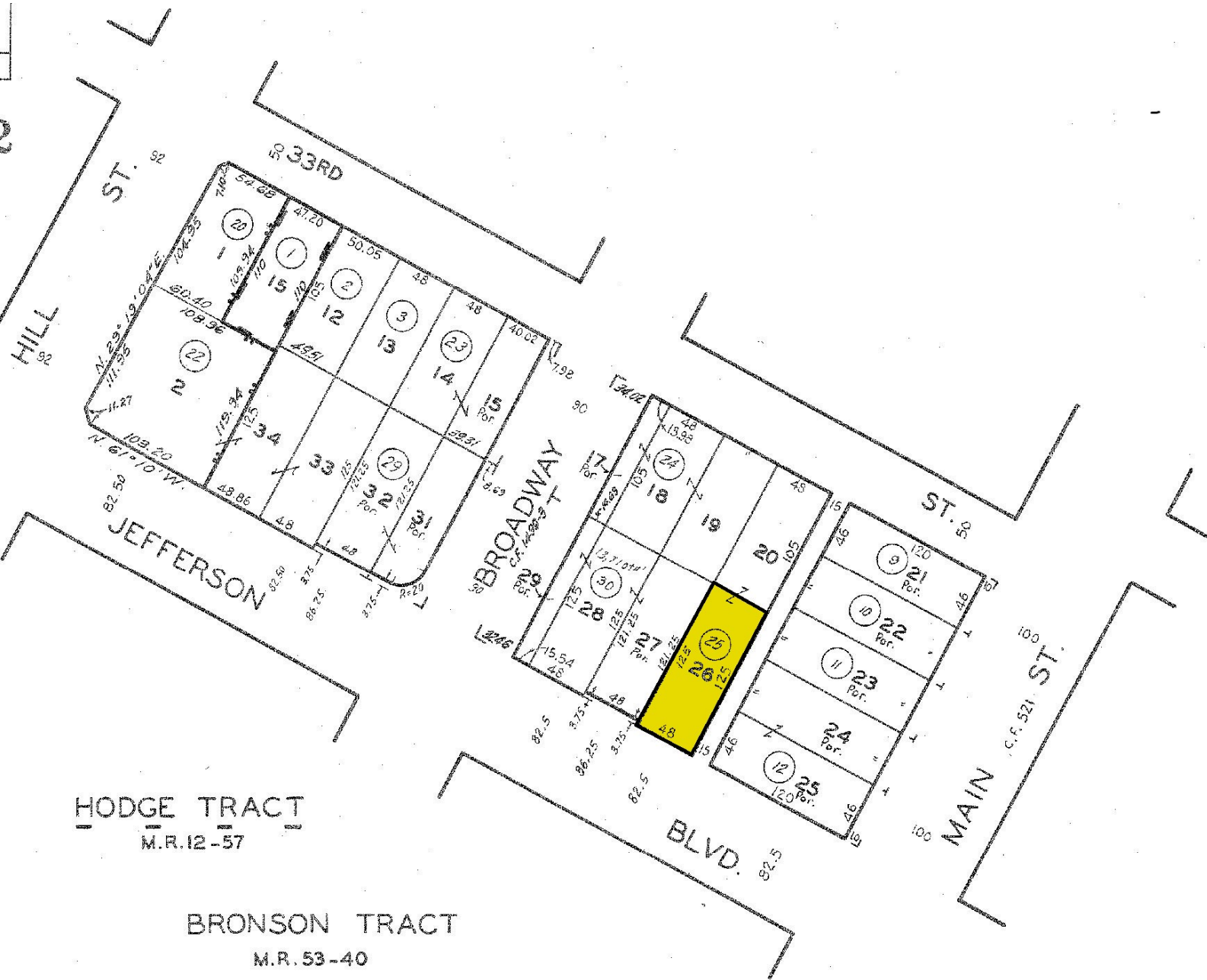
Available SF:	6,000 SF	• Located close Downtown LA
Office SF:	1,100 SF	• Great for manufacturing
Year Built:	1961	• 14 feet high ceiling
Clear Height:	14 feet	• Ground level loading
Power:	400a, 120-240v, 1ph, 3w	• 3 restrooms
# Parking:	4	• 400 amps of electrical power
Loading:	1 GL	• Clear span warehouse
Zoning:	M1	
Lease Rate:	\$5,400 (\$0.90/SF) gross	

All information has been furnished from sources which we deem reliable, but for which we assume no liability. All measurements are approximate. Broker/Owner do not warrant its accuracy. Buyer/Lessee must verify all information.

5122 | 7  
SCALE 1" = 80'

2002

1-4-  
10-14-  
670131  
9105  
91123  
96022  
2002 032



HODGE TRACT  
M.R. 12-57

BRONSON TRACT  
M.R. 53-40

TRACT NO. 23355  
M.B. 832-25-26

CODE  
6658

FOR PREV. ASSA'T. SEE: 33 - 43, 44 & 55

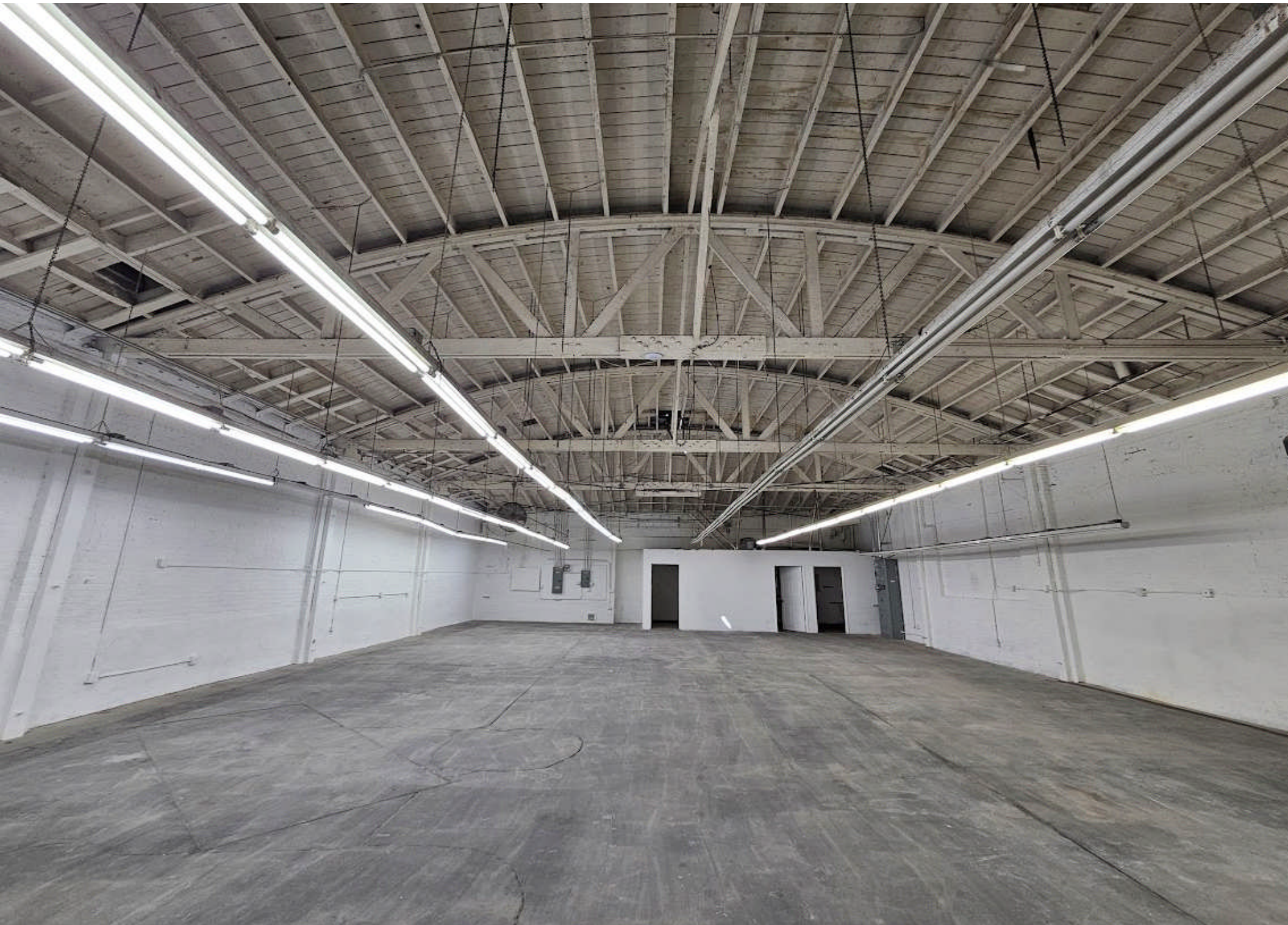


**119 W Jefferson Blvd**

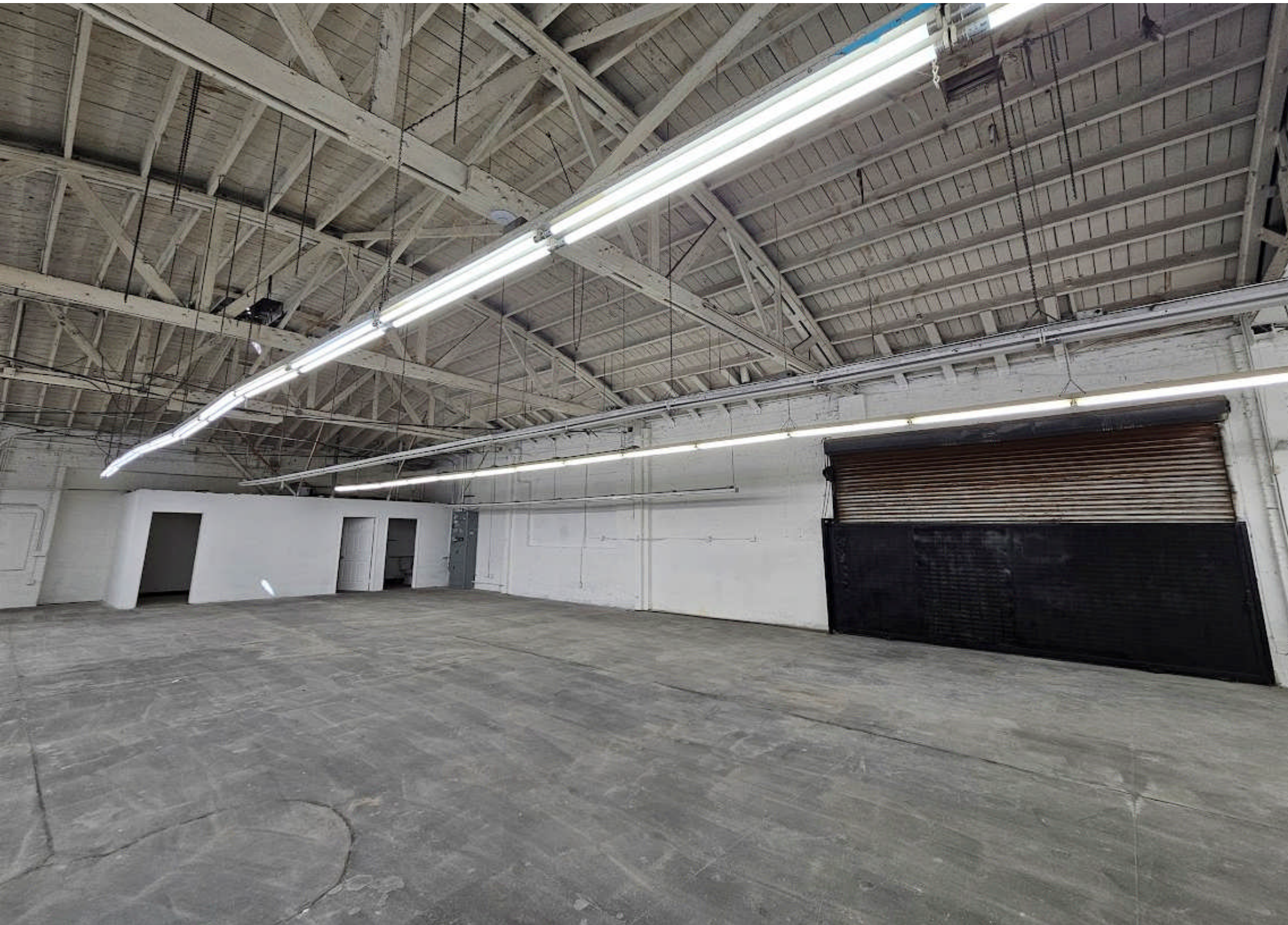


**FOR LEASE | ±6,000 SF Industrial Building**

**119 W Jefferson Blvd**









**FOR LEASE | ±6,000 SF Industrial Building**

**119 W Jefferson Blvd**

