

# 2225 N WILLIAMS AVE / 108 N PAGE ST

Portland, OR 97227

## FOR LEASE



## MAKER SPACE FOR LEASE

### DETAILS

- Suite B:  $\pm$  2,287 SF
- Lease rate: Call brokers for rate
- Zoning: EG1

### FEATURES

- Street parking available
- Mostly open floorplans
- Strategic North Portland location offers easy access to downtown Portland, Vancouver, and Metro

### DEMOGRAPHICS

	1 MILE	3 MILES
Population	27,704	221,055
Households	14,914	115,409
Median Age	38.1	38.2
Median Household Income	\$93,798	\$100,467
Daytime Employees	34,281	224,214



12.09.2025

For more information or a property tour, please contact:

**GREG NESTING**

503.225.8440

GregN@norris-stevens.com

**LUIS MARTIN DEL CAMPO**

503.416.8422

LuisM@norris-stevens.com

## Norris & Stevens

INVESTMENT REAL ESTATE SERVICES



Information contained herein has been obtained from others and considered to be reliable; however, a prospective purchaser or lessee is expected to verify all information to their own satisfaction.

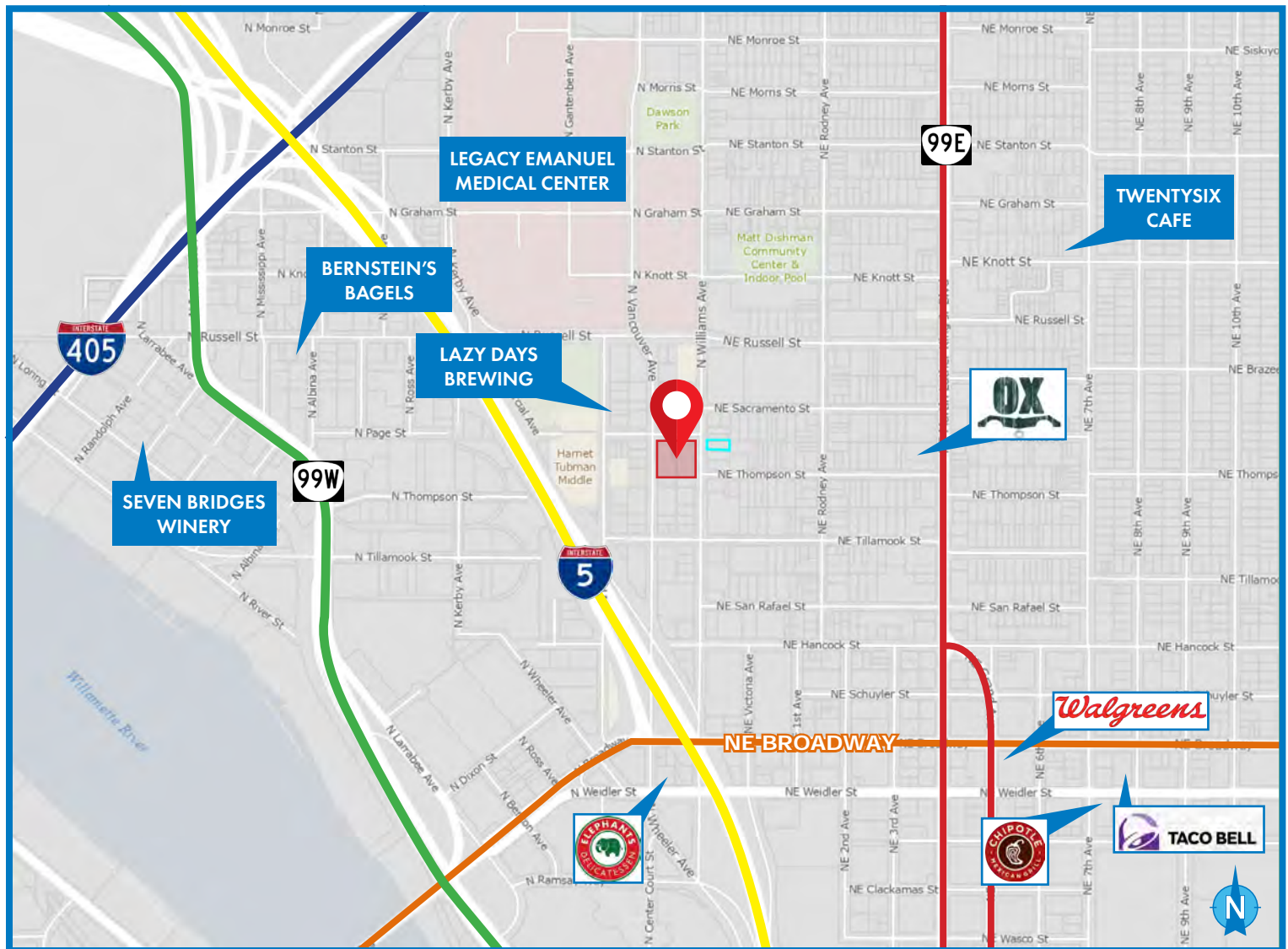
900 SW 5th Avenue • 17th Floor • Portland, OR 97204  
503.223.3171 • norris-stevens.com

# 2225 N WILLIAMS AVE / 108 N PAGE ST

Portland, OR 97227

FOR LEASE

## MAP



WALK SCORE

93

BIKE SCORE

100

For more information or a property tour, please contact:

**GREG NESTING**

503.225.8440

GregN@norris-stevens.com

**LUIS MARTIN DEL CAMPO**

503.416.8422

LuisM@norris-stevens.com

**Norris & Stevens**

INVESTMENT REAL ESTATE SERVICES



Information contained herein has been obtained from others and considered to be reliable; however, a prospective purchaser or lessee is expected to verify all information to their own satisfaction.

900 SW 5th Avenue • 17th Floor • Portland, OR 97204

503.223.3171 • [norris-stevens.com](http://norris-stevens.com)



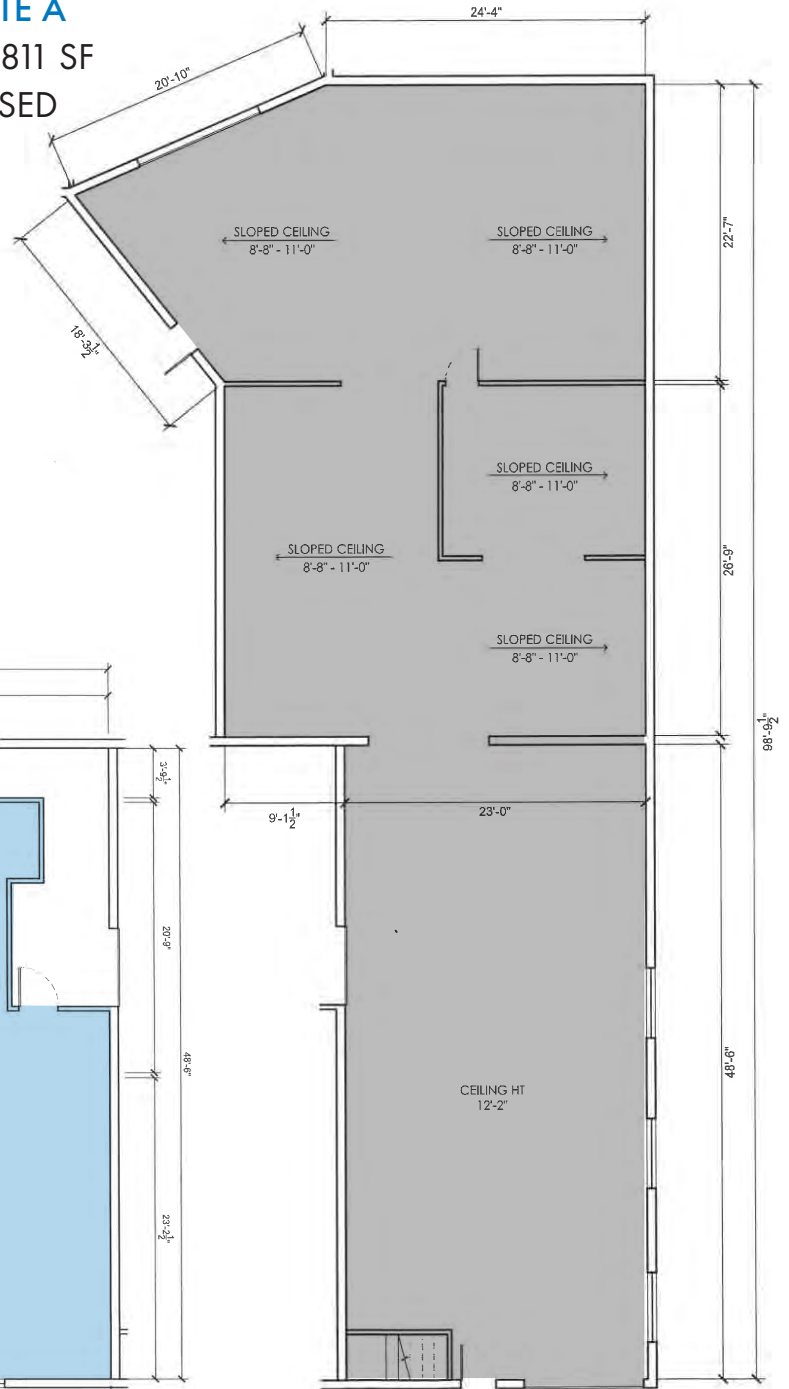
Portland, OR 97227

FOR LEASE

## FLOOR PLANS

## SUITE A

± 2,811 SF  
LEASED

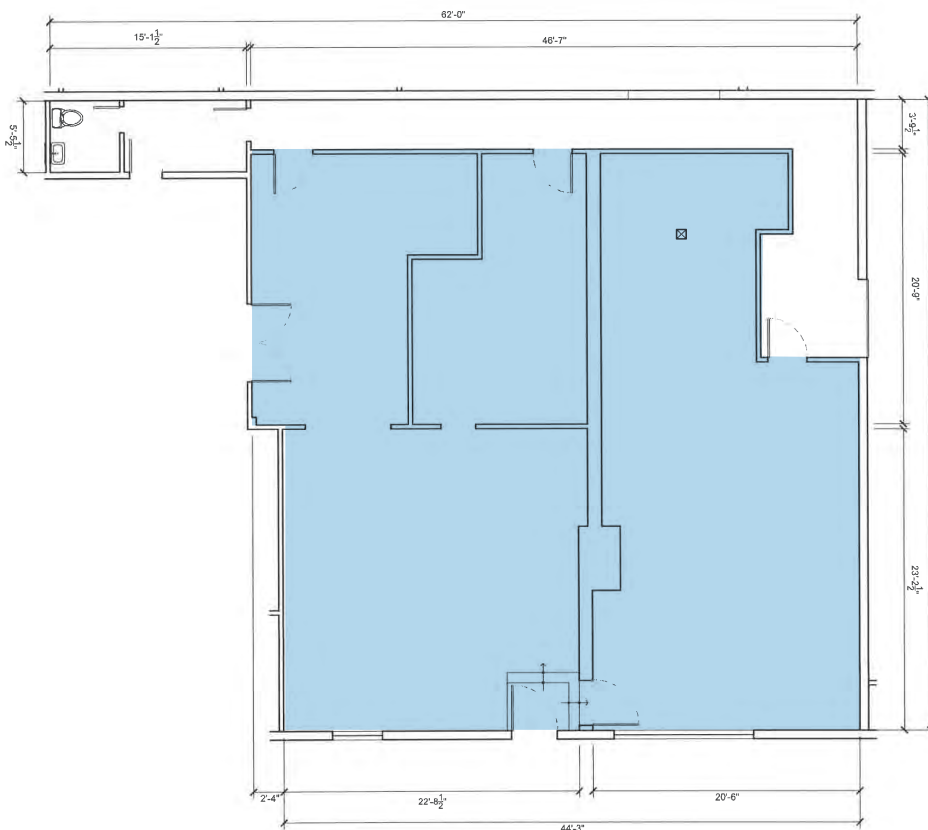


N. PAGE STREET

## SUITE B

± 2,287 SF

AVAILABLE



For more information or a property tour, please contact:

**GREG NESTING**

503.225.8440

GregN@norris-stevens.com

**LUIS MARTIN DEL CAMPO**

503.416.8422

LuisM@norris-stevens.com



Information contained herein has been obtained from others and considered to be reliable; however, a prospective purchaser or lessee is expected to verify all information to their own satisfaction.

# Norris & Stevens

INVESTMENT REAL ESTATE SERVICES

900 SW 5th Avenue • 17th Floor • Portland, OR 97204

503.223.3171 • [norris-stevens.com](http://norris-stevens.com)

# 2225 N WILLIAMS AVE / 108 N PAGE ST

Portland, OR 97227

## FOR LEASE

PHOTOS – SUITE B



For more information or a property tour, please contact:

**GREG NESTING**

503.225.8440

GregN@norris-stevens.com

**LUIS MARTIN DEL CAMPO**

503.416.8422

LuisM@norris-stevens.com



Information contained herein has been obtained from others and considered to be reliable; however, a prospective purchaser or lessee is expected to verify all information to their own satisfaction.

## Norris & Stevens

INVESTMENT REAL ESTATE SERVICES

900 SW 5th Avenue • 17th Floor • Portland, OR 97204

503.223.3171 • [norris-stevens.com](http://norris-stevens.com)