

500 LEGACY PLAZA WEST, LAPORTE, IN 46350



For more information, please contact:

ANTONY MIOCIC
Director of Office Group
219.864.0200
amiocic@latitudeco.com

CHANDLER KIMMEL
219.864.0200
ckimmel@latitudeco.com



LATITUDE
COMMERCIAL
REAL ESTATE SERVICES

LATITUDECO.COM

LEASING LAPORTE MEDICAL SPACE

500 Legacy Plaza West, LaPorte, IN 46350



EXECUTIVE SUMMARY



OFFERING SUMMARY

Available SF: 2,000 SF

Lease Rate: Negotiable

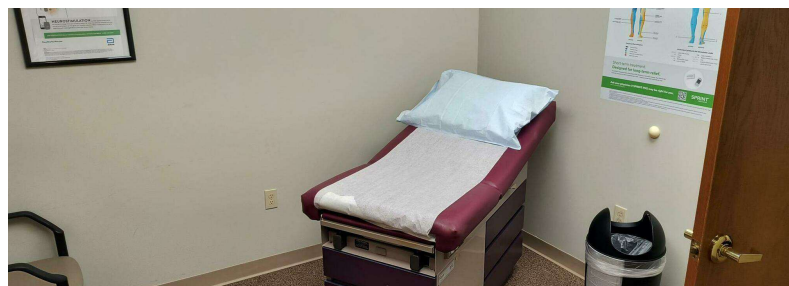
Lot Size: 0.21 Acres

Building Size: 2000 SF

Zoning: Office Park

PROPERTY HIGHLIGHTS

- 2,000 square feet of medical time share space available for lease
- Space consists of two exam rooms, one procedure room, waiting area, kitchenette
- Available Wednesdays and Thursdays
- Office condo located in the Sagamore Business Center off of Monroe Street
- Aggressive and flexible pricing



ANTONY MIOCIC
Director of Office Group
219.864.0200
amiocic@latitudeco.com

CHANDLER KIMMEL
219.864.0200
ckimmel@latitudeco.com

LEASING LAPORTE MEDICAL SPACE

500 Legacy Plaza West, LaPorte, IN 46350



PROPERTY DESCRIPTION

PROPERTY DESCRIPTION

Premier medical time share space available within the Sagamore Business Center. Boasting 2,000 square feet, this well-appointed office condo features two exam rooms, a procedure room, a spacious waiting area, and a convenient kitchenette. Available on Wednesdays and Thursdays, this flexible lease option offers the ideal solution for medical practitioners seeking a professional and accommodating workspace for up to two days a week. The prime location off Monroe Street provides convenient access for both staff and patients, while the aggressive and flexible pricing makes this an attractive and competitive choice. Elevate your practice in this modern, adaptable, and well-equipped medical space.

LOCATION DESCRIPTION

This property is located within the Sagamore Business Center in LaPorte, Indiana.



ANTONY MIOCIC
Director of Office Group
219.864.0200
amiocic@latitudeco.com

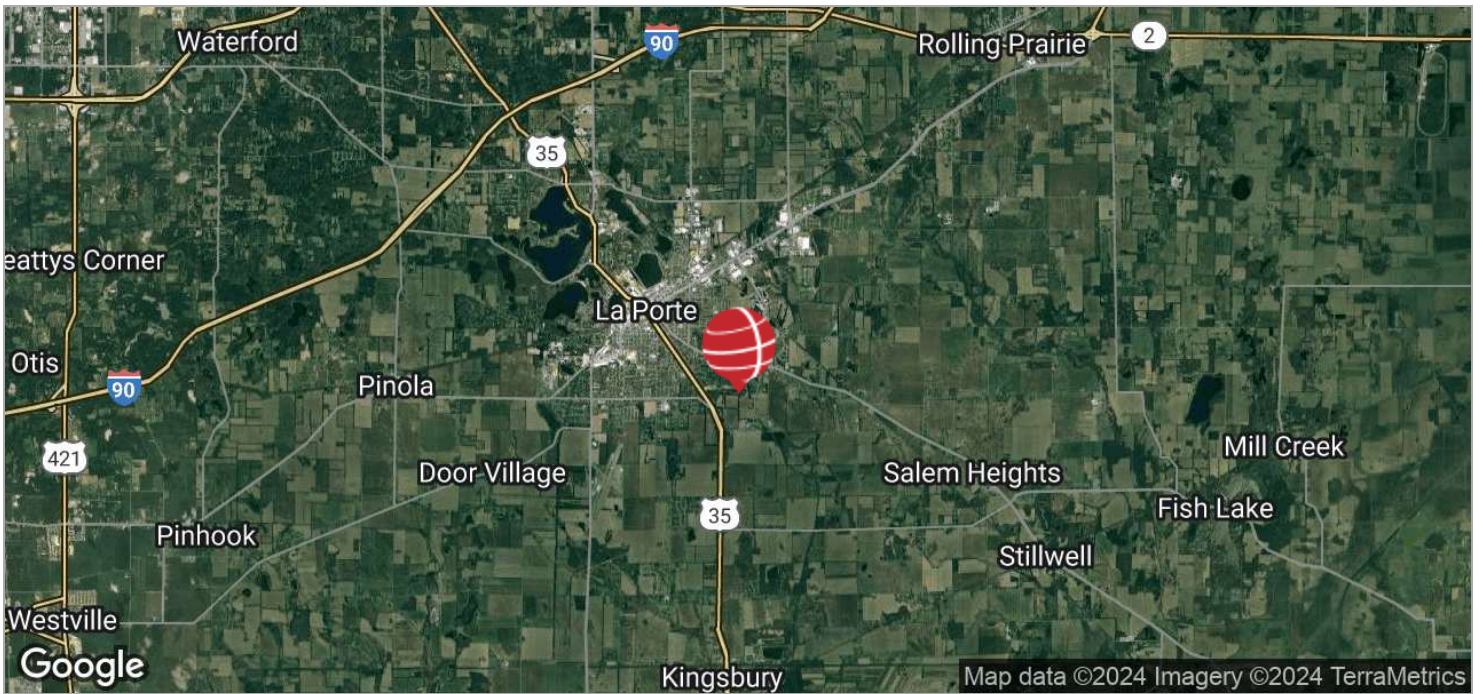
CHANDLER KIMMEL
219.864.0200
ckimmel@latitudeco.com

LEASING LAPORTE MEDICAL SPACE

500 Legacy Plaza West, LaPorte, IN 46350



LOCATION MAPS



ANTONY MIOCIC
Director of Office Group
219.864.0200
amiocic@latitudeco.com

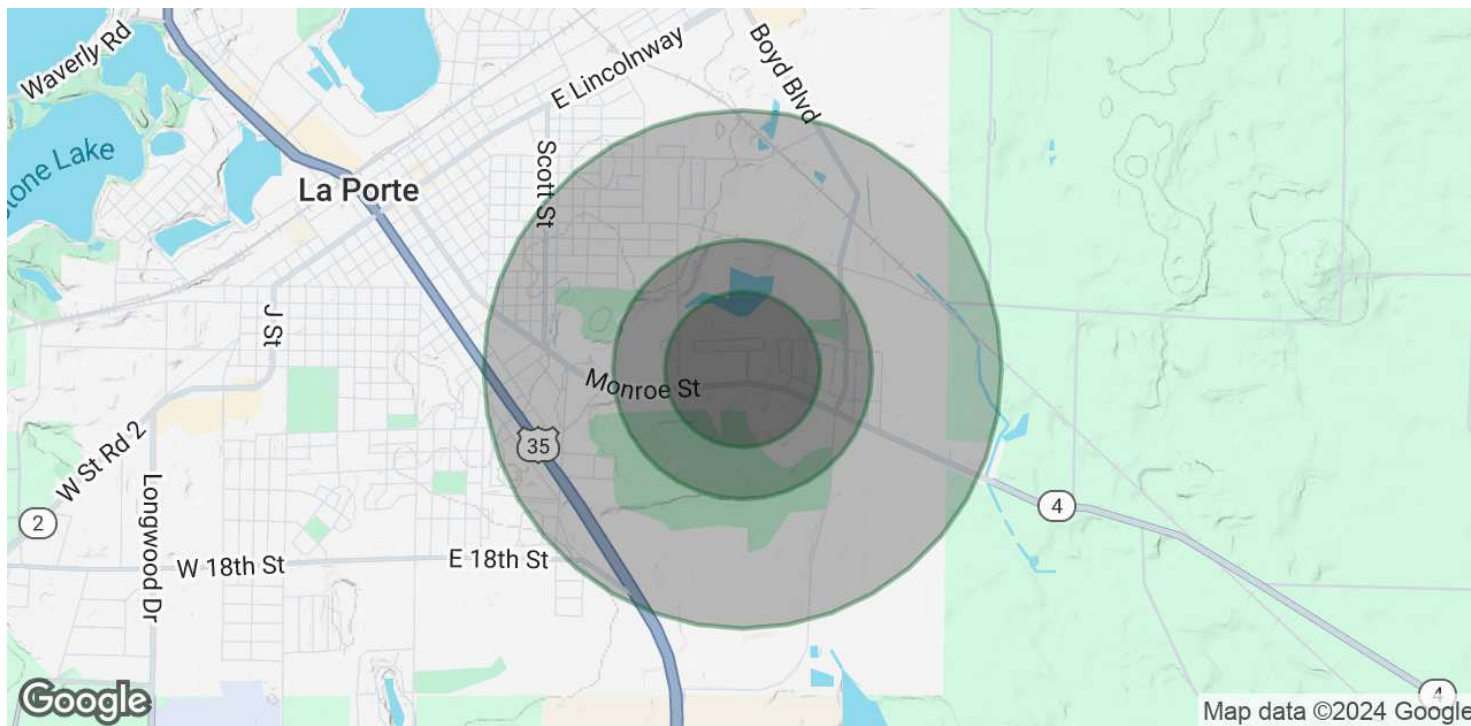
CHANDLER KIMMEL
219.864.0200
ckimmel@latitudeco.com

LEASING LAPORTE MEDICAL SPACE

500 Legacy Plaza West, LaPorte, IN 46350



DEMOGRAPHICS MAP & REPORT



POPULATION

| | 0.3 MILES | 0.5 MILES | 1 MILE |
|----------------------|-----------|-----------|--------|
| Total Population | 418 | 1,338 | 4,902 |
| Average Age | 43 | 43 | 40 |
| Average Age (Male) | 41 | 41 | 39 |
| Average Age (Female) | 45 | 45 | 42 |

HOUSEHOLDS & INCOME

| | 0.3 MILES | 0.5 MILES | 1 MILE |
|---------------------|-----------|-----------|-----------|
| Total Households | 180 | 576 | 2,000 |
| # of Persons per HH | 2.3 | 2.3 | 2.5 |
| Average HH Income | \$79,664 | \$81,146 | \$80,161 |
| Average House Value | \$186,126 | \$190,578 | \$193,464 |

Demographics data derived from AlphaMap

ANTONY MIOCIC

Director of Office Group
219.864.0200
amiocic@latitudeco.com

CHANDLER KIMMEL

219.864.0200
ckimmel@latitudeco.com