



**3431 WESLEY STREET
CULVER CITY, CA 90230**

PREMISES Unit D ± 1,325 SF

RENT \$3.50/SF, NNN (Nets Approx. \$0.48/SF)

OCCUPANCY Immediate

TERM 1 - 3 Years

PARKING 3 Spaces (\$150/Space/month)

FEATURES

- High Ceilings
- Open Environment
- Natural Light
- Concrete Floor
- Mezzanine Lounge
- Operative Windows
- Wesley Street Frontage



A DIVISION OF

**LEE &
ASSOCIATES**

1508 17th Street, Santa Monica, CA 90404

310.899.2700 | www.leewestla.com | DRE 01222000

No warranty or representation is made to the accuracy of the foregoing information.
Terms of sale or lease are subject to change or withdrawal without notice.



**3431 WESLEY STREET
CULVER CITY, CA 90230**

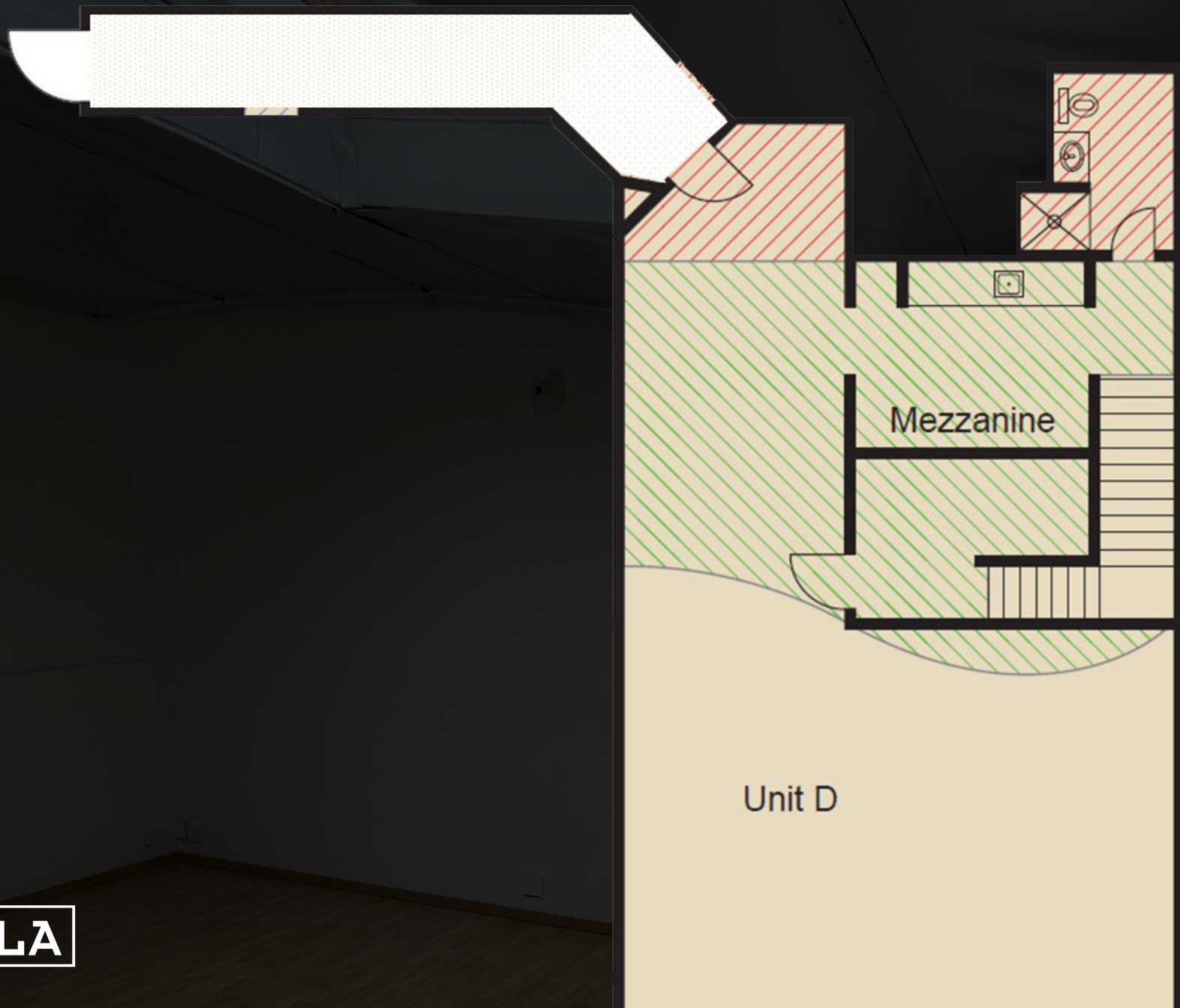
UNIT D





FLOOR PLAN

Unit D



SITE PLAN



A DIVISION OF
LEE & ASSOCIATES



A DIVISION OF
LEE & ASSOCIATES



Gage Danley
310.899.2749
GDanley@LeeWestLA.com
ACT DRE 02075191



Alex Rivera
310.899.2742
ARivera@LeeWestLA.com
BKR DRE 010328712



A DIVISION OF
**LEE &
ASSOCIATES**