



12 Gill St

12 Gill St, Woburn, MA 01801



Wronka, Ltd.

Commercial Real Estate Advisors



Marianne Wronka

Wronka, Ltd. Commercial Real Estate Advisors
400 Trade Center Dr, Suite 5900, Woburn, MA 01801
mwronka@wronkaltd.com
(781) 229-2233



12 Gill St

\$19.95 /SF/Yr

First-class office building with ample free parking, dramatic entrance lobby; Close to restaurants, retail stores, banks, daycare facilities, fitness facilities, medical offices, dry cleaningservices, and hotels. Convenient access to I-93 and I-95 and less than one mile from Mishawum Commuter Rail Station and One mile from Anderson Regional Transportation Center....



| | |
|-------------------------|--------------------|
| Rental Rate: | \$19.95 /SF/Yr |
| Property Type: | Office |
| Property Subtype: | Medical |
| Building Class: | B |
| Rentable Building Area: | 182,603 SF |
| Year Built: | 2000 |
| Cross Streets: | New Boston St |
| Walk Score ®: | 41 (Car-Dependent) |
| Transit Score ®: | 29 (Some Transit) |
| Rental Rate Mo: | \$1.66 USD/SF/Mo |

1st Floor Ste 1600

| | |
|-----------------|--------------------|
| Space Available | 3,154 SF |
| Rental Rate | \$19.95 /SF/Yr |
| Date Available | December 27, 2021 |
| Service Type | Plus All Utilities |
| Built Out As | Standard Office |
| Space Type | Sublet |
| Space Use | Office |

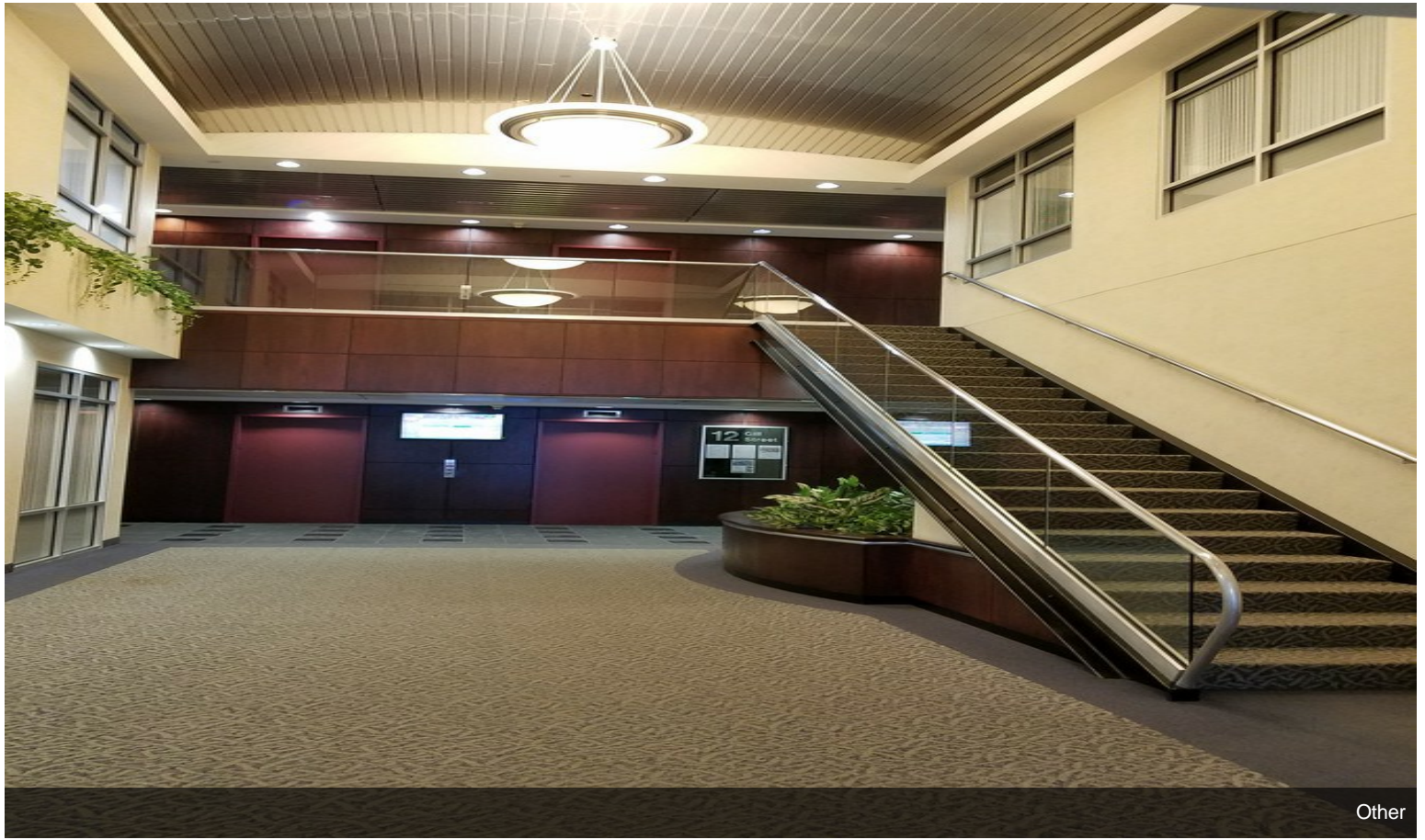
Short term affordable sublease for 1st Class Office suite; Two entries off impressive Lobby ; Suitable for executive, professional, sales office, showroom; Direct entry to open area with beautiful flooring; 1 large private office/conference room and 1 large conference/training room with full exterior window line; 3 private offices with full window line to building lobby. Open area to collaborate or for work stations; Kitchen/break room; Two single in suite restrooms.



12 Gill St, Woburn, MA 01801

First-class office building with ample free parking, dramatic entrance lobby; Close to restaurants, retail stores, banks, daycare facilities, fitness facilities, medical offices, dry cleaning services, and hotels. Convenient access to I-93 and I-95 and less than one mile from Mishawum Commuter Rail Station and One mile from Anderson Regional Transportation Center.

Property Photos



Other

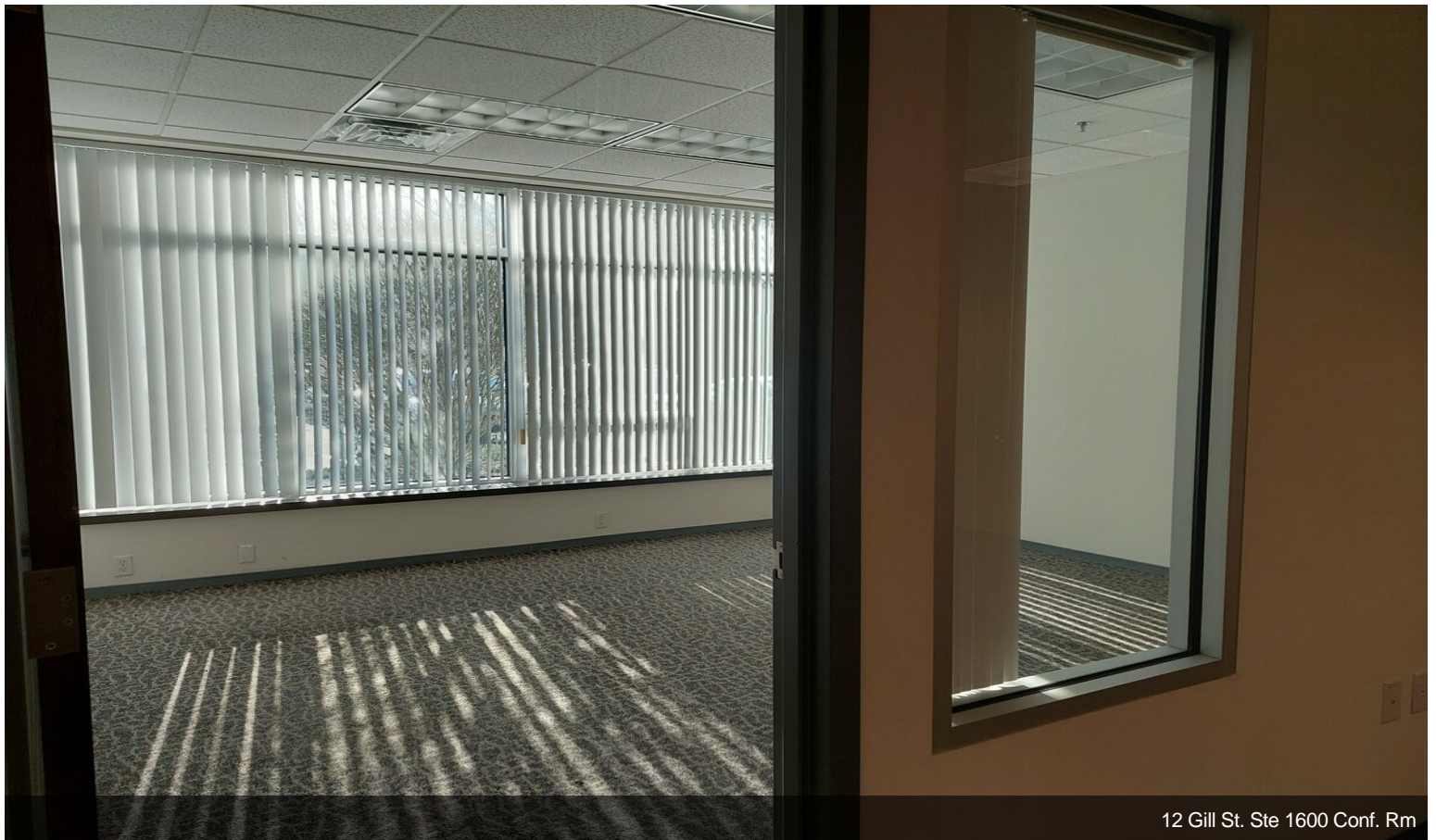


12 Gill St. Ste 1600 Showroom Reception

Property Photos



12 Gill St. Ste 1600 Open Area

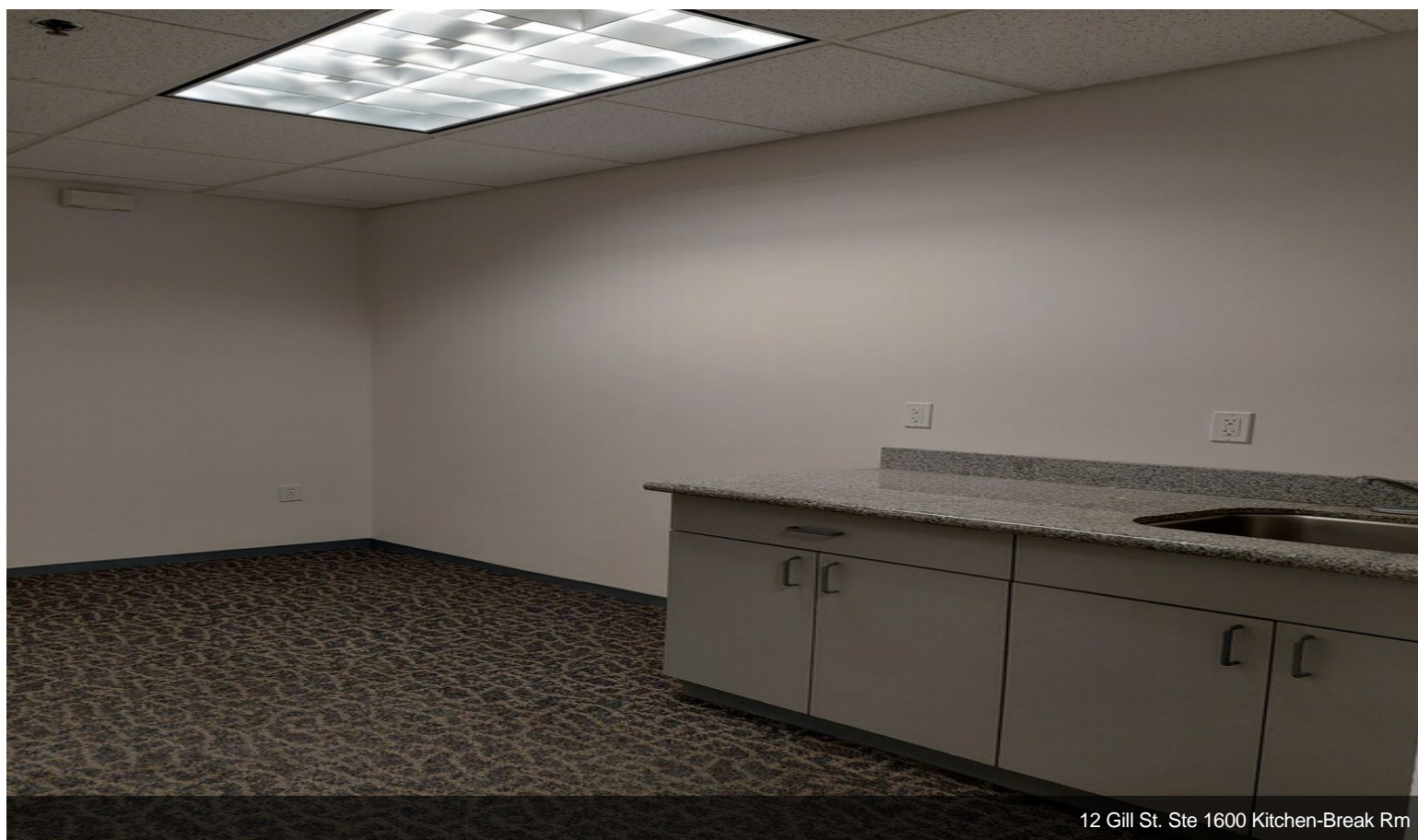


12 Gill St. Ste 1600 Conf. Rm

Property Photos



12 Gill St. Ste 1600 Conf.-Training Rm

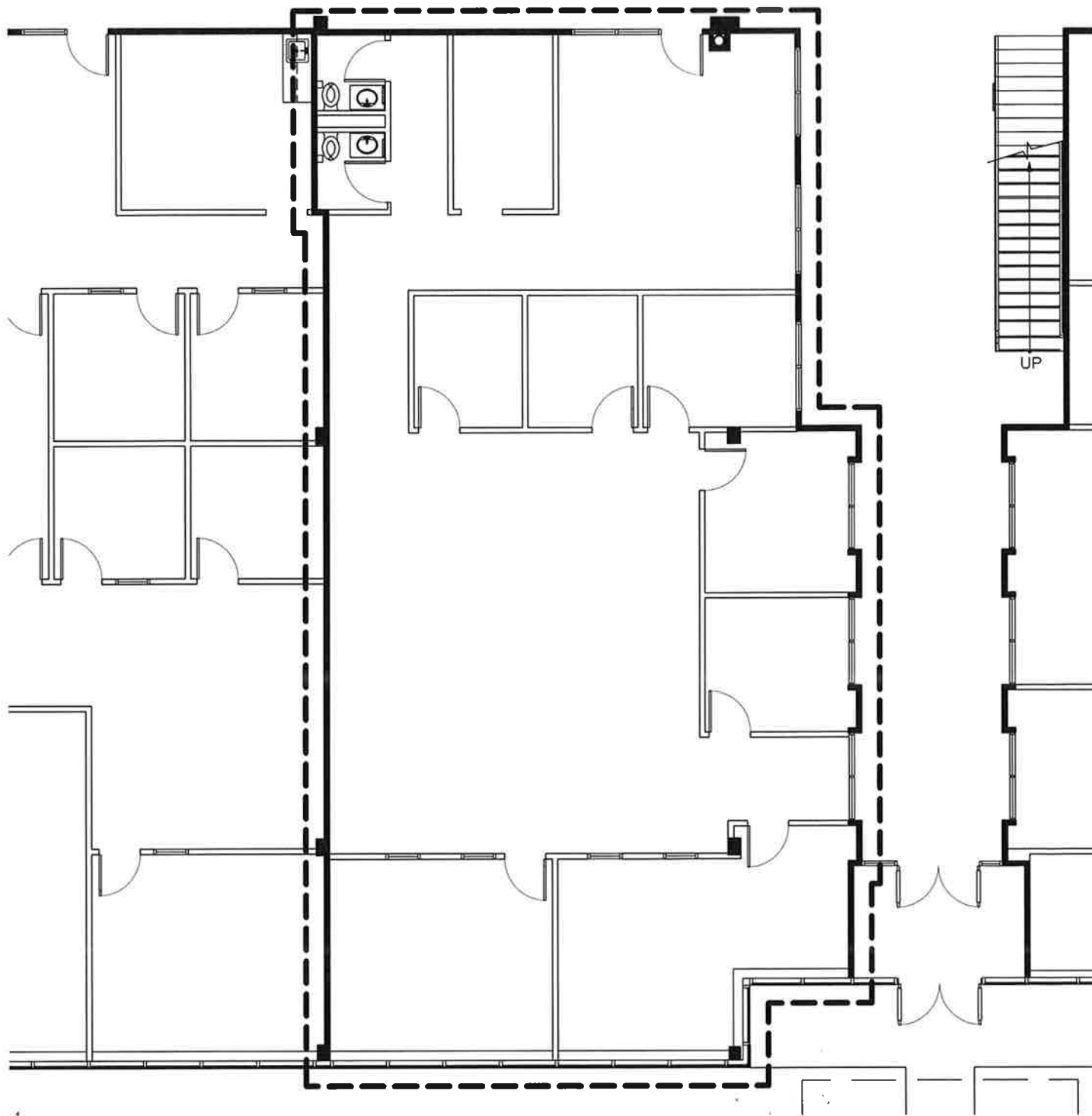


12 Gill St. Ste 1600 Kitchen-Break Rm

Property Photos



Other



Note: These CAD drawings are recorded on, or can be transmitted as, electronic media. They are therefore subject to undetectable alteration or erasure, either intentional or unintentional, due to, among other causes: transmission, conversion, media degradation, software error, or human alteration. Accordingly, Cummings Properties shall not be held liable for any claims, losses, damages, or costs arising out of any such use of these CAD documents.



12 Gill Street, Suite 1600, Woburn, MA

- All dimensions are approximate.
- CPL standard construction unless otherwise noted.
- All finishes to remain as is unless otherwise noted.
- Furnishings are shown for illustrative purposes only.
- No representation is made as to the suitability of this design for lessee's use or occupancy.

Cummings Properties
200 West Cummings Park, Woburn, MA. 781-935-8000

| | | |
|---------------|-------------------------|----------------------|
| LSF: 3,154 | Scale: 3/32" = 1'-0" | Date: 07-07-05 |
| Drawn: EW | Checked: KF | Revised: 05-24-12 |