

The Concourse  
Outstanding Distribution Space  
Central City of Industry  
Location  
Immediate Access to the (60)  
Freeway



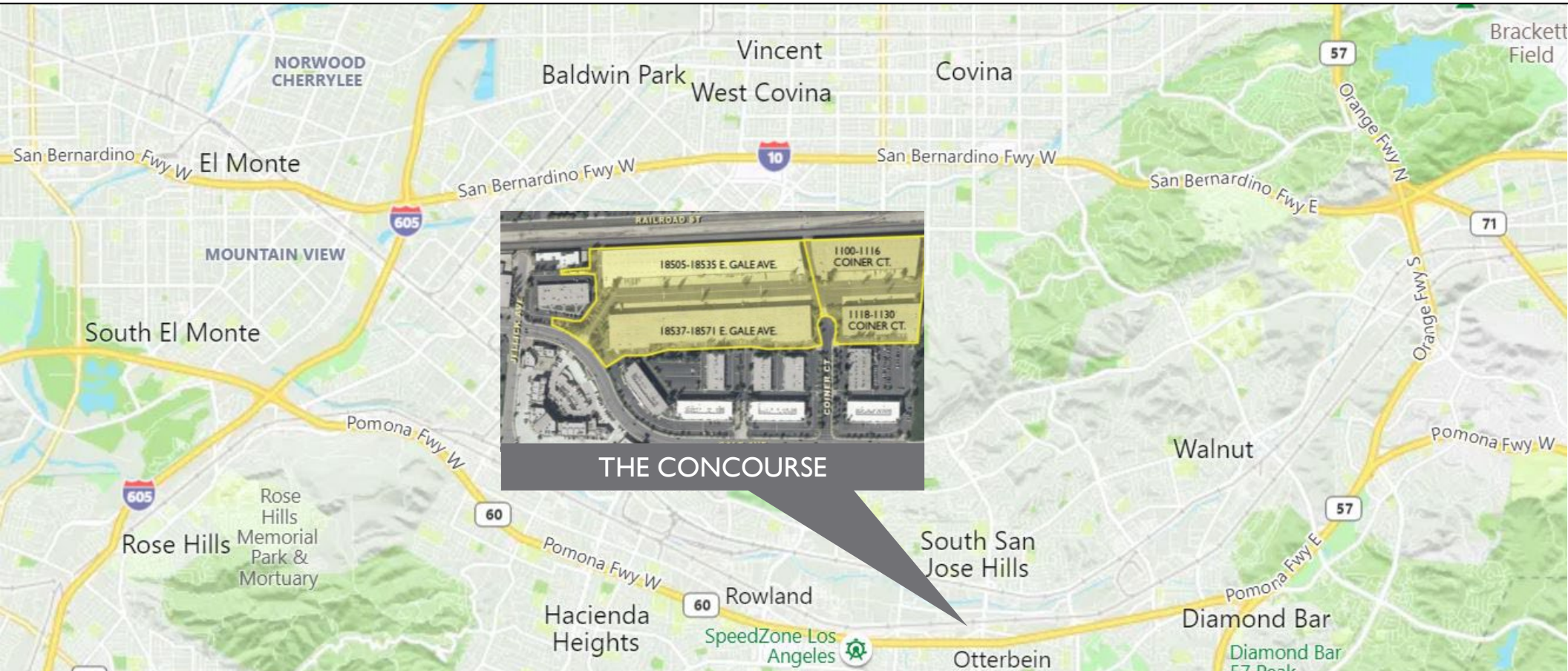
CITY OF INDUSTRY'S PREMIER CLASS-A BUSINESS PARK

THE CONCOURSE  
City of Industry, CA



# PROPERTY FEATURES

# THE CONCOURSE



## PROPERTY HIGHLIGHTS

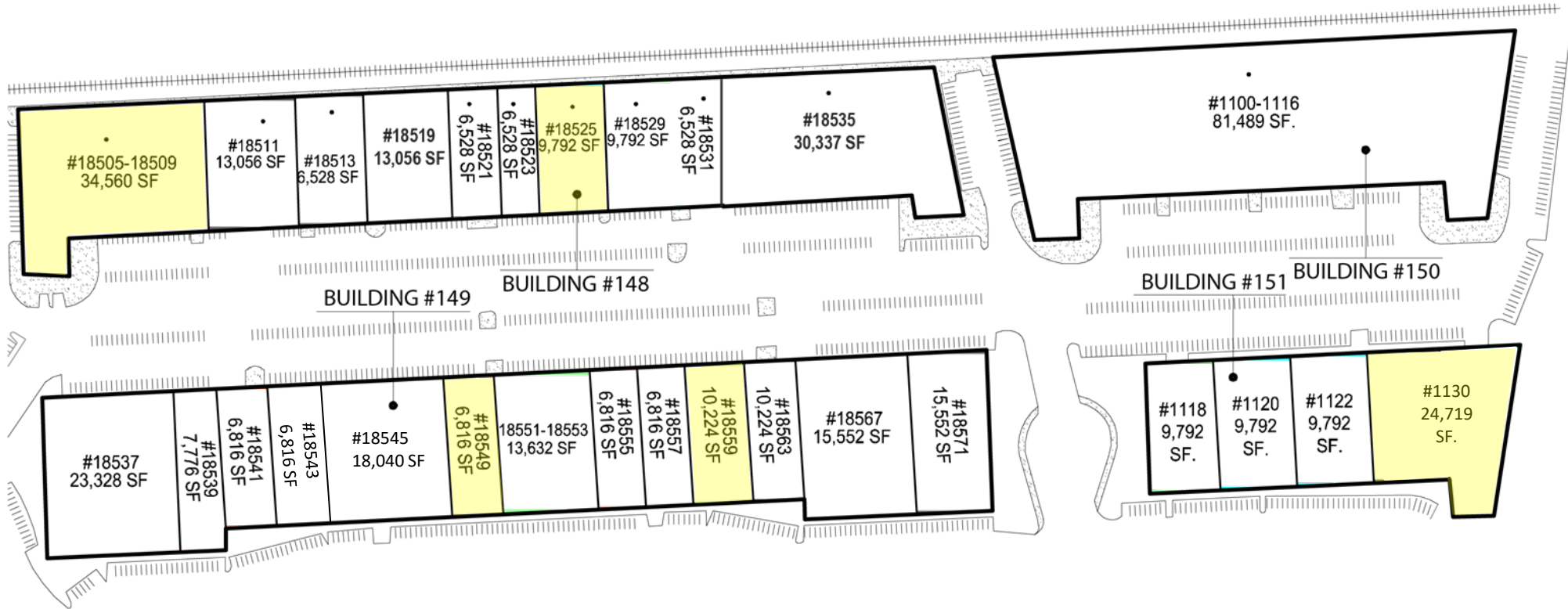
- A 420,697SF Class A Multitenant Park
- Rent Includes Base Year CAM
- Immediate (60) Freeway Access via Fullerton Road & Nogales Street
- Close Proximity to Retail Amenities
- 24' Minimum Clear Height
- Abundant Dock High Loading
- Large Truck Court (over 160 feet)

## AVAILABLE UNITS

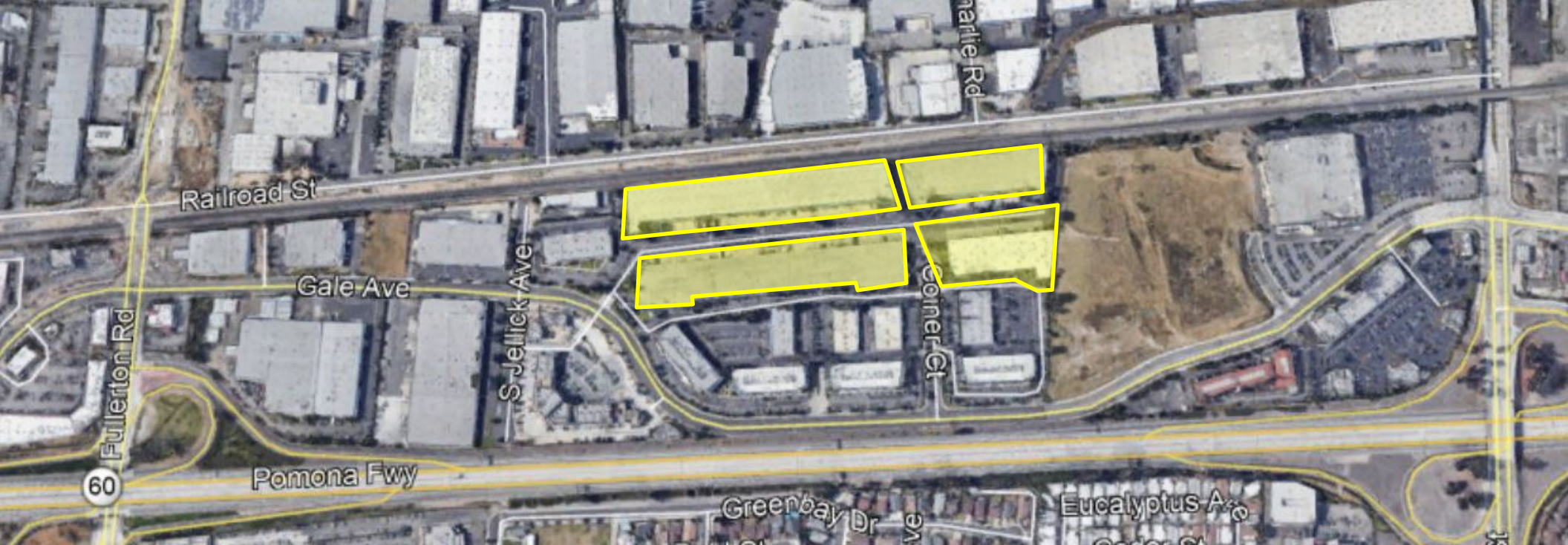
UNIT	SIZE	OFFICE	LOADING	AVAILABLE	PRICE
18505 E Gale Ave	34,560 SF	TBD	7 DH, 1 GL	01/01/2025	TBD
1130 Coiner Ct	24,719 SF	5,109 SF	4 DH, 2 GL	NOW	TBD
18559 E Gale Ave	10,224 SF	2,252 SF	1 DH, 1 GL	NOW	TBD
18525 E Gale Ave	9,792 SF	1,427 SF	1 DH, 1 GL	NOW	TBD
18549 E Gale Ave	6,816 SF	3,522 SF	2DH	NOW	TBD

# PROJECT SITE PLAN

THE  
CONCOURSE



 AVAILABLE



## LEASING CONTACTS

### **Chris Tolles**

Executive Managing Director | Brokerage  
+1 213 955 5129  
[christopher.tolles@cushwake.com](mailto:christopher.tolles@cushwake.com)  
License: 01459899

### **Maya Schirn**

Associate | Brokerage  
+1 213 236 4931  
[maya.schirn@cushwake.com](mailto:maya.schirn@cushwake.com)  
License: 02237054

### **Erik Larson**

Executive Managing Director | Brokerage  
+1 213 955 5126  
[erik.larson@cushwake.com](mailto:erik.larson@cushwake.com)  
License: 01213790



900 Wilshire Boulevard,  
Suite, 2400  
Los Angeles, CA 90017  
+1 213 955 5100  
License: 0061635 [Covid-19 Prevention Plan](#)

Cushman & Wakefield Copyright 2018. No warranty or representation, express or implied, is made to the accuracy or completeness of the information contained herein, and same is submitted subject to errors, omissions, change of price, rental or other conditions, withdrawal without notice, and to any special listing conditions imposed by the property owner(s). As applicable, we make no representation as to the condition of the property (or properties) in question.