

FOR LEASE

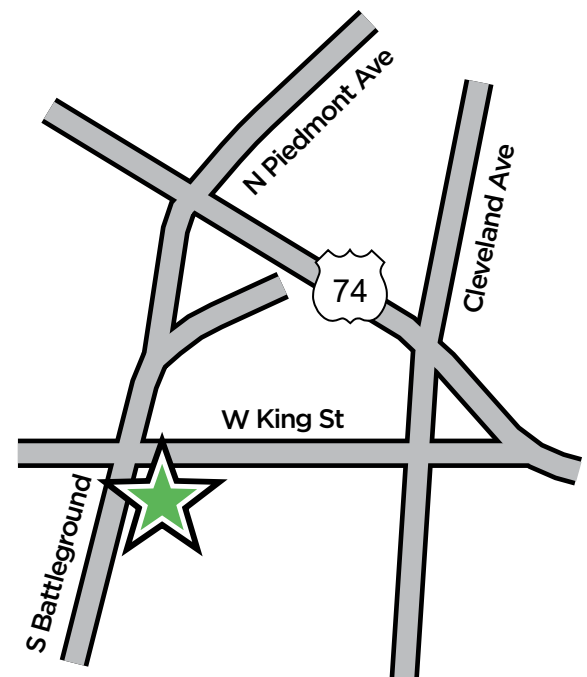


111 W. KING STREET

Kings Mountain, NC

4,323 SF of Downtown Retail or Office Space

- 24 spaces on site parking spaces
- Zoning: Commercial Business
- Located near the heart of the Downtown Kings Mountain business district in close proximity to restaurants, retail, and local services. Easy access to I-85, connecting to Gastonia and the greater Charlotte market
- Traffic Count: Approximately 13,000 VPD along W King St (US-74 Business)
- Located at signalized intersection with excellent exposure and access
- Open layout with flexible space for variety of uses
- Ideal for retail, boutique, professional office, restaurant, or service-oriented business
- Rate: \$16.00/SF NNN



Spencer Borders

980.404.1111

spencer.borders@foothillscommercial.com

Sharon Wilson

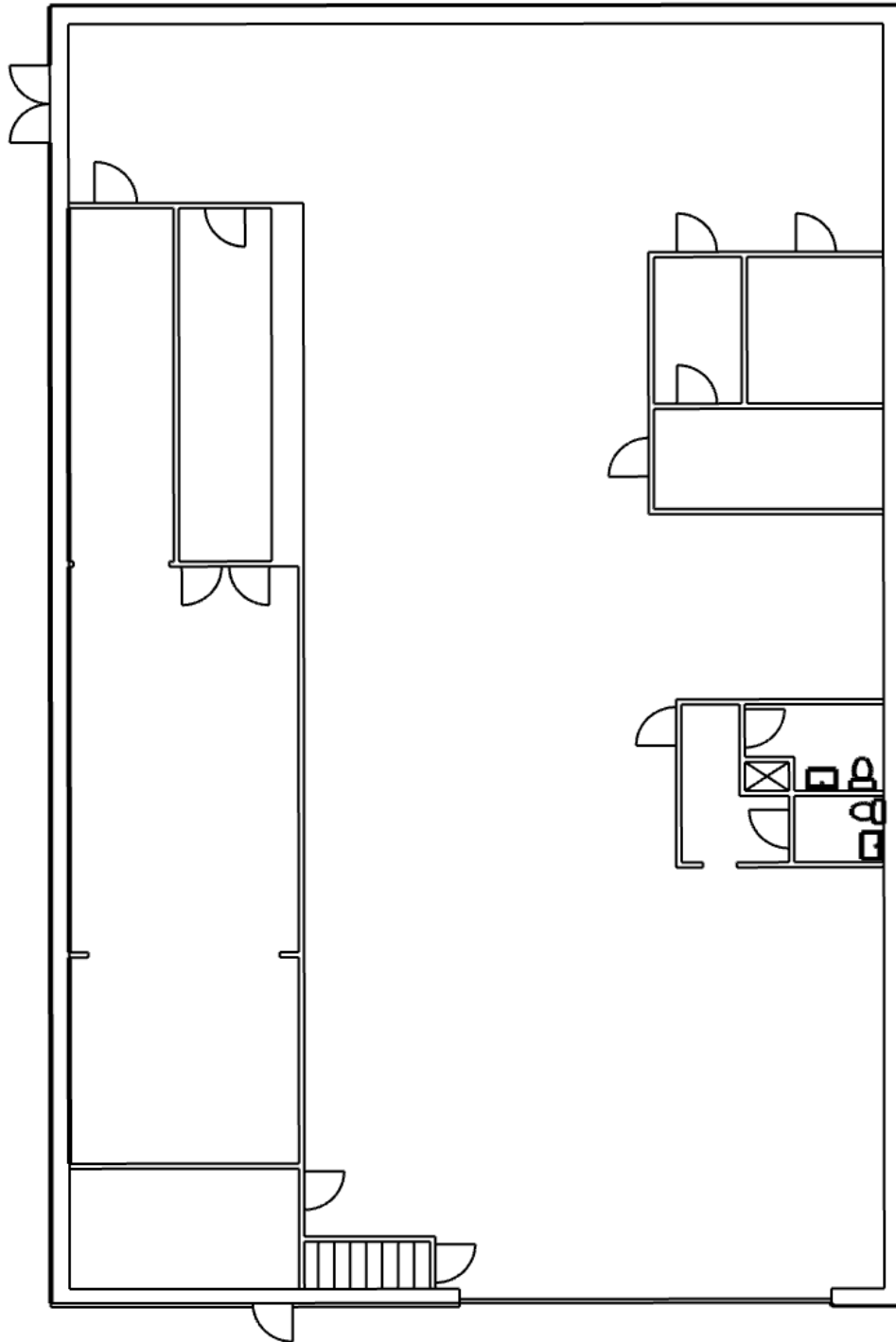
704.472.5667

sharon.wilson@foothillscommercial.com

111 W. KING STREET

Kings Mountain, NC

FOR LEASE



Spencer Borders

980.404.1111

spencer.borders@foothillscommercial.com

Sharon Wilson

704.472.5667

sharon.wilson@foothillscommercial.com

111 W. KING STREET

FOR LEASE

Kings Mountain, NC



Spencer Borders

980.404.1111

spencer.borders@foothillscommercial.com

Sharon Wilson

704.472.5667

sharon.wilson@foothillscommercial.com

111 W. KING STREET

Kings Mountain, NC

FOR LEASE



Spencer Borders

980.404.1111

spencer.borders@foothillscommercial.com

Sharon Wilson

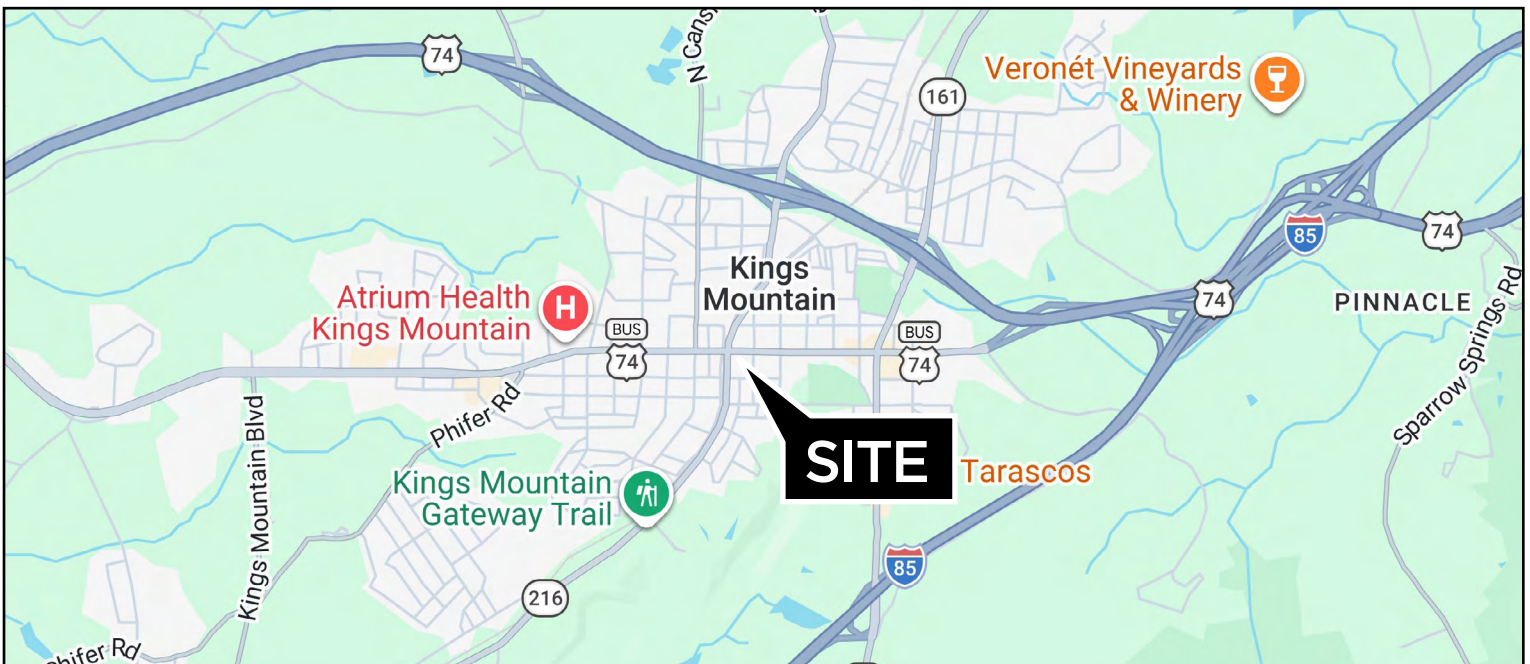
704.472.5667

sharon.wilson@foothillscommercial.com

111 W. KING STREET

FOR LEASE

Kings Mountain, NC



Spencer Borders

980.404.1111

spencer.borders@foothillscommercial.com

Sharon Wilson

704.472.5667

sharon.wilson@foothillscommercial.com