

GRIFFITH BUSINESS PARK

4800 SW Griffith Drive | Beaverton, OR 97005

FOR LEASE



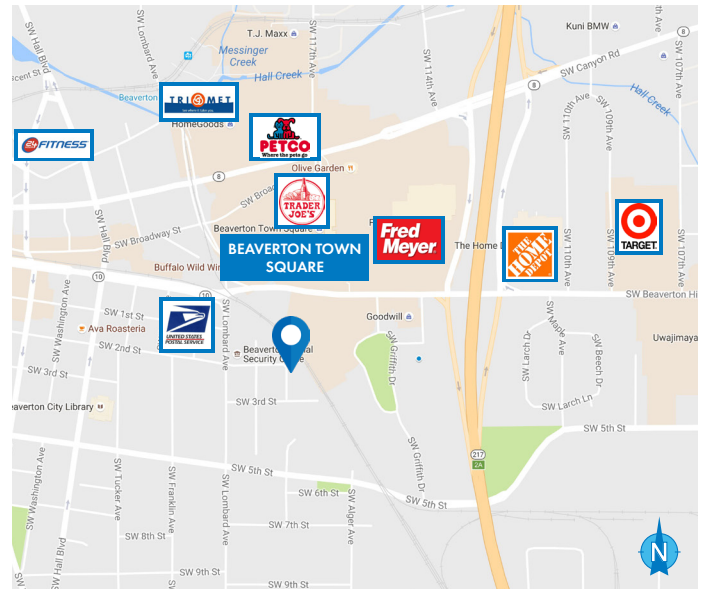
OFFICE SPACE AVAILABLE FOR LEASE

DETAILS

- Suite 250: ± 2,604 SF - Move-in ready \$21.50 PSF, FS
- Suite 350: ± 2,688 SF \$21.50 PSF, FS

FEATURES

- Updated common areas, HVAC, new lighting - updated restrooms
- Freshly sealed parking lot
- Conference room, break room
- Elevator served
- Ample on-site parking - with new landscaping
- Along TriMet bus lines and easy access to TriMet MAX line, Hwy 10, and Hwy 217
- Just south of Beaverton Town Square
- Quiet business park with local ownership



11.12.2024

For more information or a property tour, please contact:

DUANE LINK

503.225.8465

Duanel@norris-stevens.com



Information contained herein has been obtained from others and considered to be reliable; however, a prospective purchaser or lessee is expected to verify all information to their own satisfaction.

Norris & Stevens

INVESTMENT REAL ESTATE SERVICES

900 SW 5th Avenue • 17th Floor • Portland, OR 97204

503.223.3171 • norris-stevens.com

GRIFFITH BUSINESS PARK

4800 SW Griffith Drive | Beaverton, OR 97005

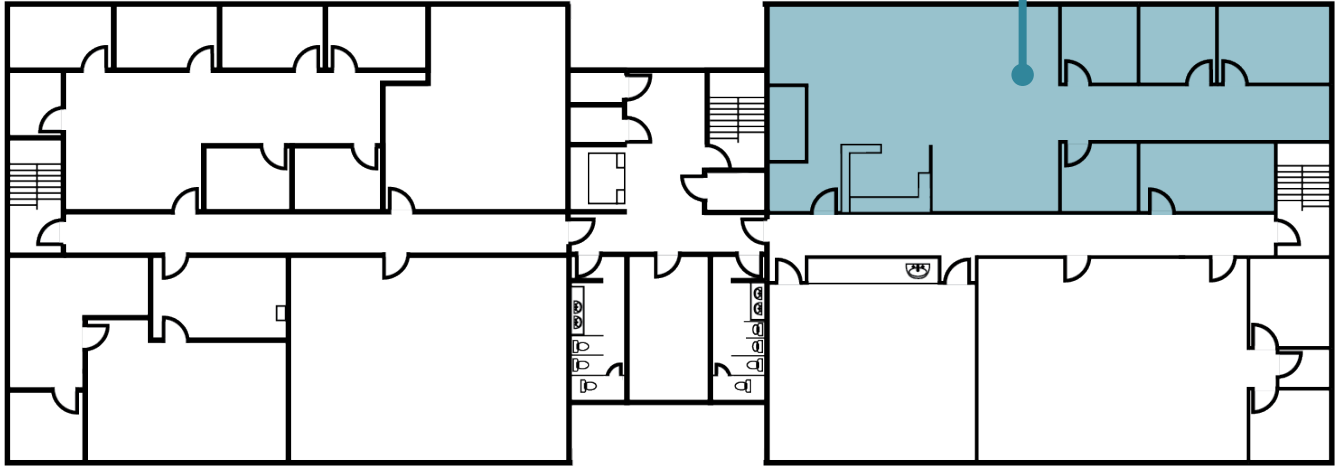
FOR LEASE

FLOOR PLANS

SECOND FLOOR

HIGHWAY 217

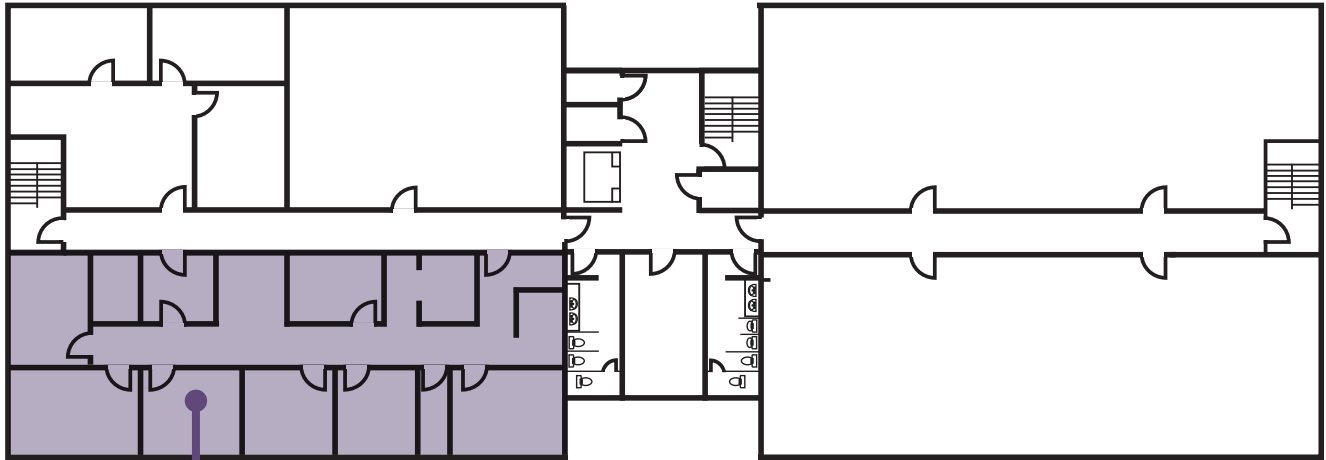
SUITE 250
± 2,604 SF
Move-In Ready



SW GRIFFITH DRIVE

THIRD FLOOR

HIGHWAY 217



SUITE 350
± 2,688 SF

SW GRIFFITH DRIVE

For more information or a property tour, please contact:

DUANE LINK

503.225.8465

Duanel@norris-stevens.com



Information contained herein has been obtained from others and considered to be reliable; however, a prospective purchaser or lessee is expected to verify all information to their own satisfaction.

Norris & Stevens

INVESTMENT REAL ESTATE SERVICES

900 SW 5th Avenue • 17th Floor • Portland, OR 97204

503.223.3171 • norris-stevens.com