

# 124-130

## MASON STREET

Greenwich, Connecticut

*Boutique Buildings  
Available for Lease  
in Greenwich*

[CLICK HERE FOR TOUR](#)

### NEWMARK





# IN THE HEART OF CENTRAL GREENWICH

- > Surrounded by retailers and restaurants that include Saks Fifth Avenue, Hoaglands, Something Natural, Doppio, Le Penguin, and Chase Bank, to name just a few
- > Garage parking at a ratio of 4.65/1,000 with elevator access to the office lobbies – approximately 10 spaces for each of the eight 2,150 RSF (+/-) office pods. The property is also surrounded by surface lot municipal parking
- > Charming New England style exterior architecture with a beautifully landscaped central plaza
- > The interior features fabulous ceiling heights throughout, with some suites having large open areas and others with more office-intensive existing build-outs
- > The building was originally constructed in 1988 and has been renovated on multiple occasions over the years
- > CGB-HO zoning permits office, medical office, and retail uses
- > Storage – Over 2,000 SF of finished attic area storage space available

## SPECIFICATIONS

Size: 17,276 SF (in two separate buildings, with each building divided into four pods of approximately 2,150 RSF each)

Available: Immediate

Rent: \$85 / SF + electric

## BROKER CONTACT

Allan Murphy  
203-912-1650 | [allan.murphy@nmrk.com](mailto:allan.murphy@nmrk.com)



# INTERIOR PHOTOS

124-130 MASON STREET, GREENWICH, CT



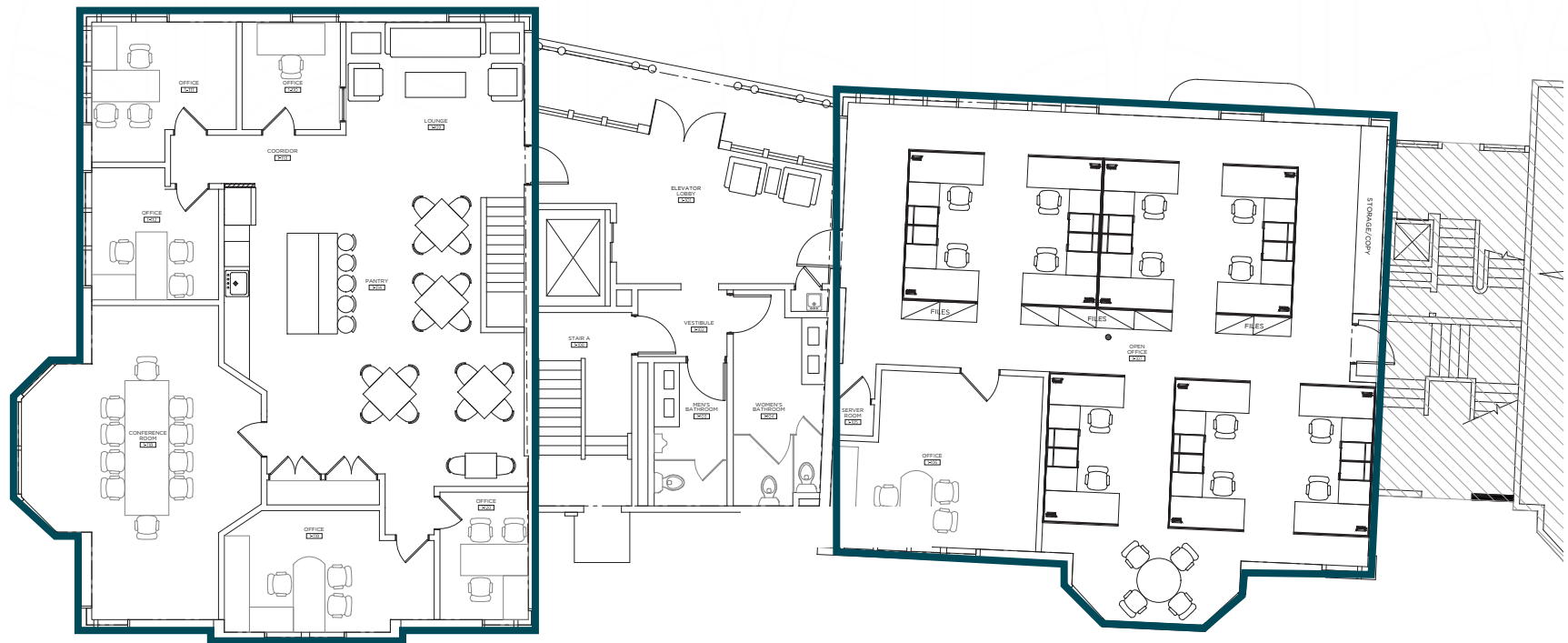
# GREENWICH AVENUE AERIAL



# FLOOR PLANS

124-130 MASON STREET, GREENWICH, CT

130 MASON STREET / 1ST FLOOR / 2,268 SF / 2,044 SF



# FLOOR PLANS

124-130 MASON STREET, GREENWICH, CT

130 MASON STREET / 2ND FLOOR / 2,249 SF / 2,087 SF

