

Land Available For Sale

3971 Northside Drive
Macon, GA 31210



Summary

Area Info

Aerial

Site Map



CONTACT

Wendy H Pierce, RPA
478-746-9421 Office
478-335-1254 Cell
wpierce@fickling.com

Jenny Howell
478-746-9421 Office
786-449-8523 Cell
jenny@fickling.com



577 Mulberry St, Suite 1100
Macon, GA 31201
478.746.9421 Office
<https://commercial.fickling.com>

PROPERTY INFORMATION

BUILDING

Property Address: 3971 Northside Drive
 Macon, GA 31210

County: Bibb

Total Size: 1 Acre

Topography: Wooded, at road grade

Width: 210'

Depth: 210'

Taxes (2023 est.): \$103.40

Utilities: All public utilities serve the site

Traffic Count: 19,200 VPD – Northside Drive

SITE

Site Size: 1 AC

Parcel ID: M044-0032

Zoning: A - Agricultural

SALE PRICE: \$50,000

Demographics 2023	3 Mile	5 Miles	7 Miles
Population	28,742	62,902	114,754
Avg HH Income	\$116,434	\$106,878	\$90,389
Median Age	32.0	36.8	37.2

CONTACT

Wendy H Pierce, RPA
 478-746-9421 Office
 478-335-1254 Cell
 wpierce@fickling.com

Jenny Howell
 478-746-9421 Office
 786-449-8523 Cell
 jenny@fickling.com



577 Mulberry St, Suite 1100
 Macon, GA 31201
 478.746.9421 Office
<https://commercial.fickling.com>

Property is 1 Acre and is currently zoned Agricultural. Site is accessible from Northside Drive via an easement on the west side of The Arbors apartment complex. Situated minutes from shopping centers, restaurants, McKibben Lane Elementary, Springdale Elementary, Howard Middle, and Howard High Schools. Site has easy access to Riverside Drive and I-75 via Tom Hill Senior Boulevard.



CONTACT

Wendy H Pierce, RPA
478-746-9421 Office
478-335-1254 Cell
wpierce@fickling.com

Jenny Howell
478-746-9421 Office
786-449-8523 Cell
jenny@fickling.com



577 Mulberry St, Suite 1100
Macon, GA 31201
478.746.9421 Office
<https://commercial.fickling.com>

AERIAL



CONTACT

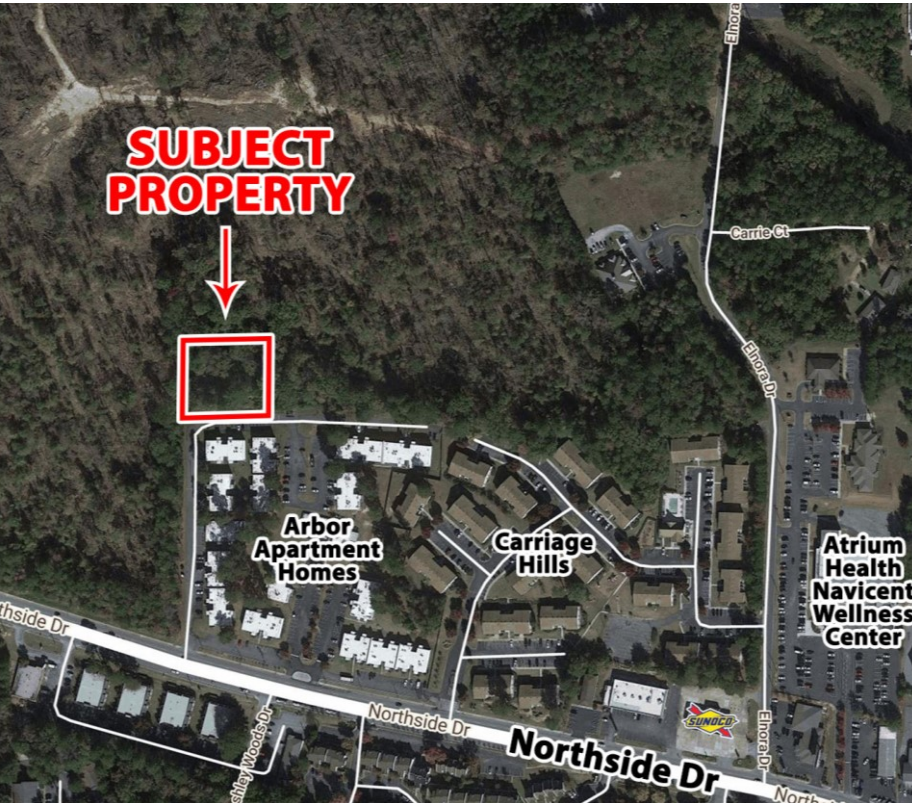
Wendy H Pierce, RPA
478-746-9421 Office
478-335-1254 Cell
wpierce@fickling.com

Jenny Howell
478-746-9421 Office
786-449-8523 Cell
jenny@fickling.com

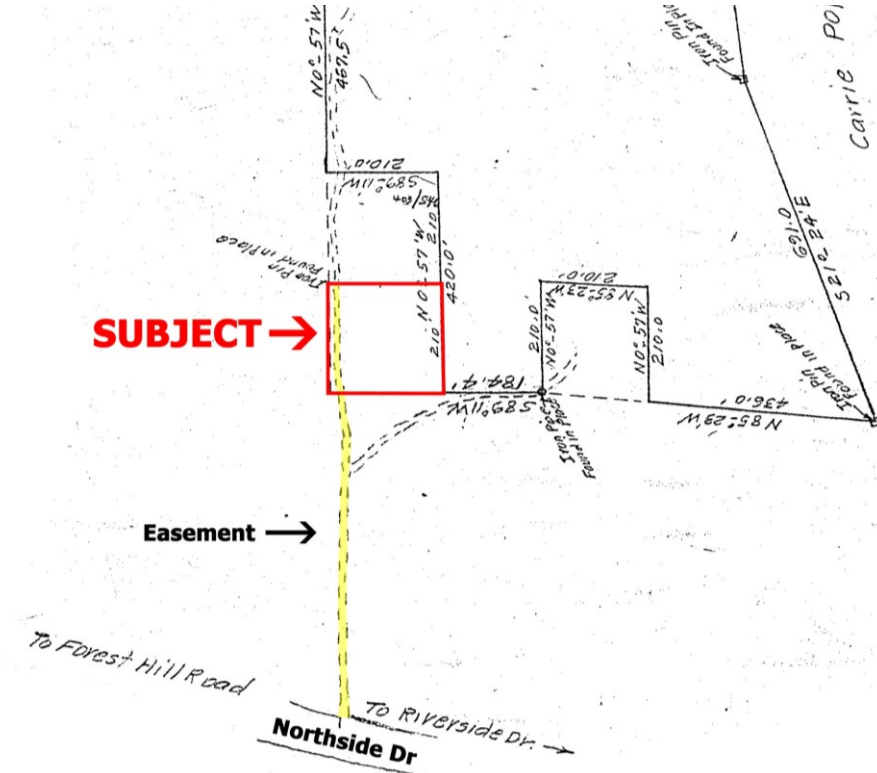


577 Mulberry St, Suite 1100
Macon, GA 31201
478.746.9421 Office
<https://commercial.fickling.com>

SITE MAP



PLAT



CONTACT

Wendy H Pierce, RPA
 478-746-9421 Office
 478-335-1254 Cell
 wpierce@fickling.com

Jenny Howell
 478-746-9421 Office
 786-449-8523 Cell
 jenny@fickling.com



577 Mulberry St, Suite 1100
 Macon, GA 31201
 478.746.9421 Office
<https://commercial.fickling.com>