

1514 119TH ST., WHITING, IN 46394



For more information, please contact:

ANTONY MIOCIC

Director of Office Group

219.864.0200

amiocic@latitudeco.com

CHANDLER KIMMEL

219.864.0200

ckimmel@latitudeco.com



LATITUDE
COMMERCIAL
REAL ESTATE SERVICES

LATITUDECO.COM

LEASING CITY PLACE WHITING

1514 119th St., Whiting, IN 46394



EXECUTIVE SUMMARY



OFFERING SUMMARY

Available SF:	1,586 - 4,640 SF
Lease Rate:	\$14.00 SF/yr (NNN; MG)
Lot Size:	0.34 Acres
Year Built:	2015
Building Size:	35133 SF
Zoning:	Downtown Business Special Zone

PROPERTY HIGHLIGHTS

- Medical office space for lease in Downtown Whiting
- Neighboring 1,600sf retail suite is also available
- Approximately 4,700sf, consisting of seven exam rooms, a kitchenette, three private offices, a procedure room, physical therapy room, nurse station, and a spacious waiting area
- Located on a main thoroughfare with heavy foot traffic and a parking lot in the rear
- Turnkey space currently in pristine condition



ANTONY MIOCIC
Director of Office Group
219.864.0200
amiocic@latitudeco.com

CHANDLER KIMMEL
219.864.0200
ckimmel@latitudeco.com

LEASING CITY PLACE WHITING

1514 119th St., Whiting, IN 46394



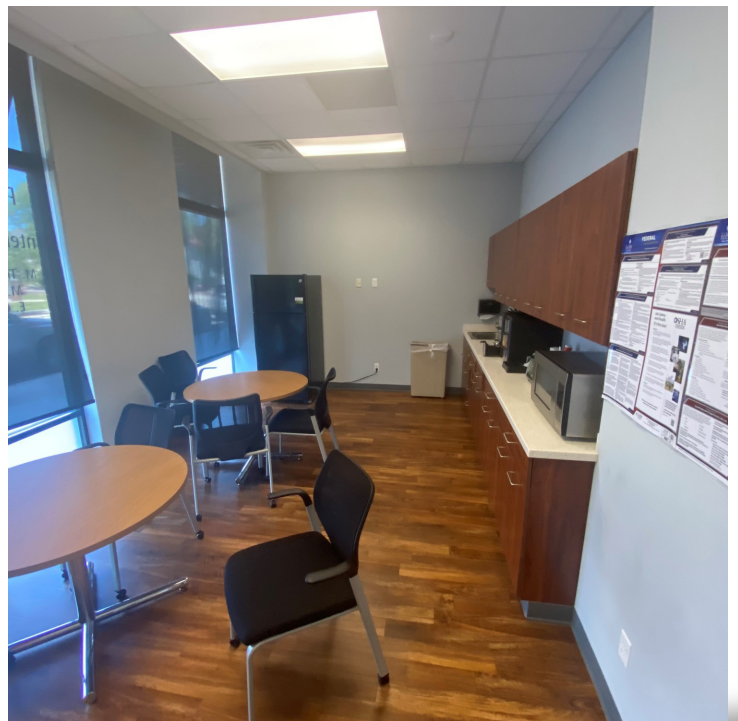
PROPERTY DESCRIPTION

PROPERTY DESCRIPTION

Medical office space for lease in Downtown Whiting located directly on 119th Street. The space consists of approximately 4,700 square feet and is in turnkey pristine condition. Within the suite are seven exam rooms, a kitchenette, three private offices, a procedure room, physical therapy room, nurse station, and a spacious waiting area. Next door, a 1,600sf retail suite formerly occupied by a nail salon is also available. Heavy foot traffic combined with a parking lot in the rear of the building make this a highly desirable location in the area. NN lease with tenant paying taxes and CAMs, currently estimated at \$4/sf.

LOCATION DESCRIPTION

This property is located on 119th Street in Downtown Whiting. This area is a downtown business district occupied by numerous retail and office users. Downtown Whiting is one of the few areas in Northwest Indiana with heavy foot traffic. Whiting is a city located in the Chicago Metropolitan Area in Lake County, Indiana, which was founded in 1889. The city is located on the southern shore of Lake Michigan. It is roughly 16 miles from the Chicago Loop and two miles from Chicago's South Side. Whiting is home to Whiting Refinery, the largest oil refinery in the Midwest.



ANTONY MIOCIC

Director of Office Group
219.864.0200
amiocic@latitudeco.com

CHANDLER KIMMEL

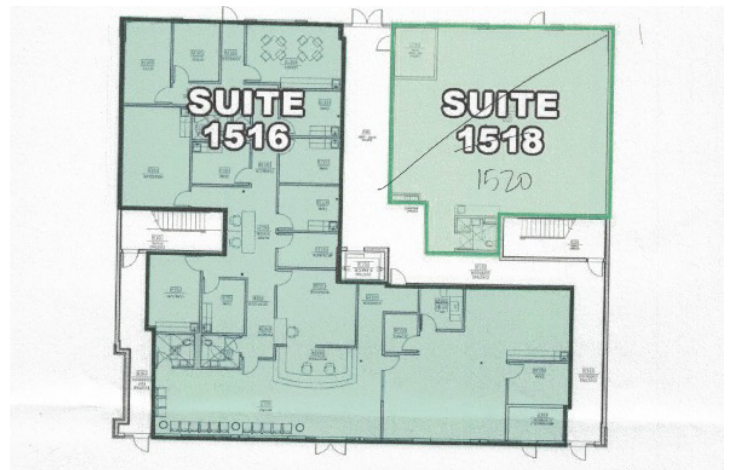
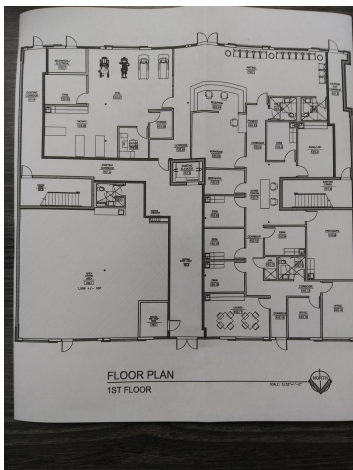
219.864.0200
ckimmel@latitudeco.com

LEASING CITY PLACE WHITING

1514 119th St., Whiting, IN 46394



ADDITIONAL PHOTOS



ANTONY MIOCIC
Director of Office Group
219.864.0200
amiocic@latitudeco.com

CHANDLER KIMMEL
219.864.0200
ckimmel@latitudeco.com

LEASING CITY PLACE WHITING

1514 119th St., Whiting, IN 46394



LEASE SPACES



LEASE INFORMATION

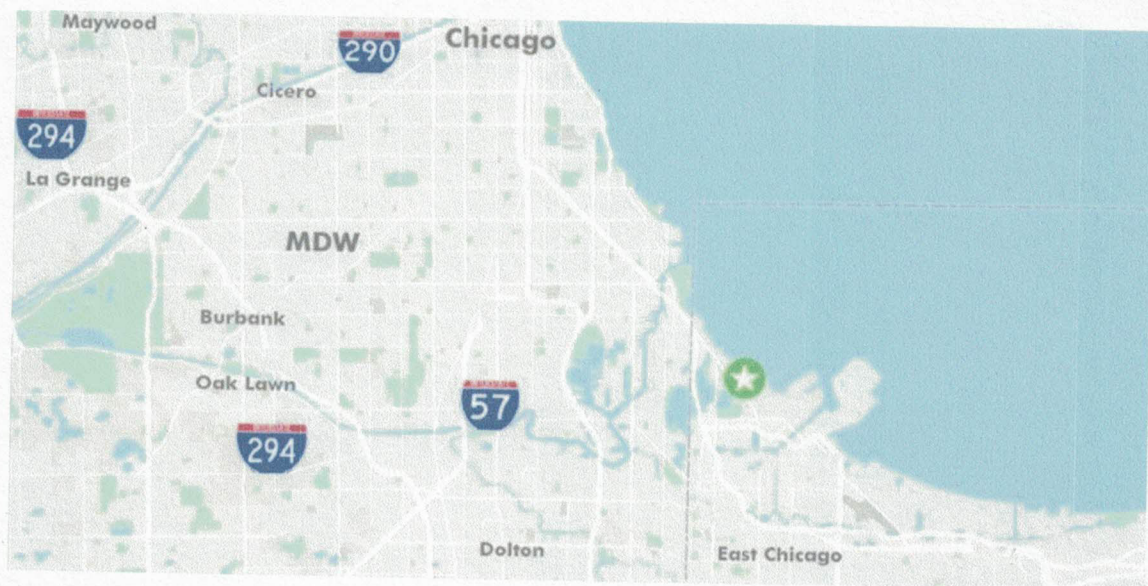
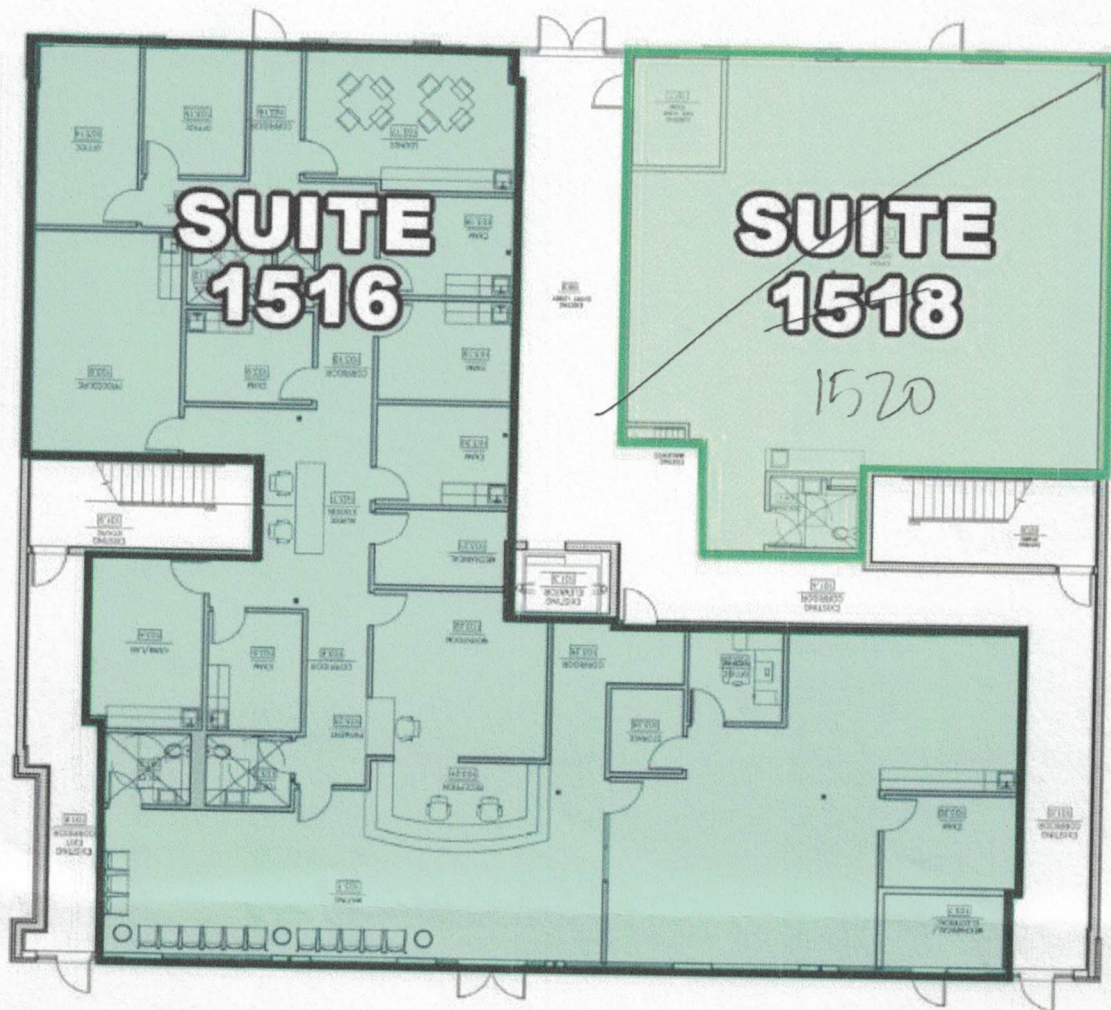
Lease Type:	NNN; MG	Lease Term:	Negotiable
Total Space:	1,586 - 4,640 SF	Lease Rate:	\$14.00 SF/yr

AVAILABLE SPACES

SUITE	TENANT	SIZE (SF)	LEASE TYPE	LEASE RATE	DESCRIPTION
1516 119th St	Available	4,640 SF	NNN	\$14.00 SF/yr	-
1520 119th St	Available	1,586 SF	Modified Gross	\$14.00 SF/yr	-

ANTONY MIOCIC
Director of Office Group
219.864.0200
amiocic@latitudeco.com

CHANDLER KIMMEL
219.864.0200
ckimmel@latitudeco.com

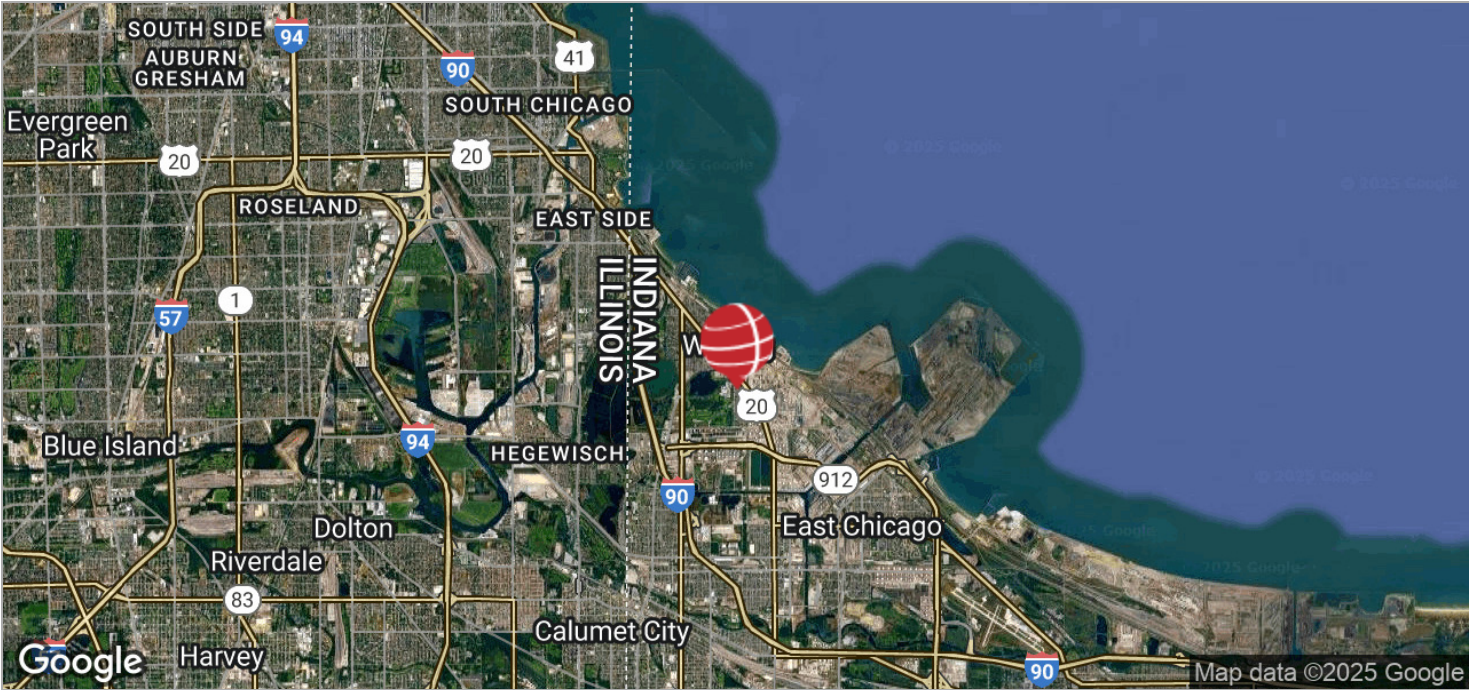
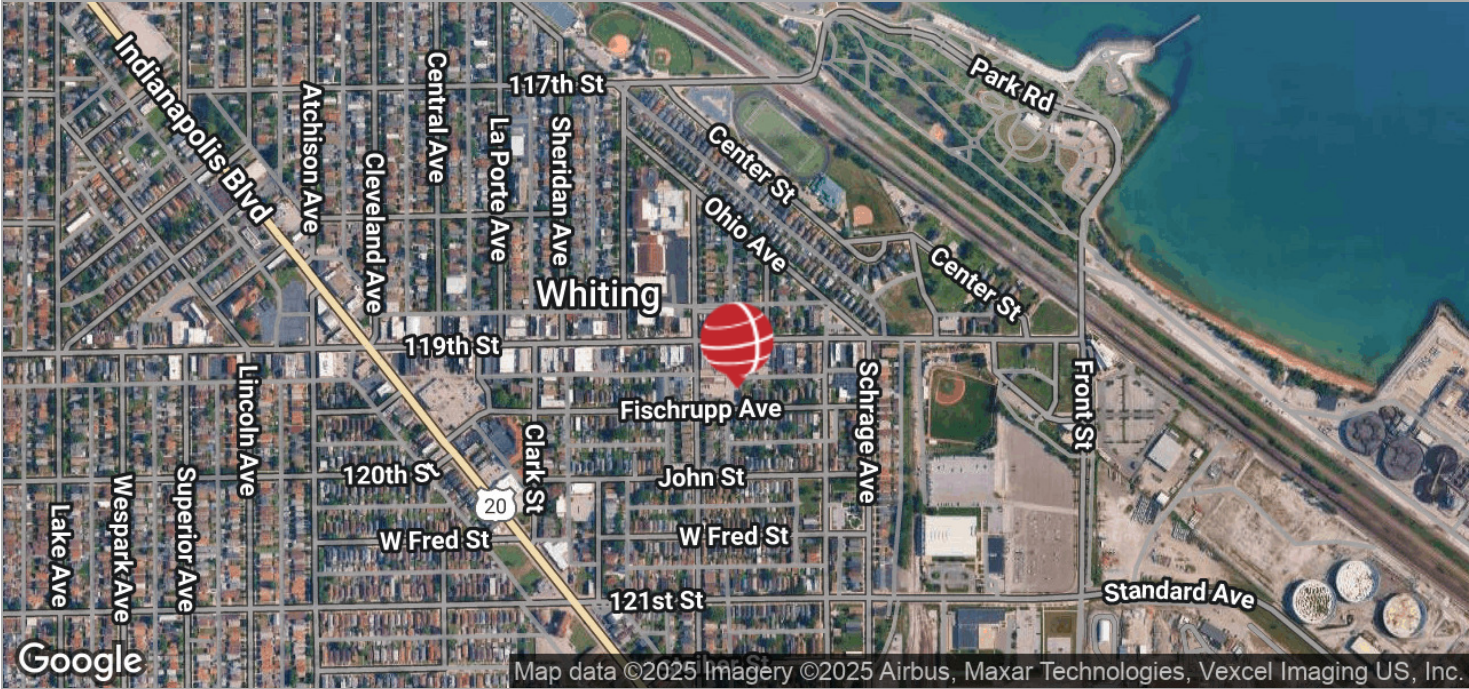


LEASING CITY PLACE WHITING

1514 119th St., Whiting, IN 46394



LOCATION MAPS



ANTONY MIOCIC
Director of Office Group
219.864.0200
amiocic@latitudeco.com

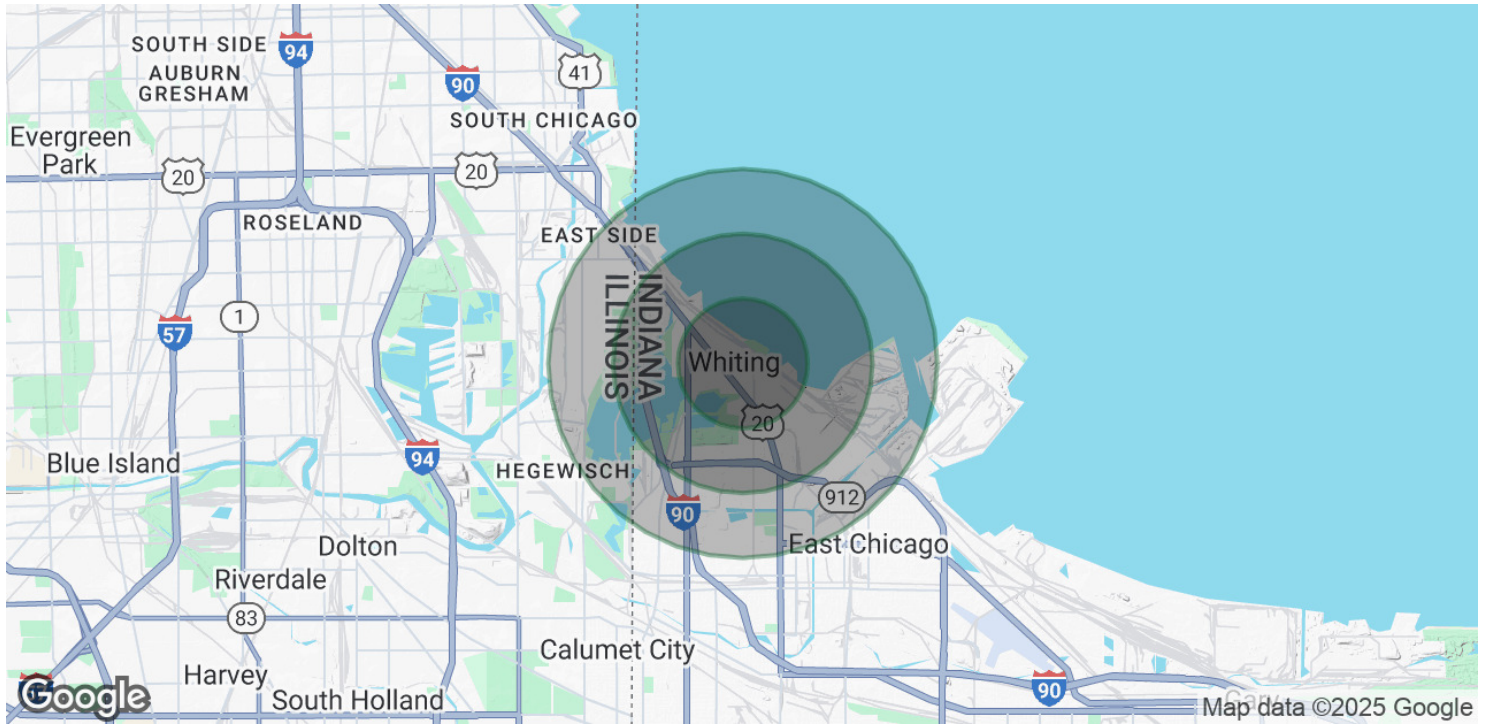
CHANDLER KIMMEL
219.864.0200
ckimmel@latitudeco.com

LEASING CITY PLACE WHITING

1514 119th St., Whiting, IN 46394



DEMOGRAPHICS MAP & REPORT



POPULATION

	1 MILE	2 MILES	3 MILES
Total Population	9,915	16,903	35,125
Average Age	38.0	37.5	35.8
Average Age (Male)	37.7	37.7	36.4
Average Age (Female)	39.9	39.1	36.6

HOUSEHOLDS & INCOME

	1 MILE	2 MILES	3 MILES
Total Households	3,796	6,407	12,552
# of Persons per HH	2.6	2.6	2.8
Average HH Income	\$54,101	\$52,368	\$52,410
Average House Value	\$133,820	\$127,775	\$128,531

* Demographic data derived from 2020 ACS - US Census

ANTONY MIOCIC

Director of Office Group
219.864.0200
amiocic@latitudeco.com

CHANDLER KIMMEL

219.864.0200
ckimmel@latitudeco.com