

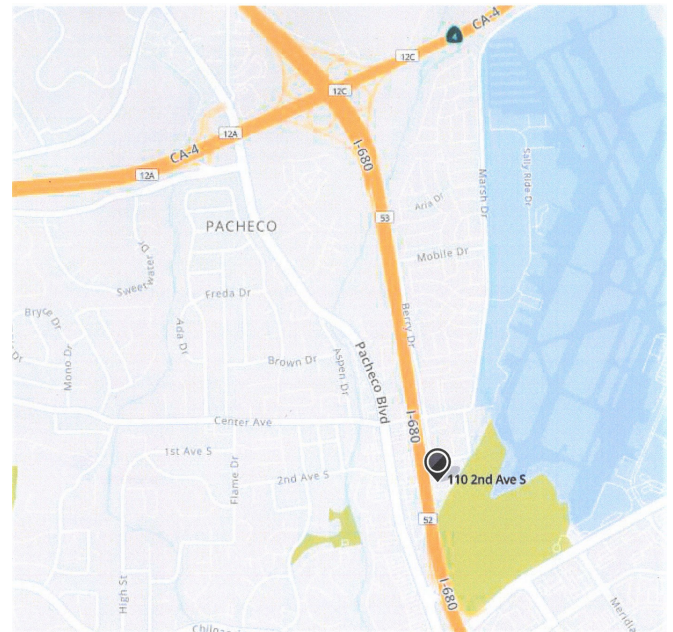
Light Industrial/Commercial FOR LEASE

110 Second Avenue South, Suite B-17
Pacheco, California



Property Information:

- **FOR LEASE: LIGHT INDUSTRIAL/ COMMERCIAL SPACE IN PACHECO**
- **APPROX. 2,000 RENTABLE SQUARE FEET**
- **RATE: \$1.75 PER SQUARE FOOT I.G.**
- **END UNIT WITH GOOD PARKING/ACCESS**
- **ONE RESTROOM IN THE UNIT**
- **FREEWAY FRONTAGE PROJECT WITH EXCELLENT VISIBILITY AND IDENTITY**
- **ONE GRADE LEVEL 12' X 12' DOOR, INSULATED CEILING, SKYLIGHTS**
- **100 AMP 120/208 VOLT 3 PHASE POWER**
- **CENTRAL LOCATION WITH GOOD ACCESS TO HWY 4 AND INTERSTATE 680**



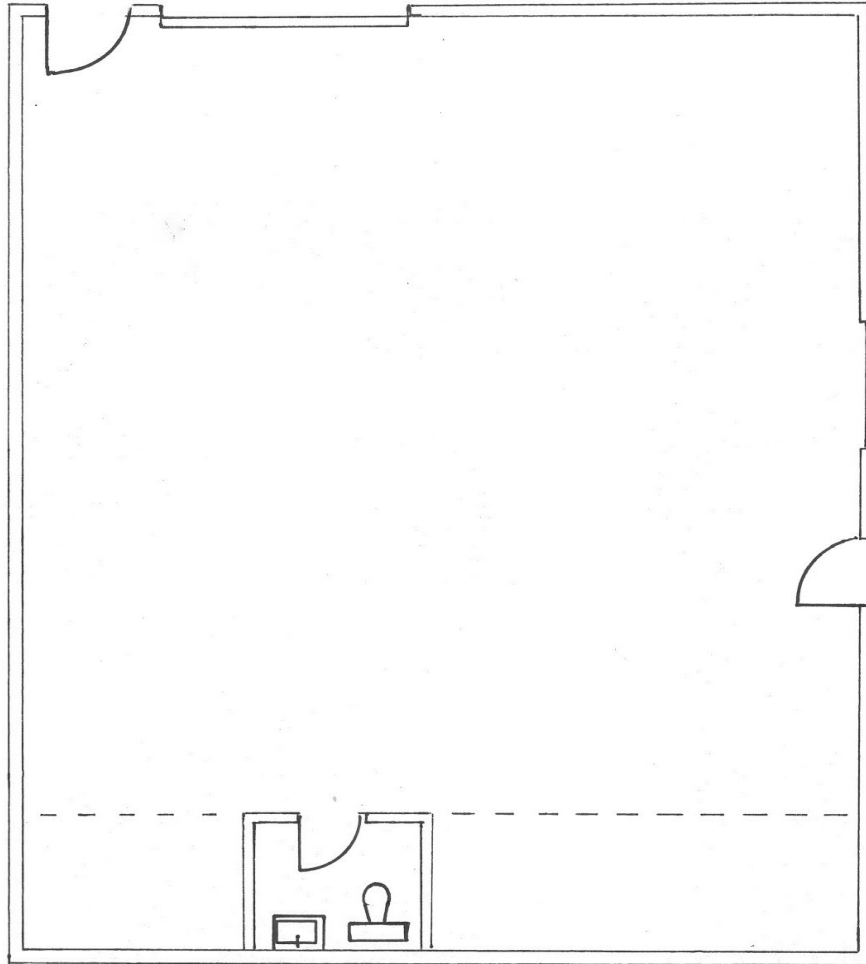
Contact Listing Brokers:

Thomas Caple
Deutscher Properties Corp
(510) 908-0505
tom@dpccommercial.com

Tom Cranmer
Cranmer Assoc. Inc.
(925) 933-1044
tom@cranmerassociatesinc.com

Deutscher Properties Corp.
370 Civic Drive
Pleasant Hill, CA
Office (925) 676-6166
Fax (925) 676-6177

110 Second Avenue South, Suite B-17
Pacheco, California - FLOOR PLAN



Contact Listing Brokers:

Thomas Caple
Deutscher Properties Corp
CA BRE# 01089011
(510) 908-0505
tom@dpccommercial.com

Tom Cranmer
Cranmer & Assoc., Inc.
CA BRE# 00370734
(925) 933-1044
tom@cranmerassociatesinc.com

Deutscher Properties Corp.
370 Civic Drive
Pleasant Hill, CA
Office (925) 676-6166
Fax (925) 676-6177
www.dpccommercial.com

110 Second Avenue South, Suite B-17 Pacheco, California - SITE PLAN



Contact Listing Brokers:

Thomas Caple
Deutscher Properties Corp
CA BRE# 01089011
(510) 908-0505
tom@dpccommercial.com

Tom Cranmer
Cranmer & Assoc., Inc.
CA BRE# 00370734
(925) 933-1044
tom@cranmerassociatesinc.com

Deutscher Properties Corp.
370 Civic Drive
Pleasant Hill, CA
Office (925) 676-6166
Fax (925) 676-6177
www.dpccommercial.com