

# Prime Retail Space Available

Downtown Memphis

150 Peabody Pl.  
Memphis, TN 38103  
[www.cbre.com/150Peabody](http://www.cbre.com/150Peabody)

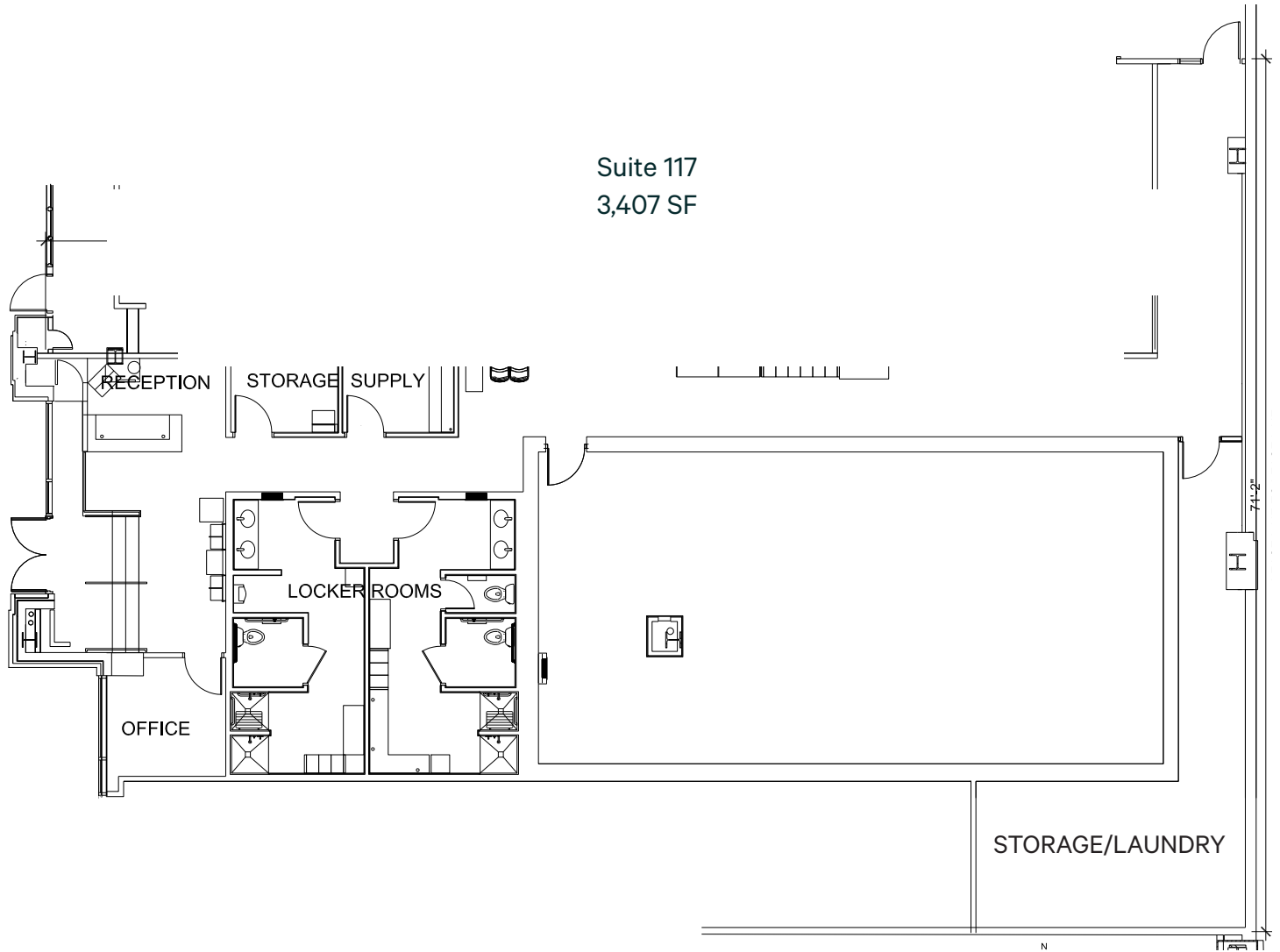


# Property Information

- + 3,407 SF Retail Space
  - + Adjacent to historic Peabody Hotel
  - + Excellent frontage at one of the busiest streets in downtown Memphis
  - + Attached parking garage with over 1,000 parking spaces
  - + Easy access to public transit system
- + Surrounded by numerous boutiques and entertainment
  - + Within walking distance to
    - Beale Street
    - AutoZone Park
    - FedEx Forum
    - Peabody Hotel
    - Orpheum Theatre



# Space Plan



## Contact Us

**Patrick Reilly**  
First Vice President  
+1 901 260 1054  
patrick.reilly@cbre.com

© 2026 CBRE, Inc. All rights reserved. This information has been obtained from sources believed reliable, but has not been verified for accuracy or completeness. You should conduct a careful, independent investigation of the property and verify all information. Any reliance on this information is solely at your own risk. CBRE and the CBRE logo are service marks of CBRE, Inc. All other marks displayed on this document are the property of their respective owners, and the use of such logos does not imply any affiliation with or endorsement of CBRE. Photos herein are the property of their respective owners. Use of these images without the express written consent of the owner is prohibited.