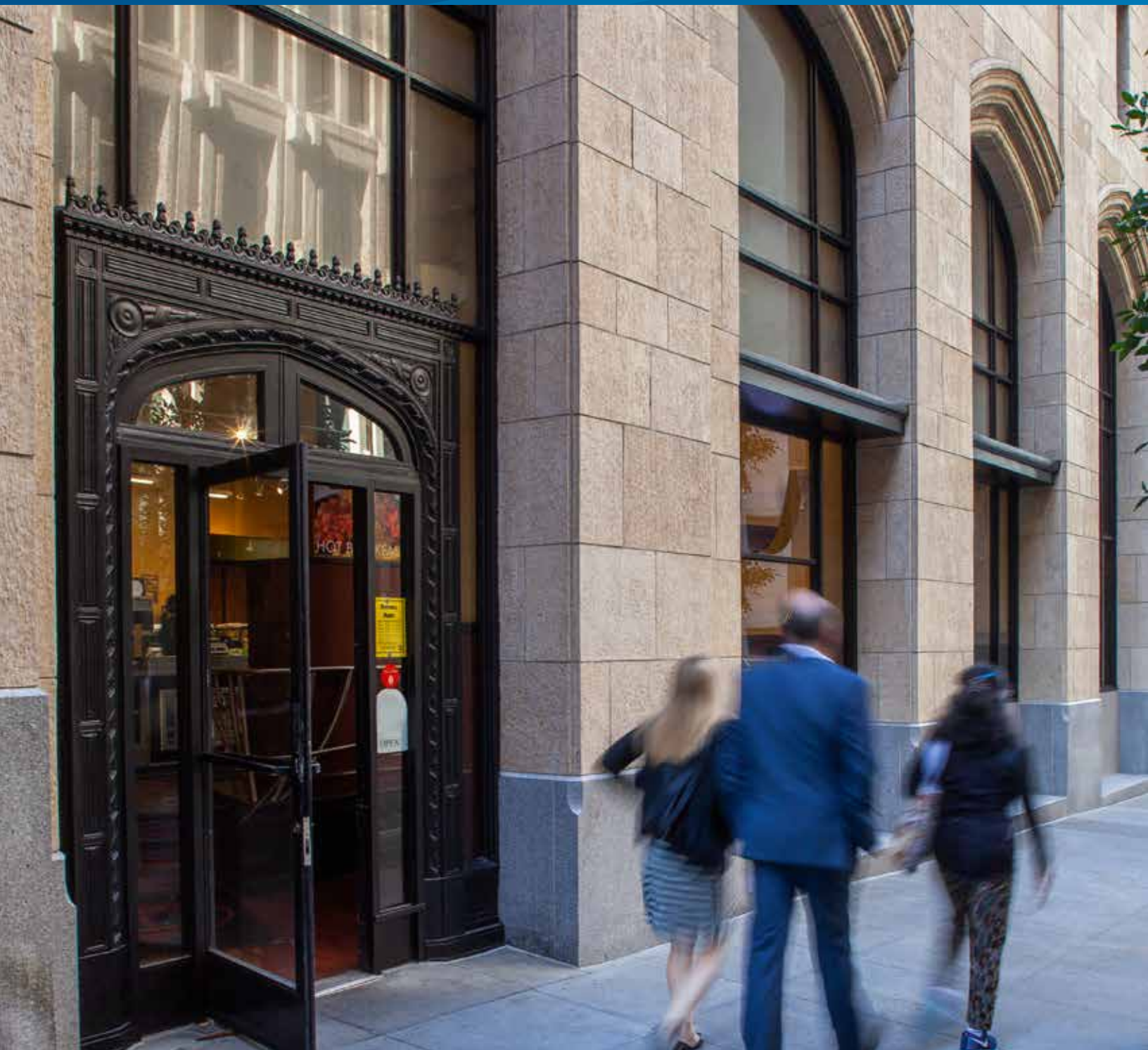


FOR LEASE > RESTAURANT SPACE

THE RUSS BUILDING

235 MONTGOMERY STREET, SAN FRANCISCO, CA



ERIKA ELLIOTT

lic. 01234477

415 293 6295

erika.elliott@colliers.com

JULIE TAYLOR

lic. 00998395

415 293 6293

julie.taylor@colliers.com

COLLIERS INTERNATIONAL

101 Second Street, 11th Floor

San Francisco, CA 94105

www.colliers.com/sanfrancisco



Before 555 California Street, before the Transamerica Building, and *even before the Golden Gate and Bay Bridges*, there was the Russ Building; it is an icon of San Francisco’s Civic Pride during the Roaring Twenties. Through nine decades, it was home to a number of restaurants, retailers and amenities that supported the Financial District.

Come be a part of this incredible San Francisco tradition and serve the needs of the busy Financial District today!



FOR LEASE › RETAIL/RESTAURANT SPACE

THE RUSS BUILDING

235 MONTGOMERY STREET, SAN FRANCISCO, CA



Site Summary

Main Floor	± 3,449 rsf
Mezzanine	± 1,152 rsf
Total	± 4,601 rsf

Employment & Daytime Population

- › Over 12,000,000 Square Feet of Office within two block radius
- › Over 60,000 Employees within a two block radius
- › Major employers include: Twitch (Amazon), LinkedIn, Microsoft, Atlassian

Tourism

- › San Francisco attracts over 16.3 million visitors annually, with \$7.3 billion in revenue
- › There are over 1,200 hotel rooms within a 2 block radius of 235 Montgomery Street: Omni Hotel; Loews Regency Hotel; Galleria Park Hotel and Sheraton Palace

Transportation & Parking

- › Over 33,000 per weekday exits for Montgomery BART/ MUNI station
- › Parking: 350 stalls onsite
- › Major North/South pedestrian thoroughfare
- › Convenient to all modes of transportation

Property Highlights

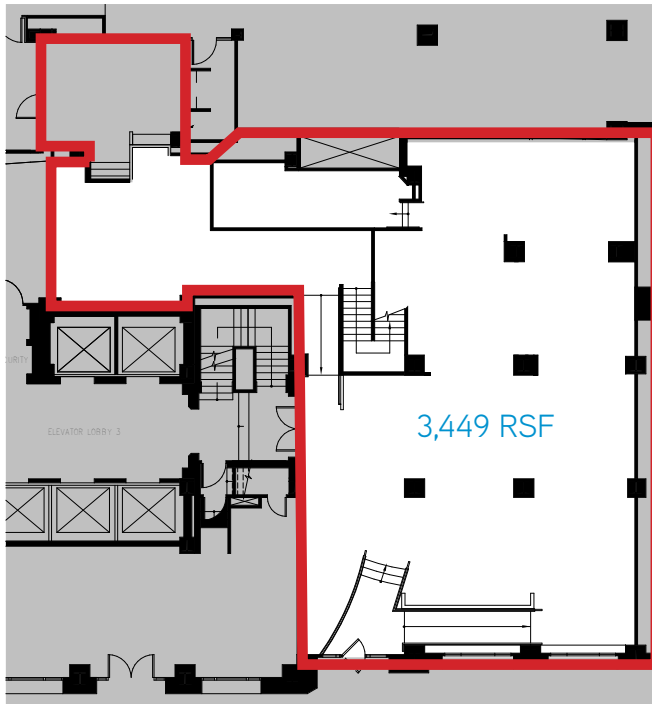
- › California State Historic Landmark, constructed in 1927
- › 31-story, 475,000 square foot office building
- › Classical, neo-Gothic architecture that enhances modern, creative interiors. Exposed concrete and brick possible.



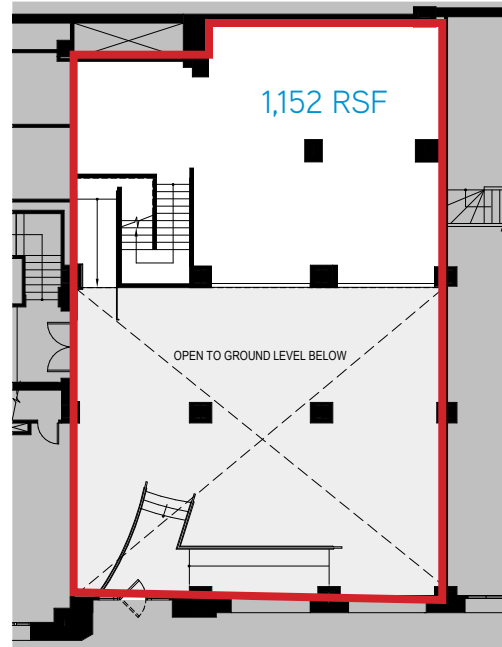
FOR LEASE > RETAIL SPACE

THE RUSS BUILDING

235 MONTGOMERY STREET, SAN FRANCISCO, CA



Main Floor

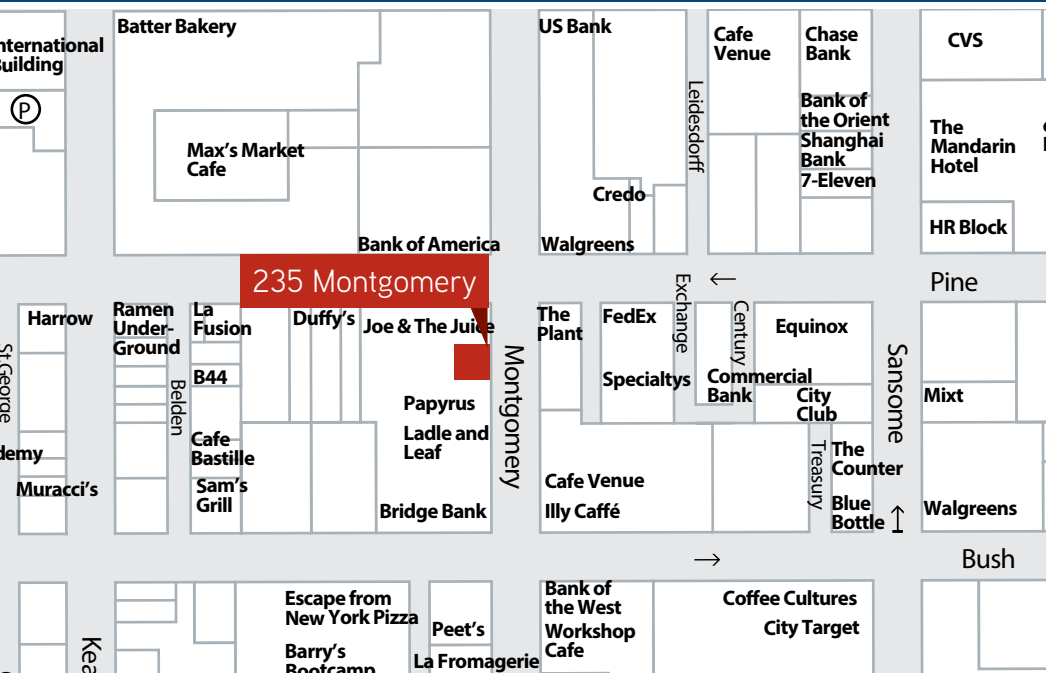


Mezzanine

CEILING HEIGHTS

Main floor - 25' 7" slab to slab

Mezzanine - 10'10" slab to slab



Contact Us

ERIKA ELLIOTT

lic. 01234477

415 293 6295

erika.elliott@colliers.com

JULIE TAYLOR

lic. 00998395

415 293 6293

julie.taylor@colliers.com

COLLIERS INTERNATIONAL

101 Second Street, 11th Floor

San Francisco, CA 94105

www.colliers.com/sanfrancisco

This marketing piece has been prepared by Colliers International for general information only. Information contained herein has been obtained from sources deemed reliable and no representation is made as to the accuracy thereof. Colliers International does not guarantee, warrant or represent that the information contained in this document is correct. Any interested party should undertake their own inquiries as to the accuracy of the information. Colliers International excludes unequivocally all inferred or implied terms, conditions and warranties arising out of this document and excludes all liability for loss and damages arising there from.

