

MRG

For Lease



3818 Nostrand Ave

Turn-key Medical For Lease

2,100 sq ft | 3818 Nostrand | Brooklyn, NY 11235

MI

PROPERTY DETAILS



OVERVIEW

- **Address:** 3818 Nostrand Ave, Brooklyn, NY 11235
- **Cross Streets:** Ave Y and Ave Z
- **Neighborhood:** Midwood

SPACE DETAILS

- **Size:** 2,100 sq ft
- **Ceiling Height:** 12 ft
- **Frontage:** 20 ft

HIGHLIGHTS

- Built Out Office
- Built Out Medical
- Good For Vet Clinic, Urgent Care, Therapy Center, After School Space
- Walls Can Be Removed Or Moved

TRANSPORTATION

- 🚊 **Broadway Junction** – J, L, A, C lines; nearby Kosciuszko St, Halsey St, and Chauncey St stations – J line
- 🚌 **Routes B20, B25, B26, B60, B65** with key stops at Broadway/Jamaica Ave, Broadway/Chauncey St, and Broadway/Halsey St
- ✈️ **JFK:** J → Sutphin Blvd → AirTrain (~45–55 min),
LGA: J → Queens Plaza → E → Roosevelt Ave → Q70 SBS (~1 hr)

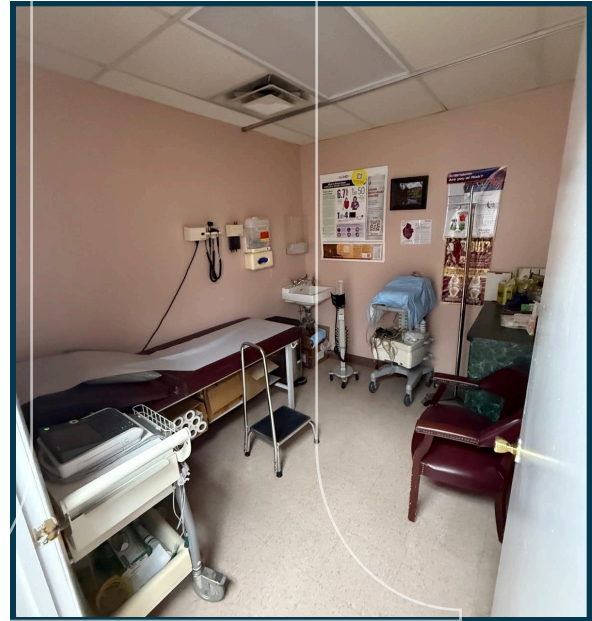
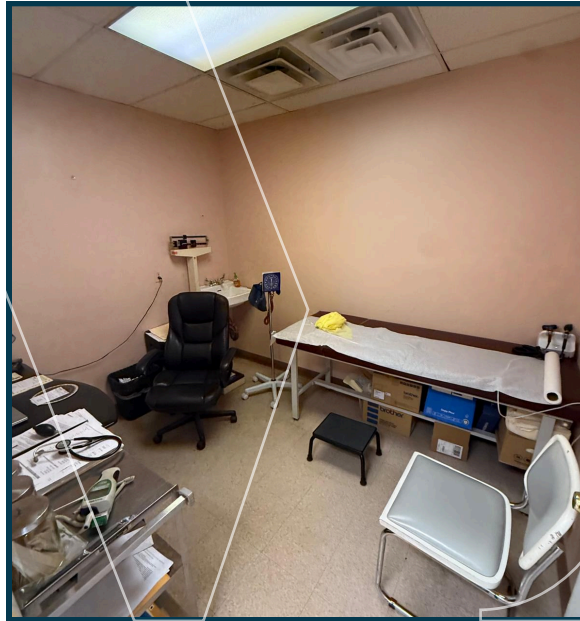
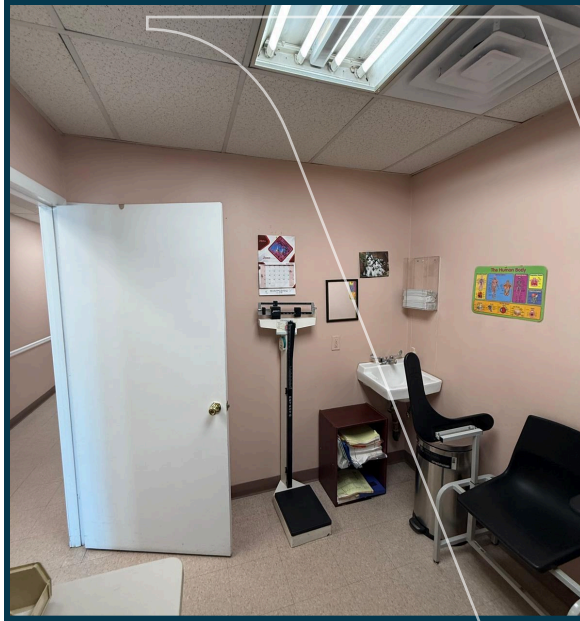
DEMOGRAPHICS

- **Population:** 83,519
- **Median Household Income:** \$107,700
- **Median Home Value:** 26,433

NEIGHBORS

Vanka Cafe, Halal Munchies, Game Night Lounge, Cactus, Umi Premium Sushi & Sea Foods, Popeyes Louisiana Kitchen , Chai Chaska

INTERIOR PHOTOS



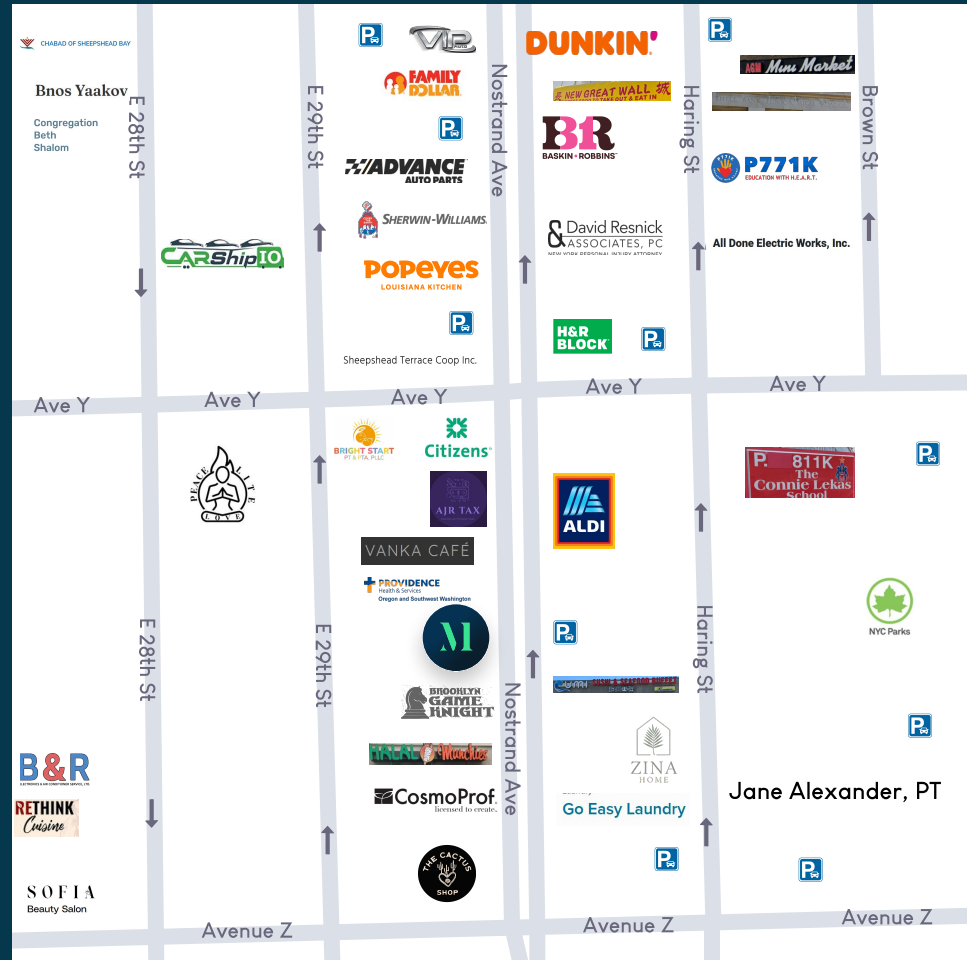
MRG

3818 Nostrand Ave Brooklyn, NY 11235

FOR MORE INFORMATION
PLEASE CONTACT:

MOSHE AKIVA
212-314-4684 Ext. 103
Moshe@mrgny.com

AVI AKIVA
212-314-4684 Ext. 101
Avi@mrgny.com



Turn-key Medical For Lease