



226 W 27th St

Northampton, Pennsylvania 18067

Property Highlights

- Tailgate and drive-in loading
- Outside storage
- Includes a 5,000 SF Pole Barn for storage

Property Overview

Freestanding industrial building, concrete block, masonry and steel construction, built 1956 with additions, 480 volt 3 phase electric, public water and sewer, utility natural gas, 12-18' ceiling height, tailgate and drive-in loading, small basement, outside storage capability, building expansion possible.

Offering Summary

Lease Rate:	\$8.00 SF/yr (NNN)
Operating Expenses:	+/- \$1.52 SF/yr
Building Size:	24,200 SF
Available SF:	24,200 SF
Lot Size:	5.25 Acres

For More Information

Michael Adams, SIOR

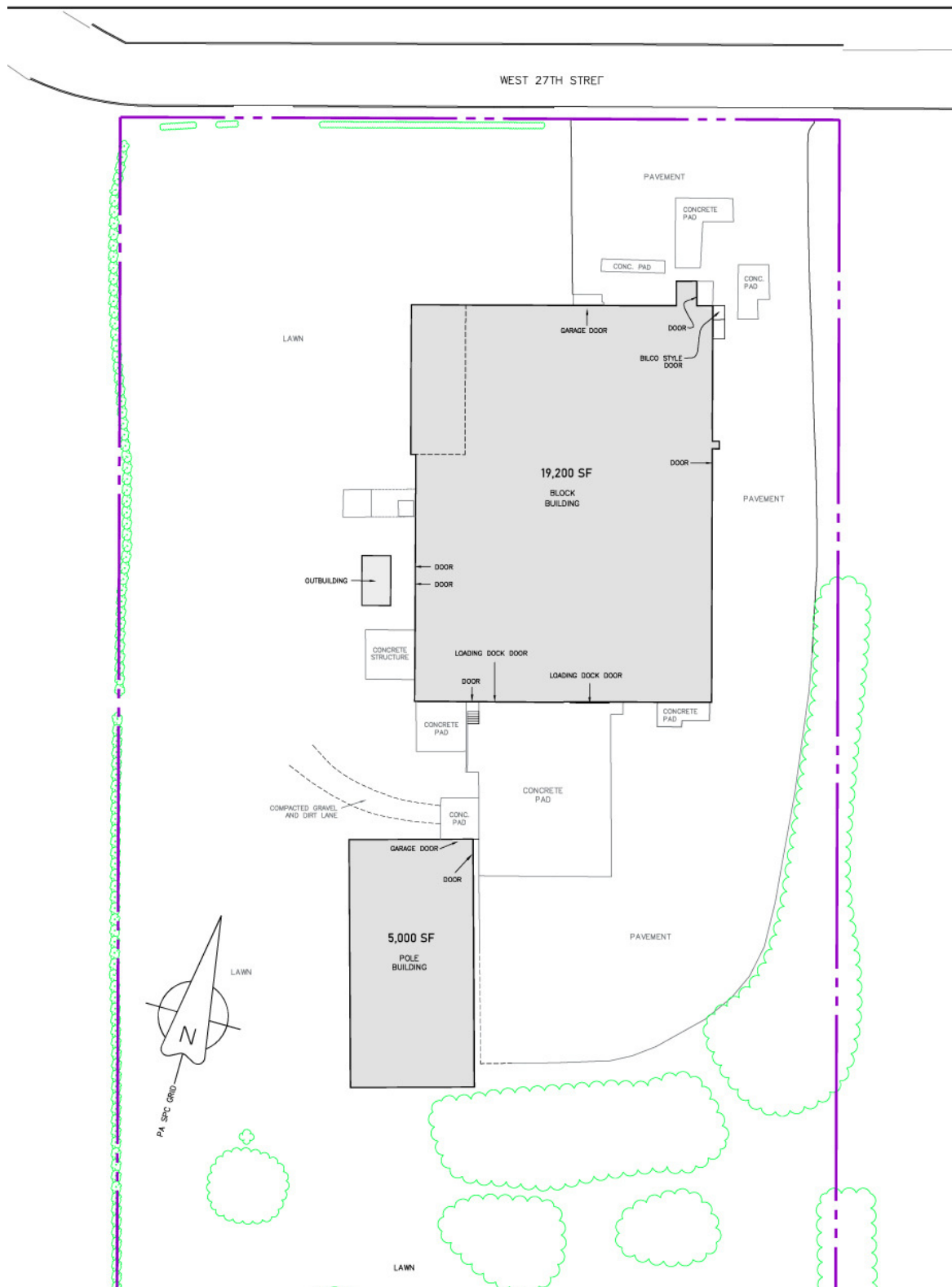
Senior Vice President
O: 610 871 1701
madams@naisummit.com

Sarah Finney Miller

Senior Vice President
O: 610 871 1719
sfinney@naisummit.com

Collin Holben

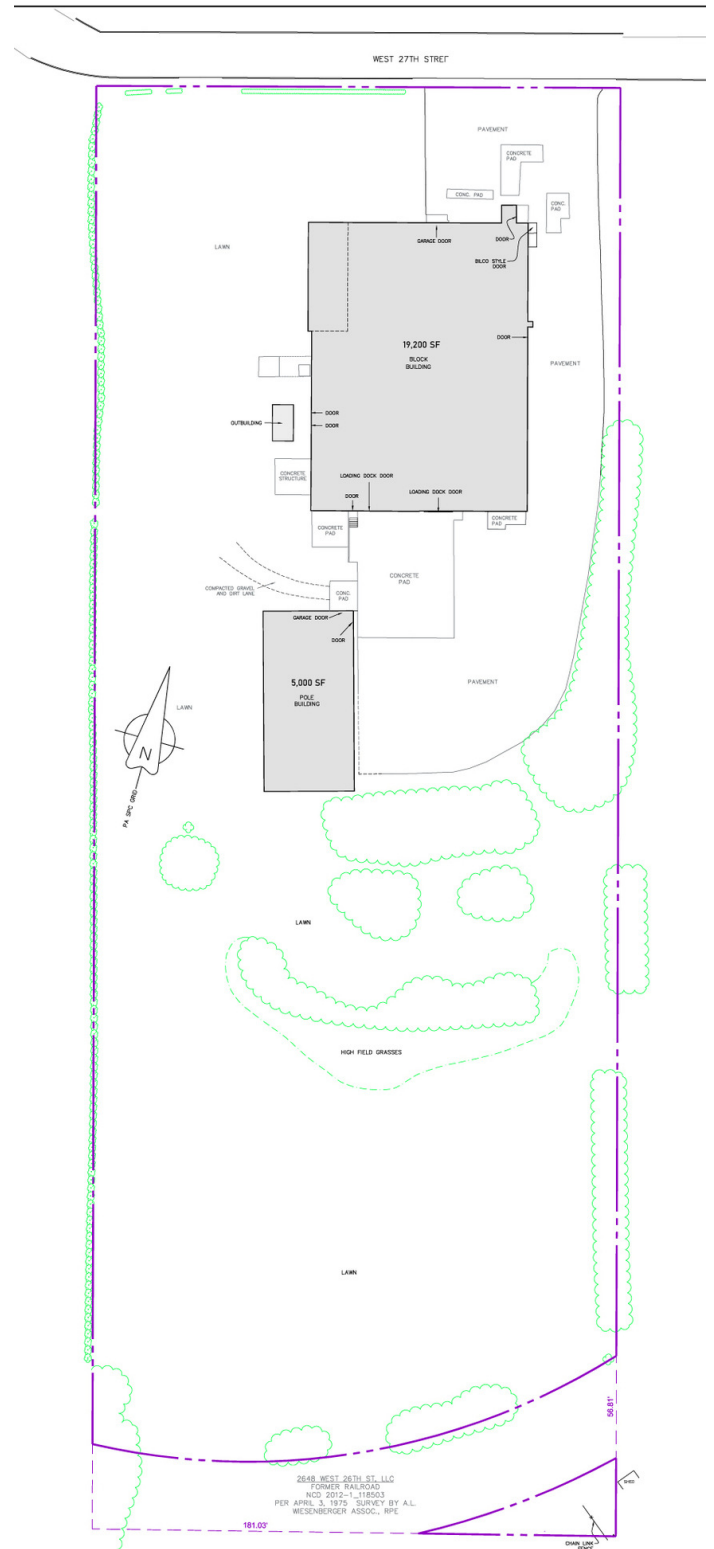
Associate
O: 610 871 1691
cholben@naisummit.com



NAI SUMMIT 610-264-0200

226 W 27th St, Northampton, PA 18067

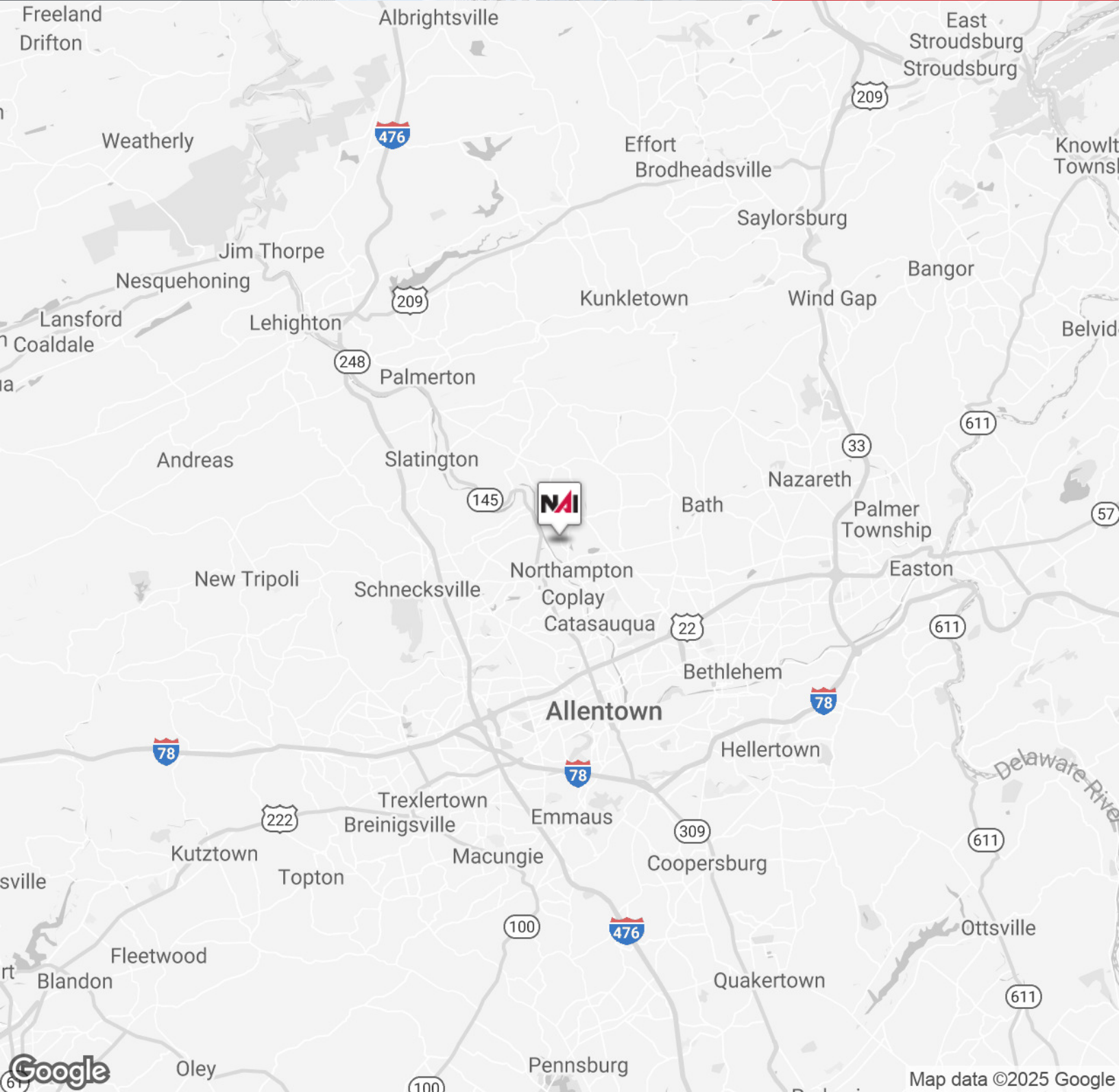
The information contained herein has been obtained from sources believed to be reliable; however, NAI Summit makes no representations, warranties, or guarantees, express or implied, as to the accuracy or completeness of this information. All information is subject to errors, omissions, changes in price, rental, or other conditions, prior sale, lease, or financing, or withdrawal without notice. Any reliance on this information is at your own risk, and you are advised to conduct your own independent review and due diligence. NAI Summit and its logo are service marks of Summit Management and Realty Company d/b/a NAI Summit. All other service marks, trademarks, logos, and images are the property of their respective owners and are used herein for informational purposes only. Unauthorized use of images or materials without written permission is strictly prohibited. All rights reserved.



NAI SUMMIT 610-264-0200

226 W 27th St, Northampton, PA 18067

The information contained herein has been obtained from sources believed to be reliable; however, NAI Summit makes no representations, warranties, or guarantees, express or implied, as to the accuracy or completeness of this information. All information is subject to errors, omissions, changes in price, rental, or other conditions, prior sale, lease, or financing, or withdrawal without notice. Any reliance on this information is at your own risk, and you are advised to conduct your own independent review and due diligence. NAI Summit and its logo are service marks of Summit Management and Realty Company d/b/a NAI Summit. All other service marks, trademarks, logos, and images are the property of their respective owners and are used herein for informational purposes only. Unauthorized use of images or materials without written permission is strictly prohibited. All rights reserved.



NAI SUMMIT 610-264-0200

226 W 27th St, Northampton, PA 18067

The information contained herein has been obtained from sources believed to be reliable; however, NAI Summit makes no representations, warranties, or guarantees, express or implied, as to the accuracy or completeness of this information. All information is subject to errors, omissions, changes in price, rental, or other conditions, prior sale, lease, or financing, or withdrawal without notice. Any reliance on this information is at your own risk, and you are advised to conduct your own independent review and due diligence. NAI Summit and its logo are service marks of Summit Management and Realty Company d/b/a NAI Summit. All other service marks, trademarks, logos, and images are the property of their respective owners and are used herein for informational purposes only. Unauthorized use of images or materials without written permission is strictly prohibited. All rights reserved.