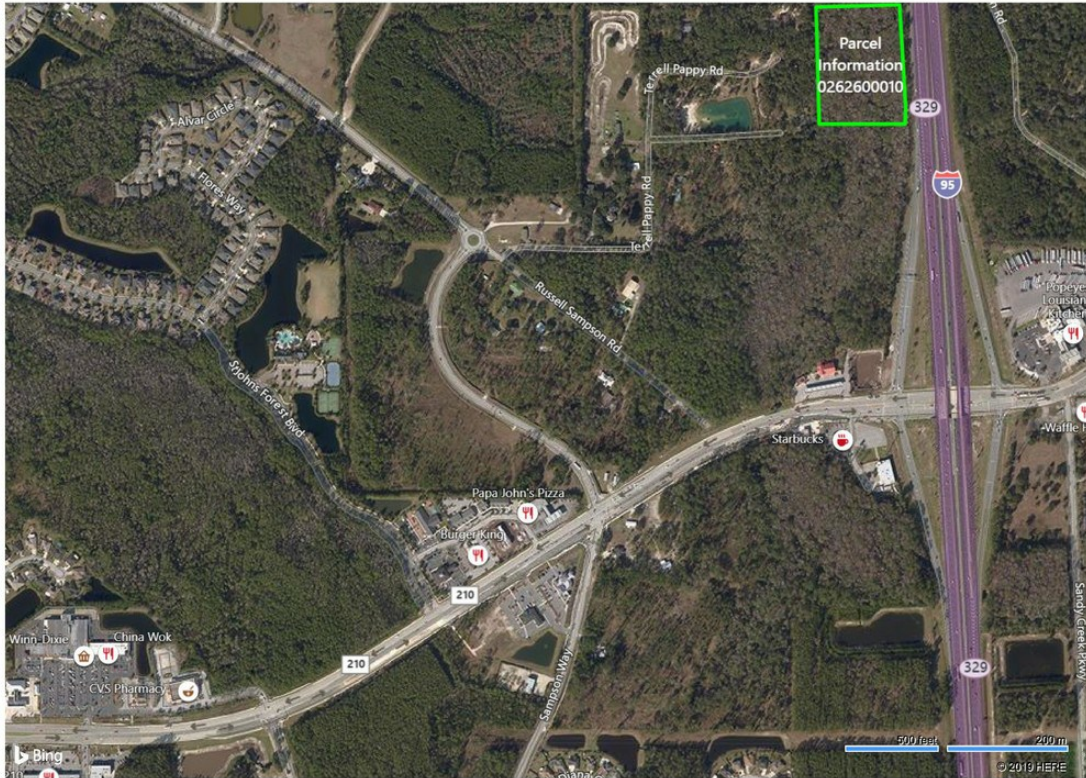


I-95 Frontage - N. (CR-210)-St. Johns

I-95, Saint Augustine, FL 32259 - St. Johns County



Presented by
Watson Commercial Realty, Inc.

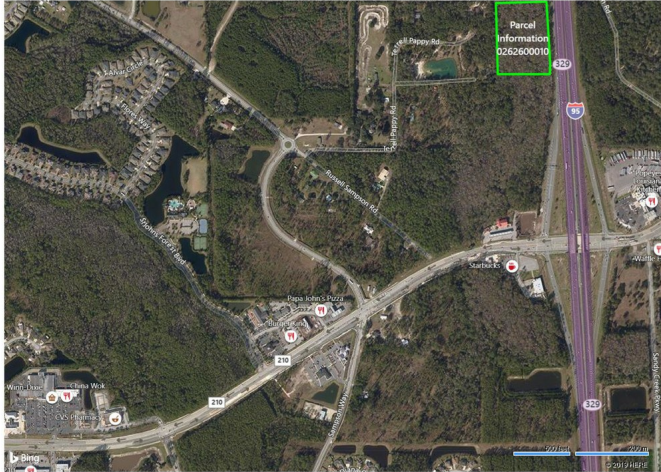


Price: REDUCED TO \$450,000

- Over 675 feet of I-95 Frontage; 1/3 mile north from County Road 210
- No legal access
- Over 50,000 daily traffic volume (CoStar)
- Zoning: Open Rural
- Florida land use designation: Mixed Use (Future Land Use: 2025 Comprehensive Plan, St. Johns County, FL)
- 14th fastest-growing county in America (St. Johns County, FL), U.S. Census Bureau, May 2018
 - o St. Johns County, FL has a population of 218,362, DATAUSA
- One Mile Radius of Property (CoStar)
 - o Median Household Income: \$103,365
 - o Average Age: 38
- Median Household Income in St. Johns County is \$73,640, compared to the state's median income of \$50,883, 247wallstreet.
- St. Johns County School District is one of only two counties in the state of Florida that is an "A" rated district, Florida Department of Education, June 2018
- Healthiest County in the State of Florida, St. Johns County, FL, 247wallstreet.

I-95 Frontage - N. (CR-210)-St. Johns

I-95, Saint Augustine, FL 32259 - St. Johns County



https://www.bing.com/maps?style=b&vi=18&cp=30.070224562363524--81.49974731939602&sp=polygon.30.0693251527286_-81.4989559784267_30.06932522442787_-81.50047716939596_30.0..._2/2

- Over 675 feet of I-95 Frontage; 1/3 mile north from County Road 210
- Over 50,000 daily traffic volume (CoStar)
- Zoning: Open Rural
- Florida land use designation: Mixed Use (Future Land Use: 2025 Comprehensive Plan, St. Johns County, FL)
- 14th fastest-growing county in America (St. Johns County, FL), U.S. Census Bureau, May 2018
 - o St. Johns County, FL has a population of 218,362, DATAUSA
- One Mile Radius of Property (CoStar)
 - o Median Household Income: \$103,365
 - o Average Age: 38
- Median Household Income in St. Johns County is \$73,640, compared to the state's median income of \$50,883, 247wallstreet.
- St. Johns County School District is one of only two counties in the state of Florida that is an "A" rated district, Florida Department of Education, June 2018
- Healthiest County in the State of Florida, St. Johns County, FL, 247wallstreet.



William Messer

wmesser@watsoncommercial.com

(904) 421-7414

Watson Commercial Realty, Inc.

4685 Sunbeam Rd, Suite 1
Jacksonville, FL 32257



I-95 & CR-210 St. Johns County Frontage
Over 675' of I-95 Frontage
14th fastest-growing county in America

I-95 Frontage - N. (CR-210)-St. Johns

I-95, Saint Augustine, FL 32259 - St. Johns County

I-95, Saint Augustine, FL 32259 - St. Johns County

[illegible]

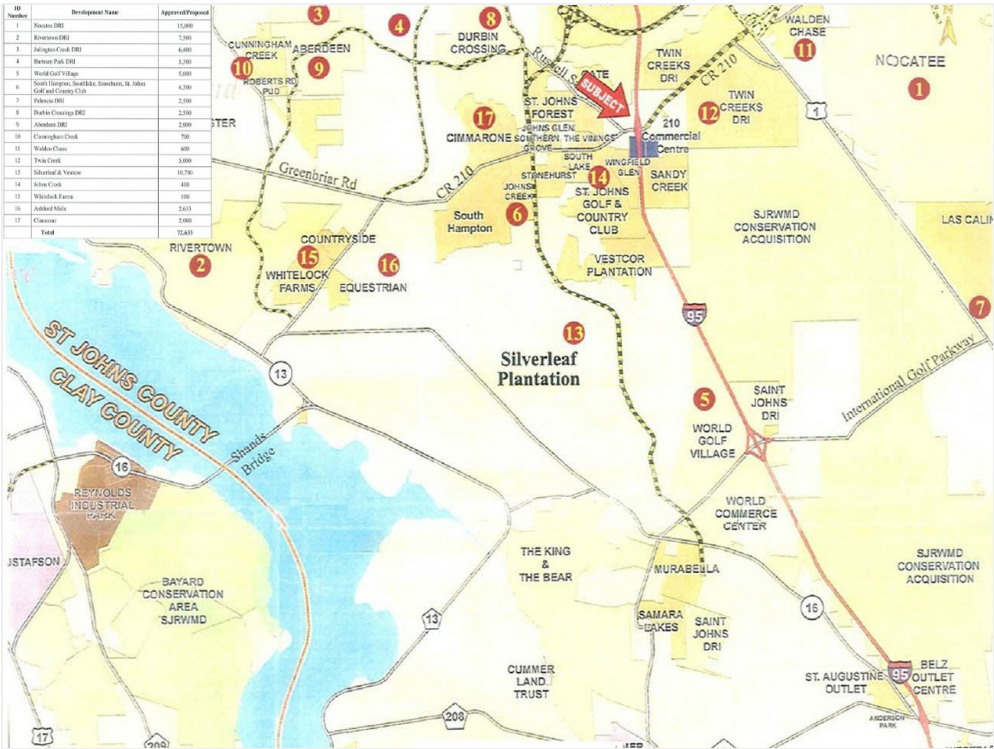
A Google Street View image of a multi-lane highway. A silver minivan is in the left lane, and a red car is further ahead. The road is flanked by trees, and the sky is clear. The Google logo is visible in the bottom center.

I-95 View To CR-210 From Site Interstate Frontage

I-95 Frontage - N. (CR-210)-St. Johns

I-95, Saint Augustine, FL 32259 - St. Johns County

Property Photos



Other

I-95 Frontage - N. (CR-210)-St. Johns

I-95, Saint Augustine, FL 32259 - St. Johns County

Location

