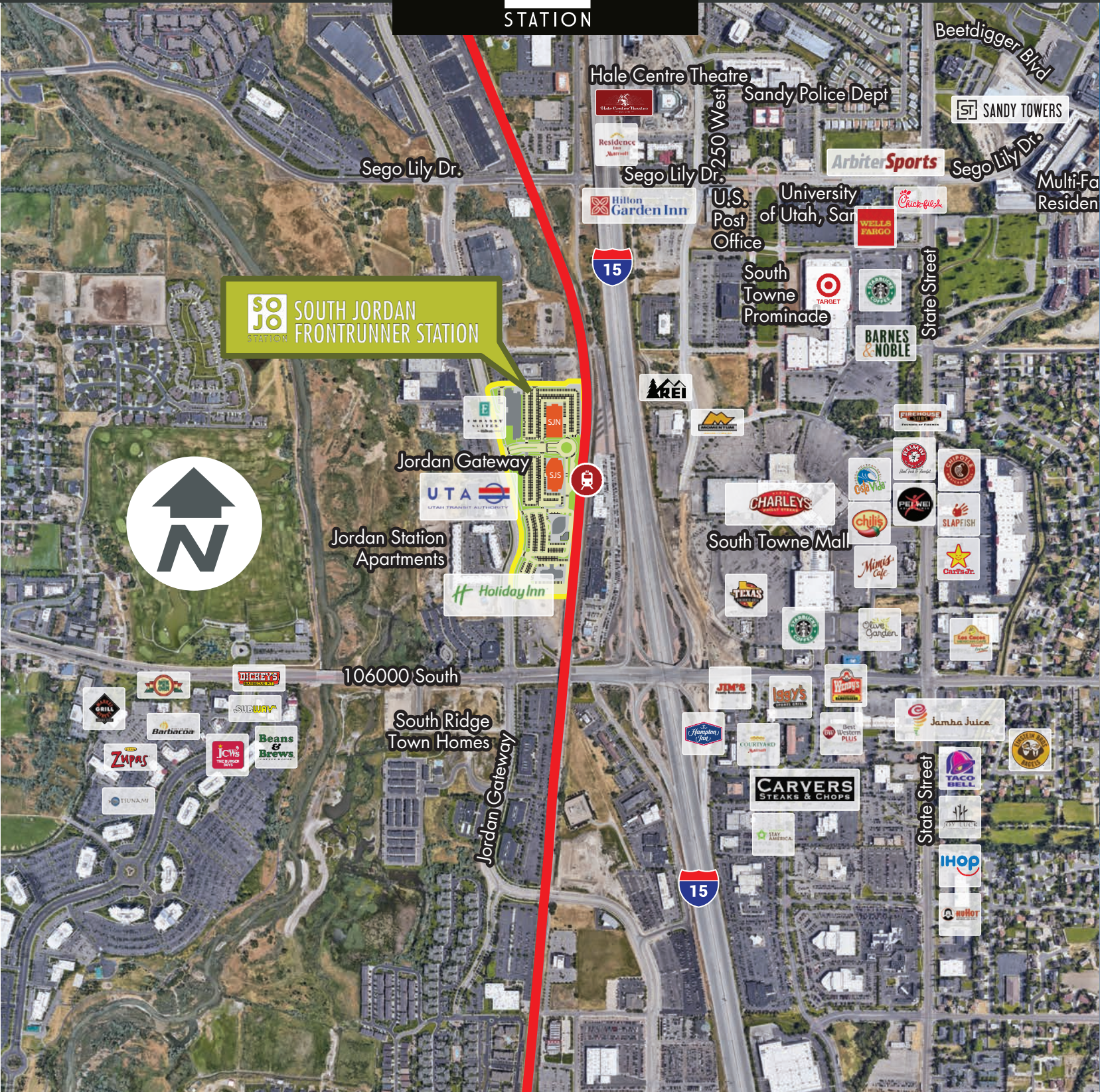


10355 S. South Jordan Gateway  
South Jordan, Utah 84095



AMENITIES MAP

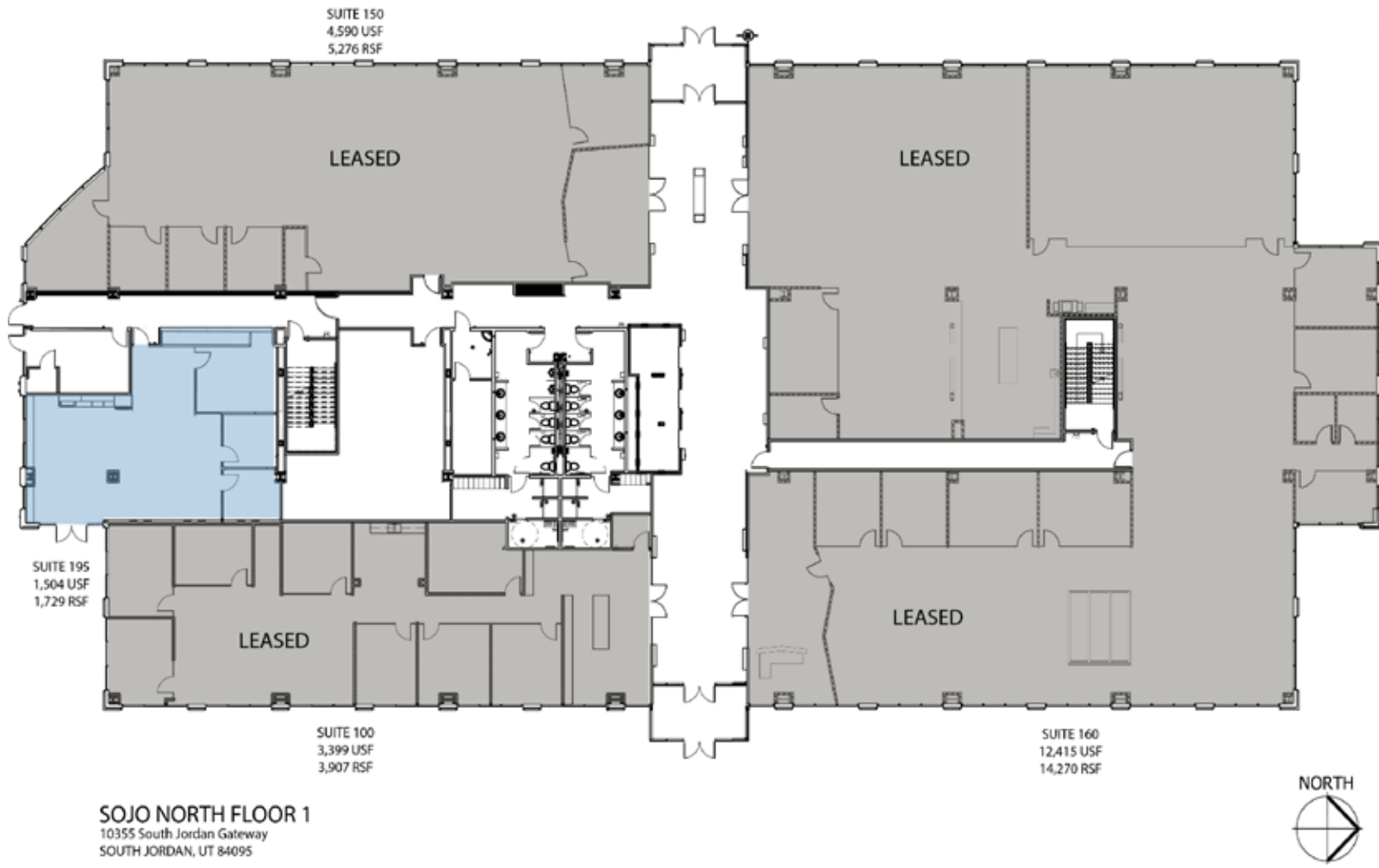


# SOJO SOUTH JORDAN FRONTRUNNER STATION



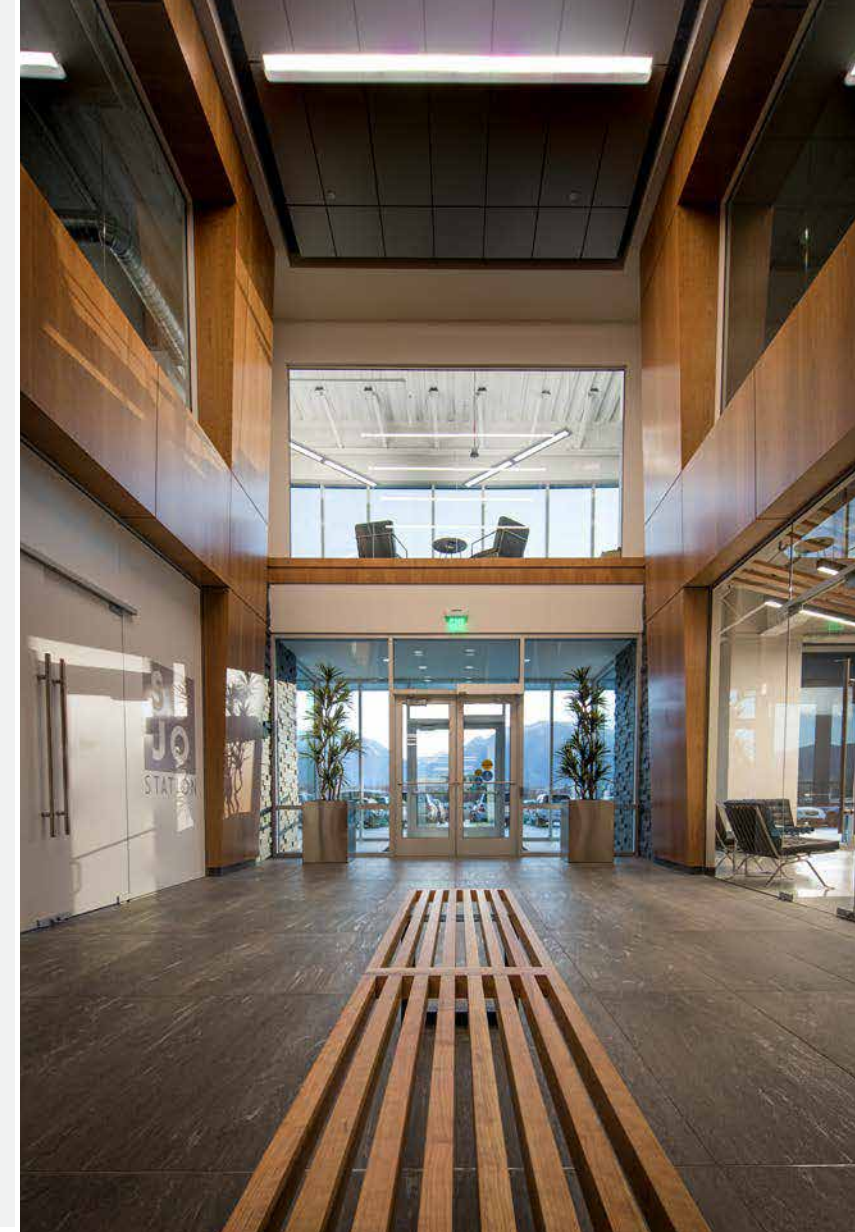
Steve Petersen 801.550.5120  
Andrew Bybee 801.768.0500





### Project Highlights:

- Two Class A six story buildings
- 360,000 RSF of Class A office space
- Floor-to-ceiling glass
- LEED Silver design
- Unmatched front door access to the commuter rail platform with connection option to SLC International Airport
- 192 Room Embassy Suites - Full Service Hotel
- Convenient mid-valley freeway access
- Stunning views of the Wasatch Front mountains and valley
- Structured/covered parking
- Enclosed bike storage
- EV Charging
- Fitness center
- Outdoor seating area
- Building backup generator
- Less than a mile from the River Jordan Parkway Trail
- Recycling program
- Prime signage visibility from the interstate



# SOJO STATION NORTH

located at

South Jordan  
FrontRunner Station

Level 1 | Leases Available



Steve Petersen  
801.550.5120

Andrew Bybee  
801.768.0500

**SOJO** SOUTH JORDAN  
STATION FRONTRUNNER STATION

SoJo Station North  
10355 S Jordan Gateway  
South Jordan, UT 84095