



2951 Pennsylvania Ave  
Ogden, UT 84401

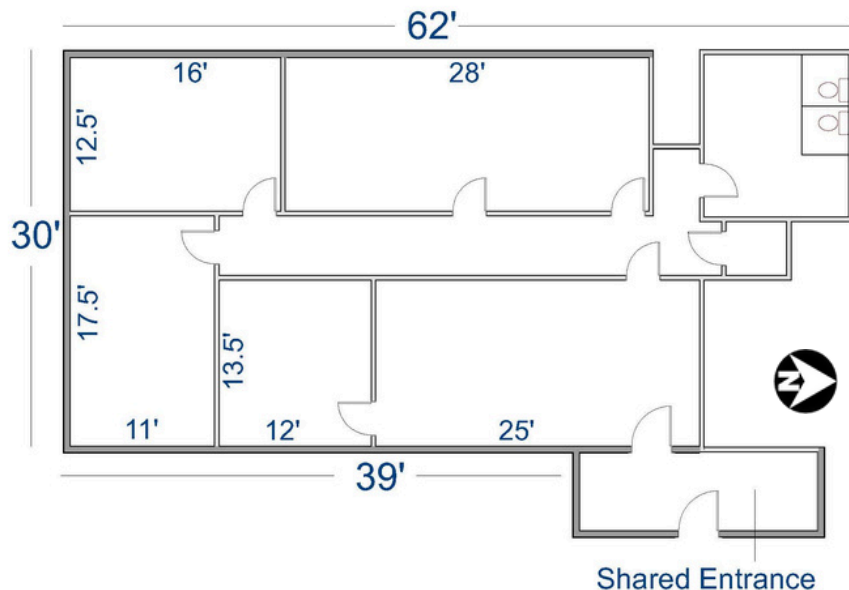
Lease Price  
**\$1,195.00**  
/NNN



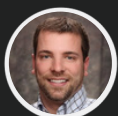
**FOR LEASE**

## Property Features

- ✓ ± 1,590 SF Office Available
- ✓ Zoned Ogden City M-2
- ✓ Multiple Private Offices
- ✓ Large Conference Room
- ✓ Frontage on Busy Pennsylvania Ave
- ✓ Space on Pylon Sign
- ✓ Ample Parking for Employees/Clients
- ✓ Direct Access to Freeway & Major Roads
- ✓ Tenant Improvements Negotiable
- ✓ MLS #2065117



## Contact Agents



**Aaron McCrady**  
801-953-7012  
aaroncrest@gmail.com

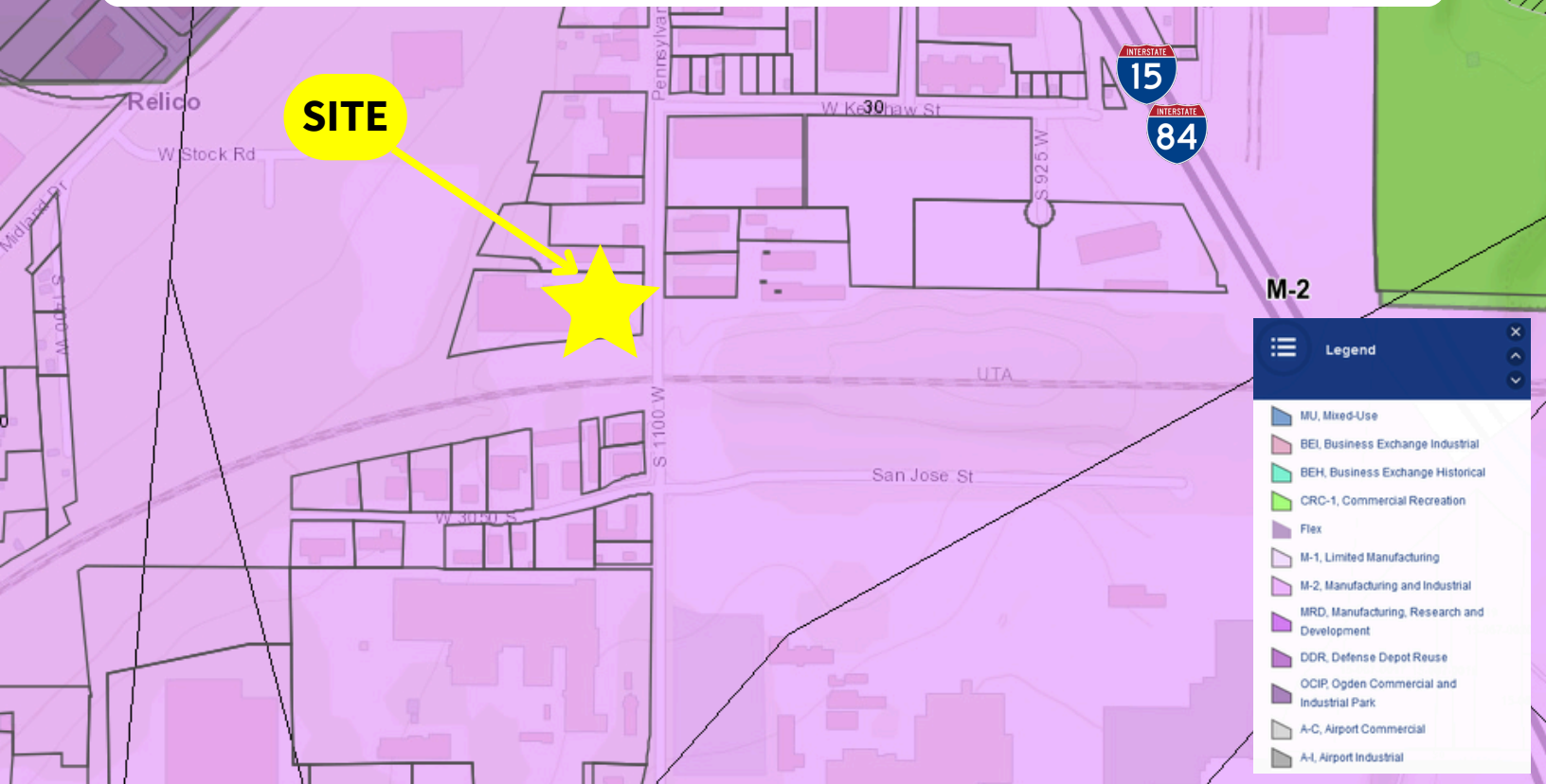
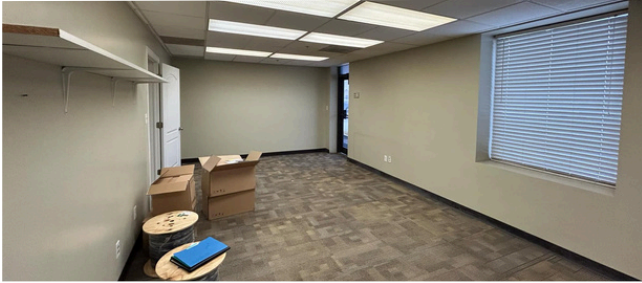


**Garrett Pierson**  
801-644-1361  
g@crestutah.com



[www.CrestUtah.com](http://www.CrestUtah.com)

978 Chamber St., Suite 3, South Ogden, Utah 84403  
Phone : 801-476-9500 | Fax: 801-476-9581



## Contact Agents



**Aaron McCrady**  
801-953-7012  
aaroncrest@gmail.com

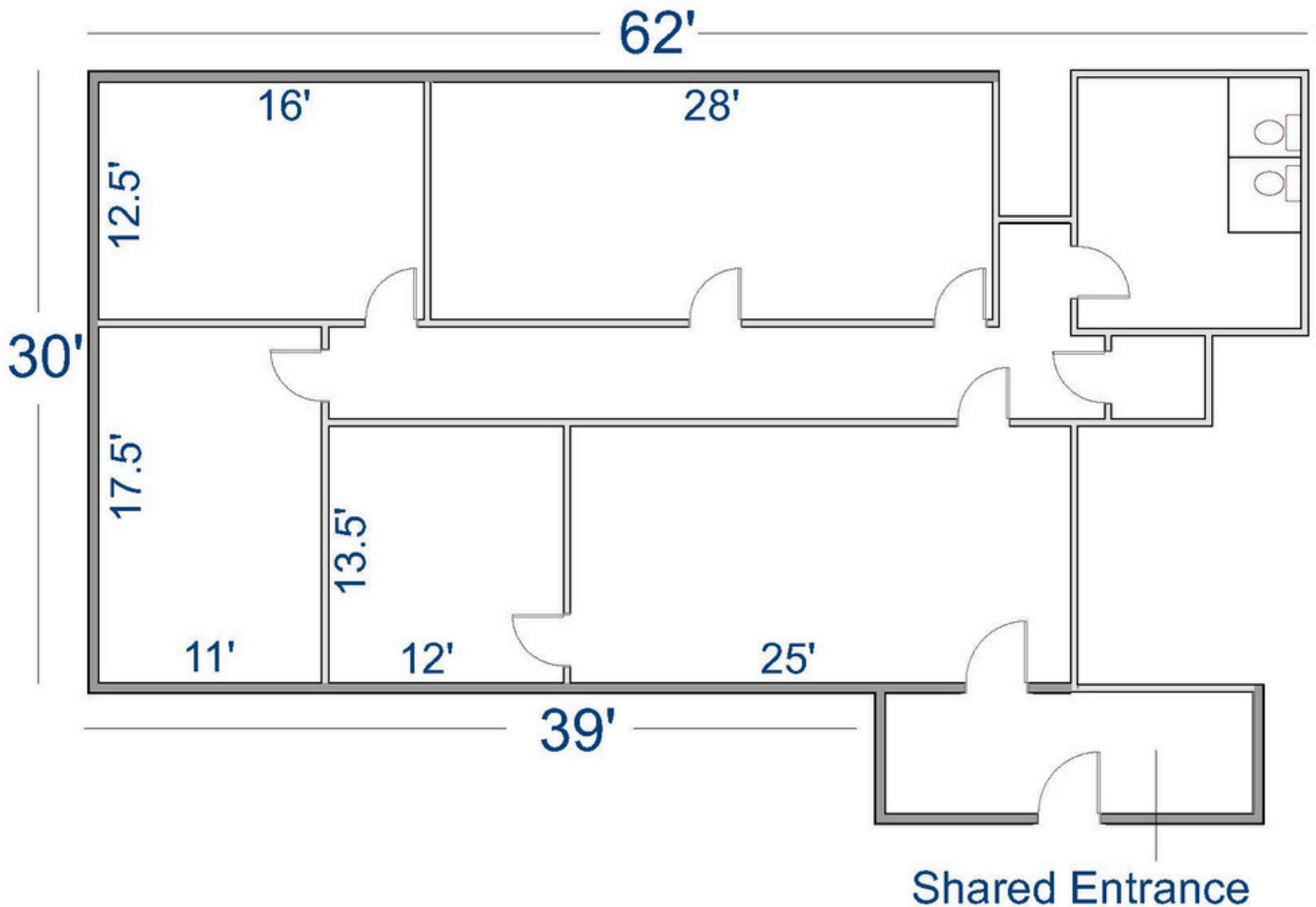


**Garrett Pierson**  
801-644-1361  
g@crestutah.com

## Floor Plan

Total Square Feet

**1,590**



### Contact Agents



**Aaron McCrady**

801-953-7012  
aaroncrest@gmail.com

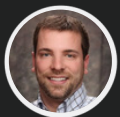


**Garrett Pierson**

801-644-1361  
g@crestutah.com



## Contact Agents



**Aaron McCrady**

801-953-7012  
aaroncrest@gmail.com



**Garrett Pierson**

801-644-1361  
g@crestutah.com



**FOR LEASE**

**2951 Pennsylvania Ave  
Ogden, UT**

**For More Information  
Please Contact:**



**Aaron McCrady**

801-953-7012  
aaroncrest@gmail.com



**Garrett Pierson**

801-644-1361  
g@crestutah.com

