

FOR SALE

±13,500 Sq. Ft.

LIZOTTE

AND ASSOCIATES REAL ESTATE INC

PRICE FURTHER REDUCED!



189/199 Pembina Road, Sherwood Park, AB

FREESTANDING CONDOMINIUM OFFICE/ WAREHOUSE WITH YARD

Property Highlights

- Owner/User/Investor Opportunity
- Two Condo opportunity can be sold separate or together
- 7,000 Sq. Ft of space available immediately
- 80/20 office/warehouse configuration
- Upgraded Fibre Optic Data Service
- Site is gated and fenced
- Proximity to Yellowhead Hwy, Anthony Henday, Broadmoor Blvd, and Baseline Road
- Ideally suited for uses such as Engineering firms, contractors, Surveyors, accountants, lawyers



780.488.0888



www.lizotterealestate.com



#1200, 10117 Jasper Avenue
Edmonton, AB T5J 1W8



No warranty or representation, expressed or implied, is made as to the accuracy of the information contained herein, and same is submitted subject to errors, omissions, change of price, rental or other conditions, withdrawal without notice, and to any specific listing condition, imposed by our principals.

FOR SALE

OFFICE WITH WAREHOUSE AND YARD

LIZOTTE
AND ASSOCIATES REAL ESTATE INC

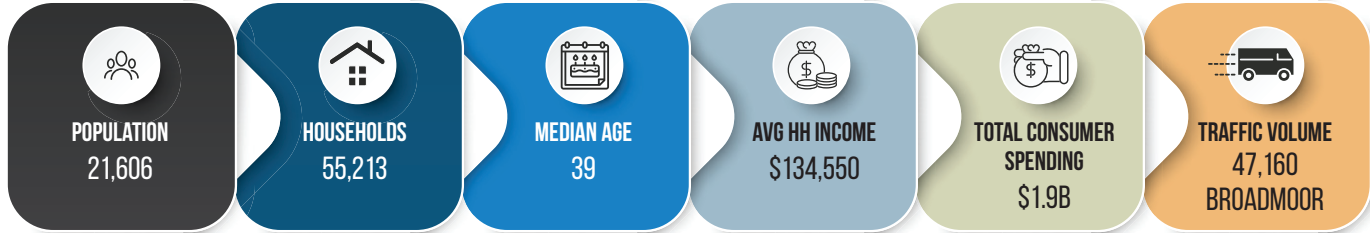


FOR SALE

OFFICE WITH WAREHOUSE AND YARD

LIZOTTE
AND ASSOCIATES REAL ESTATE INC

Demographics within 5KM



INVESTMENT INFORMATION

- No deferred maintenance
- 2 long term tenants

Contact Associates for NOI information

Derek Shybunka
Associate
Cell: 587.566.3602
Direct: 780.784.0442
derek@lizotterealestate.com

Jesse Hesse
Associate
Cell: 780.307.6841
Direct: 780.784.9586
jesse@lizotterealestate.com



780.488.0888



www.lizotterealestate.com

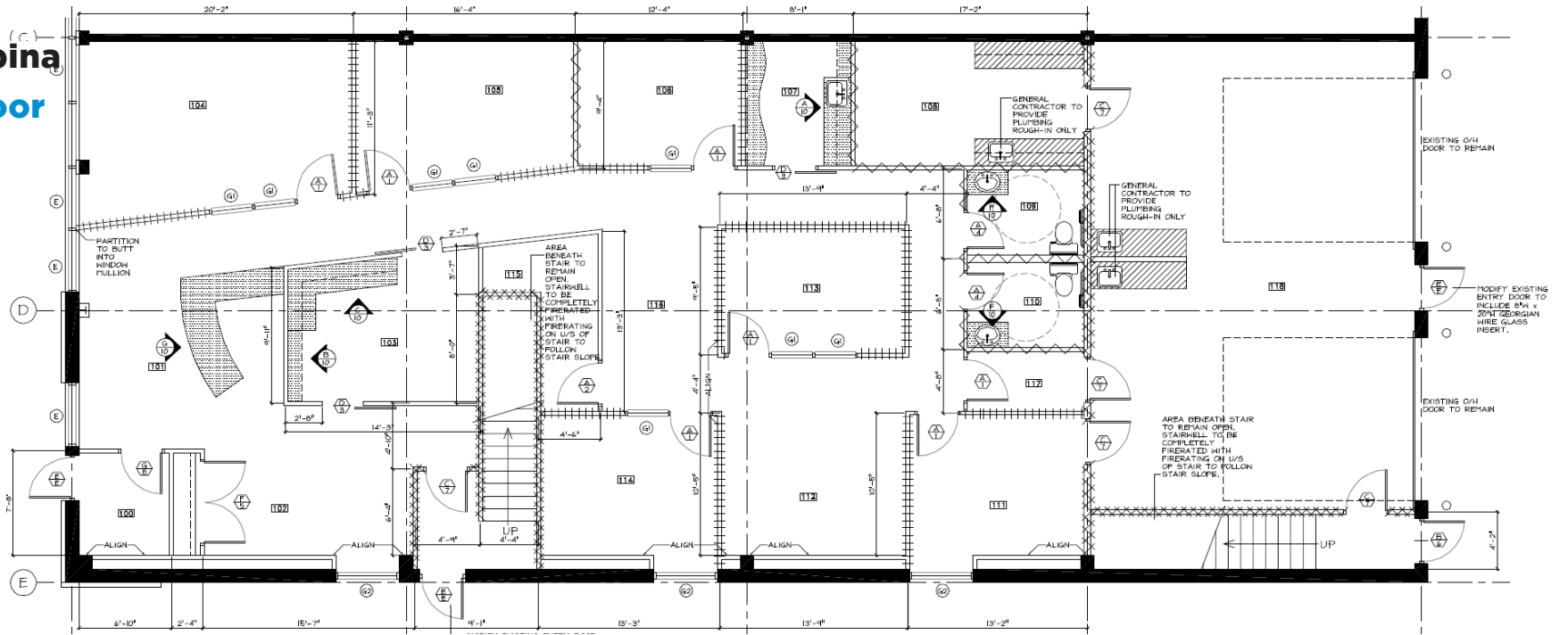


#1200, 10117 Jasper Avenue
Edmonton, AB T5J 1W8

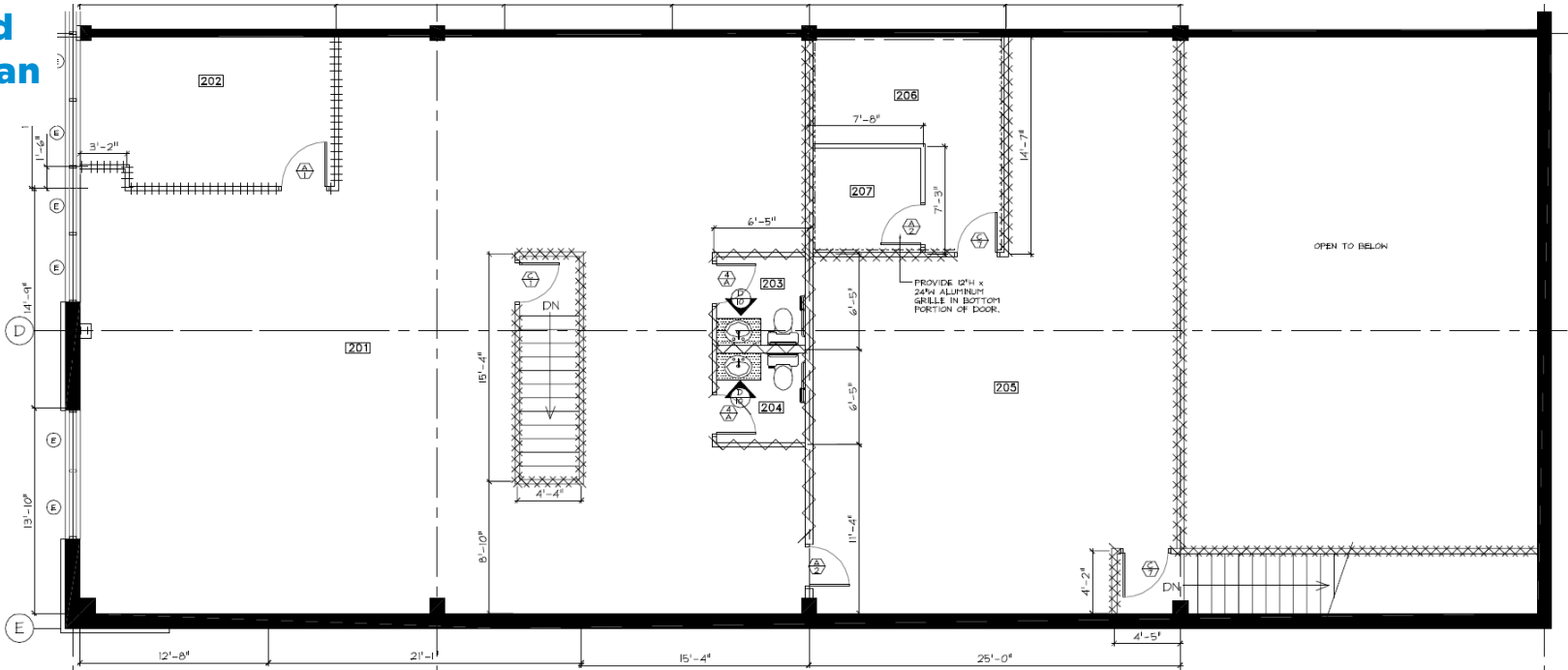


No warranty or representation, expressed or implied, is made as to the accuracy of the information contained herein, and same is submitted subject to errors, omissions, change of price, rental or other conditions, withdrawal without notice, and to any specific listing condition, imposed by our principals.

Unit
189 Pembina
Main Floor
Plan

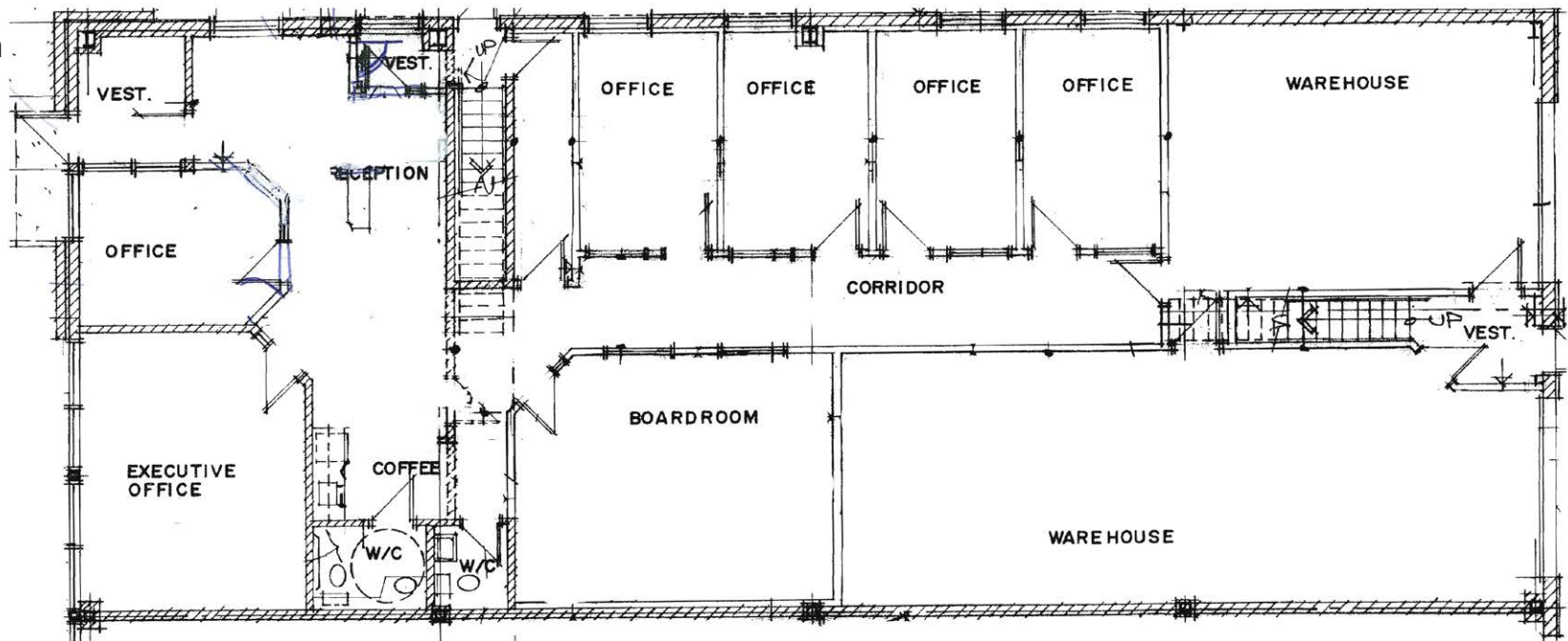


Second Floor Plan

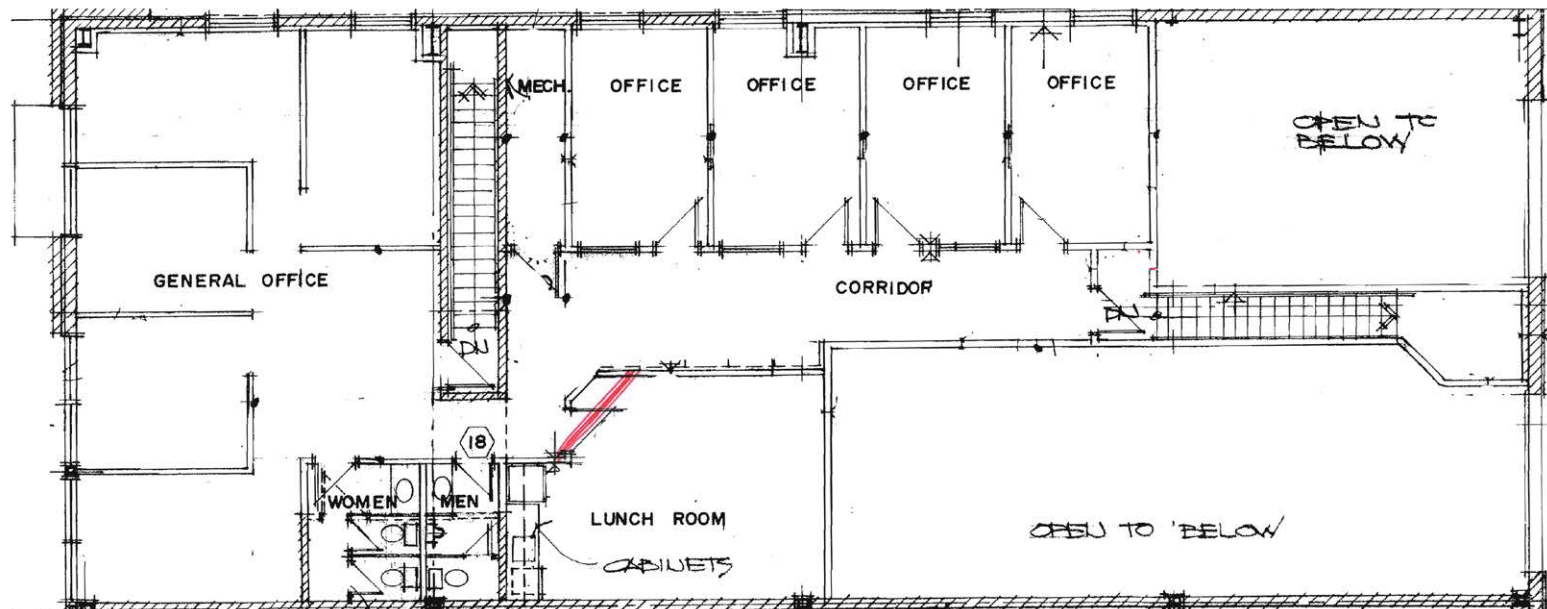


**Unit
199 Pembina**

**Main Floor
Plan**



**Second
Floor Plan**



FOR SALE

OFFICE WITH WAREHOUSE AND YARD

LIZOTTE
AND ASSOCIATES REAL ESTATE INC

Property Information

Municipal Address: 189/199 Pembina Rd, Sherwood Park, AB

Legal Address: Plan 0624341, Unit 1, 2

Building Size: 13,500 Sq. Ft. (+/-)

Lot Size: 0.90 Acre (+/-)

Zoning: Service Commercial (C5)

Parking: Paved in front and side of buildings

Power: 600 Amps, 120/208 Volts

Heating: Radiant tube in warehouse
Gas fired in office

Ceiling Height: 20' in warehouse

Loading: (4) 12'X 14' Grade

Possession: Immediate/negotiable

\$\$\$

Purchase Price: \$~~4,150,000~~ \$3,500,000.00

Contact

Derek Shybunka

Associate

Cell: 587.566.3602

Direct: 780.784.0442

derek@lizotterealestate.com

Jesse Hesse

Associate

Cell: 780.307.6841

Direct: 780.784.9586

jesse@lizotterealestate.com

