

# 1806 S KING STREET

Honolulu, Hawaii 96826

# FOR LEASE

Office Space



## PROPERTY DESCRIPTION

Rarely available office space in the three-story building on South King Street.

This building is located near Times Super Market McCully, Gyotaku Japanese Restaurant and American Savings Bank.

CAM is \$1.87 per square foot per month and includes electricity.

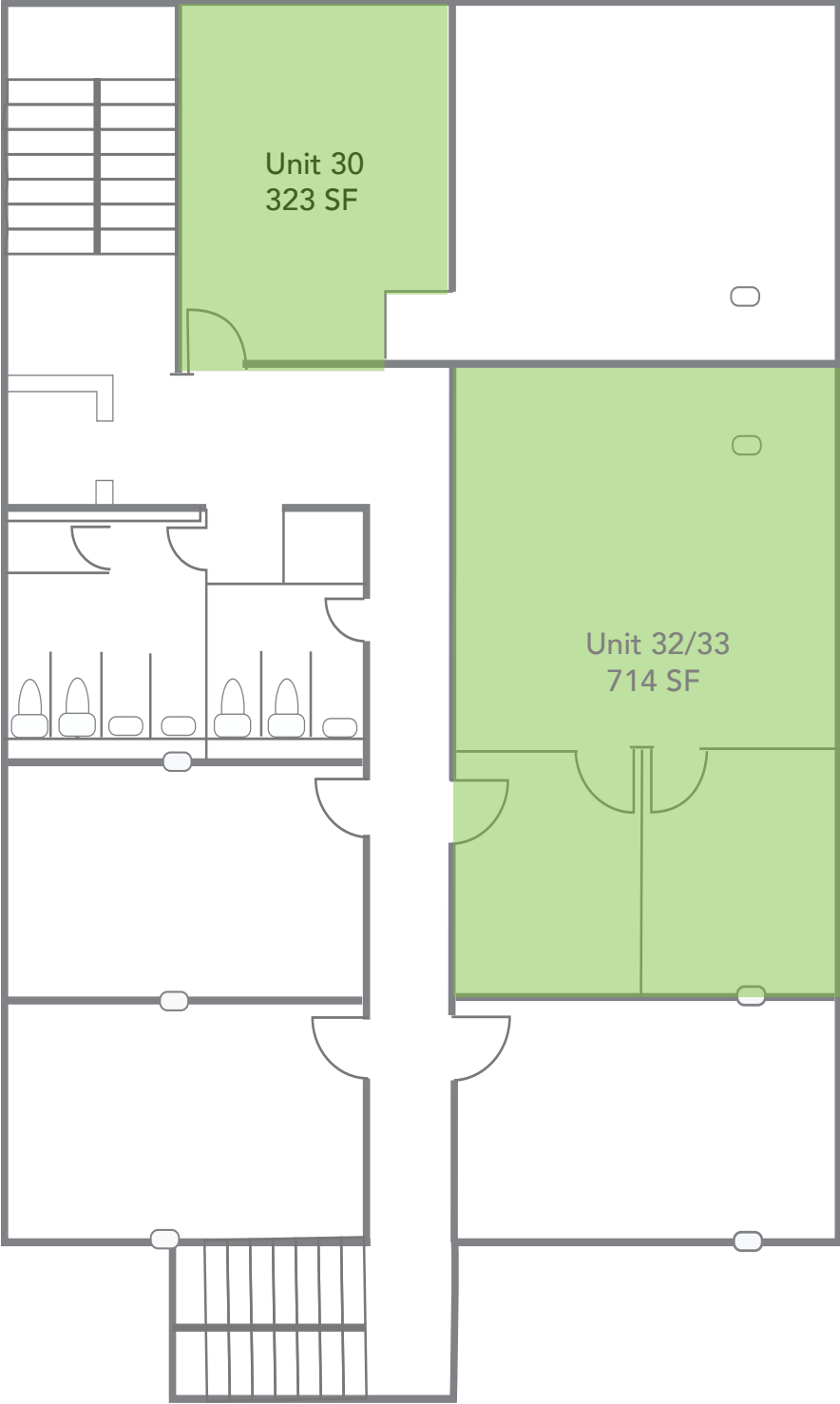
## PROPERTY SNAPSHOT

Location:	McCully
Property Type:	Office
TMK:	1-2-8-2-021 & 22
<u>Space Available:</u>	<u>Size:</u>
Unit 32/33	714 SF
Unit 30	323 SF
Rent:	\$1.65 / SF / Month
CAM:	\$1.87 / SF / Month
Zoning:	BMX-3

©2025 Sofos Realty Corporation. All information contained herein is obtained from sources deemed reliable. However, no representations or guarantees are made as to the accuracy thereof, and it is provided herein subject to errors, omissions, changes and withdrawals without notice. Offeror and/or his agent should confirm this information prior to making any offer. Buyer agrees that all negotiation shall be conducted through Sofos Realty Corporation only. No subagency is offered or intended.

 **SOFOS REALTY**  
CORPORATION  
Commercial Brokerage • Property Management

# FLOOR PLAN



### THIRD FLOOR

#### AVAILABILITY

Unit	Size
30	323 SF

### THIRD FLOOR

#### AVAILABILITY

Unit	Size
32/33	714 SF

Floor Plans are for marketing purposes only and may not accurately reflect the property.

**Nora Bland (S)**

Senior Vice President

RS-65997

(808) 522-5967

[nbland@sofosrealty.com](mailto:nbland@sofosrealty.com)