



FOR SALE



**CUSHMAN &
WAKEFIELD**

Commercial Kentucky

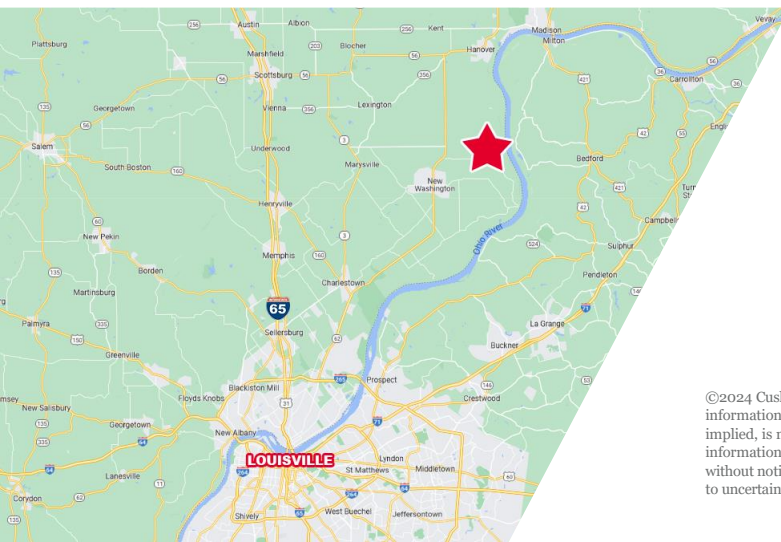
9722 BARKER DRIVE

Nabb, IN 47147

**29,936 SF /
13.3 ACRES**

PROPERTY HIGHLIGHTS

- 1,000-sf office
- Total square footage also includes an 8,000-sf 3-sided shed
- 13' – 15' ceiling height
- (1) 12' x 14' drive-in door
- (2) exterior loading dock positions
- Gas heat
- 480 volt, 3-phase power
- Compressed air lines
- Approximately 4.2 mi. east of Hwy. 62 and 20 mi. east of I-65



STEPHAN F. GRAY, SIOR

President, Senior Director
+1 502 589 5150 ext. 256
sgray@commercialkentucky.com

BLAKE SCINTA, CCIM

Senior Associate
+1 502 589 5150 ext. 230
bscinta@commercialkentucky.com

333 E. Main Street, Suite 510 | Louisville, KY 40202

+1 502 589 5150

www.CommercialKentucky.com

©2024 Cushman & Wakefield. All rights reserved. The information contained in this communication is strictly confidential. This information has been obtained from sources believed to be reliable but has not been verified. No warranty or representation, express or implied, is made as to the condition of the property (or properties) referenced herein or as to the accuracy or completeness of the information contained herein, and same is submitted subject to errors, omissions, change of price, rental or other conditions, withdrawal without notice, and to any special listing conditions imposed by the property owner(s). Any projections, opinions or estimates are subject to uncertainty and do not signify current or future property performance.

9722 BARKER DRIVE

Nabb, IN 47147

29,936 SF / 13.3 ACRES FOR SALE



PROPERTY PHOTOS



STEPHAN F. GRAY, SIOR
President, Senior Director
+1 502 589 5150 ext. 256
sgray@commercialkentucky.com

BLAKE SCINTA, CCIM
Senior Associate
+1 502 589 5150 ext. 230
bscinta@commercialkentucky.com

333 E. Main Street, Suite 510
Louisville, KY 40202
phone: +1 502 589 5150
www.CommercialKentucky.com

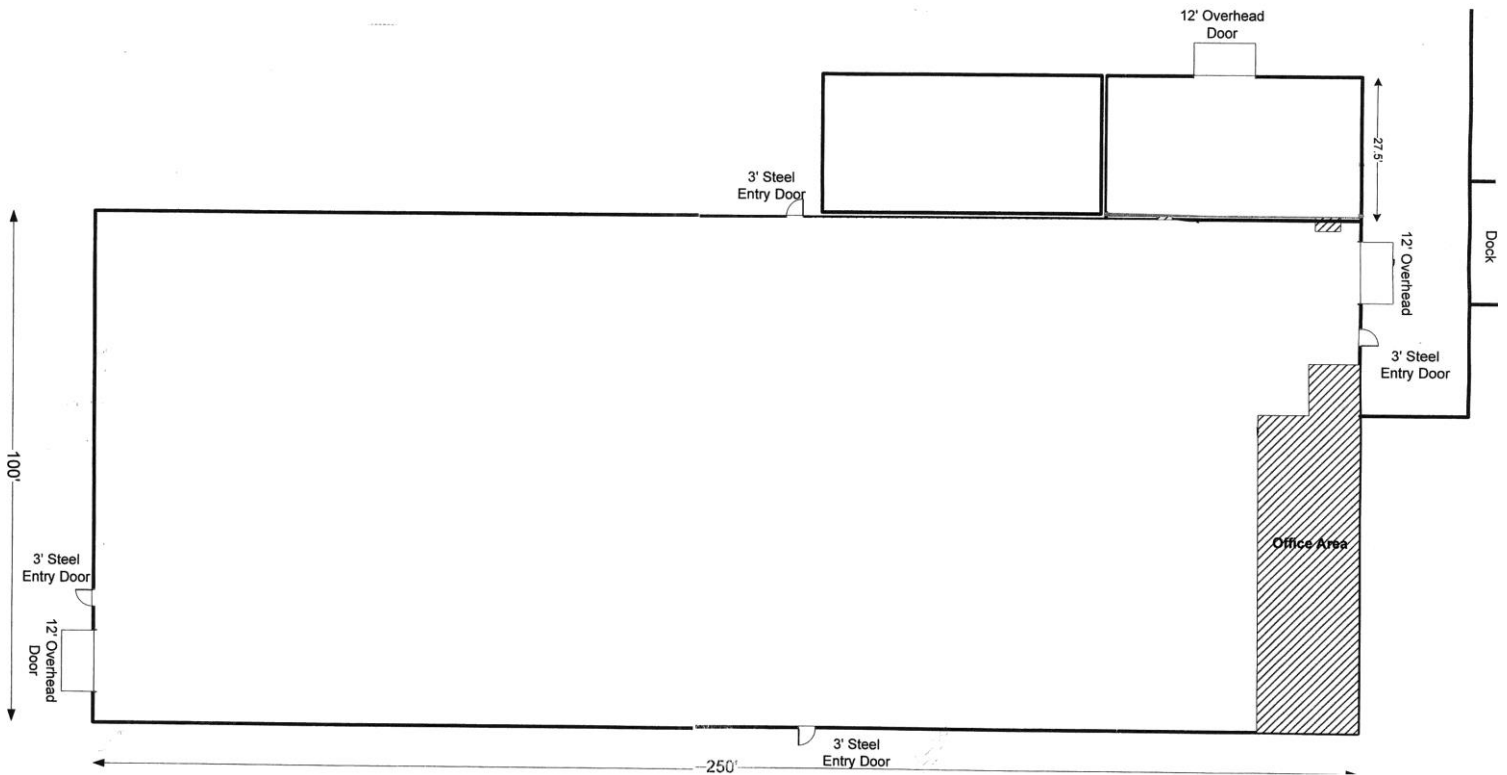
9722 BARKER DRIVE

Nabb, IN 47147

29,936 SF / 13.3 ACRES FOR SALE



FLOOR PLAN



STEPHAN F. GRAY, SIOR
President, Senior Director
+1 502 589 5150 ext. 256
sgray@commercialkentucky.com

BLAKE SCINTA, CCIM
Senior Associate
+1 502 589 5150 ext. 230
bscinta@commercialkentucky.com

333 E. Main Street, Suite 510
Louisville, KY 40202
phone: +1 502 589 5150
www.CommercialKentucky.com

9722 BARKER DRIVE

Nabb, IN 47147

29,936 SF / 13.3 ACRES FOR SALE



AERIAL/LOCATION MAP



STEPHAN F. GRAY, SIOR
President, Senior Director
+1 502 589 5150 ext. 256
sgray@commercialkentucky.com

BLAKE SCINTA, CCIM
Senior Associate
+1 502 589 5150 ext. 230
bscinta@commercialkentucky.com

333 E. Main Street, Suite 510
Louisville, KY 40202
phone: +1 502 589 5150
www.CommercialKentucky.com