



For Lease

Steve Hooker
work: 435.649.1129
cell/text: 801.509.3560

786 East Division Street
Park City, Utah 84098



Lease Rate: \$20-23.00 NNN

Property Highlights

- Great Silver Creek Business area location
- Large open floor plan with high ceilings and ample parking
- Easy freeway access to I-80 & US-40, 30 minutes or less to Salt Lake City, or Heber airports
- Close to Park City Rail Trail & City Bus Route

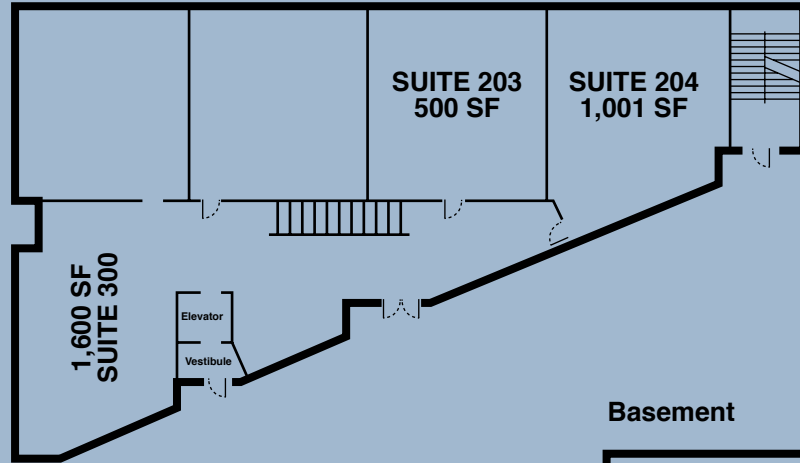


- Less than 5 minutes to Kimball Junction, 10 minutes to Old Town
- 2 large suites from 500 - 1,000 SF
- Main and lower level available, with open floor plan, dedicated break area, locker rooms, restrooms, and shower
- Voluminous feeling
- Away from the fray, easy on off freeway, bus service
- Common “meeting place” free

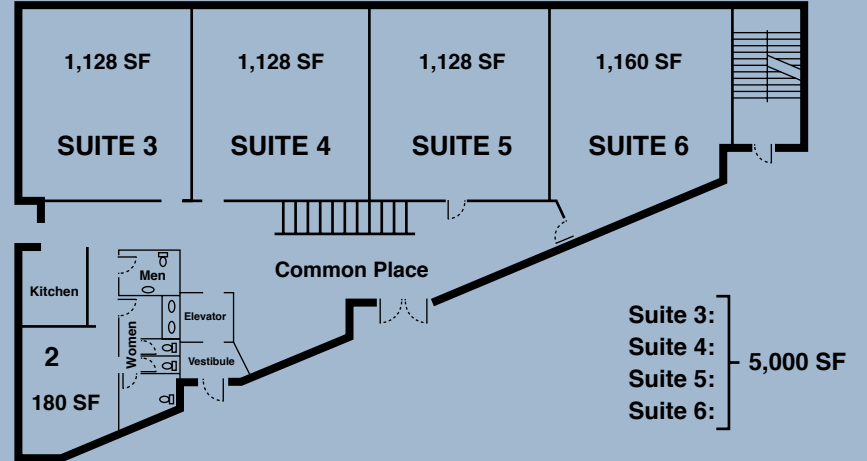


2750 Rasmussen Road, Suite 100, Park City, UT
Steve Hooker | 435.649.1129 | shooker@acme-cre.com
acme commercial real estate

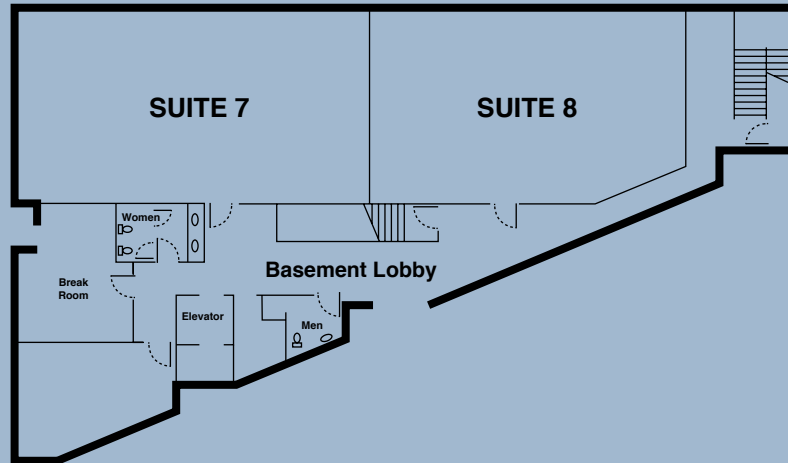
Top Floor



Main Floor



Basement





	1 mile	3 mile	5 mile
2016 Estimated Population:	1,355	7,537	22,972
2021 Projected Population:	1,482	8,279	25,270



	1 mile	3 mile	5 mile
2016 Estimated Population:	396	2,624	8,042
2021 Projected Population:	430	2,880	8,837



2016 Est. Median HH Income:	\$119,548	\$109,846	\$103,594
2016 Est. Average HH Income:	\$144,996	\$135,583	\$135,445
2016 Est. Per Capita HH Income:	\$44,928	\$48,267	\$48,113

Source: U.S. Census Bureau, Census 2010 Data. Esri forecasts for 2016 and 2021.

 786 Division St



2750 Rasmussen Road, Suite 100, Park City, UT
 Steve Hooker | 435.649.1129 | shooker@acme-cre.com
 acme commercial real estate

Acme Commercial Real Estate Copyright 2023. No warranty or representation, express or implied, is made to the accuracy or completeness of the information contained herein, and same is submitted subject to errors, omissions, change of price, rental or other conditions, withdrawal without notice, and to any special listing conditions imposed by the property owner(s). As applicable, we make no representation as to the condition of the property (or properties) in question.