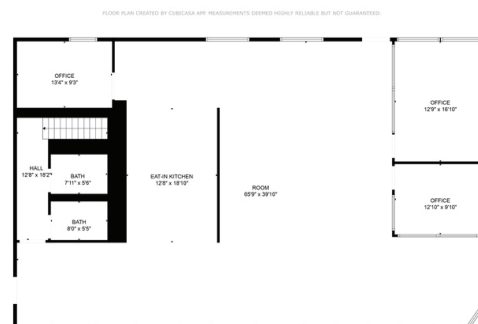
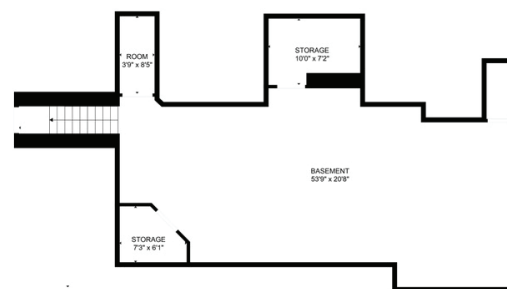


Salt Lake City, Utah 84115



Unique standalone commercial building with high visibility corner location and four off-street parking spaces. Currently built out as creative office, but would also make a great bar or restaurant. Basement has high ceilings and is unusually functional. Zoning permits a wide range of uses.



	1 Miles	3 Miles	5 Miles
<b>Population</b>			
Est. Total (2025)	17,932	160,910	352,960
Projected (2030)	19,127	171,027	369,148
<b>Households</b>			
Est. Total (2025)	8,733	75,667	150,966
Projected (2030)	9,564	83,448	163,027
<b>Household Income</b>			
Median Income (2025)	\$71,270	\$76,190	\$78,661
Avg. Income (2025)	\$91,815	\$109,200	\$115,704

Source: ESRI forecasts for 2025 and 2030.



+ Main Floor: 2,852 SF	+ \$2.00/SF CAM
+ Basement: 934 SF	+ CAM covers property taxes, insurance, HVAC maintenance
+ Total: 3,786 SF	
+ \$15.50/SF NNN	+ Tenant pays utilities, snow removal, landscape maintenance



**Paul Svendsen**  
Commercial Real Estate  
801.441.8563  
paulsvendsen@wincre.com



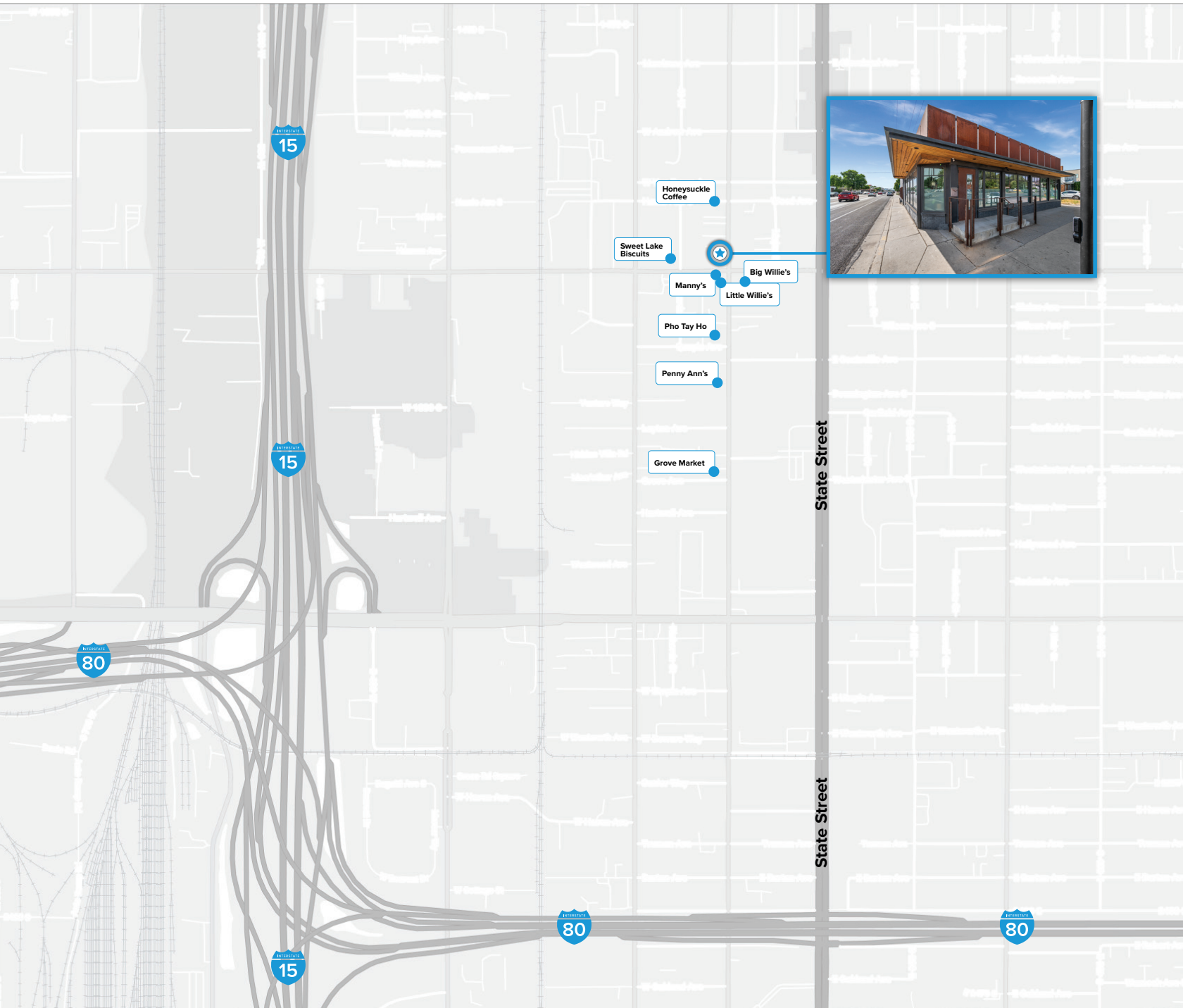
FOR LEASE // OFFICE / RETAIL

## 1680 S Main Street

Salt Lake City, Utah 84115



### Nearby Amenities



801.441.8563 // 1240 E 2100 S, Suite 600, Salt Lake City, UT 84106 // [wincre.com](http://wincre.com)

Disclaimer Windermere Commercial Real Estate Copyright 2025. No warranty or representation, express or implied, is made to the accuracy or completeness of the information contained herein, and same is submitted subject to errors, omissions, change of price, rental or other conditions, withdrawal without notice, and to any special listing conditions imposed by the property owner(s). As applicable, we make no representation as to the condition off the property (or properties) in question.