

# Corporate Ridge I

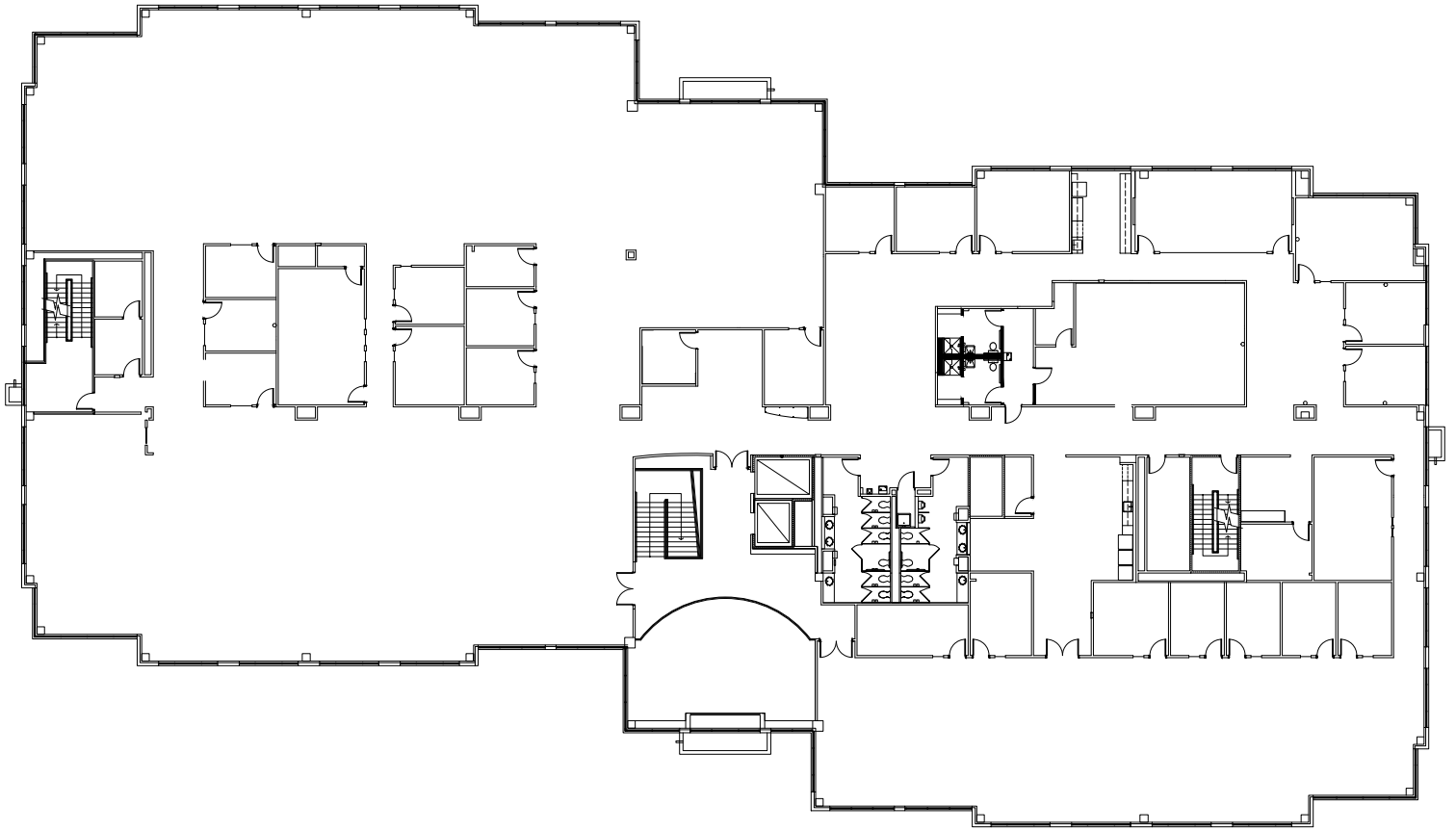
18103 W. 106th Street, Suite 200  
Olathe, KS 66061  
[www.cbre.com/kansascity](http://www.cbre.com/kansascity)

± 30,045 RSF to 60,478 Available



## Corporate Ridge I

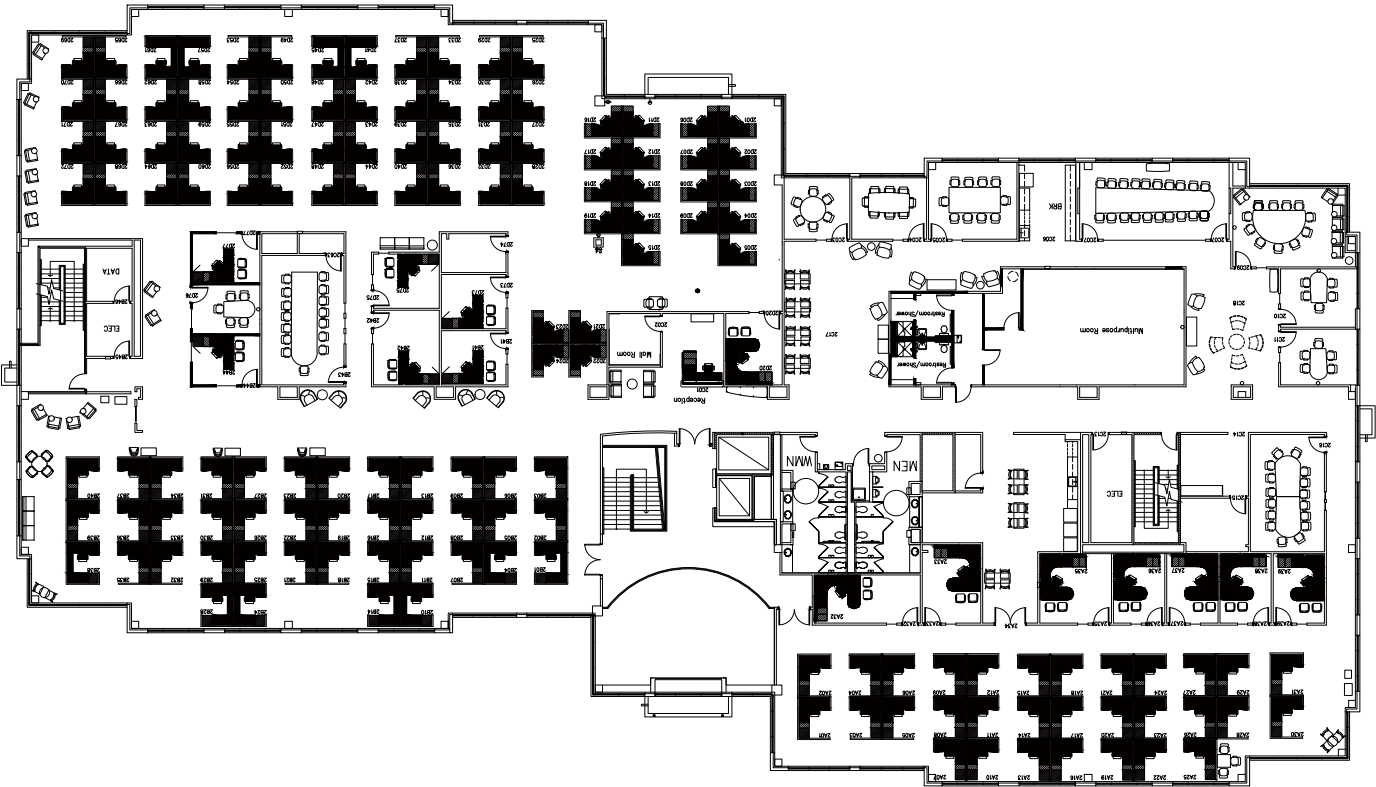
18103 W. 106th Street, Suite 200 | Olathe, KS 66061



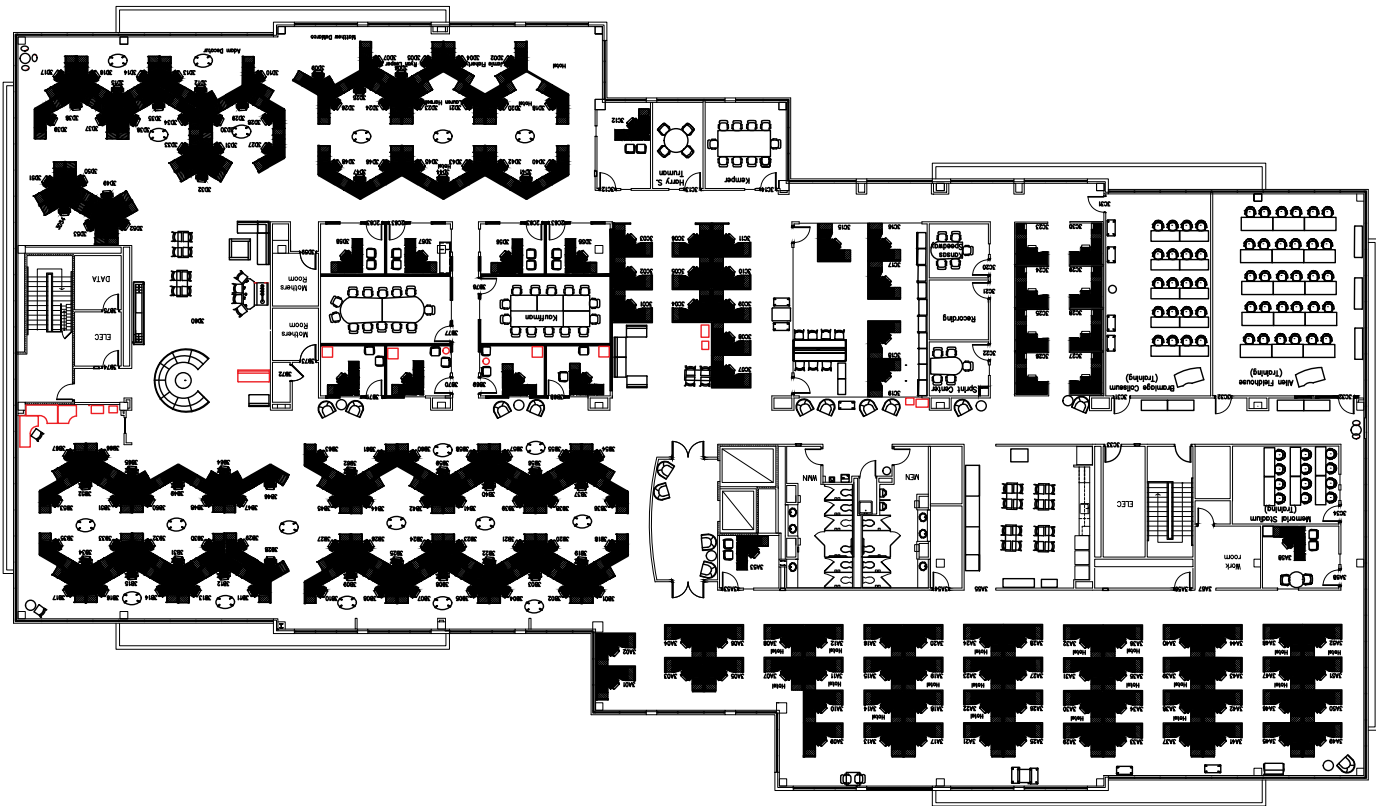
# Property Details

- + **Property Size:** ± 88,050 SF Total
- + **Space Available:** 60,478 RSF (divisible to 30,045 RSF)
- + **Sublease Expiration:** 3/31/2027
- + **Parking Ratio:** 4.7/1,000 SF
- + **Asking Rate:** \$19.00 / RSF Full-Service
- + **Features:**
  - Back-up generator included in the Sublease
  - FF&E is available/negotiable
  - Fitness room with showers

Second Floor Furniture Model



Third Floor Furniture Model



## Corporate Ridge I

18103 W. 106th Street, Suite 200 | Olathe, KS 66061

# For Sublease



## Contact Us

### Rollie Fors

Senior Vice President

+1 816 968 5806

rollie.fors@cbre.com

### Travis Gage

Vice President

+1 816 968 5805

travis.gage@cbre.com

© 2023 CBRE, Inc. All rights reserved. This information has been obtained from sources believed reliable, but has not been verified for accuracy or completeness. You should conduct a careful, independent investigation of the property and verify all information. Any reliance on this information is solely at your own risk. CBRE and the CBRE logo are service marks of CBRE, Inc. All other marks displayed on this document are the property of their respective owners, and the use of such logos does not imply any affiliation with or endorsement of CBRE. Photos herein are the property of their respective owners. Use of these images without the express written consent of the owner is prohibited.

[www.cbre.com/kansascity](http://www.cbre.com/kansascity)

# CBRE