

OFFICE SPACE FOR LEASE



MAITLAND GREEN I
601 S. Lake Destiny Drive
Maitland, FL 32751

Maitland Green I is a 4-story Class A office building with approximately 111,000 RSF and available space ranging from 3,567-28,741 RSF.

Located in the highly desirable Maitland Center Office Park, this corporate building provides efficient office suites.

[Virtual Tour](#)

[Drone Video](#)



CLASS A OFFICE SPACE

Space Available
3,567-28,741 RSF

Total Space Available
41,621 RSF



For more information, contact:
[Damien Madsen](#)
(407) 256.2844
DMadsen@harbertrealty.com

[Josh Smith, SIOR](#)
(407) 739.8602
JSmith@harbertrealty.com

Property Owned &
Operated by:



SPACE AVAILABLE

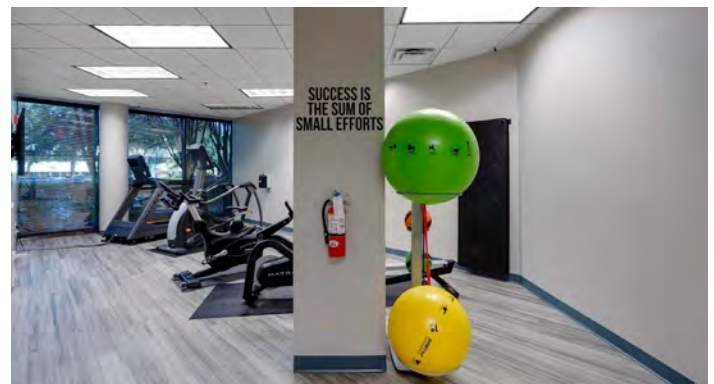
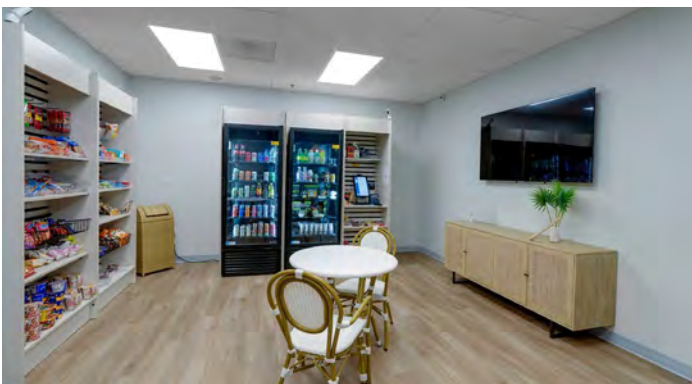
Suite	RSF
100A	7,149*
100B	6,001*
400	16,827
400A	7,505
400B	3,567
400C	5,755
4th Floor	28,741

* Suites can be combined for 13,150 RSF



BUILDING FEATURES & AMENITIES

- 111,000 RSF Class A 4-Story Building
- On-Site Institutional Property Management
- 4/1000 Parking Ratio
- Brand New Fitness Facility
- Building Grab-N-Go Cafe
- Large Centrally Located Courtyard



For more information, contact:
Damien Madsen
 (407) 256.2844
DMadsen@harbertrealty.com

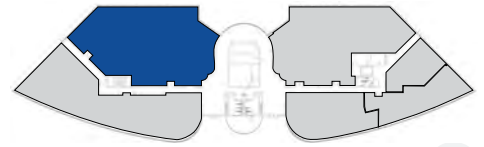
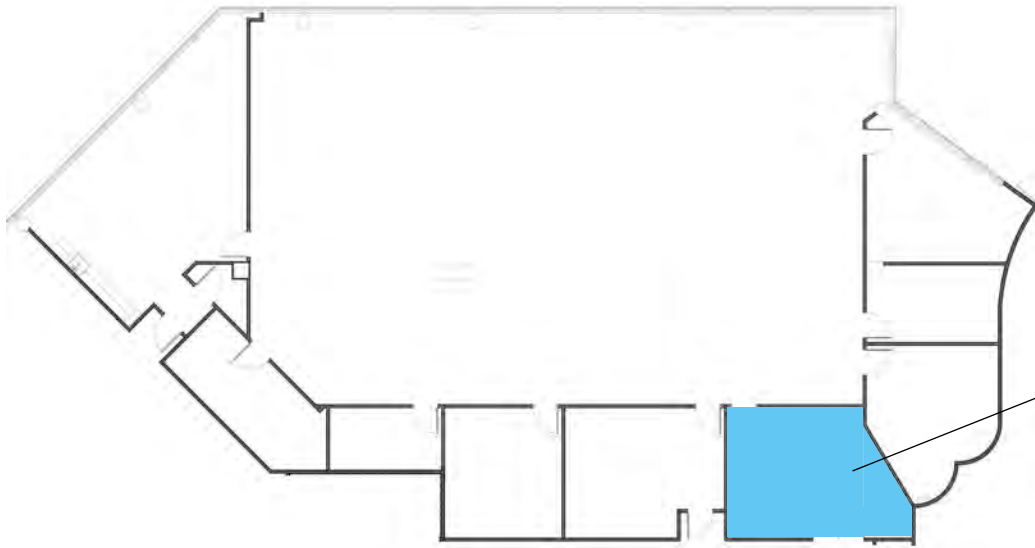
Josh Smith, SIOR
 (407) 739.8602
JSmith@harbertrealty.com

Property Owned &
 Operated by:



1st
Floor

Suite 100A: 7,149 RSF*

NORTH
➤

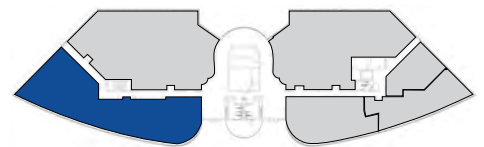
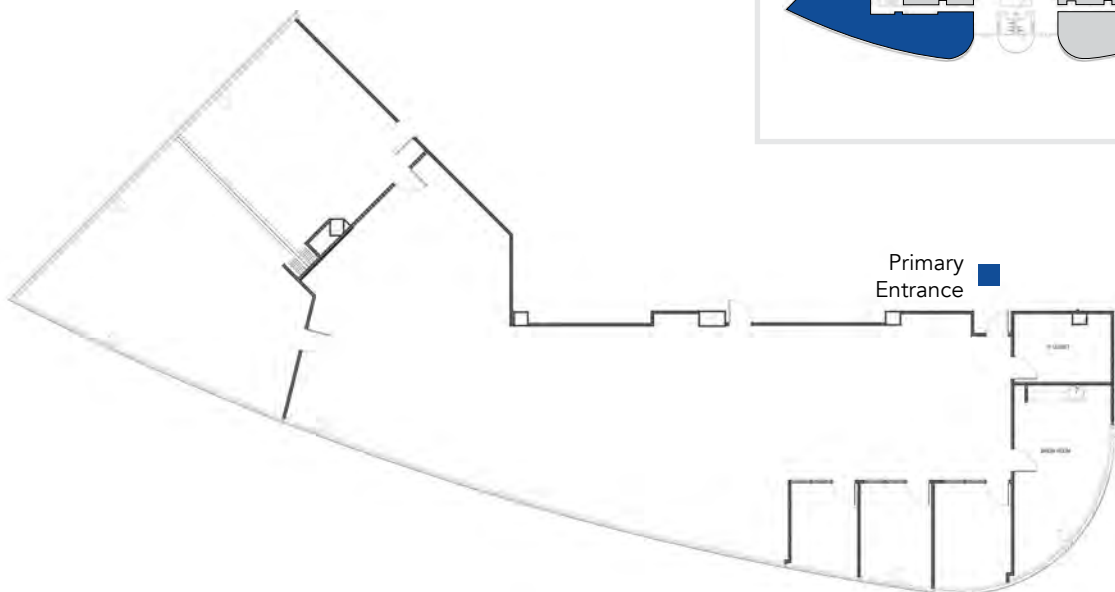
Grab-and-Go Station

Primary
Entrance

* Suites can be combined for 13,150 RSF

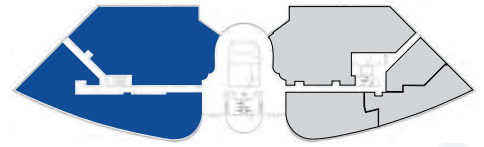
1st
Floor

Suite 100B: 6,001 RSF*

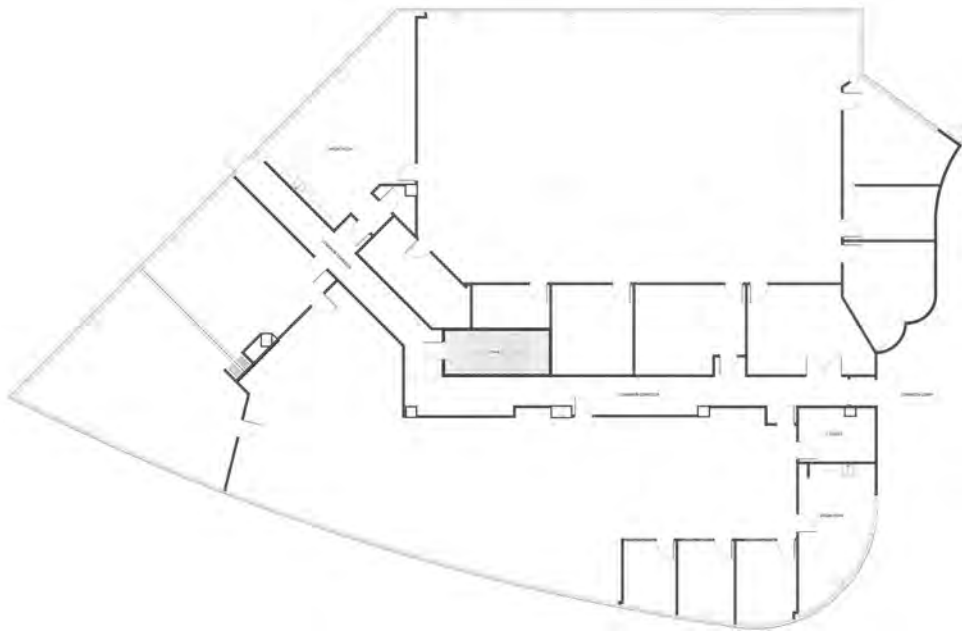
NORTH
➤Primary
Entrance

1st
Floor

Suite 100: 13,150 RSF



NORTH
➤



For more information, contact:
[Damien Madsen](#)
(407) 256.2844
DMadsen@harbertrealty.com

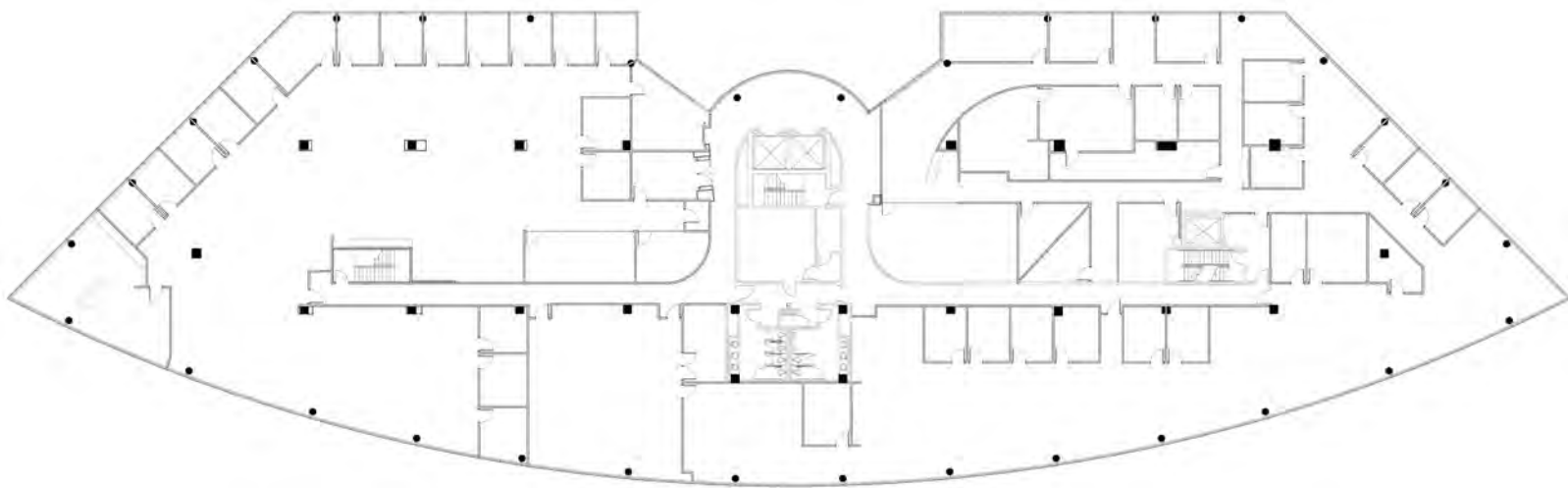
[Josh Smith, SIOR](#)
(407) 739.8602
JSmith@harbertrealty.com

Property Owned &
Operated by:



Maitland Green I

Fourth Floor: 28,741 RSF



For more information, contact:
Damien Madsen
(407) 256.2844
DMadsen@harbertrealty.com

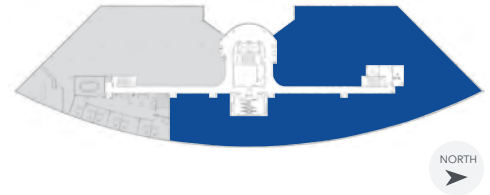
Josh Smith, SIOR
(407) 739.8602
JSmith@harbertrealty.com

Property Owned &
Operated by:

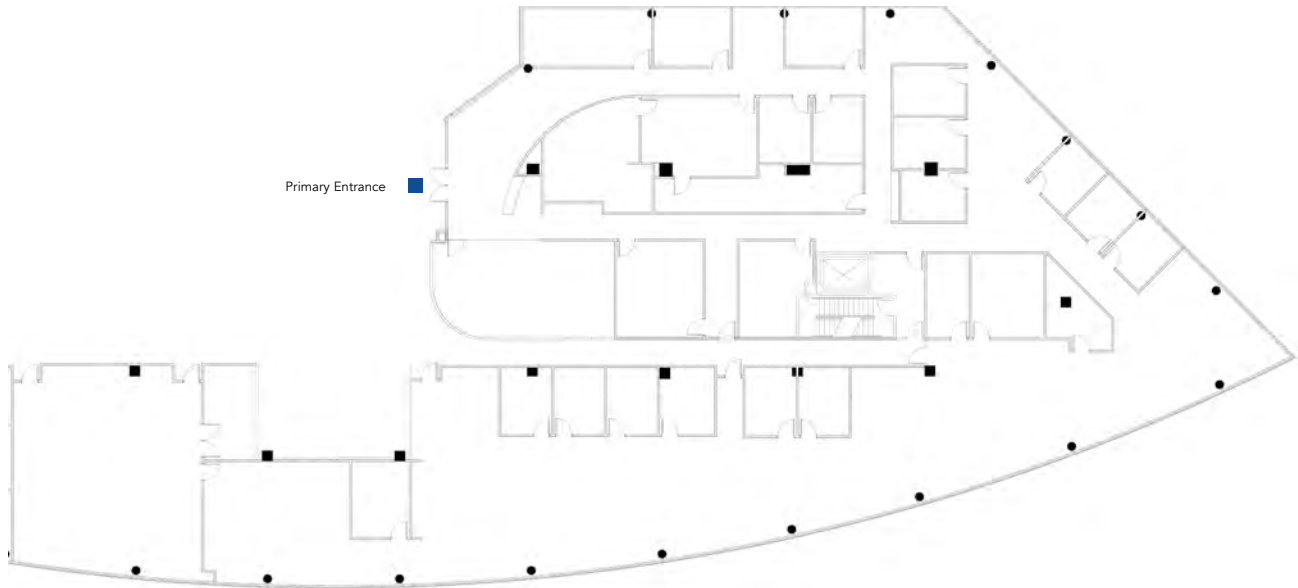


4th
Floor

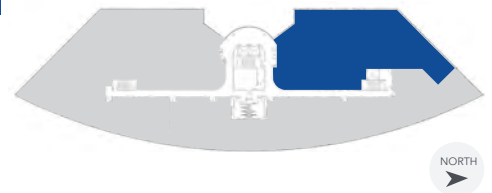
Suite 400: 16,827 RSF



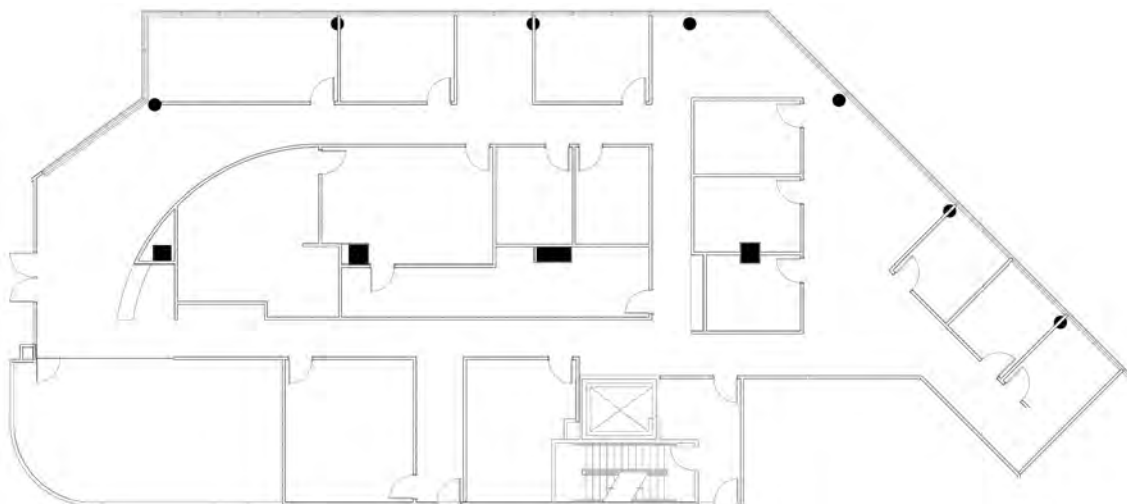
Primary Entrance

4th
Floor

Suite 400A: 7,505 RSF



Primary Entrance



For more information, contact:
[Damien Madsen](#)
(407) 256.2844
DMadsen@harbertrealty.com

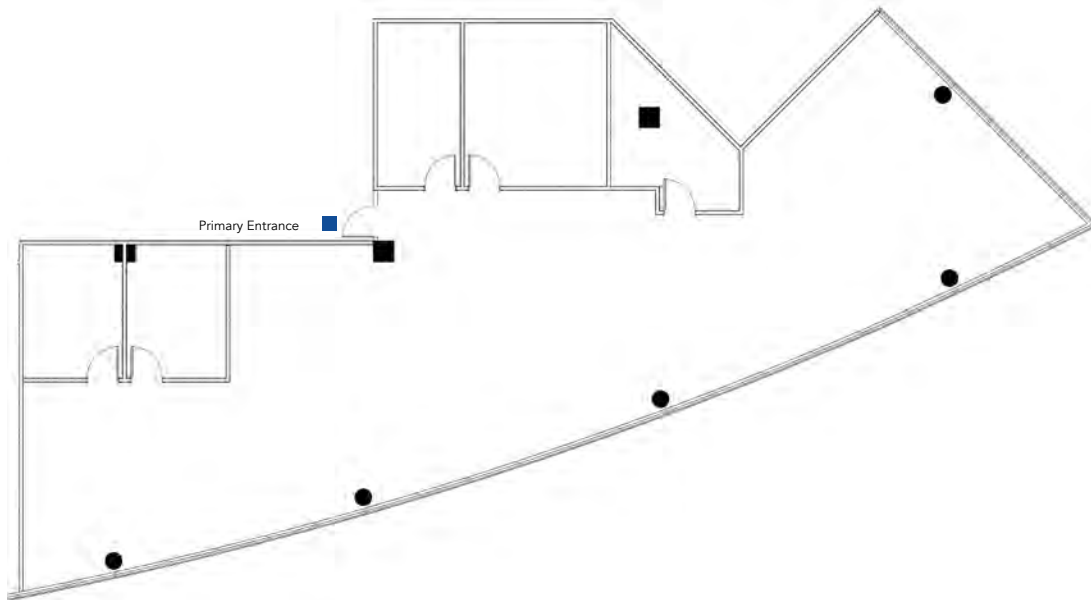
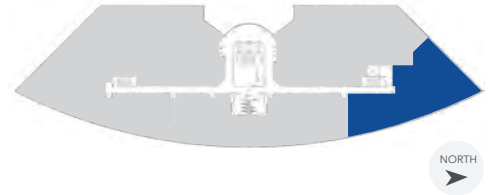
[Josh Smith, SIOR](#)
(407) 739.8602
JSmith@harbertrealty.com

Property Owned &
Operated by:

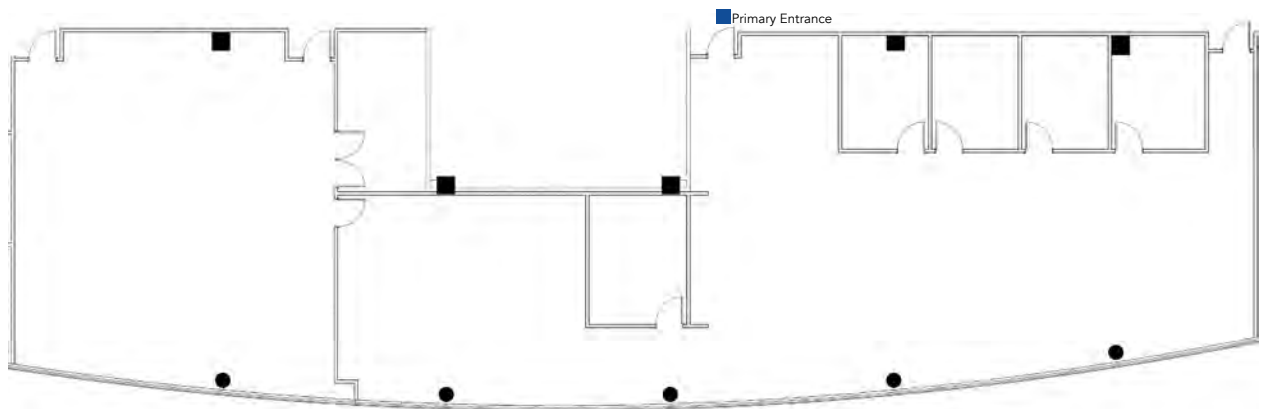
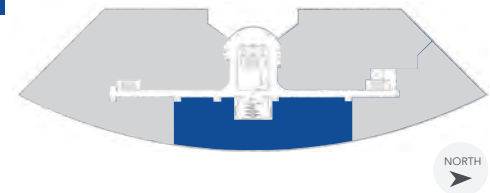


4th
Floor

Suite 400B: 3,567 RSF

4th
Floor

Suite 400C: 5,755 RSF



For more information, contact:
[Damien Madsen](#)
(407) 256.2844
DMadsen@harbertrealty.com

[Josh Smith, SIOR](#)
(407) 739.8602
JSmith@harbertrealty.com

Property Owned &
Operated by:



4th
Floor

Suite 400: 16,827 RSF*



For more information, contact:
Damien Madsen
(407) 256.2844
DMadsen@harbertrealty.com

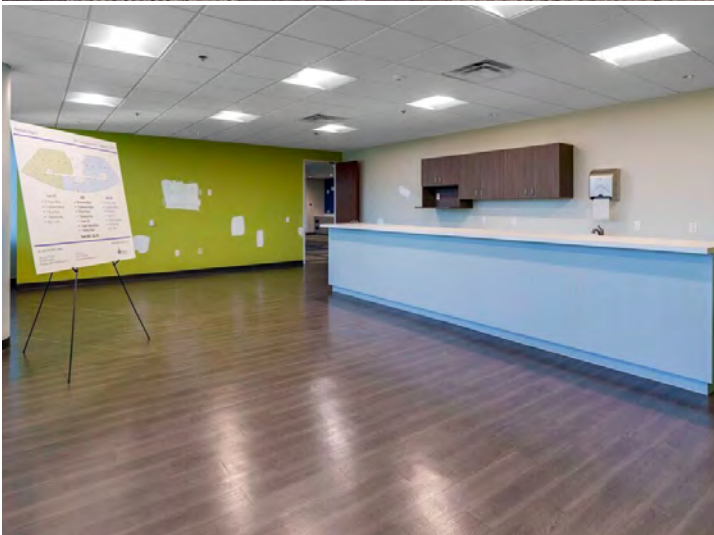
Josh Smith, SIOR
(407) 739.8602
JSmith@harbertrealty.com

Property Owned &
Operated by:



4th
Floor

Suite 400: 16,827 RSF*

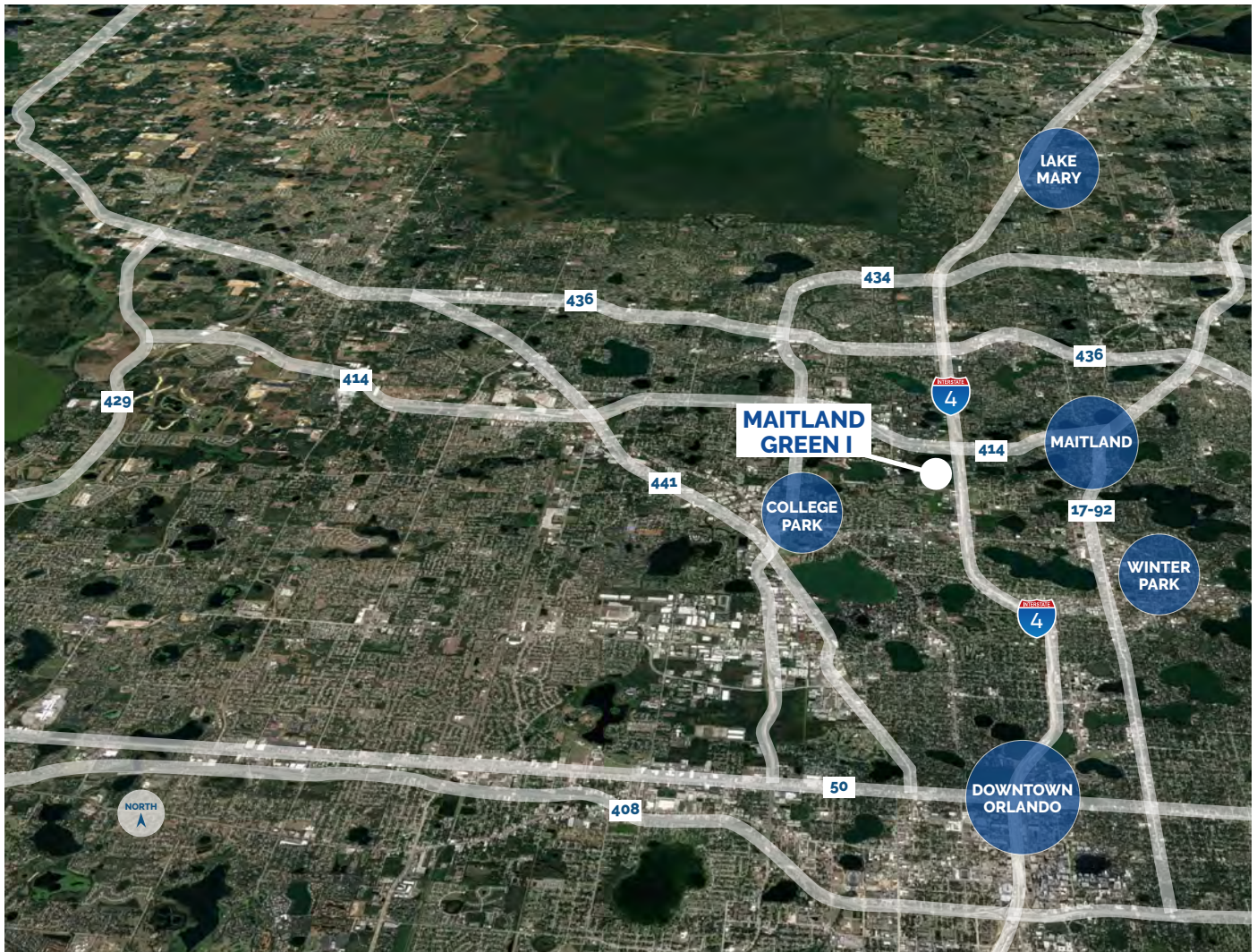


For more information, contact:
[Damien Madsen](#)
(407) 256.2844
DMadsen@harbertrealty.com

[Josh Smith, SIOR](#)
(407) 739.8602
JSmith@harbertrealty.com

Property Owned &
Operated by:





LOCATION HIGHLIGHTS

- Well-positioned within Maitland Center Office Park, one of Orlando's largest office submarkets
- Conveniently less than a half mile from I-4 & providing easy access to Downtown Orlando
- Close to business hotels, restaurants, retail and the RDV Sportsplex
- Ideally located in Central Florida's top executive housing market & the following established neighborhoods
 - Maitland: 3-Miles
 - Winter Park: 5-Miles
 - College Park: 7-Miles
 - Downtown: 8-Miles
 - Lake Mary: 12-Miles

For more information, contact:
Damien Madsen
 (407) 256.2844
DMadsen@harbertrealty.com

Josh Smith, SIOR
 (407) 739.8602
JSmith@harbertrealty.com

Property Owned &
 Operated by:

