

Welcome to *Selah*

Stop. Pause. Listen.



PRESENTED AND POWERED BY:

Selah
Stop. Pause. Listen.



The Property Center

Our property management services are customizable for your needs and preferences, so we can take on as many or as few duties as you want to hand over. We are adept at handling all the details, whether you rent to a few families each year or a constant stream of vacationers. Our flexibility ensures everyone's expectations are met.

While our clients may own different kinds of properties, there are a few things they all need from their property management team, such as market knowledge, simple processes, experience dealing with tenants, and consistent responsiveness. You get all of this and more with The Property Center.



TABLE OF CONTENTS

What is Selah?	3-4
Community Features	5-8
Liveworks	9-14
Townhomes	15-16
Design Palettes	17-28
Upcoming Neighborhoods	29-30



UPDATED 1/18/23

THE CURRENT DISTRICTS AND THEIR PLANNED AMENITIES OF SELAH

Selah
Stop. Pause. Listen.

This version of Selah contained herein may not be the official version with the exception of lot placements. This visual map of the comprehensive vision of Selah is conceptual in nature and some details may change over the course of development without notice. Therefore, Adkins & Adkins Land Development, LLC does not guarantee the accuracy of the information contained herein.

WHAT IS SELAH?

Selah is a New Urbanism community located just 10 minutes south of historic Norman, OK

The Adkins family, owners of Adkins & Adkins Land Development, envisioned a unique approach to land use that honors its natural topography. A harmonious balance between the rural and the urban, Selah is a haven of greenery, preserving over 50% of its 540 acres as untouched wilderness. This stands in stark contrast to conventional developments, which often allocate only 15% of their space as open land.



The vision for Selah is one of a sustainable community that enriches the lives of all who call it home. This vision is carried forward in the design of the community, ensuring a walkable environment that fosters connection and a sense of belonging. The path towards this vision is a gradual one, spanning generations, as Selah adapts to the changing tides of the future while retaining its core values and direction.

With sustainability at the heart of the project, the first phase of development began in late 2020. The community already boasts Pryor's Pizza Kitchen, and the Offices at Selah, the SIP Coffee and Wine Bar, and more. Estate Home lots within the Entry District are now available to secure as well as Sweetwater Village, East Ridge and Vineyard Estates, and the Parkview Series Tower Homes.

FEATURES

Selah boasts an assortment of restaurants and businesses for you to enjoy, such as Pryor's Pizza Kitchen, Sip at Selah, and The Reserve.

Exciting developments such as a sports park, golf course, community center, private school, wedding venue, working farm with farm-to-table dining, and a grocery store are part of the developers plans - offering residents and visitors even more to enjoy!





Originally located in Downtown Norman, Pryor's Pizza Kitchen is the premiere eatery in Selah! With handmade pizza cooked in a one-of-a-kind coal-fired oven, unique handcrafted cocktails, an incredible outdoor area filled with a playground, cornhole, ping pong tables, two pickleball courts, and a stage for live music. PPK is one of the most all-inclusive restaurants in the region!



The bright, sleek, Art Deco aesthetic of Sip attracts conversationalists, gal pals, and caffeine aficionados alike. Early risers will enjoy freshly brewed cups from local roaster, Eôté Coffee Company, as well as high-end teas from Tea Forte. With brunch served Thursday through Sunday, and small bites available throughout the week, Sip is sure to become a part of your daily routine!

RESIDENCE

Single-use developments don't provide the diversity or amenities homebuyers seek and often fail to create a sense of community. Mixing a variety of residential, office, medical, retail, restaurants and entertainment together creates a diverse neighborhood where people like you actually want to live, work, play and stay. Mixed-use communities offer an inviting streetscape and places for neighbors to walk and gather.

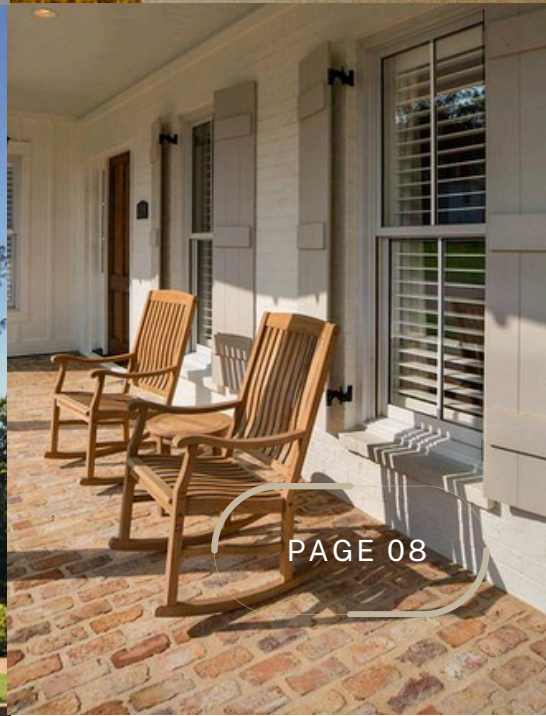


Livework and Townhome concept

The diversified residential project of Selah is set to include:

- Apartments
- Townhomes
- Condos
- Single-family homes
- Duplexes
- Fourplexes

And other residencies that welcome people of all ages, income levels, cultures and races with a broad range of opportunities.



LIVWORKS

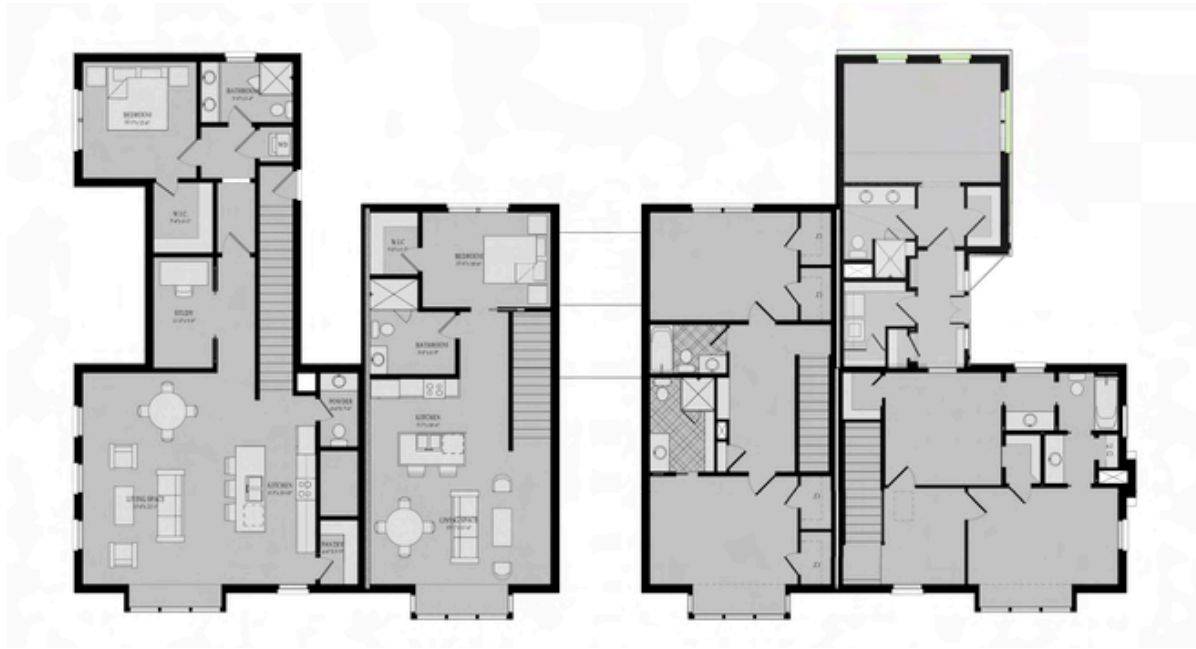


Imagine a space where home and workplace coexist seamlessly, fostering creativity and convenience. Our Livework units are designed with the principles of New Urbanism, offering a walkable environment with mixed-use diversity and sustainable features.

These units are a unique opportunity for people that value a harmonious blend of lifestyle and business. Nestled within the vibrant community of Selah, these Livework spaces redefine the conventional work-life balance.

Enjoy the convenience of living above your new favorite ice cream parlor! Or having one of the shortest commutes ever, just walking downstairs to your company's retail space!

Embrace the future of living and working in a community that emphasizes connection, green spaces, and a high quality of life. Secure your place in a community that adapts to the changing tides of the future while retaining its core values and direction.



Second Floor Plan
Selah Livework Units



First Floor Plan
Selah Livework Units

AVAILABLE FOR PURCHASE OR RENT!

LIVEWORK 20' RESIDENTIAL
(TOP UNIT)

\$268,275

OR

\$2,205 / month

735 SQFT

LIVEWORK 20' COMMERCIAL
(BOTTOM UNIT)

\$286,160

OR

\$2,482.67 / month

784 SQFT

OR MOVE INTO BOTH!

\$554,435

\$4,687.67 / month

1,519 SQFT

**FEATURING UNITS RANGING FROM 735 TO 1,368 SQFT,
THESE LIVEWORKS ARE READY TO ACCOMODATE ANY RESIDENT OR BUSINESS OWNER!**

**LIVEWORK 30' RESIDENTIAL
(TOP UNIT)**

\$467,565

OR

\$3,843 / month

1,281 SQFT

**LIVEWORK 30' COMMERCIAL
(BOTTOM UNIT)**

\$499,320

OR

\$4,332 / month

1,368 SQFT

OR MOVE INTO BOTH!

\$966,885

\$8,175 / month

2,649 SQFT

FULL LIVEWORK BUILDINGS ARE ALSO AVAILABLE!

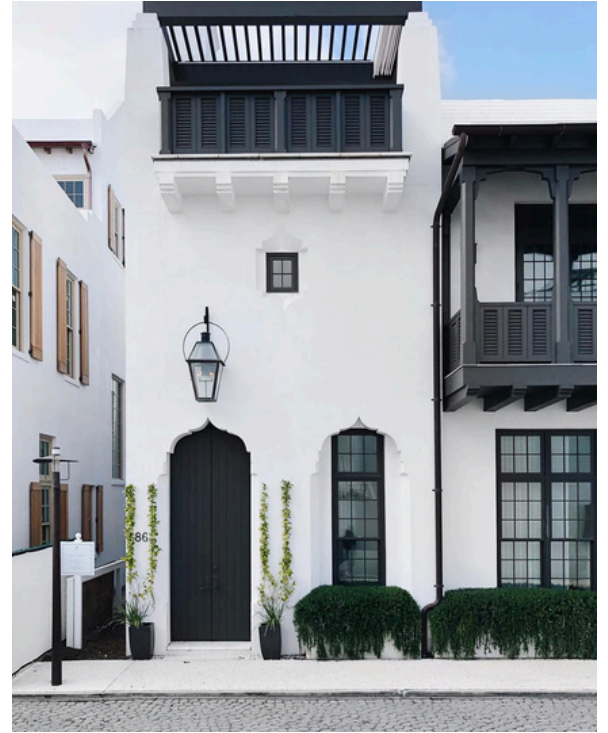
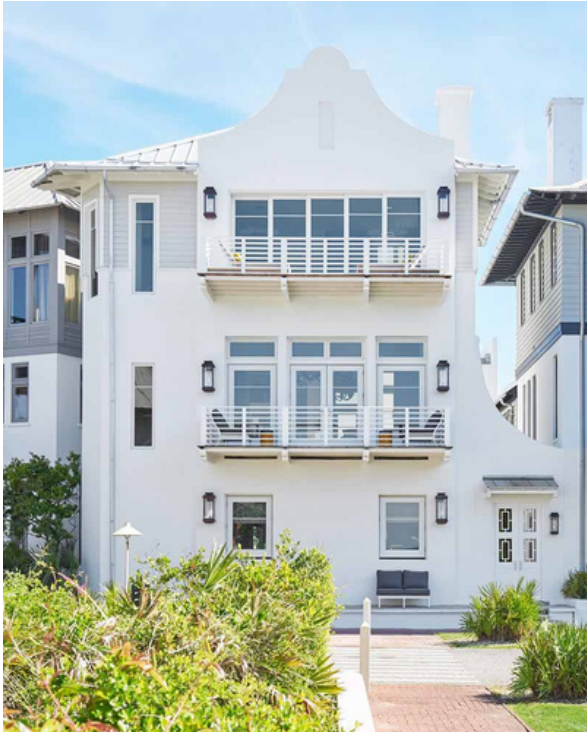
2 RESIDENTIAL AND
2 RETAIL UNITS

\$1,521,320

OR

\$12,862.67 / month

4,168 SQFT



Selah Style Concepts

TOWNHOMES



Selah's Townhomes offer an exclusive opportunity for those seeking a place to call home in a vibrant community designed with your lifestyle in mind. With a distinctive two-story layout, these residences provide flexibility for whatever your living needs are.

Imagine immersing yourself in the essence of New Urbanism, where walkable streets and inviting community spaces enhance the charm of these carefully crafted units.

Experience the perfect blend of modern living tailored for personal enjoyment. Selah's Townhomes go beyond just being an investment; they embody a welcoming community spirit and the promise of future growth. Picture yourself in a place where a strong sense of community thrives, making it not just a residence but a true home.

AVAILABLE FOR PURCHASE OR RENT!

TOWNHOME 20'

\$515,200.00

OR

\$4,416 / month

1,472 SQFT

TOWNHOME 30'

\$654,500

OR

\$5,610 / month

1,870 SQFT

OR MOVE INTO BOTH!

\$1,169,700

\$10,026 / month

3,342 SQFT



DESIGN PALETTES

Townhomes and Liveworks will have five distinctive themes for you to fall in love with. Each palette is crafted to reflect a unique lifestyle, allowing you to choose the ambiance that resonates with your individual taste.

Ranging from minimalist luxury to bohemian oasis, these design styles are sure to elevate your living experience at Selah.

The
WHITE WORKROOM

The
CAPE CODDER

The
MILKY MAISON

The
BOHO BUNGALOW

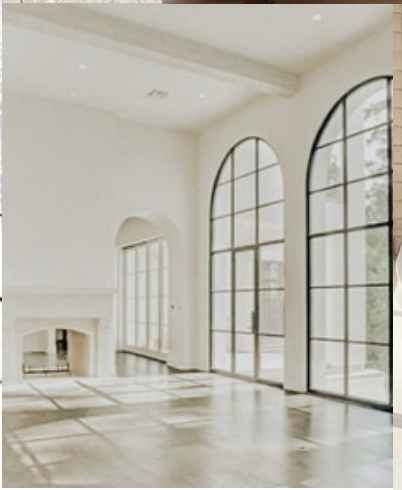
The
MID-MOD PAD





The
WHITE WORKROOM

MONOCHROMATIC.MODERN.MINIMALIST.





The

CAPE CODDER

CAPE COD BUT MAKE IT GLAM

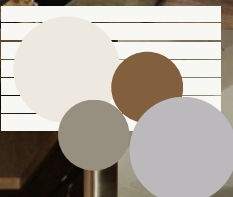
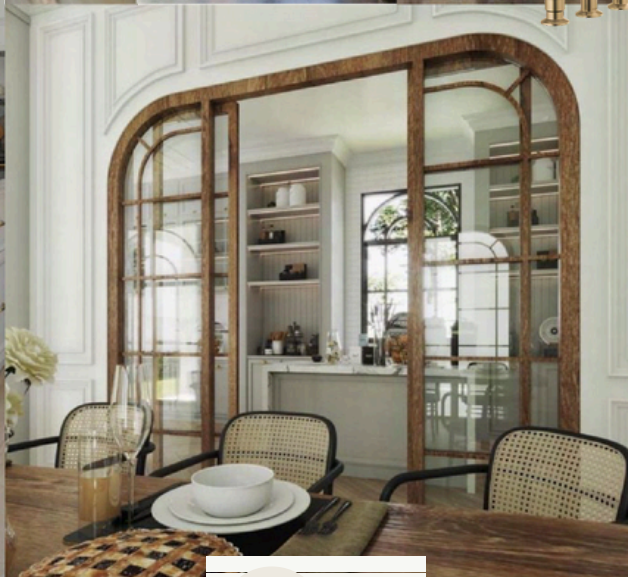






The
MILKY MAISON

NOM FÉMININ
L'ÂTIMENT D'HABITATION (IMMEUBLE, LOGEMENT, RÉSIDENCE); SPÉCIALEMENT
ÂTIMENT CONÇU POUR UN SEUL OU UN PETIT NOMBRE DE FOYERS (PAVILLON, VILLA).
LA FAÇADE, LES MURS, LE TOIT D'UNE MAISON.





The
BOHO BUNGALOW

FOR SOPHISTICATED FREE-SPIRIT
FOR SOPHISTICATED FREE-SPIRIT



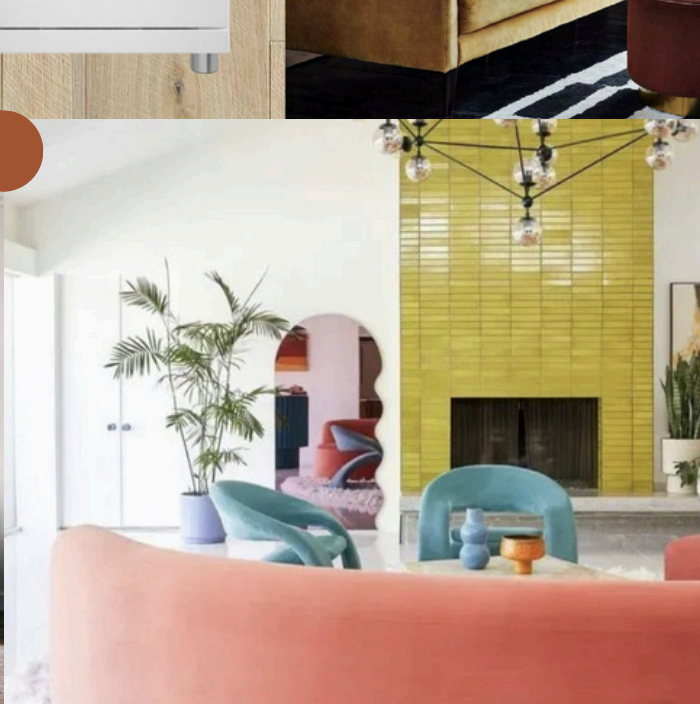
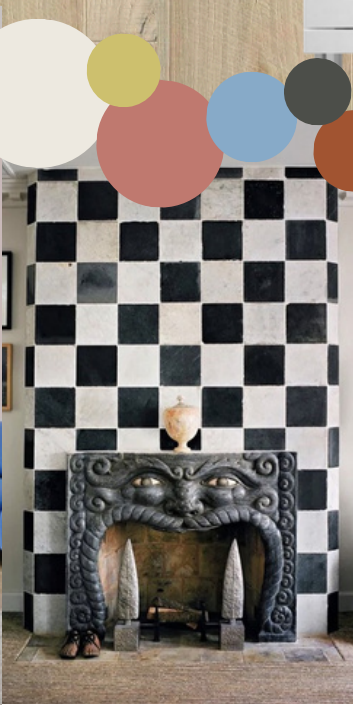


The

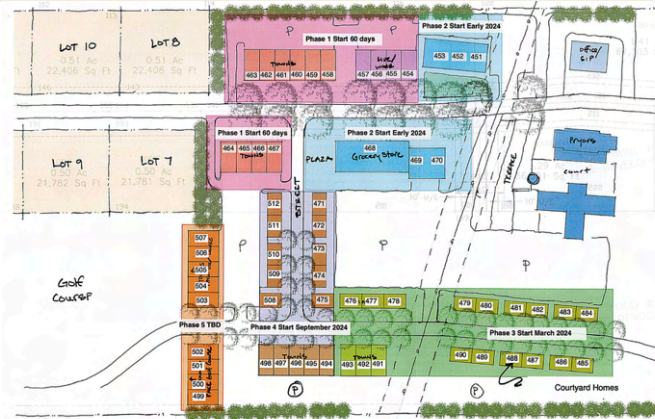
MID MOD PAD

SIMPLISTIC + RETRO WITH A TWIST





UPCOMING NEIGHBORHOODS



Entry District Estates



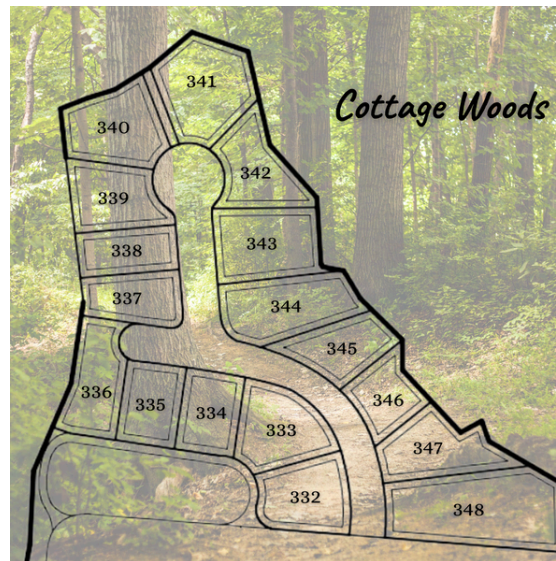
Selah Acres



East Ridge + Vineyard Estates



Sweetwater Village



Cottage Woods



Lower Lake Village

Phase 1A: Entry District Estates



T2: East Ridge and Vineyard Home and Estates



**Parkview Series
Tower Homes**

(privately tucked
throughout Phase 1A
greenspace)



T3 Neighborhood: Sweetwater Village Homes



T4 Future Phase: Southlake Village



ARE YOU READY?

We would love to share more about Selah with you!
Please reach out if you'd like to hear more or take a tour!

SelahOK.com
(405) 267-HOME
Sales@SelahOK.com

ThePropertyCenter.com
405-355-2500
Eli@ThePropertyCenter.com

Selah
Stop. Pause. Listen.

