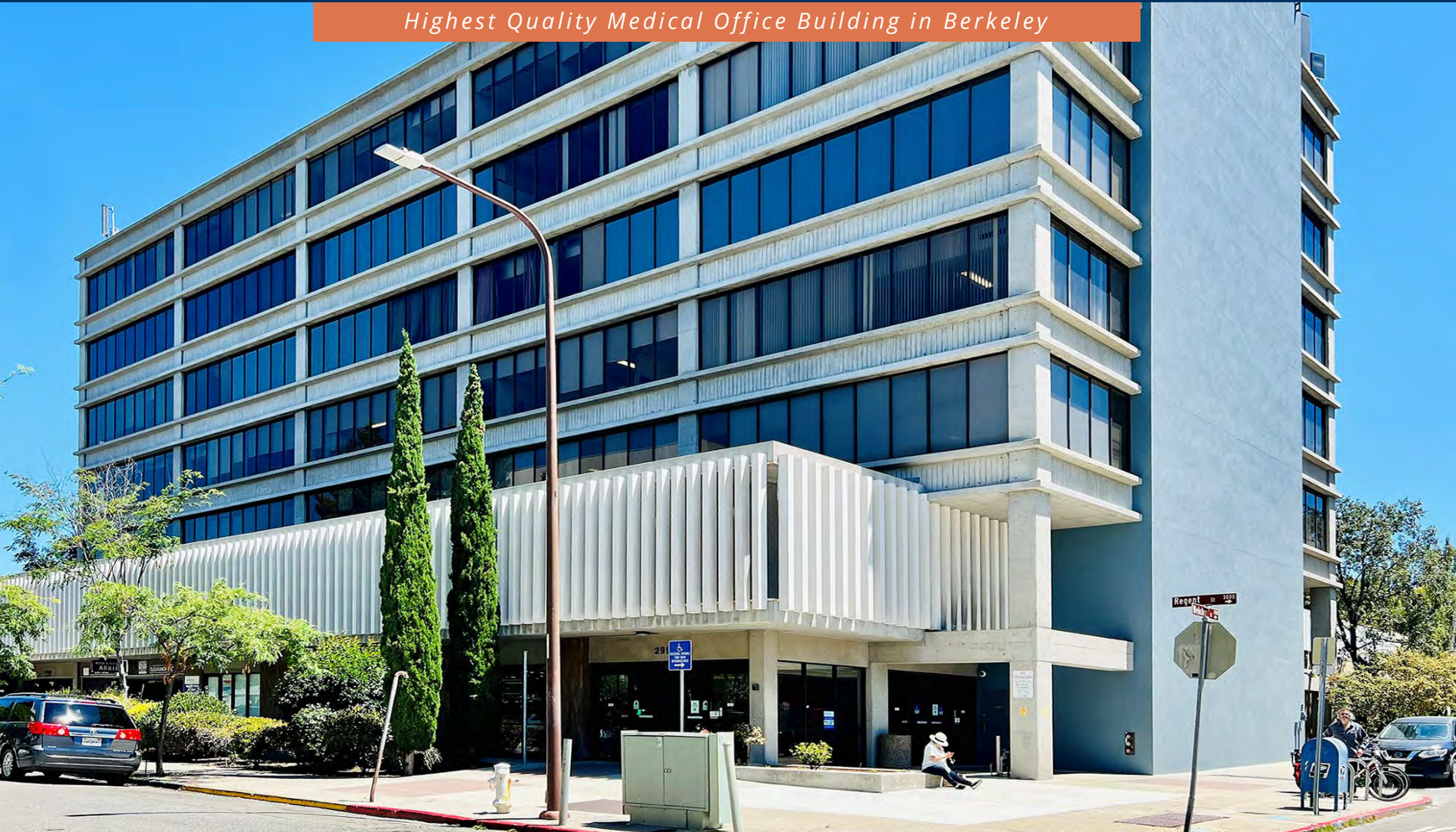


BAYSIDE REALTY PARTNERS PRESENTS

# Regent Medical Center

## 2999 Regent Street, Berkeley

*Highest Quality Medical Office Building in Berkeley*



TRASK LEONARD  
President and CEO  
650.533.2591  
[tleonard@baysiderp.com](mailto:tleonard@baysiderp.com)  
DRE#01152101



CAROLINE DOYLE  
Senior Vice President  
650.722.1495  
[cdoyle@baysiderp.com](mailto:cdoyle@baysiderp.com)  
DRE#01906397



# Regent Medical Center

## 2999 Regent Street, Berkeley

### LOCATION

- Adjacent to Sutter Alta Bates Summit Medical Center, a 461-bed hospital
- Close proximity to UC Berkeley, highways 13 and 24 and I-880 and Ashby BART station
- Within steps of luxurious College Avenue restaurants and shops
- Area has high concentration of commercially insured patients



### BUILDING

- Highest quality and dominant medical office building in market
- Exceptional views of San Francisco and The Bay
- Large mix of practice types, including lab
- New institutional owner with immediate plans to upgrade common areas
- First and second floor suites allow for easy access to attached parking garage
- 195 structured parking stalls with direct access to the building

# Regent Medical Center

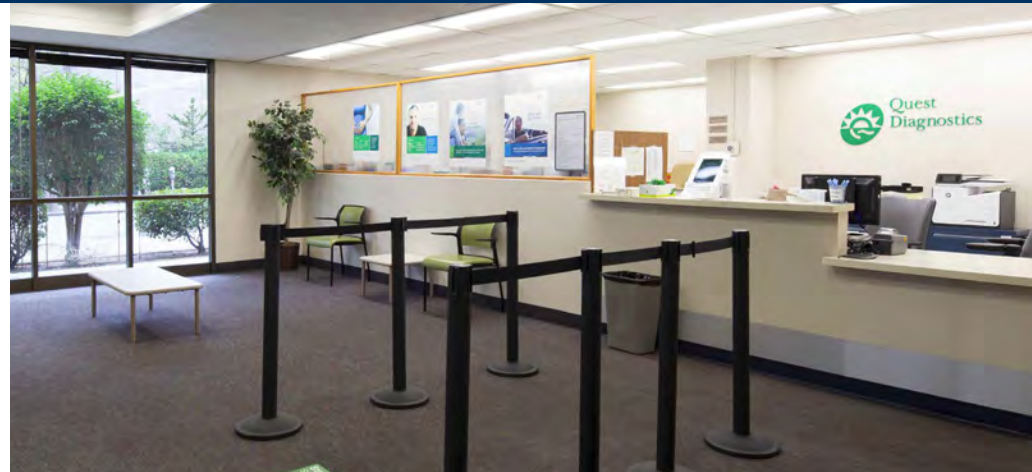
2999 Regent Street, Berkeley





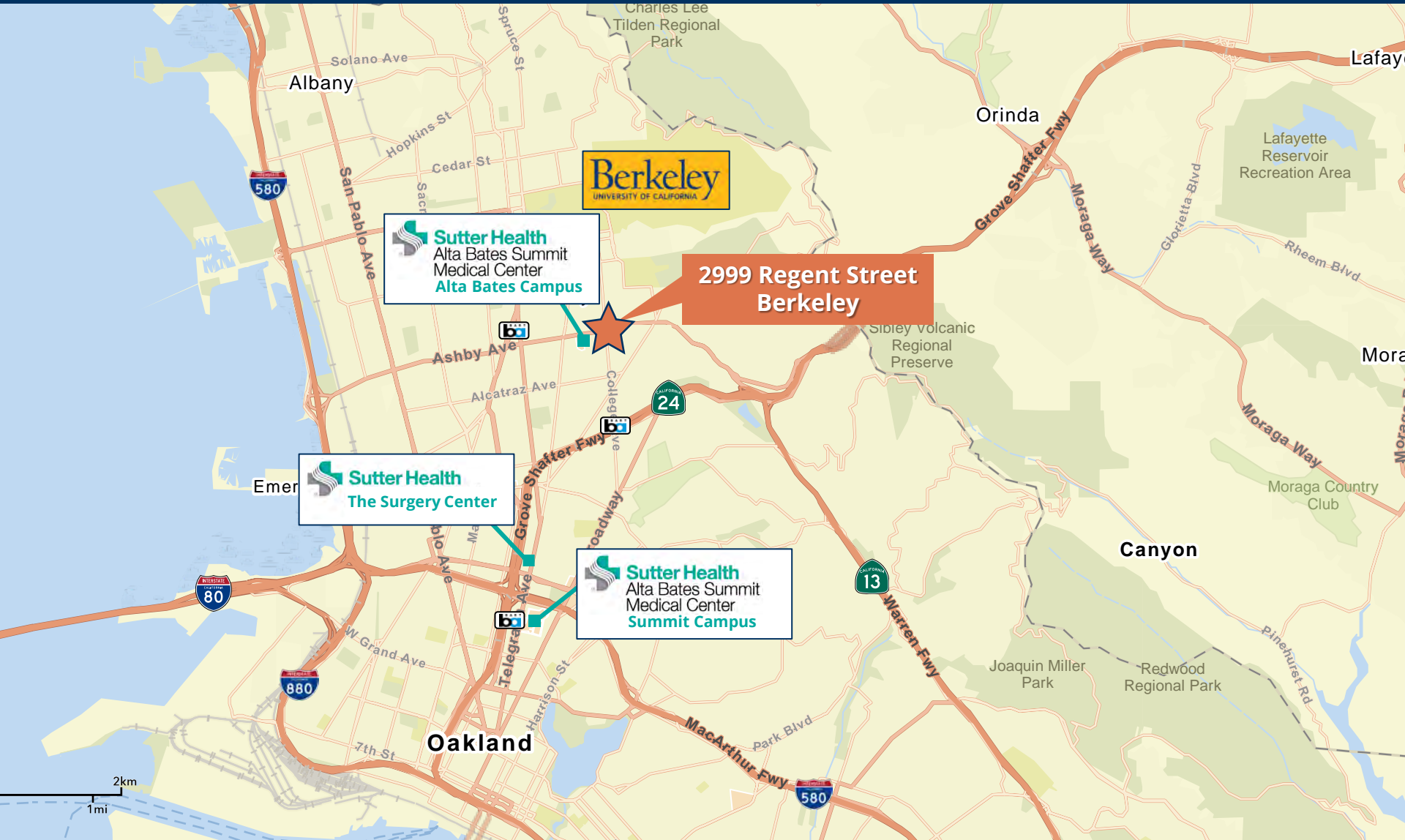
# Regent Medical Center

2999 Regent Street, Berkeley



# Regent Medical Center

## 2999 Regent Street, Berkeley





# Regent Medical Center

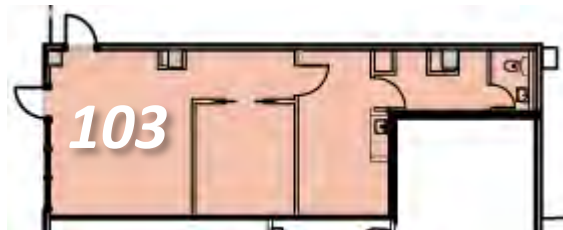
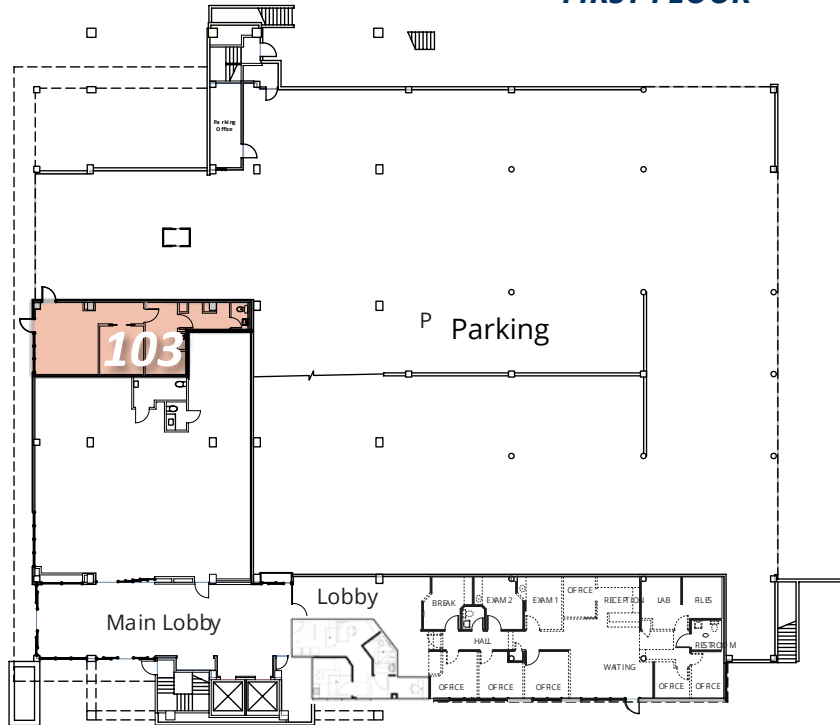
## 2999 Regent Street, Berkeley



# Regent Medical Center

2999 Regent Street, Berkeley

## FIRST FLOOR



## FIRST FLOOR

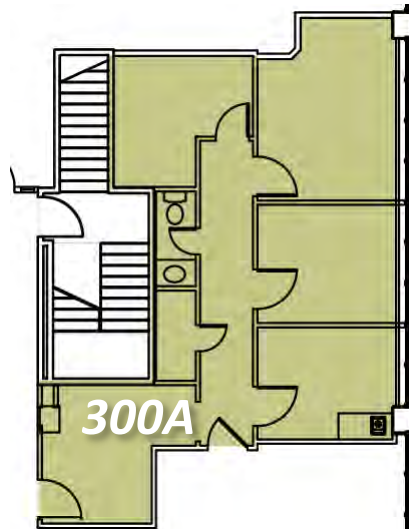
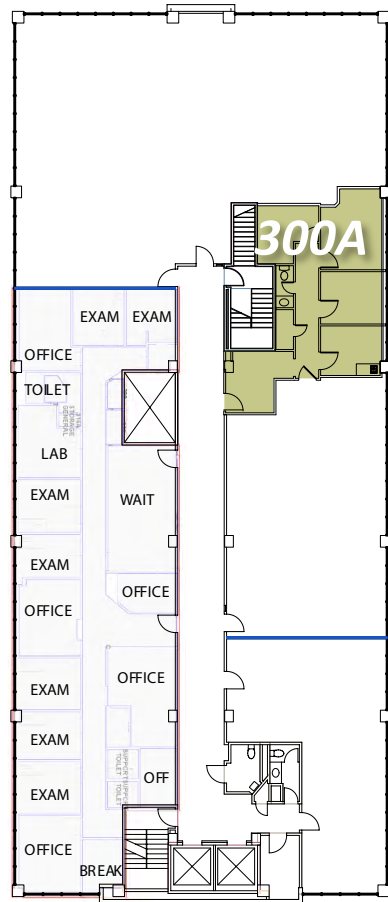
Suite 103 750 RSF

Direct access from Regent street, large reception, exam room, office, restroom

# Regent Medical Center

2999 Regent Street, Berkeley

## THIRD FLOOR



## THIRD FLOOR

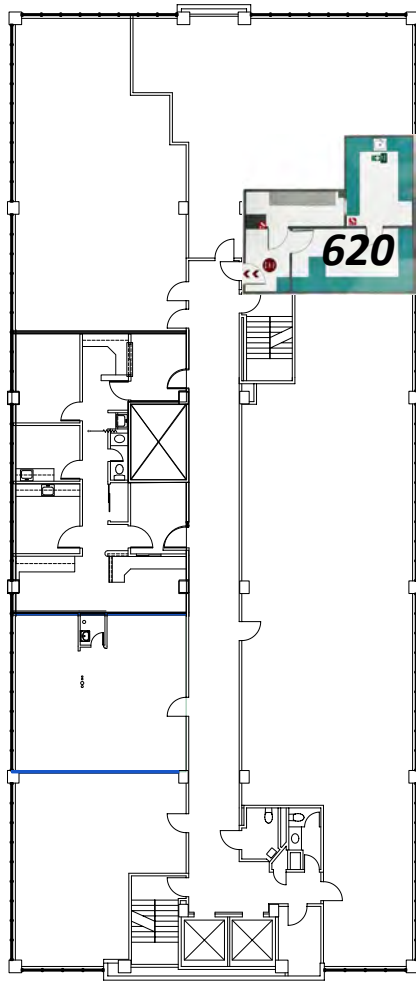
Suite 300A 845 RSF

3 offices, 1 exam room, reception area,  
restroom

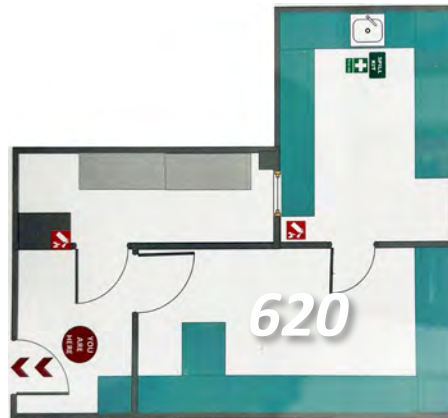


# Regent Medical Center

2999 Regent Street, Berkeley



**SIXTH FLOOR**



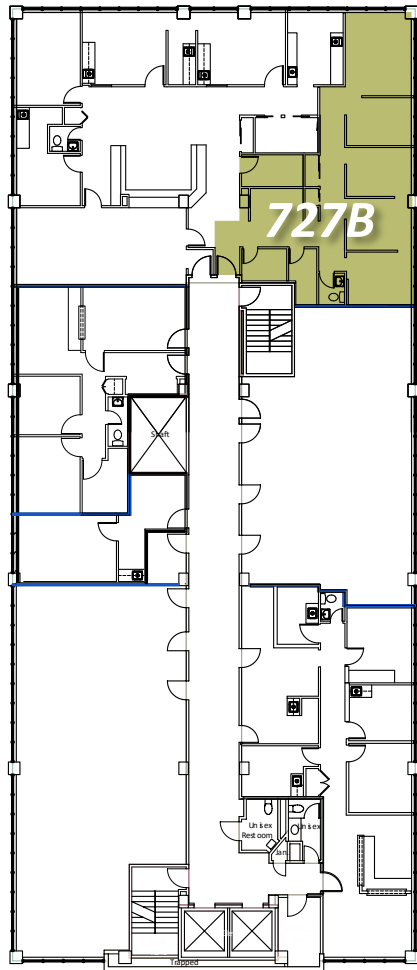
**SIXTH FLOOR**

Suite 620      606 RSF

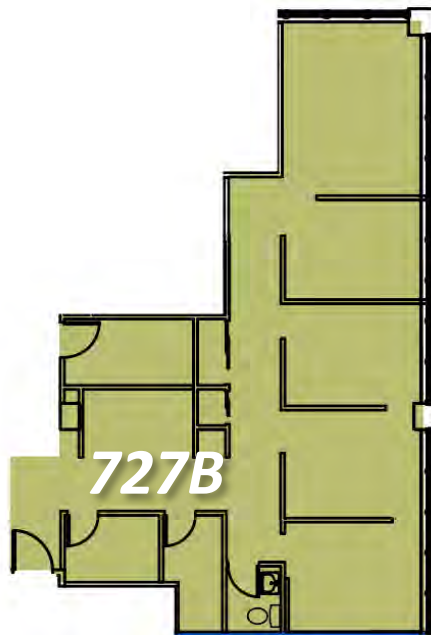
Reception, exam room with sink,  
countertops, storage, large office

# Regent Medical Center

2999 Regent Street, Berkeley



**SEVENTH FLOOR**



**SEVENTH FLOOR**

**Suite 727B     1,143 RSF**

Top Floor suite. 5/6 exam rooms.  
Former dental suite with operatories  
that can be converted to medical exam  
or office



# Meet Your Expert Team



TRASK LEONARD

President and CEO

650.533.2591

[tleonard@baysiderp.com](mailto:tleonard@baysiderp.com)

DRE#01152101



CAROLINE DOYLE

Senior Vice President

650.722.1495

[cdoyle@baysiderp.com](mailto:cdoyle@baysiderp.com)

DRE#01906397

# BAYSIDE REALTY PARTNERS

*The preeminent provider of management, leasing, construction management and accounting services for healthcare properties.*



## MARKET LEADER

- Leasing & Property Management
- Investment Sales
- Tenant Representation
- Construction Management
- Property Repositioning



## INFLUENTIAL NETWORK

- Institutional Investors
- Healthcare Systems and Healthcare Districts
- Physicians & Districts
- Private Investors



## DOMINANT FOOTPRINT

- 2 million SF leased & managed
  - 50+ MOB portfolio
  - 10,000-240,000 SF
  - 500,000 SF portfolio
- San Francisco's largest MOBs
- 950+ leases executed
- 500+ medical and dental tenants

**DOMINANT. EXPERT. INFLUENTIAL.**