



Dove Medical Center

801 E Main Ave, Puyallup, WA 98372

Excellent location on E. Main Ave. in downtown Puyallup, just minutes away from SR-161 and SR-512. This is currently an 1,800sf end-cap office space with an open-plan workspace, three private offices, a storage room, and a restroom. There are two entrances to the suite; one off the parking lot and a second entrance off the partially fenced yard. Puyallup Respiratory Center is next door. Please do not disturb tenant; call broker to schedule a tour.

Property Overview

- Open-plan office with 3 private offices
- Partially fenced yard
- Ample parking and easy access
- Public transportation stop out front
- Space Available: 1,800sf
- Asking Rate: \$20/sf/yr + NNN
- Please do not disturb tenant
- Call broker to schedule a tour

DISCLAIMER: The above information has been secured from sources believed to be reliable, however, no representations are made to its accuracy. Prospective tenants or buyers should consult their professional advisors and conduct their own independent investigation. Properties are subject to change in price and/or availability without notice.



11120 Gravelly Lake Dr SW Ste 2
Lakewood, Washington 98499
johnson-commercial.com

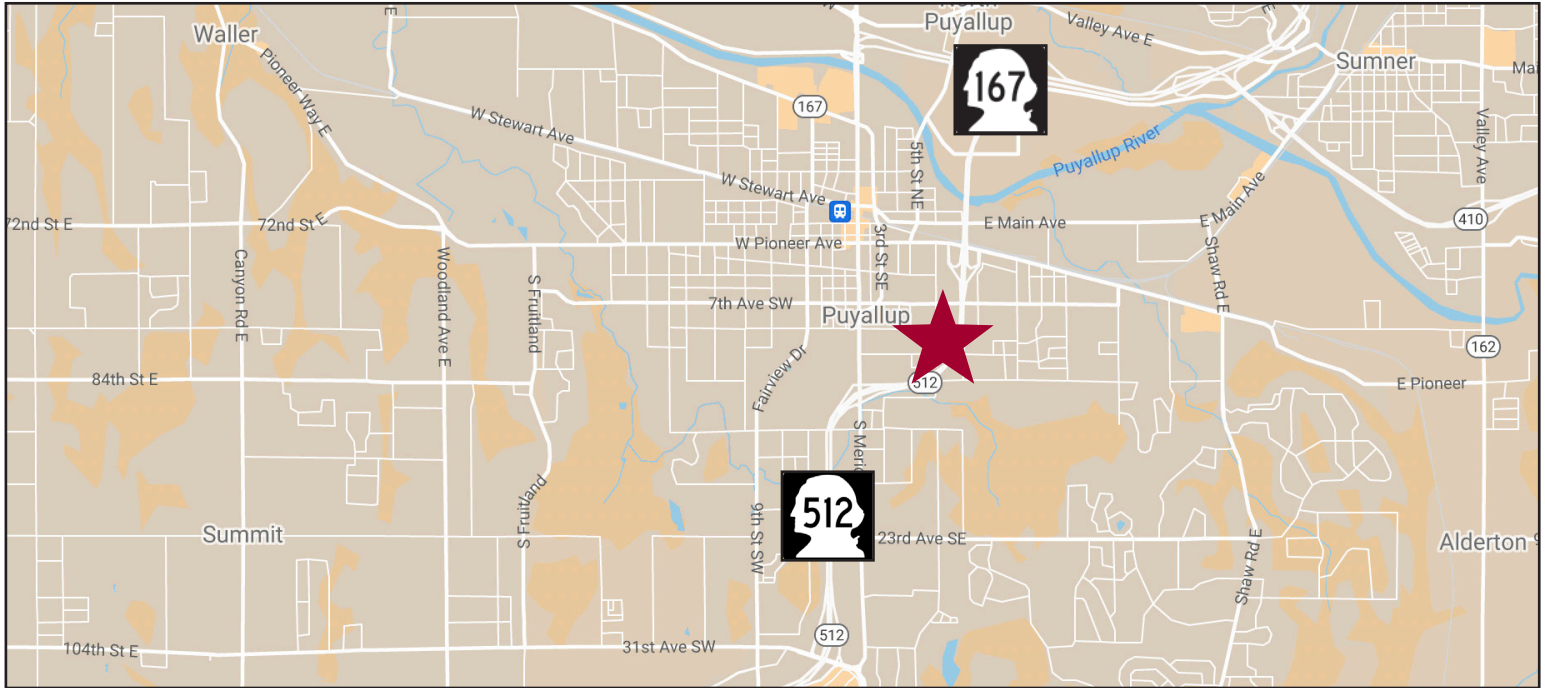
Timothy Johnson
timothy@johnson-commercial.com
(253) 209-9999

Margot Johnson
margot@johnson-commercial.com
(253) 209-9998



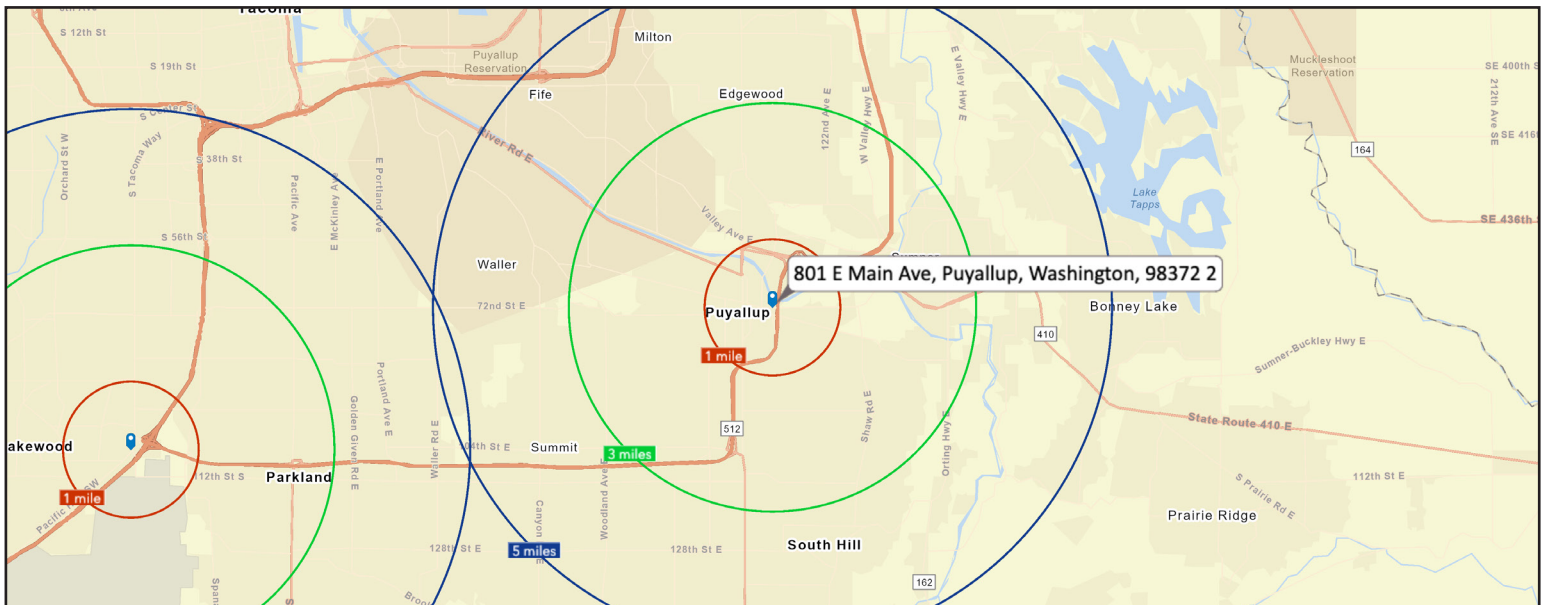
Puyallup Office Space Available

REGIONAL MAP



DEMOGRAPHICS

2022 Population	1 Mile	3 Miles	5 Miles
	10,285	67,391	168,824
2022 Household Income	1 Mile	3 Miles	5 Miles
	\$70,657	\$90,602	\$96,868



11120 Gravelly Lake Dr SW Ste 2
Lakewood, Washington 98499
johnson-commercial.com

Timothy Johnson
timothy@johnson-commercial.com
(253) 209-9999

Margot Johnson
margot@johnson-commercial.com
(253) 209-9998

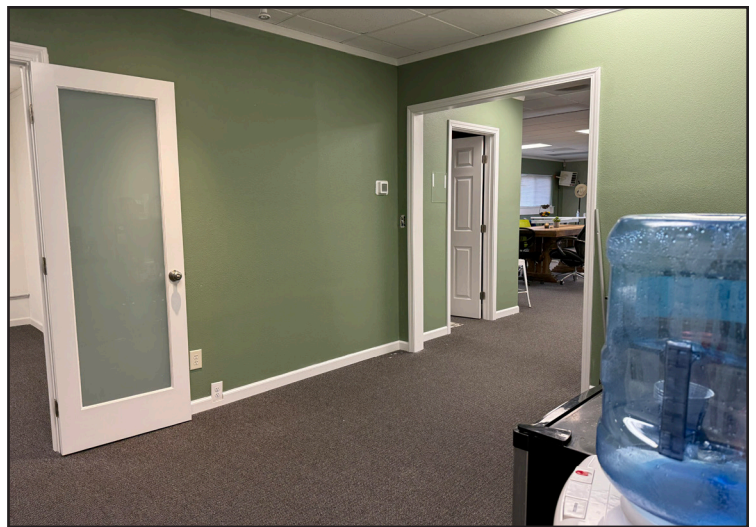


Puyallup Office Space Available

EXTERIOR PHOTOS



INTERIOR PHOTOS - SUITE 803C



11120 Gravelly Lake Dr SW Ste 2
Lakewood, Washington 98499
johnson-commercial.com

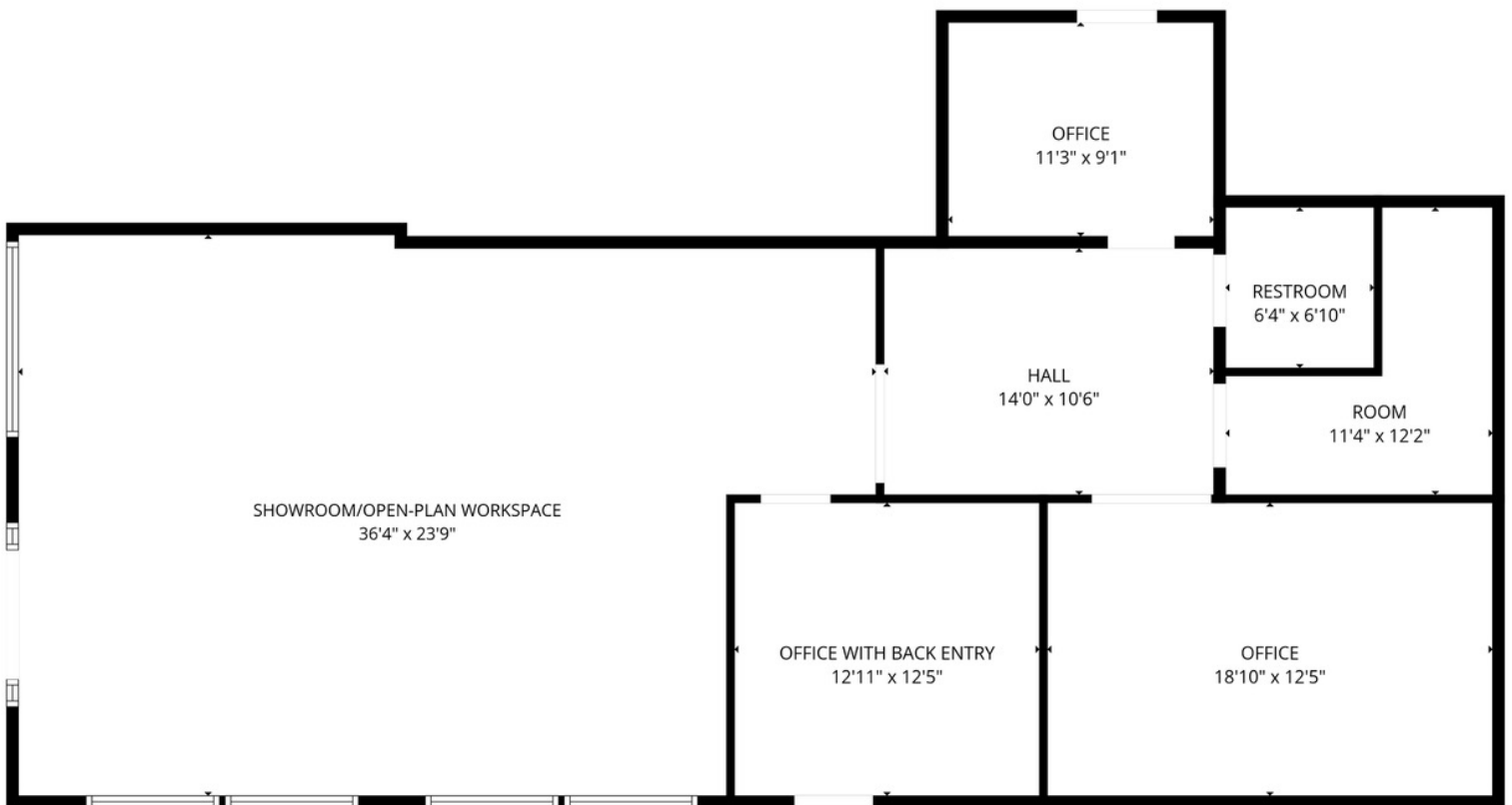
Timothy Johnson
timothy@johnson-commercial.com
(253) 209-9999

Margot Johnson
margot@johnson-commercial.com
(253) 209-9998



Puyallup Office Space Available

FLOOR PLAN - SUITE 803C



FLOOR PLAN CREATED BY CUBICASA APP. MEASUREMENTS DEEMED HIGHLY RELIABLE BUT NOT GUARANTEED.



11120 Gravelly Lake Dr SW Ste 2
Lakewood, Washington 98499
johnson-commercial.com

Timothy Johnson
timothy@johnson-commercial.com
(253) 209-9999

Margot Johnson
margot@johnson-commercial.com
(253) 209-9998