

# TENANCY

WE HAVE UPDATED THIS LAYOUT TO FOLLOW YOUR REQUIREMENTS, BUT THE FINAL RESPONSIBILITY FOR ITS ACCURACY RESTS ON YOU. YOUR SIGNATURE GIVES US APPROVAL TO PROCEED WITH THE DRAWINGS DEVELOPMENT.

PLEASE CHECK ONE OF THE FOLLOWING:

- ☐ APPROVED AS IS
- ☐ APPROVED WITH CHANGES AS NOTED
- ☐ FINAL APPROVAL

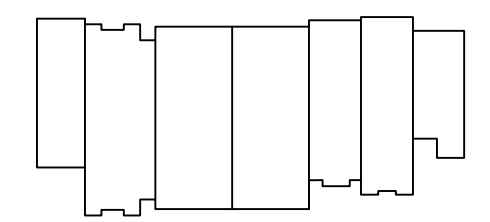
SIGNATURE

DATE

## REVISION

|          |          |
|----------|----------|
| ISSUE: A | 04/17/25 |
|          |          |
|          |          |
|          |          |

## BUILDING KEY MAP

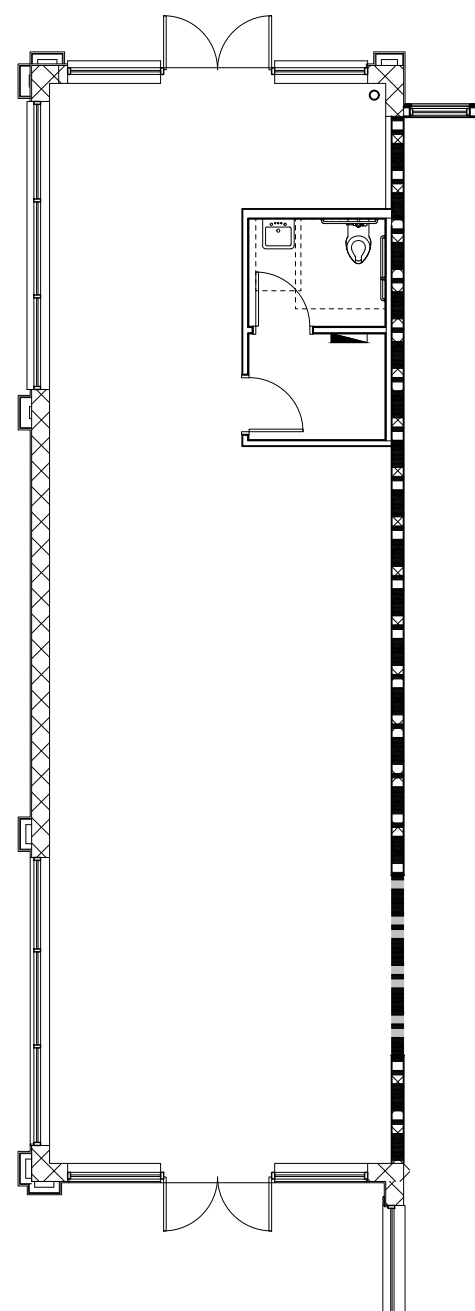


The Shoppes off 80<sup>th</sup>  
World Equestrian Center, Ocala Florida

BUILDING B



DESIGNERS - PLANNERS  
BY MICHAEL JAMES SOPOLIGA  
815 Orienta Ave., Suite #1040  
Altamonte Springs, Fl. 32701  
Ph: (407) 629-6711  
Fax: (407) 629-6776  
www.mjshomedesign.com



FIRST FLOOR  
3/32" = 1'-0"



COURTYARD  
ELEVATION



PARKING LOT  
ELEVATION



## TENANCY

WE HAVE UPDATED THIS LAYOUT TO FOLLOW YOUR REQUIREMENTS, BUT THE FINAL RESPONSIBILITY FOR ITS ACCURACY RESTS ON YOU. YOUR SIGNATURE GIVES US APPROVAL TO PROCEED WITH THE DRAWINGS DEVELOPMENT.

PLEASE CHECK ONE OF THE FOLLOWING:

- ☐ APPROVED AS IS
- ☐ APPROVED WITH CHANGES AS NOTED
- ☐ FINAL APPROVAL

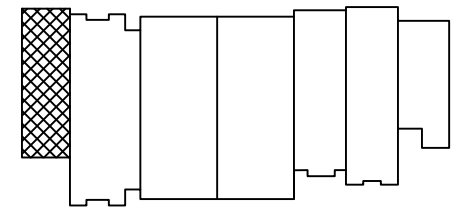
SIGNATURE

DATE

## REVISION

|                             |          |
|-----------------------------|----------|
| ISSUE: A                    | 04/17/25 |
| B: TINA STEPHENS LOGO ADDED | 06/19/25 |
|                             |          |
|                             |          |

## BUILDING KEY MAP



## SQ FEET

|                  |        |
|------------------|--------|
| 1st floor        | 1263   |
| 2nd floor        | -      |
| TOTAL            | 1263   |
| STOREFRONT WIDTH | 20'-0" |

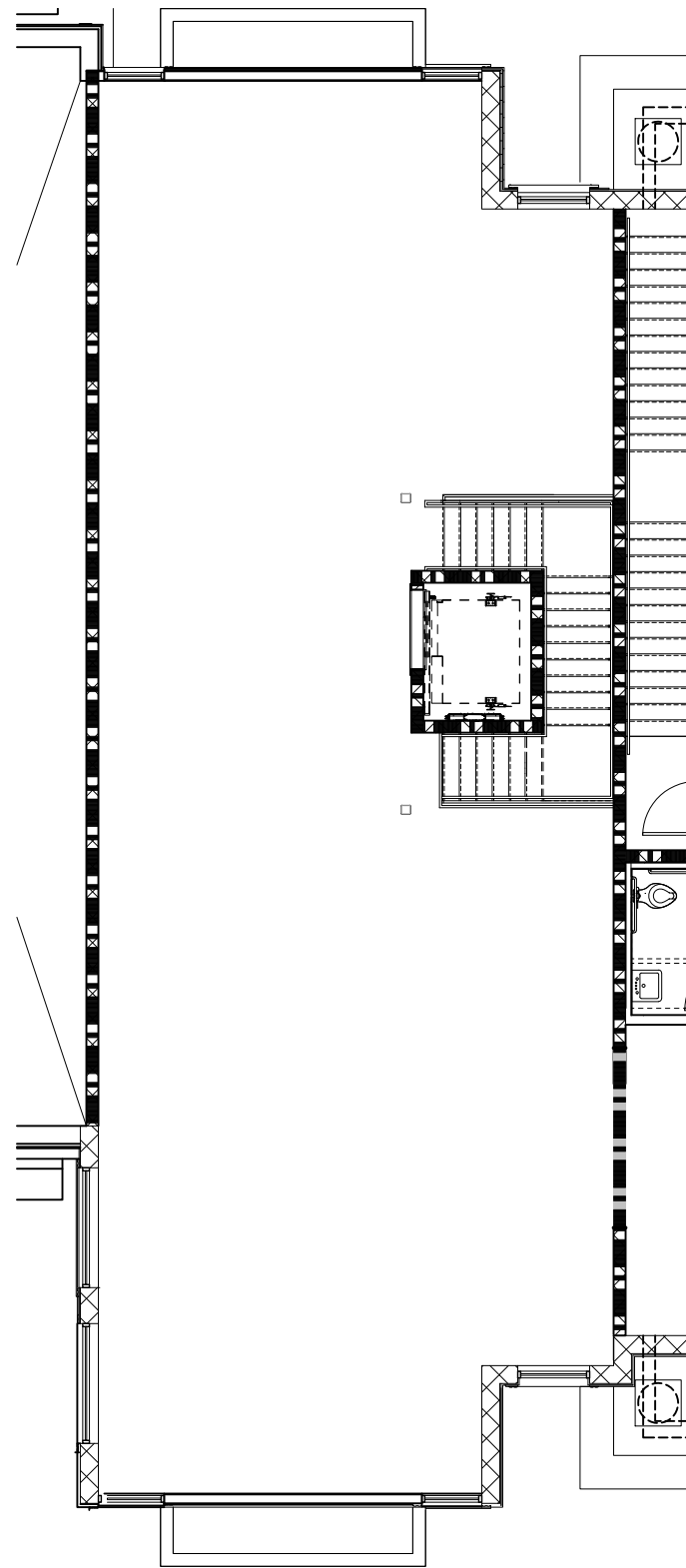


The Shoppes off 80<sup>th</sup>  
World Equestrian Center, Ocala Florida

UNIT B-01

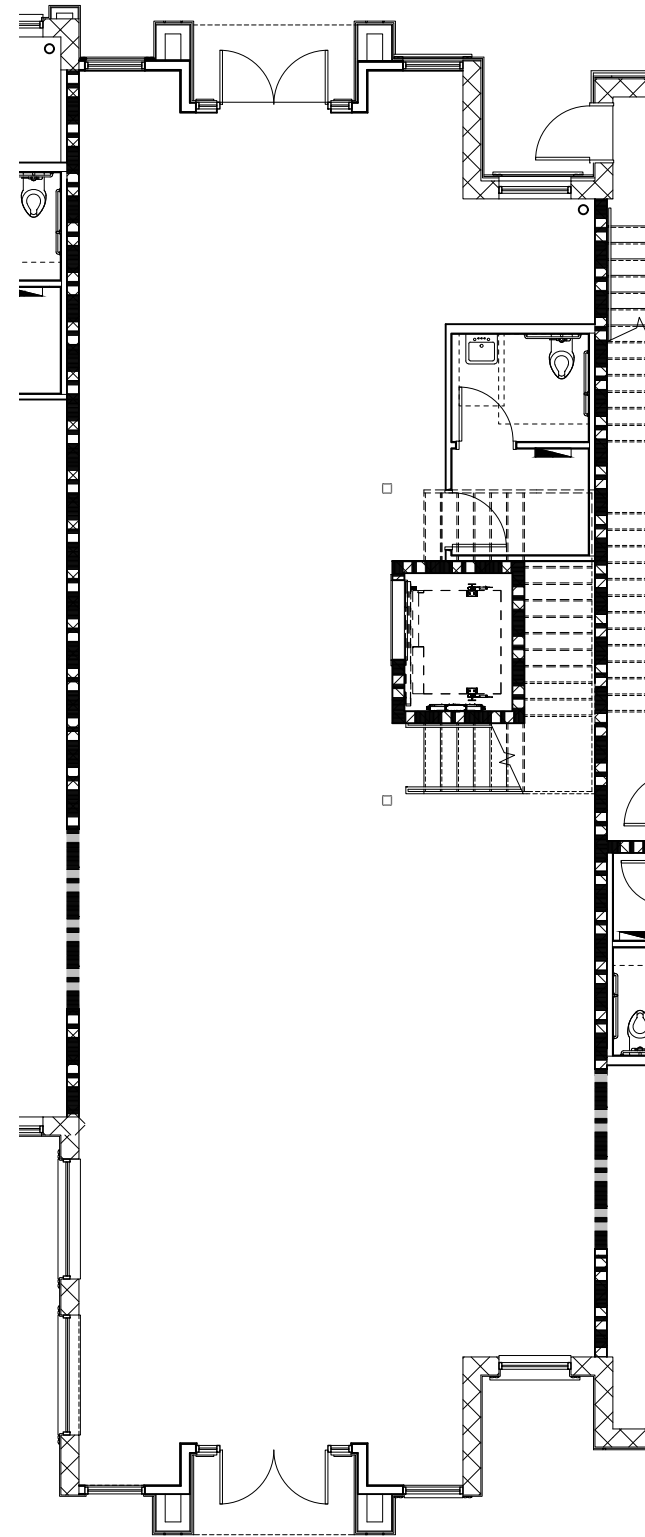


DESIGNERS - PLANNERS  
BY MICHAEL JAMES SOPOLIGA  
815 Orienta Ave., Suite #1040  
Altamonte Springs, FL 32701  
Ph: (407) 629-6711  
Fax: (407) 629-6776  
www.mjshomedesign.com



SECOND FLOOR

3 / 32" = 1'-0"



FIRST FLOOR

3 / 32" = 1'-0"

## TENANCY

WE HAVE UPDATED THIS LAYOUT TO FOLLOW YOUR REQUIREMENTS,  
BUT THE FINAL RESPONSIBILITY FOR ITS ACCURACY RESTS ON YOU.  
YOUR SIGNATURE GIVES US APPROVAL TO PROCEED WITH THE  
DRAWINGS DEVELOPMENT.

PLEASE CHECK ONE OF THE FOLLOWING:

- ☐ APPROVED AS IS  
☐ APPROVED WITH CHANGES AS NOTED  
☐ FINAL APPROVAL

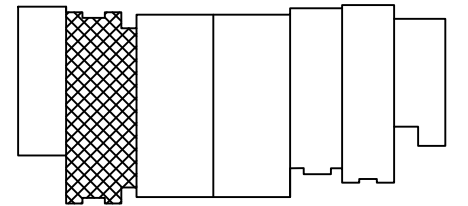
SIGNATURE

DATE

## REVISION

ISSUE: A 04/17/25

## BUILDING KEY MAP



## SQ FEET

|                  |        |
|------------------|--------|
| 1st floor        | 2162   |
| 2nd floor        | 2196   |
| TOTAL            | 4358   |
| STOREFRONT WIDTH | 29'-0" |

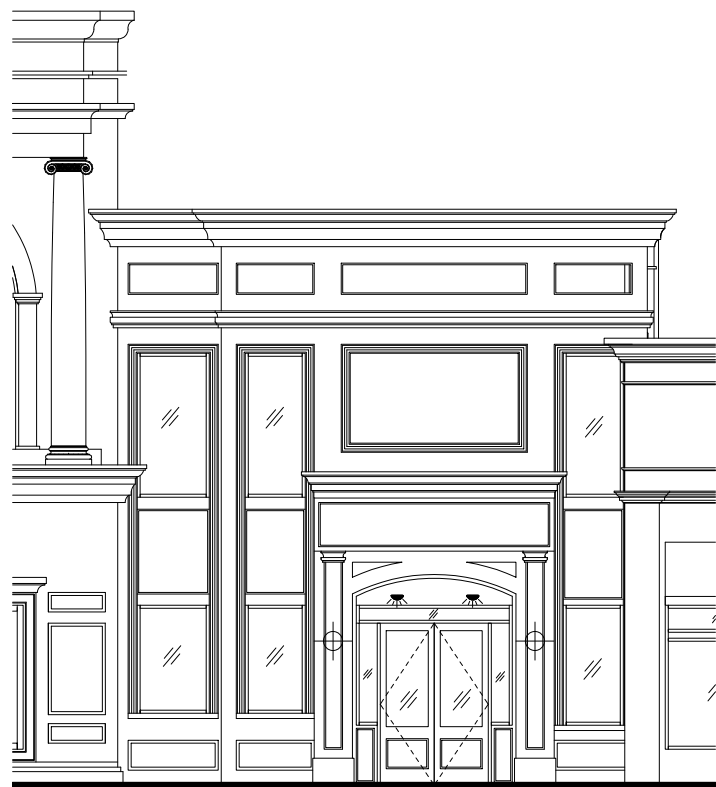


**The Shoppes** off 80<sup>th</sup>  
World Equestrian Center, Ocala Florida

UNIT B-02

**MJS**  
designers group  
residential • commercial • architecture

DESIGNERS - PLANNERS  
BY MICHAEL JAMES SOPOLIGA  
815 Orienta Ave., Suite #1040  
Altamonte Springs, FL 32701  
Ph: (407) 629-6711  
Fax: (407) 629-6776  
www.mjshomedesign.com



PARKING LOT  
ELEVATION



COURTYARD  
ELEVATION



## TENANCY

WE HAVE UPDATED THIS LAYOUT TO FOLLOW YOUR REQUIREMENTS,  
BUT THE FINAL RESPONSIBILITY FOR ITS ACCURACY RESTS ON YOU.  
YOUR SIGNATURE GIVES US APPROVAL TO PROCEED WITH THE  
DRAWINGS DEVELOPMENT.

PLEASE CHECK ONE OF THE FOLLOWING:

- ☐ APPROVED AS IS  
☐ APPROVED WITH CHANGES AS NOTED  
☐ FINAL APPROVAL

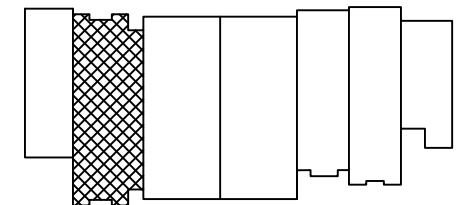
SIGNATURE

DATE

## REVISION

|                    |          |
|--------------------|----------|
| ISSUE: A           | 04/17/25 |
| B: MUNTINS REMOVED | 09/03/24 |

## BUILDING KEY MAP



**The Shoppes** off 80<sup>th</sup>  
World Equestrian Center, Ocala Florida

UNIT B-02

**MJS**  
designers group  
residential • commercial • architecture

DESIGNERS - PLANNERS  
BY MICHAEL JAMES SOPOLIGA  
815 Orienta Ave., Suite #1040  
Altamonte Springs, Fl. 32701  
Ph: (407) 629-6711  
Fax: (407) 629-6776  
www.mjshomedesign.com





## TENANCY

WE HAVE UPDATED THIS LAYOUT TO FOLLOW YOUR REQUIREMENTS, BUT THE FINAL RESPONSIBILITY FOR ITS ACCURACY RESTS ON YOU. YOUR SIGNATURE GIVES US APPROVAL TO PROCEED WITH THE DRAWINGS DEVELOPMENT.

PLEASE CHECK ONE OF THE FOLLOWING:

- ☐ APPROVED AS IS  
☐ APPROVED WITH CHANGES AS NOTED  
☐ FINAL APPROVAL

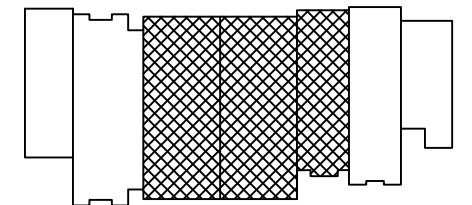
SIGNATURE

DATE

## REVISION

|                           |          |
|---------------------------|----------|
| ISSUE: A                  | 04/17/25 |
| SHOPS B03 TO B05 COMBINED | 08/15/25 |

## BUILDING KEY MAP

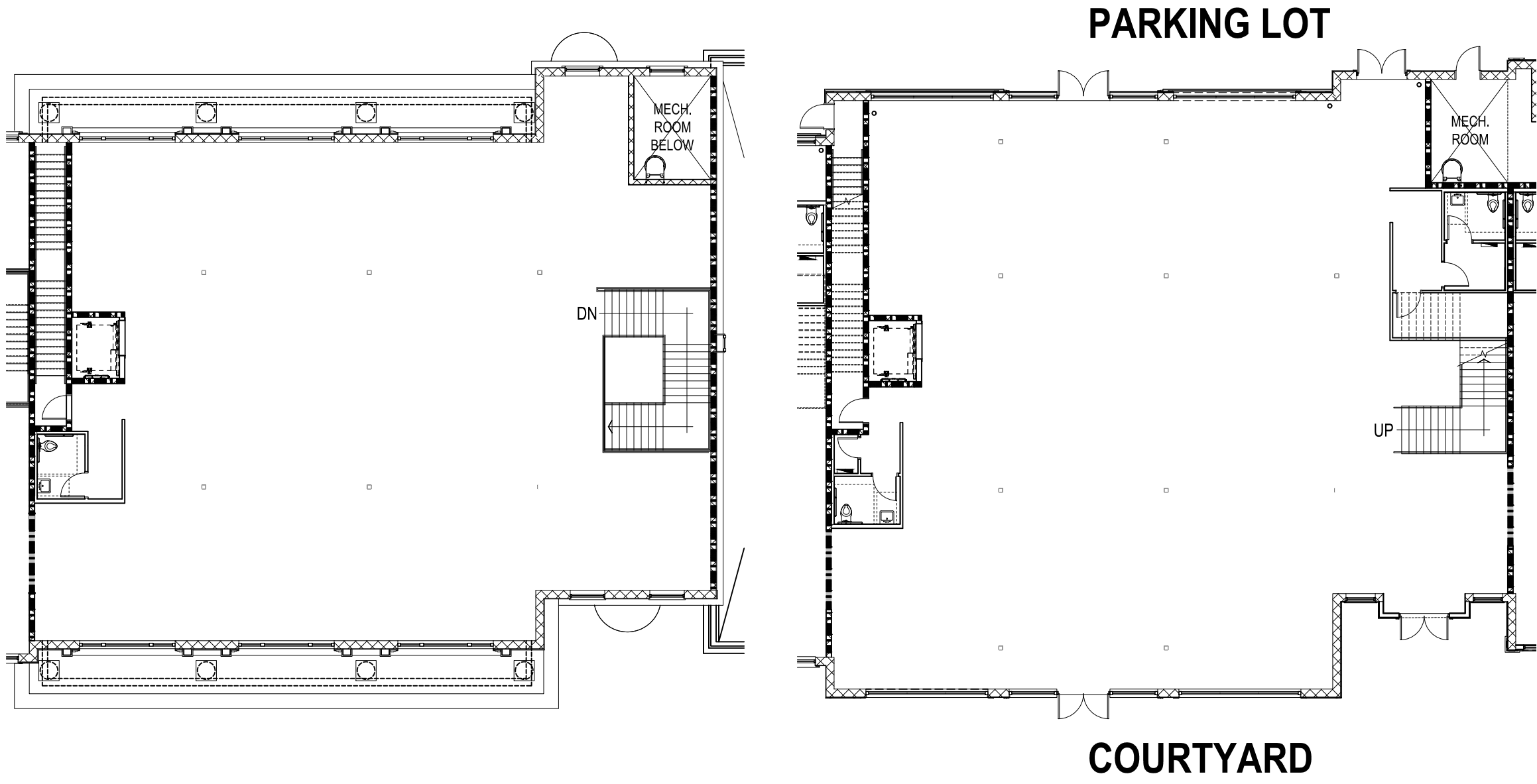


**The Shoppes off 80<sup>th</sup>**  
World Equestrian Center, Ocala Florida

UNIT B-03 to 05



DESIGNERS - PLANNERS  
BY MICHAEL JAMES SOPOLIGA  
815 Orienta Ave., Suite #1040  
Altamonte Springs, FL 32701  
Ph: (407) 629-6711  
Fax: (407) 629-6776  
www.mjshomedesign.com



SECOND FLOOR  
1/16" = 1'-0"

FIRST FLOOR  
1/16" = 1'-0"



## TENANCY

WE HAVE UPDATED THIS LAYOUT TO FOLLOW YOUR REQUIREMENTS, BUT THE FINAL RESPONSIBILITY FOR ITS ACCURACY RESTS ON YOU. YOUR SIGNATURE GIVES US APPROVAL TO PROCEED WITH THE DRAWINGS DEVELOPMENT.

PLEASE CHECK ONE OF THE FOLLOWING:

- ☐ APPROVED AS IS
- ☐ APPROVED WITH CHANGES AS NOTED
- ☐ FINAL APPROVAL

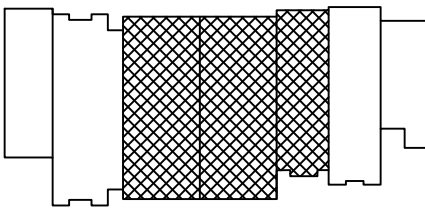
SIGNATURE \_\_\_\_\_

DATE \_\_\_\_\_

## REVISION

|  |          |
|--|----------|
| ISSUE: A                               | 04/17/25 |
| SHOPS B03 TO B05 COMBINED              | 08/14/25 |
| LOCATION FOR ELEVATOR + STAIRS REVISED | 08/15/25 |

## BUILDING KEY MAP



| COMBINED SQ FEET |         |
|------------------|---------|
| 1st floor        | 5750    |
| 2nd floor        | 5510    |
| TOTAL            | 11260   |
| STOREFRONT WIDTH | 85'-10" |



**The Shoppes** off 80<sup>th</sup>  
World Equestrian Center, Ocala Florida

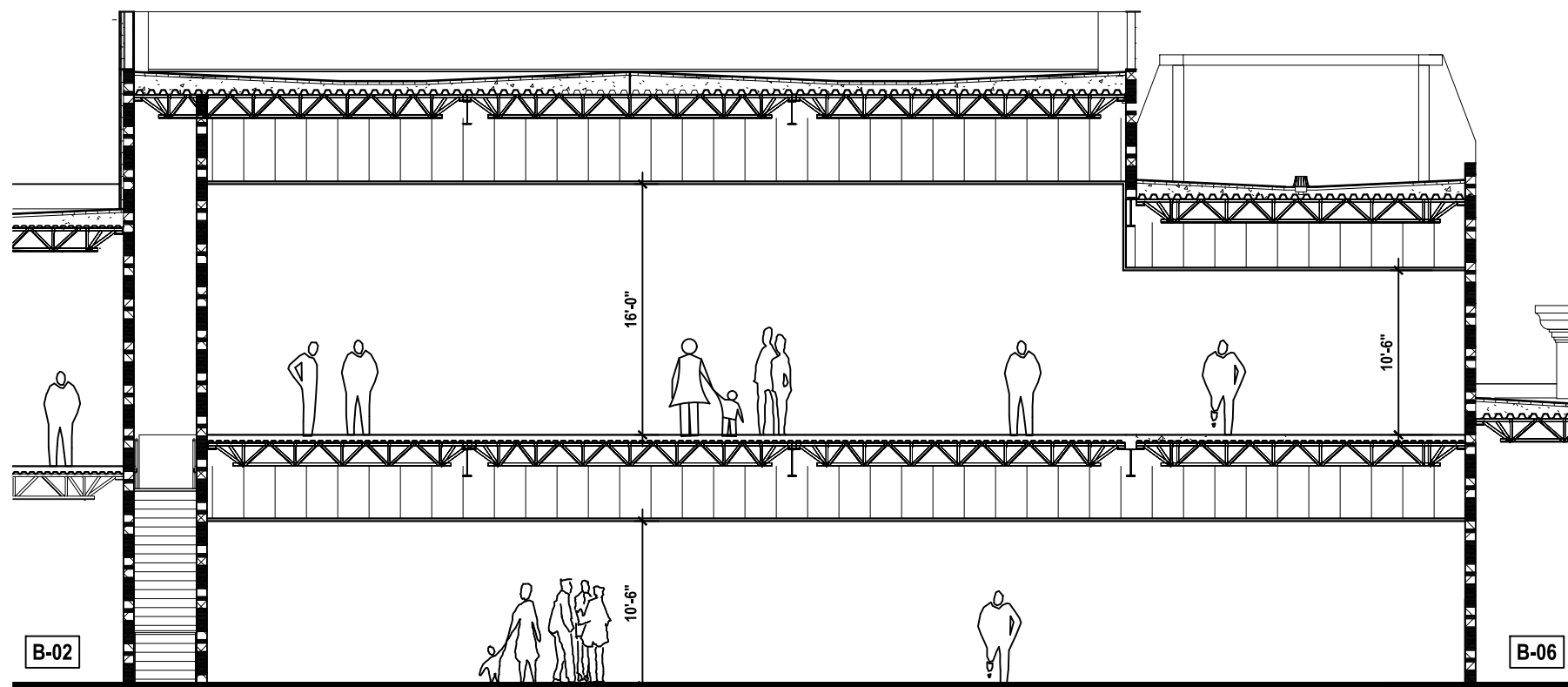
UNIT B-03 to 05

**MJS**  
designers group  
residential • commercial • architecture

DESIGNERS - PLANNERS  
BY MICHAEL JAMES SOPOLIGA  
815 Orienta Ave., Suite #1040  
Altamonte Springs, FL 32701  
Ph: (407) 629-6711  
Fax: (407) 629-6776  
www.mjshomedesign.com



COURTYARD ELEVATION



OVERALL LONGITUDINAL SECTION

## TENANCY

WE HAVE UPDATED THIS LAYOUT TO FOLLOW YOUR REQUIREMENTS, BUT THE FINAL RESPONSIBILITY FOR ITS ACCURACY RESTS ON YOU. YOUR SIGNATURE GIVES US APPROVAL TO PROCEED WITH THE DRAWINGS DEVELOPMENT.

PLEASE CHECK ONE OF THE FOLLOWING:

- ☐ APPROVED AS IS  
☐ APPROVED WITH CHANGES AS NOTED  
☐ FINAL APPROVAL

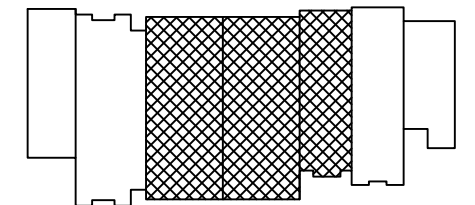
SIGNATURE

DATE

## REVISION

|                           |          |
|---------------------------|----------|
| ISSUE: A                  | 04/17/25 |
| SHOPS B03 TO B05 COMBINED | 08/14/25 |
|                           |          |
|                           |          |

## BUILDING KEY MAP



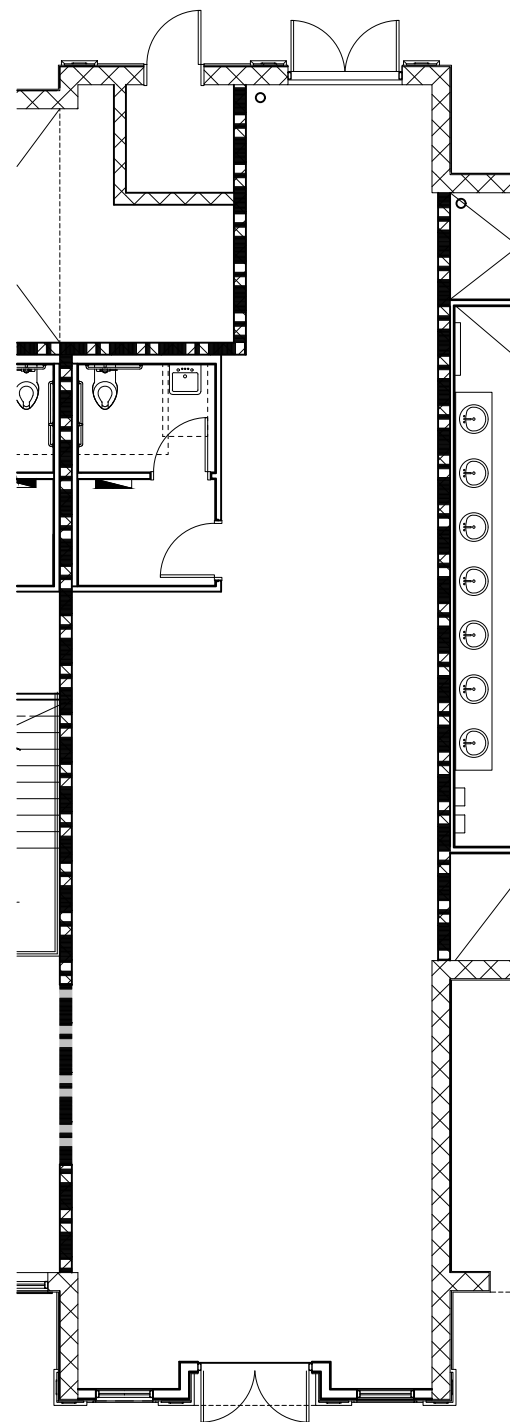
**The Shoppes** off 80<sup>th</sup>  
World Equestrian Center, Ocala Florida

UNIT B-03 to 05

**MJS**  
designers group  
residential • commercial • architecture

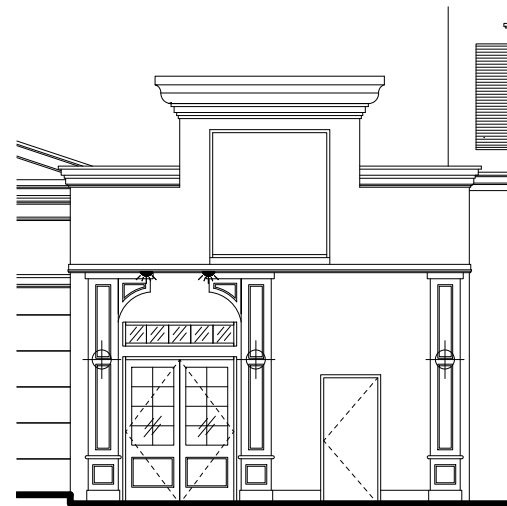
DESIGNERS - PLANNERS  
BY MICHAEL JAMES SOPOLIGA  
815 Orienta Ave., Suite #1040  
Altamonte Springs, FL 32701  
Ph: (407) 629-6711  
Fax: (407) 629-6776  
www.mjshomedesign.com



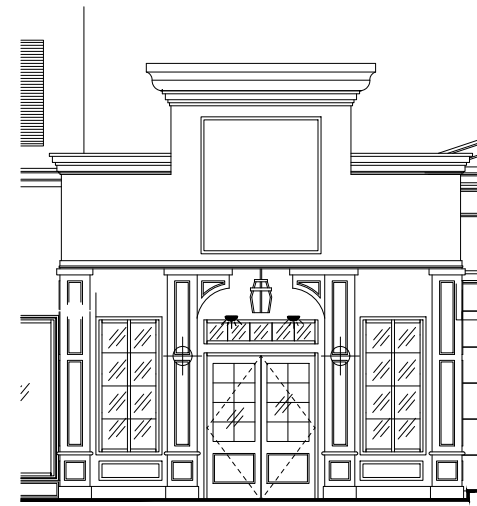


FIRST FLOOR

3 / 32" = 1'-0"



PARKING LOT  
ELEVATION



COURTYARD  
ELEVATION



## TENANCY

WE HAVE UPDATED THIS LAYOUT TO FOLLOW YOUR REQUIREMENTS,  
BUT THE FINAL RESPONSIBILITY FOR ITS ACCURACY RESTS ON YOU.  
YOUR SIGNATURE GIVES US APPROVAL TO PROCEED WITH THE  
DRAWINGS DEVELOPMENT.

PLEASE CHECK ONE OF THE FOLLOWING:

- ☐ APPROVED AS IS  
☐ APPROVED WITH CHANGES AS NOTED  
☐ FINAL APPROVAL

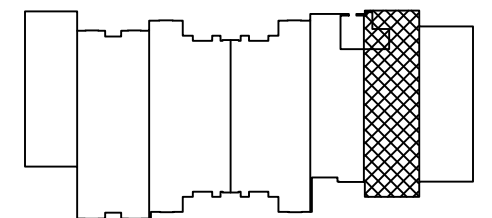
SIGNATURE

DATE

## REVISION

|                               |          |
|-------------------------------|----------|
| ISSUE: A                      | 04/17/25 |
| B: TINA STEPHENS LOGO ADDED   | 09/30/24 |
| C: TINA STEPHENS LOGO REMOVED | 06/19/25 |

## BUILDING KEY MAP



## SQ FEET

|                  |        |
|------------------|--------|
| 1st floor        | 1438   |
| 2nd floor        | -      |
| TOTAL            | 1438   |
| STOREFRONT WIDTH | 21'-0" |



**The Shoppes** off 80<sup>th</sup>  
World Equestrian Center, Ocala Florida

UNIT B-06

**MJS**  
designers group  
residential • commercial • architecture

DESIGNERS - PLANNERS  
BY MICHAEL JAMES SOPOLIGA  
815 Orienta Ave., Suite #1040  
Altamonte Springs, FL 32701  
Ph: (407) 629-6711  
Fax: (407) 629-6776  
www.mjshomedesign.com