



# GRAMERCY MEDICAL ARTS BUILDING

380 SECOND AVENUE

---

JOIN A PRESTIGIOUS TENANT ROSTER INCLUDING



---

MOVE-IN READY - FULLY BUILT SUITE - IMMEDIATE POSSESSION  
2,432 RSF

---





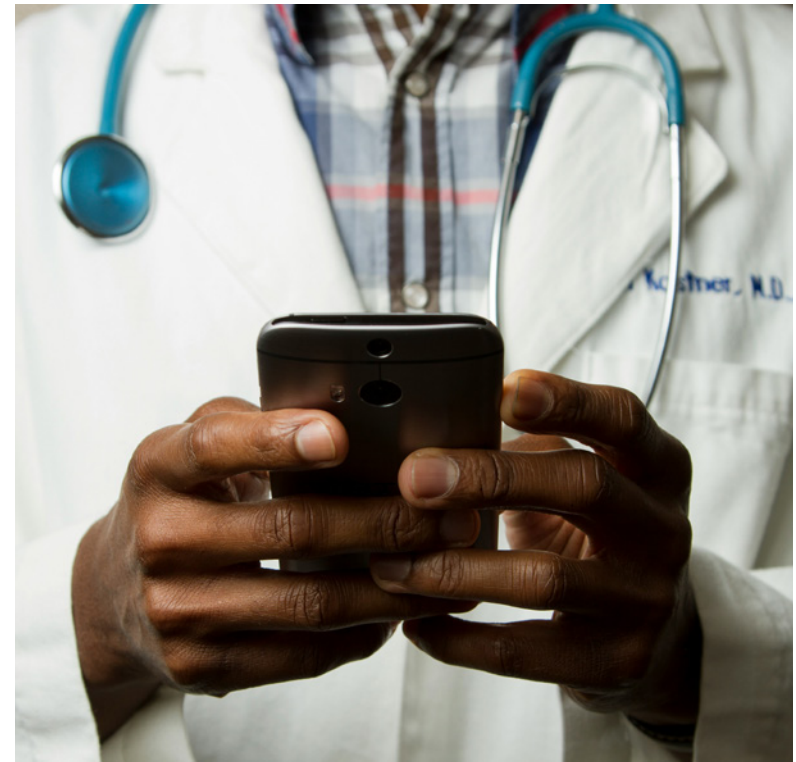
The new side street lobby makes a modern, forward thinking design statement - under construction

### Property Highlights

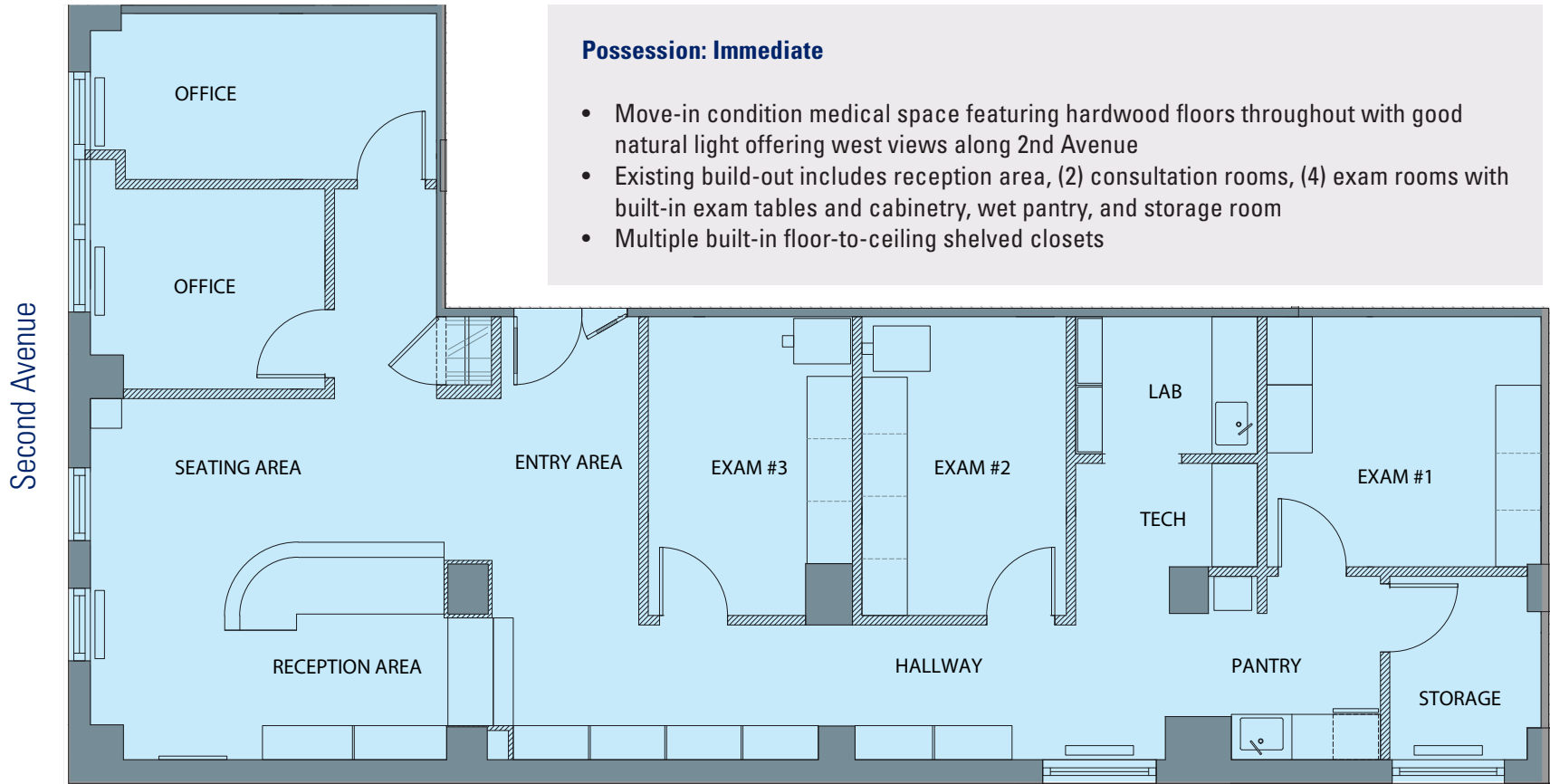
- Join prestigious tenant roster including New York University, Gramercy Surgery Center, New York Eye & Ear Infirmary, School of Visual Arts, NYU Langone
- Brand new 22nd Street lobby under construction
- Multiple fiber providers
- 24/7/365 Tenant access via two lobbies
- Oversized operable windows with impressive natural light
- Floors can accommodate significant loads required for medical equipment
- Sit-up gurney sized elevators available for use
- Long-term stable ownership
- Landlord will consider requests for cosmetic alterations



The new side street lobby includes a convenient "grab & go" pantry - under construction



# Suite 1003: 2,432 rsf






**GRAMERCY MEDICAL  
ARTS BUILDING**

Surrounded by New York's  
Leading Medical Institutions





For further information and/or inspection contact:

**James Caseley**  
**Partner**

212.400.6075  
jc@absre.com

**Ben Waller**

Partner

212.400.9515  
bwaller@absre.com

**Daria Ghasemi**

Associate

646.439.2001  
dghasemi@absre.com

**Zoe Snow**

Associate

646.439.2000  
zsnow@absre.com