

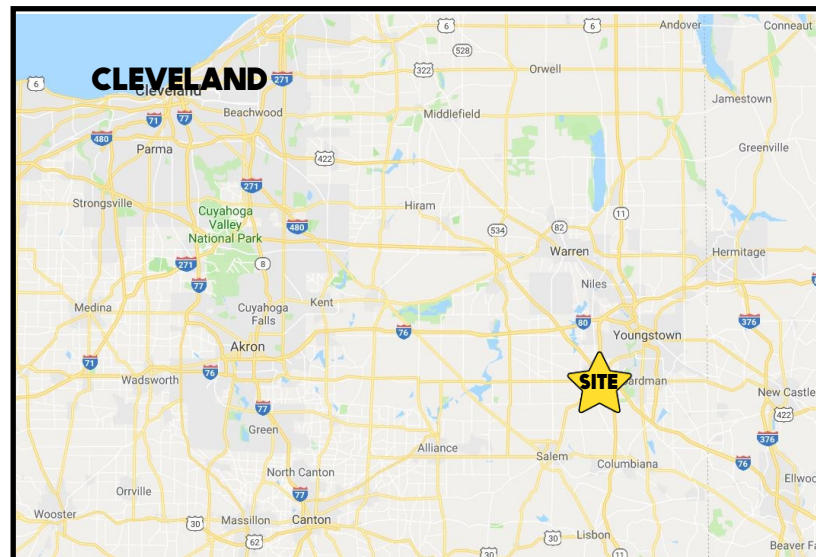
LOCATION

3667 Starr Centre Dr, Canfield, OH 44406



HIGHLIGHTS

- Multi-tenant brick building
- Visibility from US 224 (Boardman Canfield Rd)
- Just west of Tippecanoe Rd / US 224 intersection in Boardman / Canfield's professional business district
- Located in Canfield Township (No city income tax)



TRAFFIC

Boardman Canfield Rd = 30,008 VPD

3D TOUR

[3667](#)

CONTACT

ADAM DIVEBISS

501.551.3817

adivebiss@platzrealtygroup.com

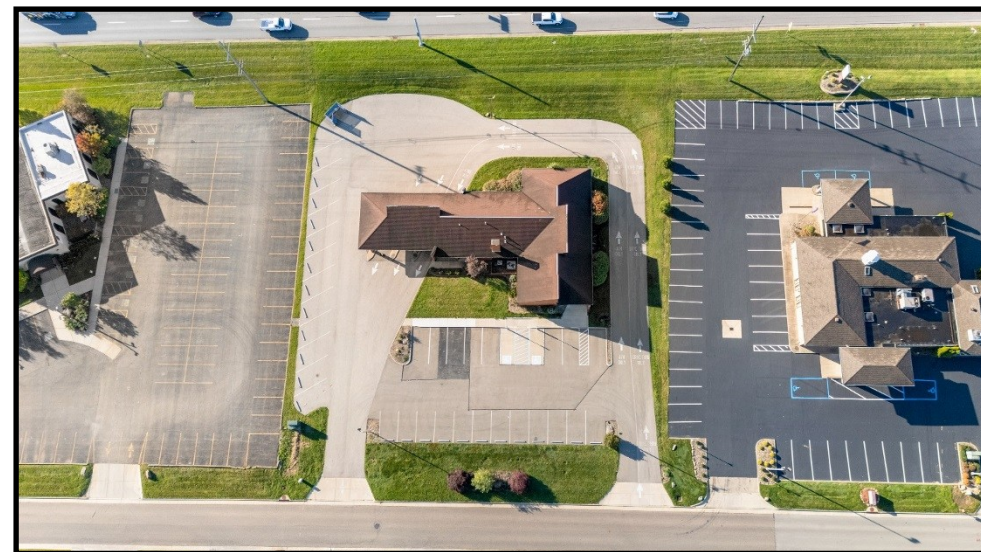
BILL KUTLICK

330.565.5701

bkutlick@platzrealtygroup.com

Office: 330.757.4889 | Fax: 330.294.5622 | 3830 Starr Centre Dr, Suite 2, Canfield, OH 44406

www.PLATZREALTYGROUP.com

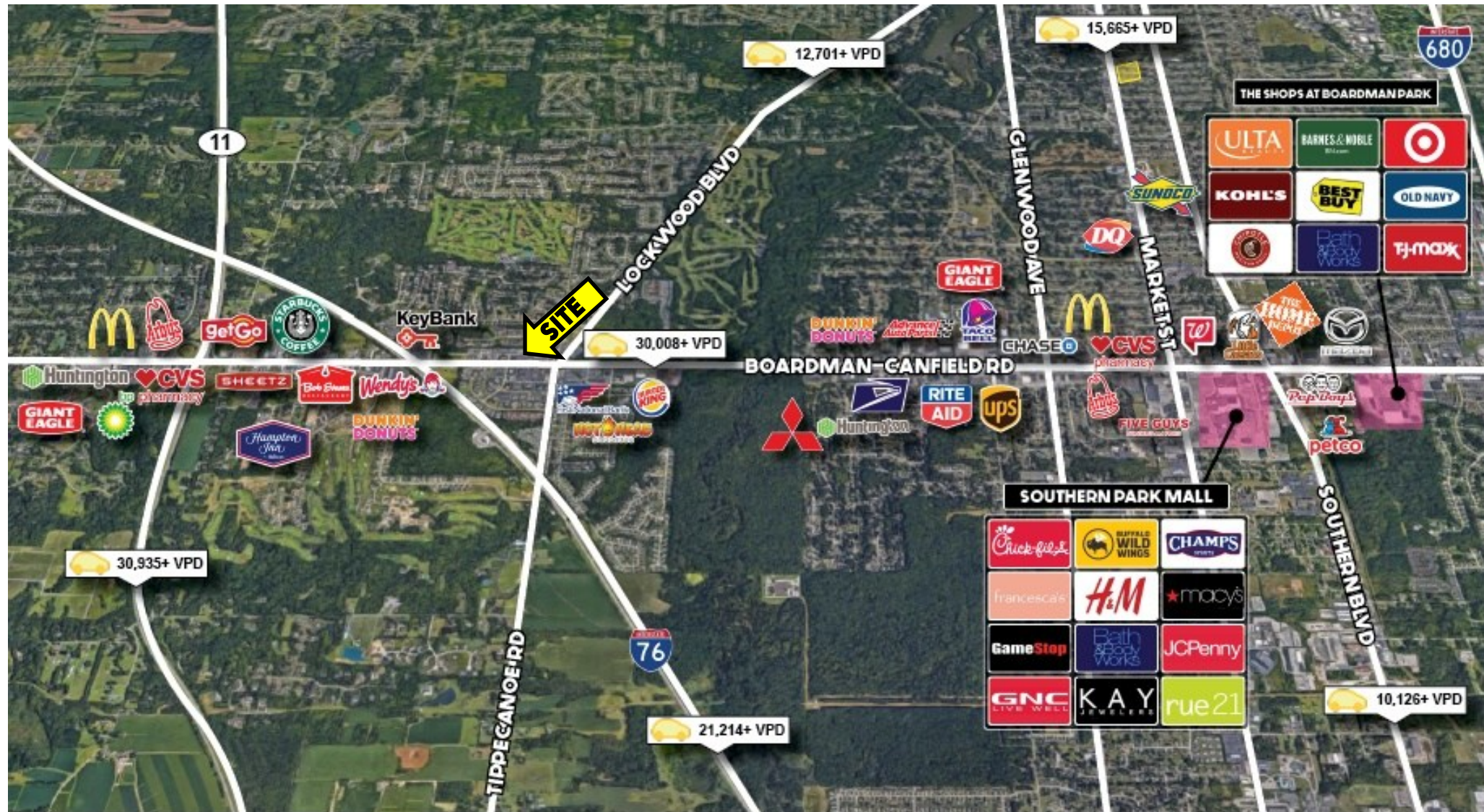


Office: 330.757.4889 | Fax: 330.294.5622 | 3830 Starr Centre Dr, Suite 2, Canfield, OH 44406

www.PLATZREALTYGROUP.com

The information presented was obtained from sources believed to be true and reliable. The Platz Realty Group makes no warranties or guarantees to the accuracy of the information.

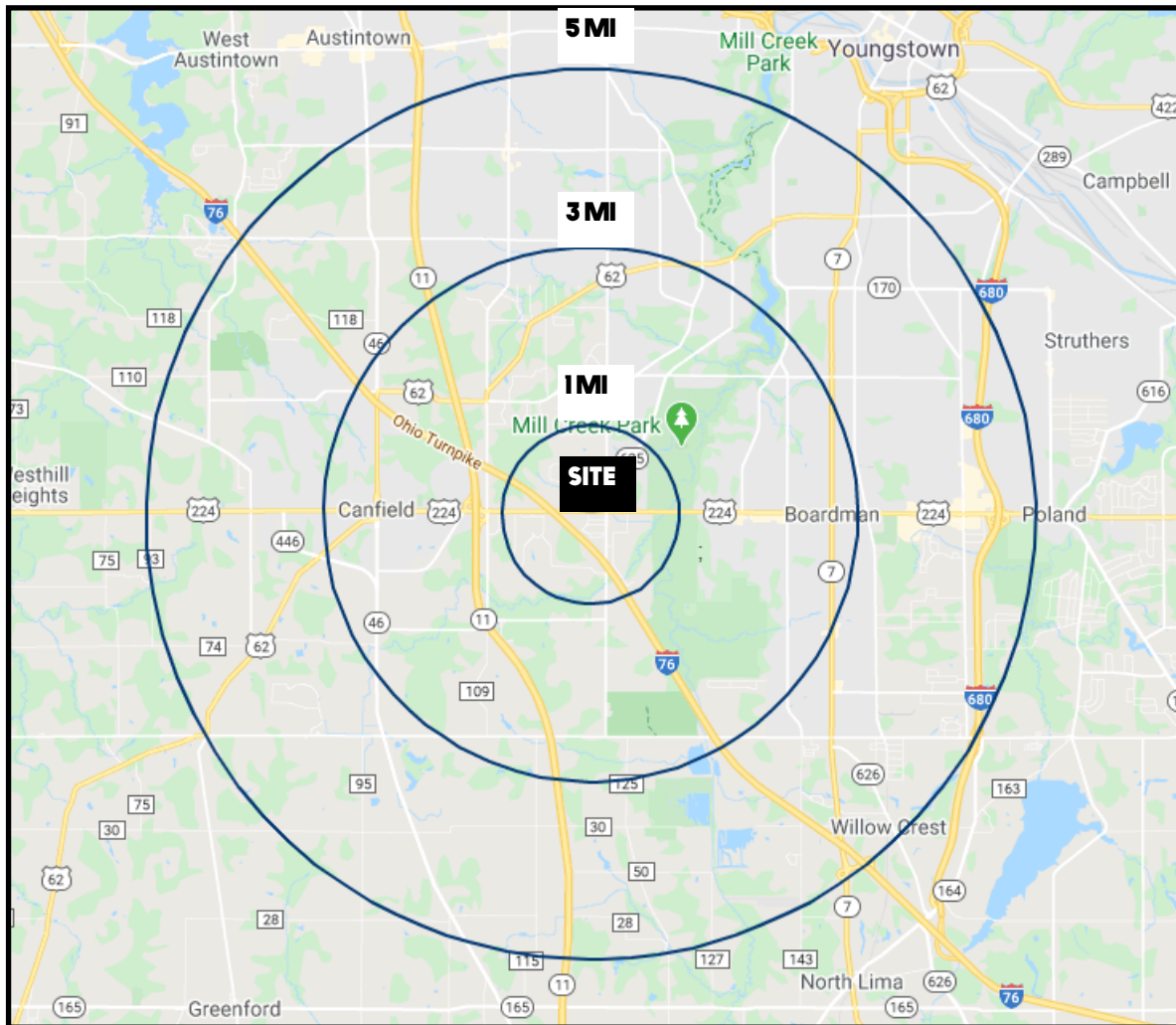




Office: 330.757.4889 | Fax: 330.294.5622 | 3830 Starr Centre Dr, Suite 2, Canfield, OH 44406

www.PLATZREALTYGROUP.com

The information presented was obtained from sources believed to be true and reliable. The Platz Realty Group makes no warranties or guarantees to the accuracy of the information.



DEMOGRAPHICS	1 MI	3 MI	5 MI
POPULATION	5,431	35,280	97,246
HOUSEHOLDS	2,338	15,339	41,599
AVERAGE AGE	42	43	43
MEDIAN HH INCOME	\$78,058	\$68,914	\$54,190

SITE INFORMATION	
LOCATION	Canfield Township Mahoning County
PARCEL	26-065-0-004
SIZE	Available: 3,700 SF Will Subdivide: 1,343 SF
ACREAGE	1 acre
LEASE RATE	Call for lease rate

Office: 330.757.4889 | Fax: 330.294.5622 | 3830 Starr Centre Dr, Suite 2, Canfield, OH 44406

www.PLATZREALTYGROUP.com