

FOR LEASE OR SALE

# 655 MARINERS ISLAND BLVD

Promotional rate of \$2.00 PSF Gross for the 1st year of the lease, then \$2.75 PSF Gross for the remainder of the lease term

SUITE 305A, SAN MATEO, CA

## *Property Highlights*

Located on second floor

±2,000 RSF available

Ideal space for accountants, lawyers, or financial services

Suite includes 5 large private offices with window views, kitchen and conference room

Close to Hwy 92 and US 101

Includes semi-private bathrooms, plenty of parking, storage room, private outside entrance access, air conditioning 24/7, and utilities

New furniture including motorized standup desks

Asking Rent: \$2.75 PSF Gross + utilities

Asking Sales Price: \$1,096,000

**JOE CAMMARATA**

650.678.1228

joe.cammarata@kidder.com

LIC N° 001366451

**ERIC DEBRINE**

650.465.8721

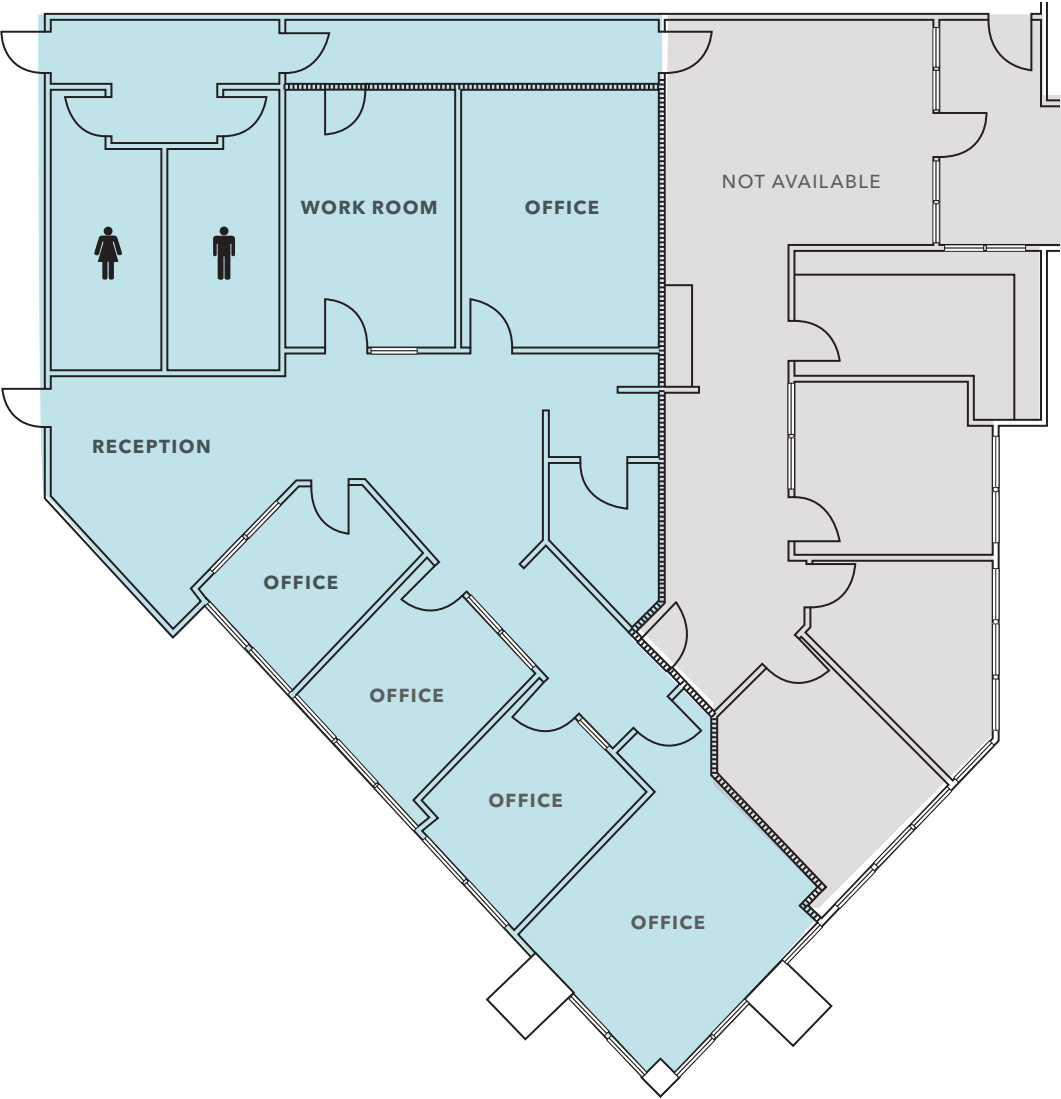
eric.debrine@kidder.com

LIC N° 02192983

KIDDER.COM

This information supplied herein is from sources we deem reliable. It is provided without any representation, warranty, or guarantee, expressed or implied as to its accuracy. Prospective Buyer or Tenant should conduct an independent investigation and verification of all matters deemed to be material, including, but not limited to, statements of income and expenses. Consult your attorney, accountant, or other professional advisor. All Kidder Mathews designs are the sole property of Kidder Mathews. Branded materials and layouts are not authorized for use by any other firm or person.





FLOOR PLAN NOT TO SCALE

KIDDER.COM

This information supplied herein is from sources we deem reliable. It is provided without any representation, warranty, or guarantee, expressed or implied as to its accuracy. Prospective Buyer or Tenant should conduct an independent investigation and verification of all matters deemed to be material, including, but not limited to, statements of income and expenses. Consult your attorney, accountant, or other professional advisor. All Kidder Mathews designs are the sole property of Kidder Mathews. Branded materials and layouts are not authorized for use by any other firm or person.

