

# RETAIL PROPERTY FOR LEASE

## Retail Space For Lease

6519-6591 MIDDLEBELT ROAD  
GARDEN CITY, MI 48135



- › Suite 6573: 800 SF
- › Generous Parking & Frontage
- › Single Suites Can be Combined for 1,800 sf
- › Aggressive Negotiable Terms



**P.A. COMMERCIAL**  
Corporate & Investment Real Estate



### OFFERING SUMMARY

Available SF: 800 SF

Building Size: 9,730 SF

Lease Rate: \$12.00 SF/yr (NNN)

Lot Size: 26,136 SF

### PROPERTY OVERVIEW

This retail strip is located directly across the street from Garden City High School just north of Ford Road and south of Warren Roads. Great visibility on busy Middlebelt Road with over 30,000 VPD. Highly visible and accessible with great frontage.

### PROPERTY HIGHLIGHTS

- Suite 6573: 800 SF
- Generous Parking & Frontage
- Single Suites Can be Combined
- Aggressive Negotiable Terms

**DEVON JACKSON** Senior Associate  
DeVon@pacommercial.com (P) 248.663.0508 (C) 248.568.1488

**PHILLIP J. MYERS** Senior Associate  
phil@pacommercial.com (P) 248.358.0100 x110 (C) 586.242.4047



**P.A. COMMERCIAL**  
Corporate & Investment Real Estate

26555 Evergreen Road, Suite 1500 • Southfield, MI 48076



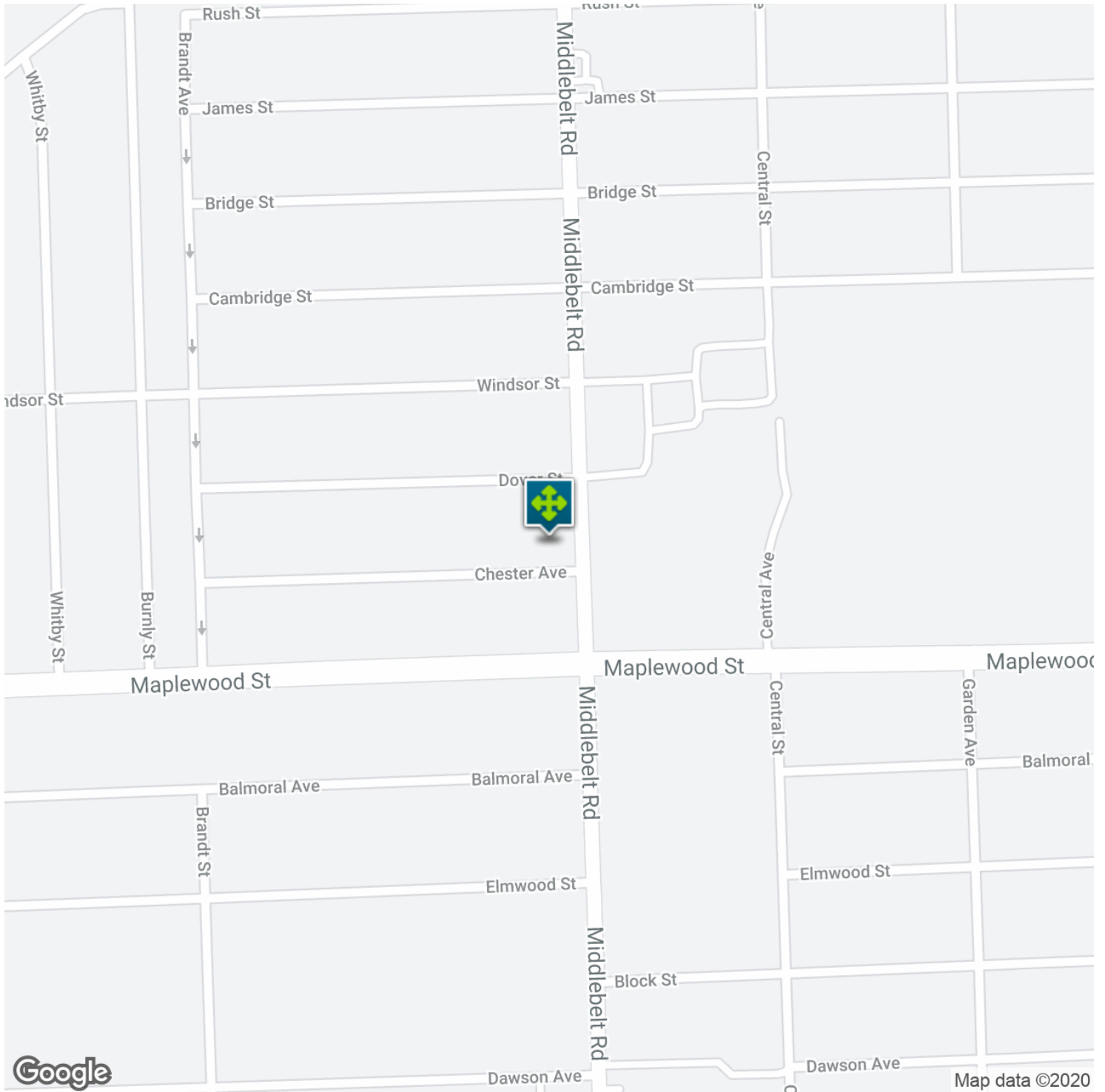
**DEVON JACKSON** Senior Associate  
DeVon@pacommercial.com (P) 248.663.0508 (C) 248.568.1488

**PHILLIP J. MYERS** Senior Associate  
phil@pacommercial.com (P) 248.358.0100 x110 (C) 586.242.4047



**P.A. COMMERCIAL**  
Corporate & Investment Real Estate

26555 Evergreen Road, Suite 1500 • Southfield, MI 48076



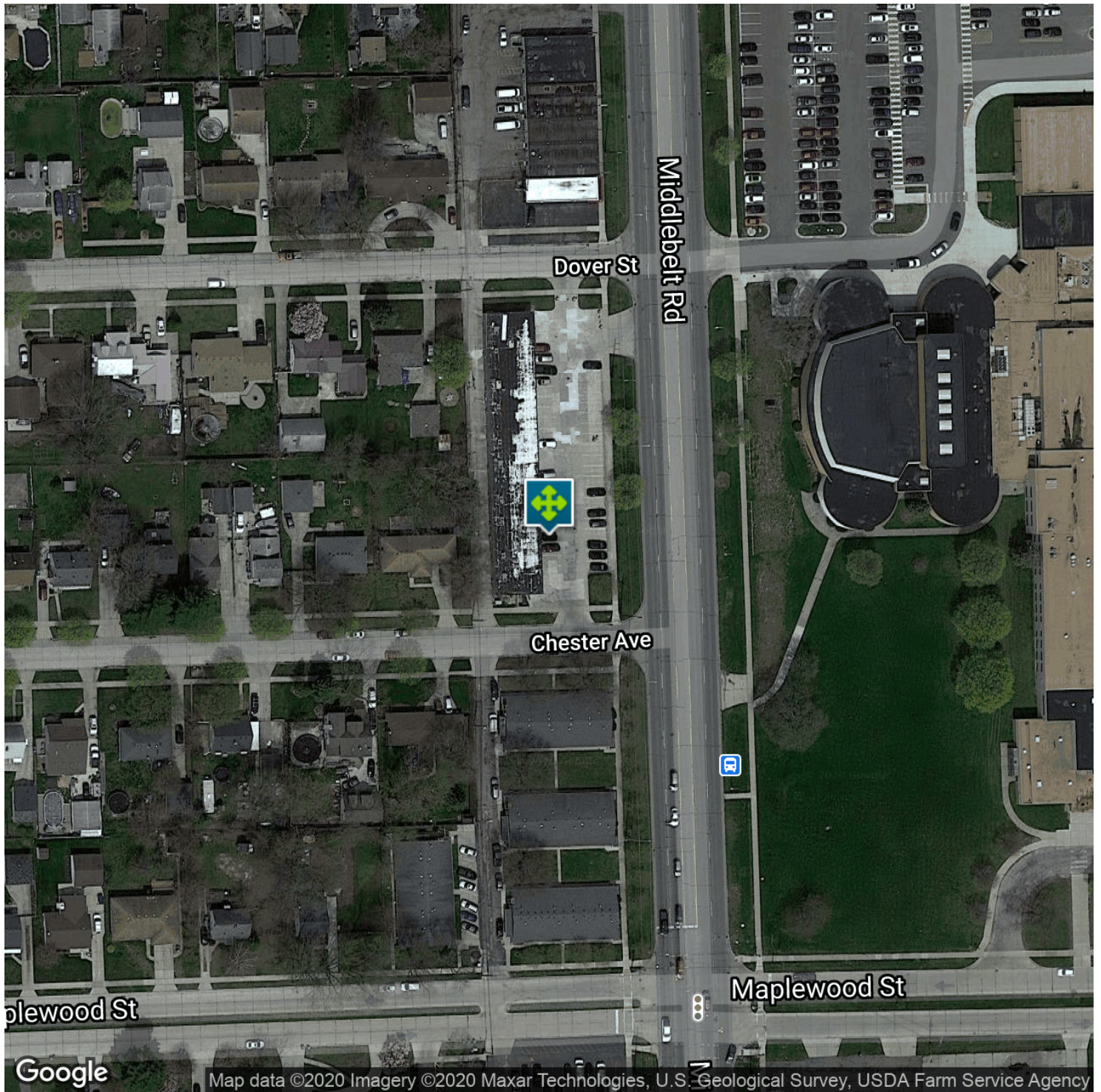
**DEVON JACKSON** Senior Associate  
DeVon@pacommercial.com (P) 248.663.0508 (C) 248.568.1488

**PHILLIP J. MYERS** Senior Associate  
phil@pacommercial.com (P) 248.358.0100 x110 (C) 586.242.4047



**P.A. COMMERCIAL**  
Corporate & Investment Real Estate

26555 Evergreen Road, Suite 1500 • Southfield, MI 48076



**DEVON JACKSON** Senior Associate  
DeVon@pacommercial.com (P) 248.663.0508 (C) 248.568.1488

**PHILLIP J. MYERS** Senior Associate  
phil@pacommercial.com (P) 248.358.0100 x110 (C) 586.242.4047



**P.A. COMMERCIAL**  
Corporate & Investment Real Estate

26555 Evergreen Road, Suite 1500 • Southfield, MI 48076