

23810 W. 83rd Terrace Shawnee, KS 66227

For Sale | \$4,285,000

For Lease | 7,500 - 15,000 SF Available | \$17 PSF + NNN



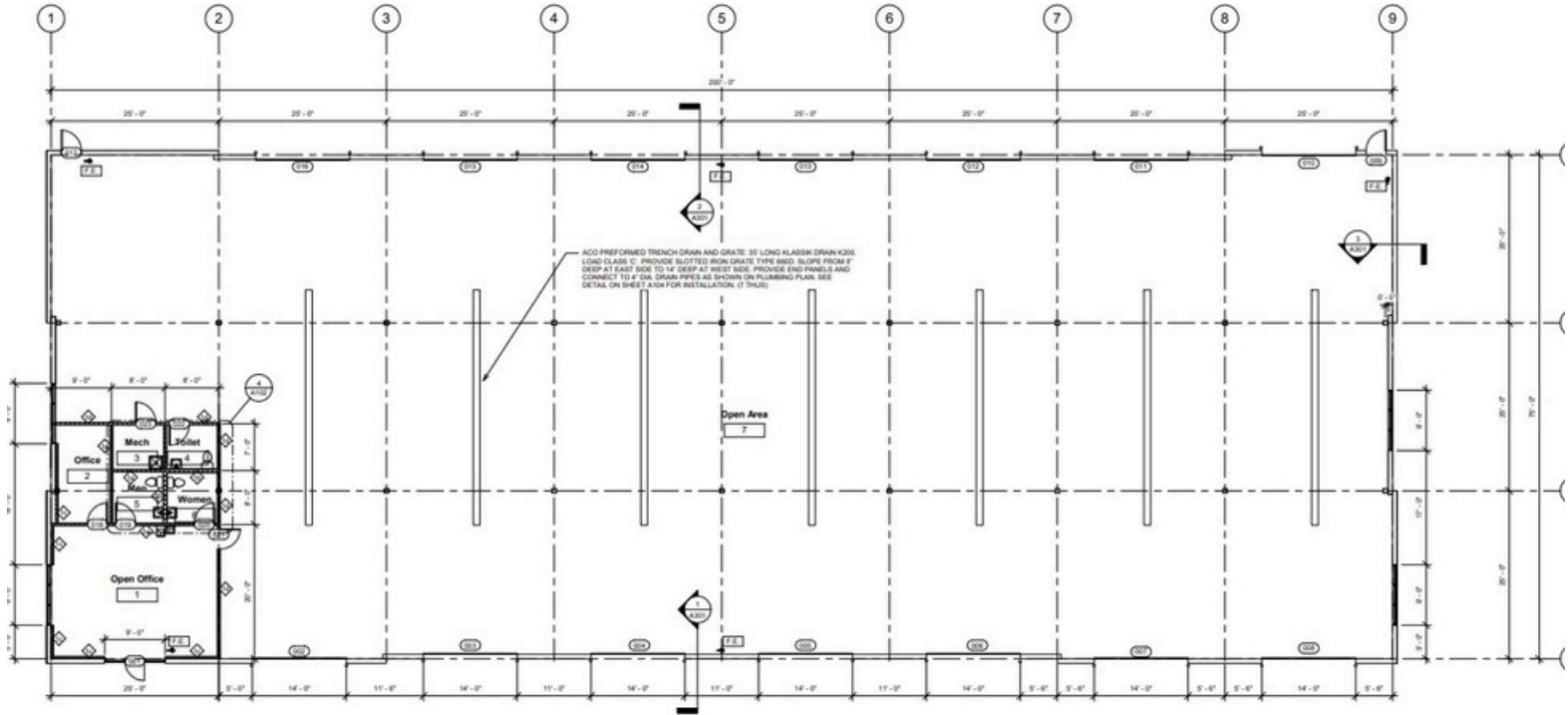
New Construction Truck Service & Maintenance Facility
7 Drive Through Bays



Josh Haith
Josh@Haith.com
O: (913) 888-3456 x 7
www.Haith.com



David Gunter
DGunter@Haith.com
O: (913) 888-3456 x 8
M: (913) 265-8029



- 75' x 200' = 15,000 SF Building Intended Use is a Truck Service Maintenance Facility
- 7 - 14' x 16' Drive Through Bays (14 total drive-in doors)
- 22' Clear Height w/ 24 x 24 Column Spacing
- 1,000 SF Office w/ Common Area + Space for Future Break Room
- 600 AMP, 480 Volt 3-Phase
- 1.75 Acres Well Located in Cul-de-sac Off of 83rd Street
- 3 Bathrooms - 2 in Office, 1 in Shop
- Potential Mezzanine Above Office Area for Additional Storage
- TI Negotiable Based on Credit and Terms
- Built-In Floor Drains to a Water Separator System
- ESFR Fire Protection
- Tilt Up Concrete Construction | New Concrete Pad
- AC & Heat in Office | Radiant Heat in Warehouse
- Exterior Pole & Wall Pack Lighting
- Roof & Parking Lot Drain West to a Parana that Drains to Detention Pond Offsite
- Entire Property Can Be Fenced

23810 W. 83rd Terrace Shawnee, KS 66227
For Sale \$4,285,000 | For Lease \$17 PSF + NNN



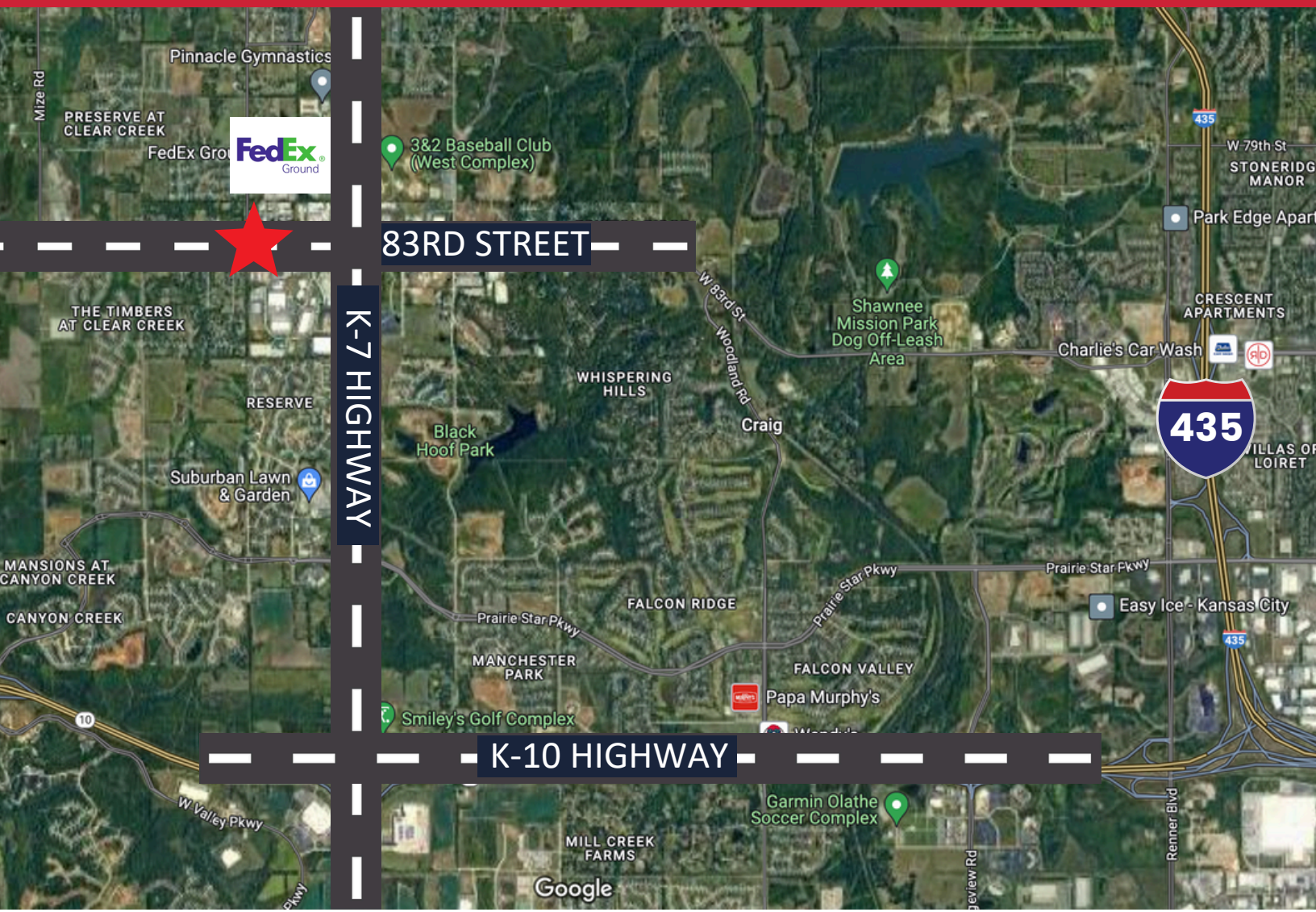
Josh Haith
Josh@Haith.com
O: (913) 888-3456 x 7
www.Haith.com



David Gunter
DGunter@Haith.com
O: (913) 888-3456 x 8
M: (913) 265-8029

23810 W. 83rd Terrace Shawnee, KS 66227

For Sale \$4,285,000 | For Lease \$17 PSF + NNN



Easy Access to K-7 & K10

MCI Airport	37 Miles
De Soto	6 Miles
Downtown KCMO	19 Miles

Josh Haith
Josh@Haith.com
O: (913) 888-3456 x 7
www.Haith.com



David Gunter
DGunter@Haith.com
O: (913) 888-3456 x 8
M: (913) 265-8029