

5101 WEST ADAMS

RETAIL SPACES AVAILABLE

W. Adams
BOULEVARD



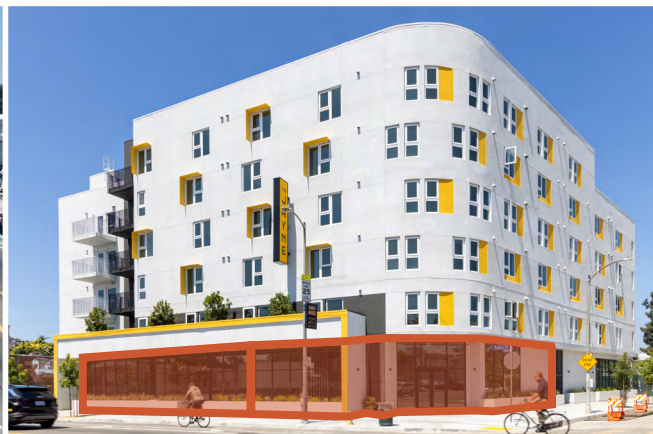
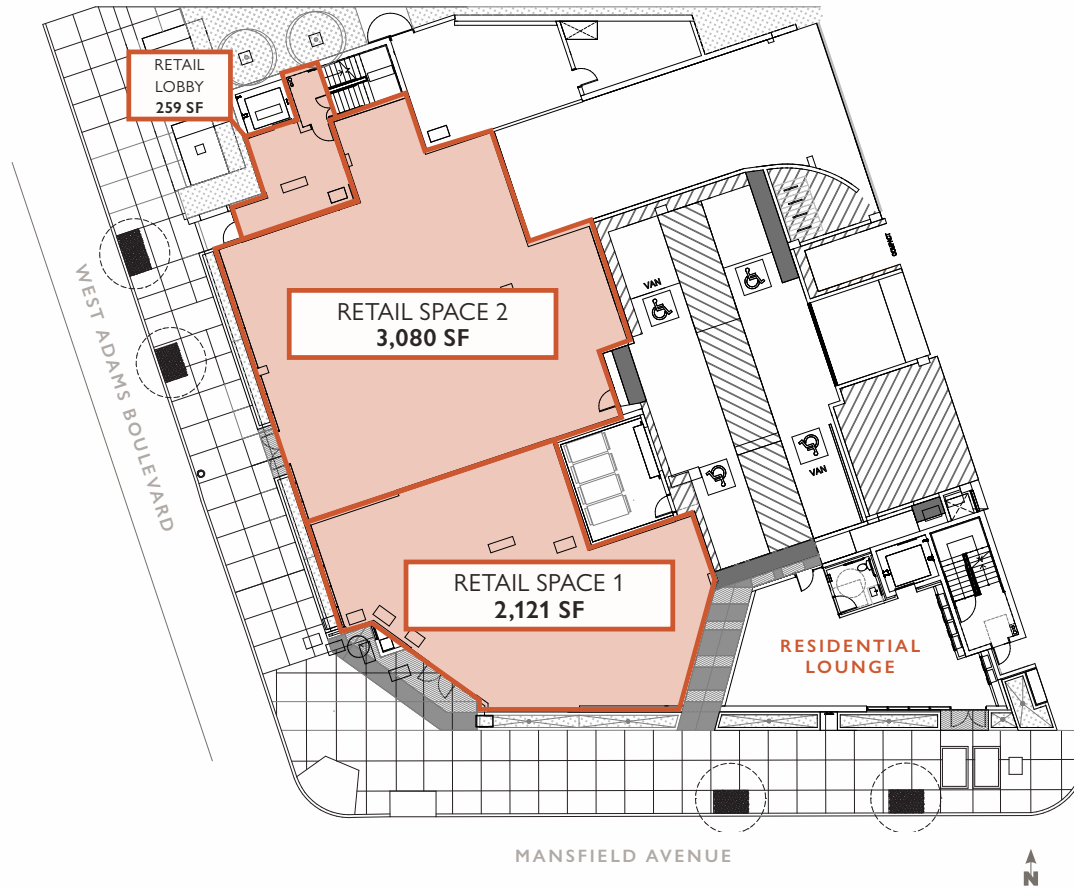
5,000 SF AVAILABLE

The Jayne is a newly constructed six-story, mixed-use multifamily residence, consisting of 69 residential units and 5,000 SF of ground-floor retail. The retail space offers a flexible floor plan divided into two spaces. Located in the West Adams District, the property is in close proximity of the busy intersection, La Brea Avenue and Adams Boulevard.

5101 WEST ADAMS

RETAIL SPACE AVAILABLE

W. Adams
BOULEVARD



AT A PROMINENT
CORNER OF ADAMS BLVD
AND MANSFIELD AVE

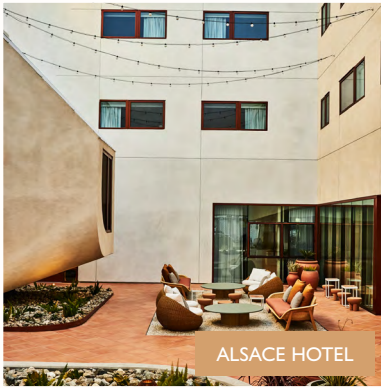
EXCELLENT I-10 FREEWAY
VISIBILITY

WEST ADAMS NEIGHBORHOOD

W. Adams
BOULEVARD



VICKY'S ALL DAY



ALSACE HOTEL



CENTO



FARMHOUSE KITCHEN

24K+

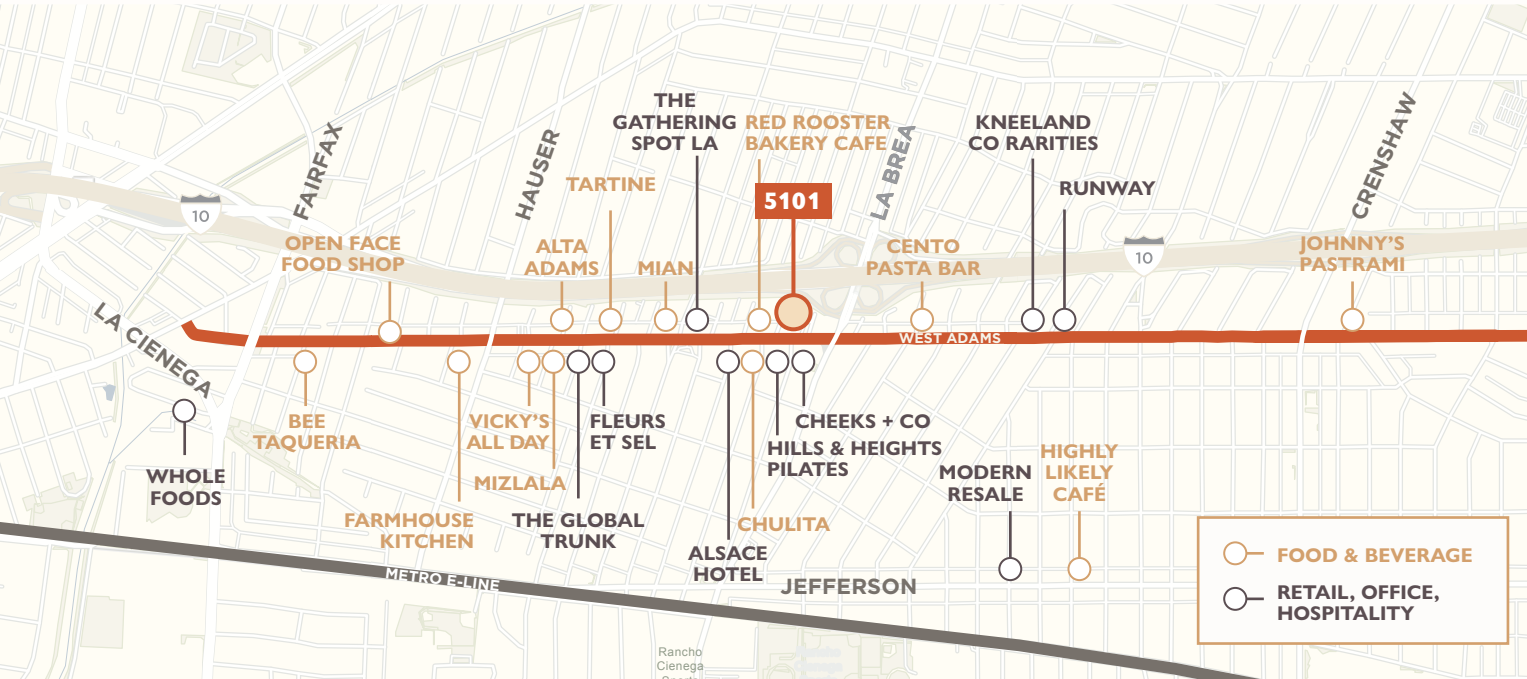
DAILY TRAFFIC COUNT FROM
ADAMS BOULEVARD

1,135,430

2023 POPULATION
WITHIN A 5-MILE RADIUS

464,740

2023 HOUSEHOLDS
WITHIN A 5-MILE RADIUS



FOR RETAIL LEASING INFORMATION:

DAVID ATTAR #01836260
323.860.4939 | dattar@cimgroup.com

SADÉ HOLZ #01962244
323.860.7409 | sholz@cimgroup.com

SHIRELLE KASHANIAN #02154840
310.560.2715 | skashanian@cimgroup.com