

welltower

MEDICAL OFFICE SPACE

FOR LEASE

Virtua Joint Replacement Institute

Health & Wellness Center

Click or Scan Below



For Information:

MATTHEW TOMEIO
Associate, Leasing
856.809.2659
mtomeio@welltower.com

Virtua Voorhees

200 BOWMAN DRIVE | VOORHEES, NJ

medicaloffice.welltower.com

EXECUTIVE SUMMARY

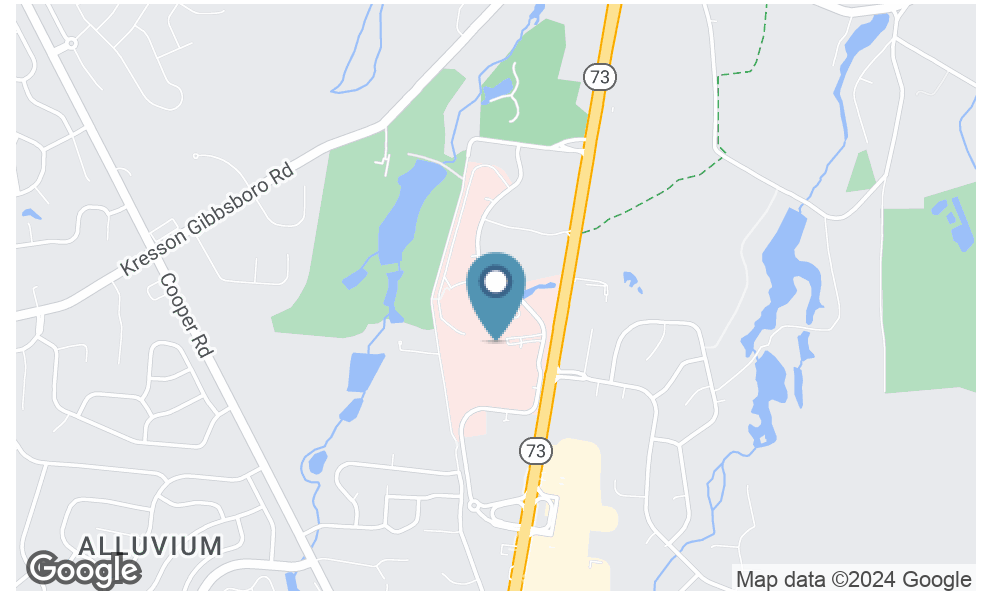


Location Description

Located on the campus of Virtua Voorhees Regional Medical Center in Voorhees, NJ with convenient access from Highway 73.

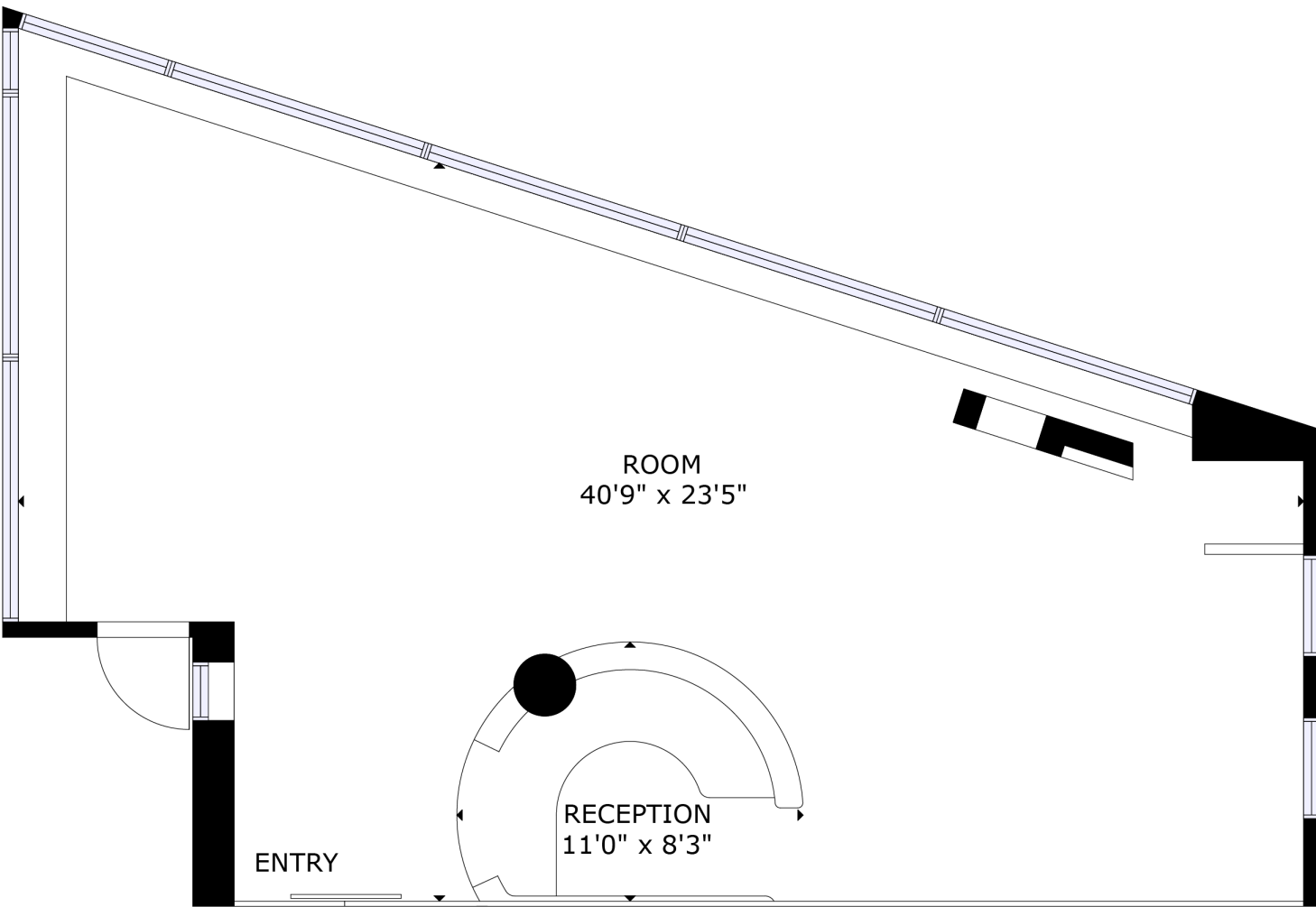
Property Highlights

- Directly connected to Virtua Voorhees Regional Medical Center.
- Current on-site services include: cancer center, surgery center, imaging center, total joint replacement, and multiple physician specialities with consistent referral patterns.
- On-site property management
- Competitive lease rates and terms.



MATTHEW TOMEO
Associate, Leasing
856.809.2659
mtomeo@welltower.com

FLOOR PLANS



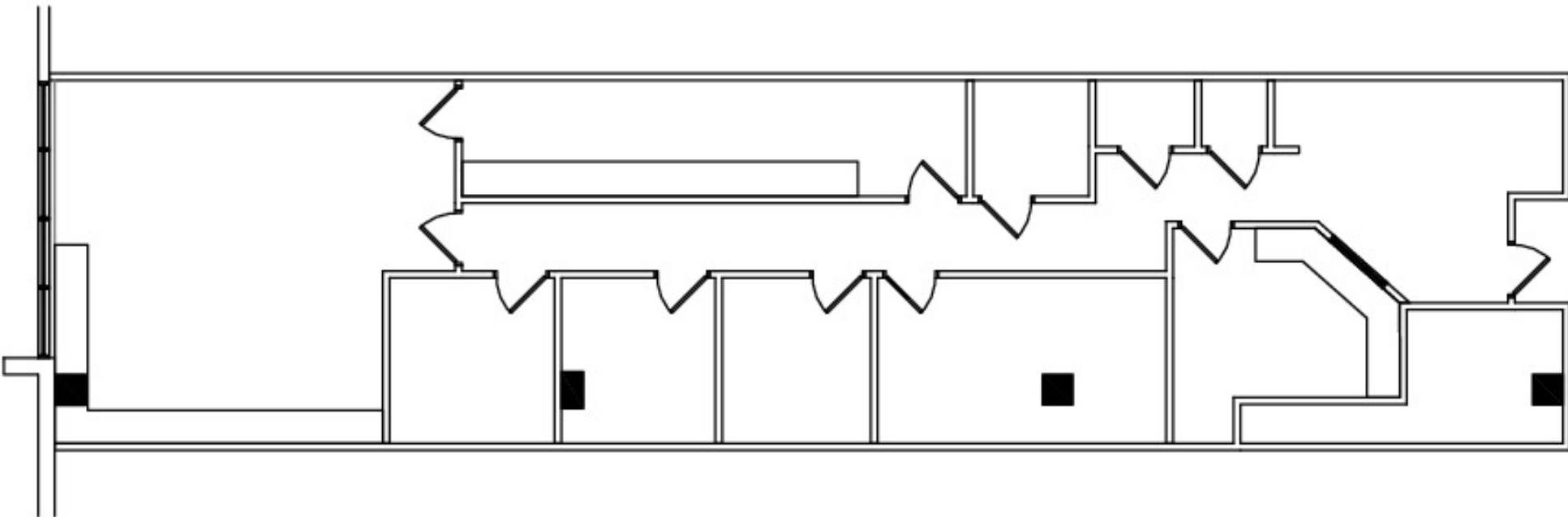
D155

1,007 RSF

MATTHEW TOMEO
Associate, Leasing
856.809.2659
mtomeo@welltower.com



FLOOR PLANS



D279

1,876 RSF

MATTHEW TOMEO
Associate, Leasing
856.809.2659
mtomeo@welltower.com



FLOOR PLANS

welltower



D289 | 1,948 RSF

Conceptual Space Plan

MATTHEW TOMEQ

Associate, Leasing
856.809.2659
mtomeo@welltower.com

DEMOGRAPHICS MAP & REPORT



Population

	1 Mile	3 Miles	5 Miles
Total Population	5,204	48,316	150,355
Average Age	41.7	41.8	40.2
Average Age (Male)	42.1	40.6	38.9
Average Age (Female)	40.1	42.6	41.4

Households & Income

	1 Mile	3 Miles	5 Miles
Total Households	1,651	16,906	55,652
# of Persons per HH	3.2	2.9	2.7
Average HH Income	\$189,285	\$119,201	\$103,880
Average House Value	\$495,029	\$417,364	\$358,056

2020 American Community Survey (ACS)

