

OFFICE SPACE AVAILABLE FOR LEASE



158 NORTH BROADWAY (HISTORIC THIRD WARD)

MILWAUKEE, WI 53202



Leasing Information:

MARIANNE BURISH, MBA

Executive Vice President

C 414.305.3070

E marianne.burish@transwestern.com

310 W. Wisconsin Ave., Ste. ME110

Milwaukee, WI 53203

T 414.225.9700

www.transwestern.com/milwaukee

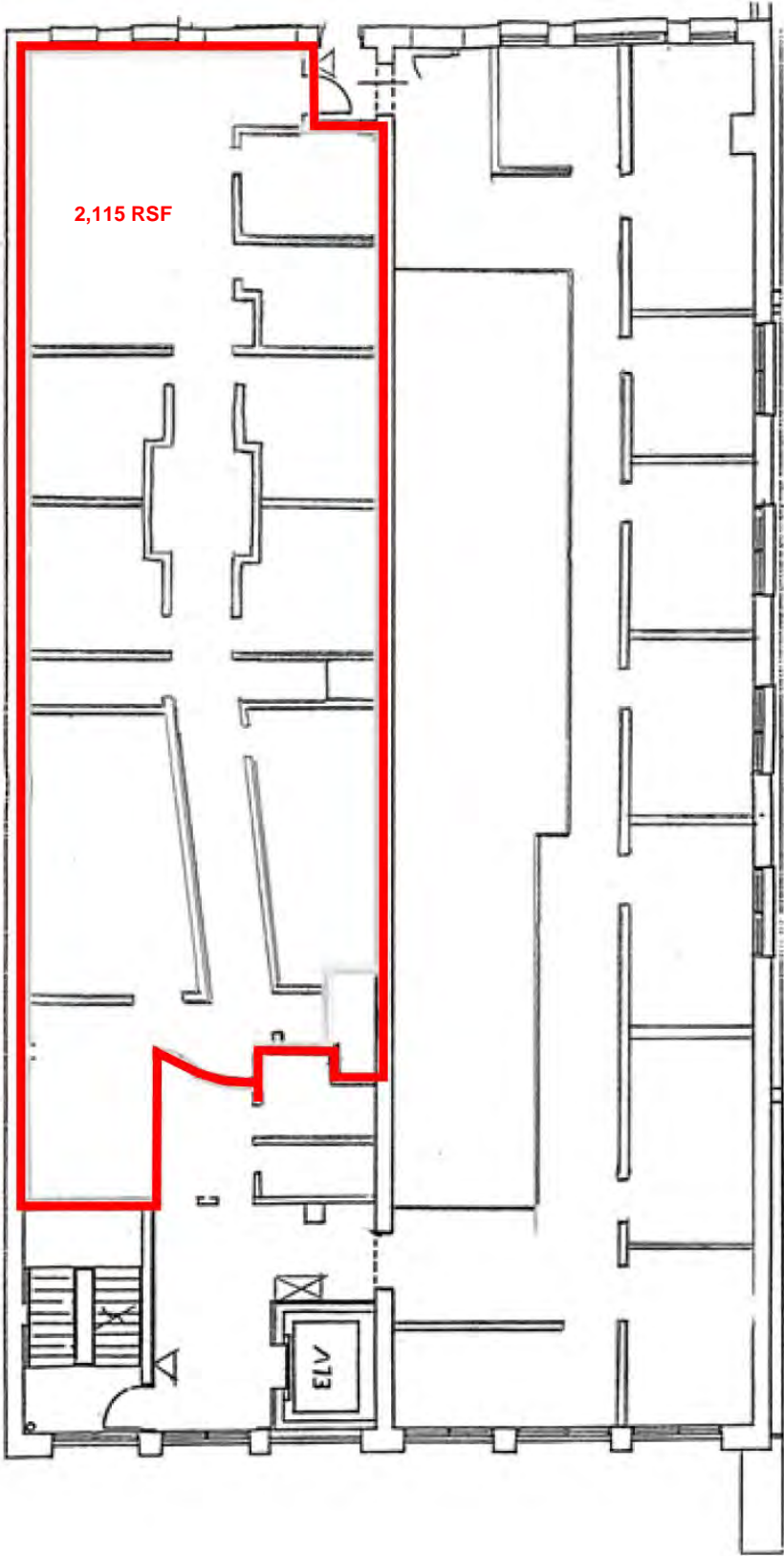
GENERAL INFORMATION

Need a lot of offices in an efficient space in a super-cool building....on Broadway....in the Historic Third Ward? 158 N. Broadway has office space at an affordable price on flexible terms. Check out this beautiful cream city brick and timber frame space located on the top floor offering spacious private offices with unique, upgraded light fixtures, glass panel doors, side panels and transoms offer a chic, yet professional environment that will inspire employees and impress customers. Experience this “on Broadway” loft-style space and amp up your creative juices! Call Marianne Burish today to discuss your space needs or schedule a showing.

Building Size	66,334 SF (per city records)
Available Office Space	6 th floor: ± 2,115 RSF
Occupancy	90 days
Modified Gross Lease Rate	\$3,000/month
Minimum Lease Term	3 years
Real Estate Taxes & Operating Expenses:	Included
Utilities	<ul style="list-style-type: none"> Electricity Payable by Tenant Heating – A/C Included Water & Sewer Included Premises Janitorial Payable by Tenant
Parking	Street & area parking accommodations only

All information is furnished from sources judged to be reliable; however, no guarantee is made as to its accuracy or completeness.

FLOOR PLAN – SIXTH FLOOR

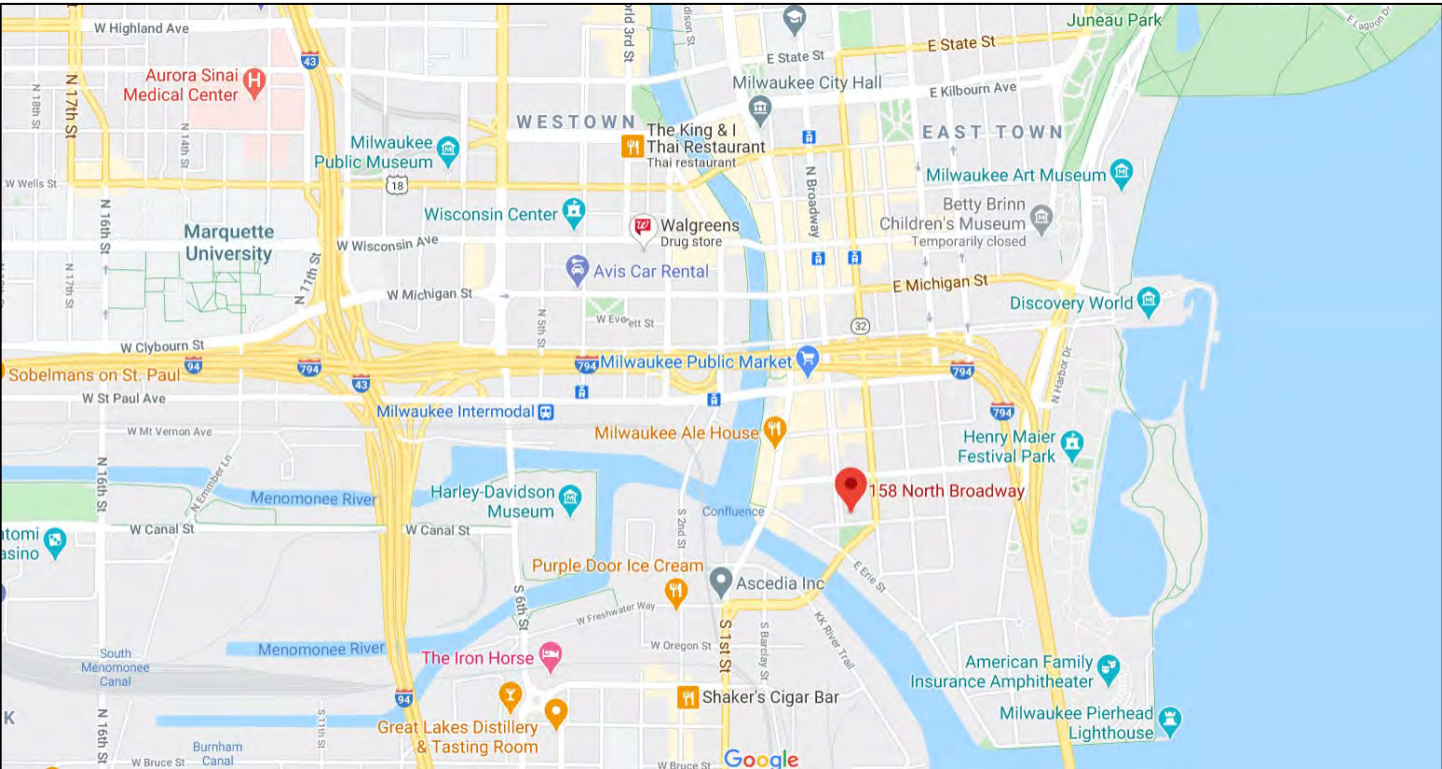


PHOTOGRAPHS – 6th FLOOR – OFFICE SPACE



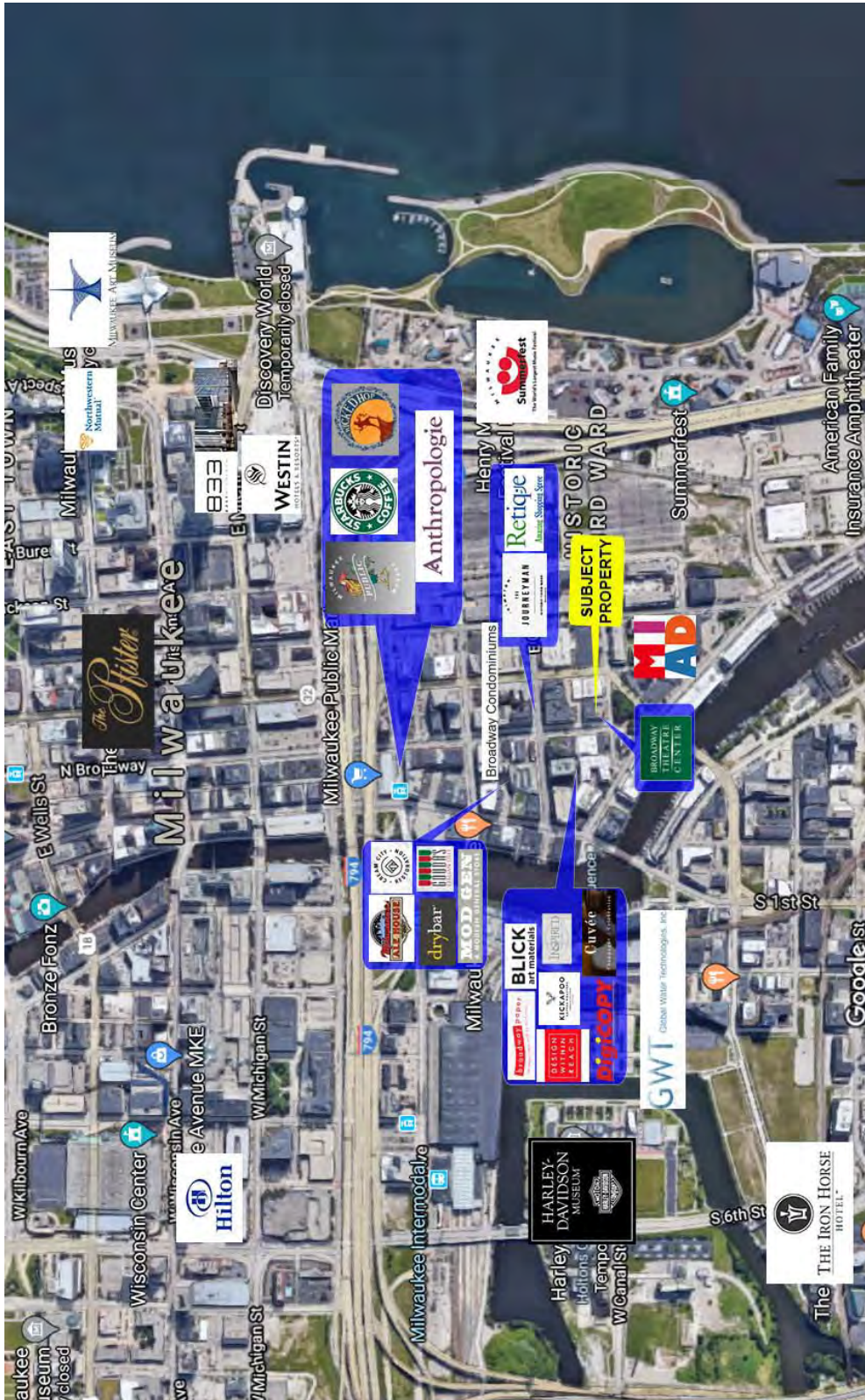
158 NORTH BROADWAY (HISTORIC THIRD WARD)
MILWAUKEE, WI

LOCATION MAP



158 NORTH BROADWAY (HISTORIC THIRD WARD)
MILWAUKEE, WI

AERIAL/RETAILER MAP



158 NORTH BROADWAY (HISTORIC THIRD WARD)
MILWAUKEE, WI

DEMOGRAPHICS - .5 MILES

DEMOGRAPHIC PROFILE

158 N Broadway, Milwaukee, Wisconsin, 53202
Ring of 0.5 miles

Milwaukee

This infographic contains data provided by Esri. The vintage of the data is 2020, 2025.
© 2020 Esri



158 NORTH BROADWAY (HISTORIC THIRD WARD)
MILWAUKEE, WI