



**FOR LEASE**

# Quality Office Space

**8th & Olive Building**  
115 W 8th Avenue  
Eugene OR 97401

## BUILDING DETAILS

- Building is served with EUGNet high speed fiber
- Elevatored, ADA compliant building
- All leases are fully services including utilities and janitorial services
- Convenient Downtown location close to parking, public transit service and many public and private agencies
- \$1.35 per rentable square foot, per month, fully serviced

**Evans  
Elder  
Brown &  
Seubert**

COMMERCIAL REAL ESTATE

## CONTACT

**Stephanie Seubert**  
Stephanie@eebcre.com

**(541) 345-4860**

Licensed in the State of Oregon.

# Suite 200 Floor Plan

8th & Olive Building  
115 West 8th Avenue, Eugene OR 97401

Evans  
Elder  
Brown &  
Seubert

COMMERCIAL REAL ESTATE

## CONTACT

**Stephanie  
Seubert**

stephanie@eebcre.com

**(541) 345-4860**

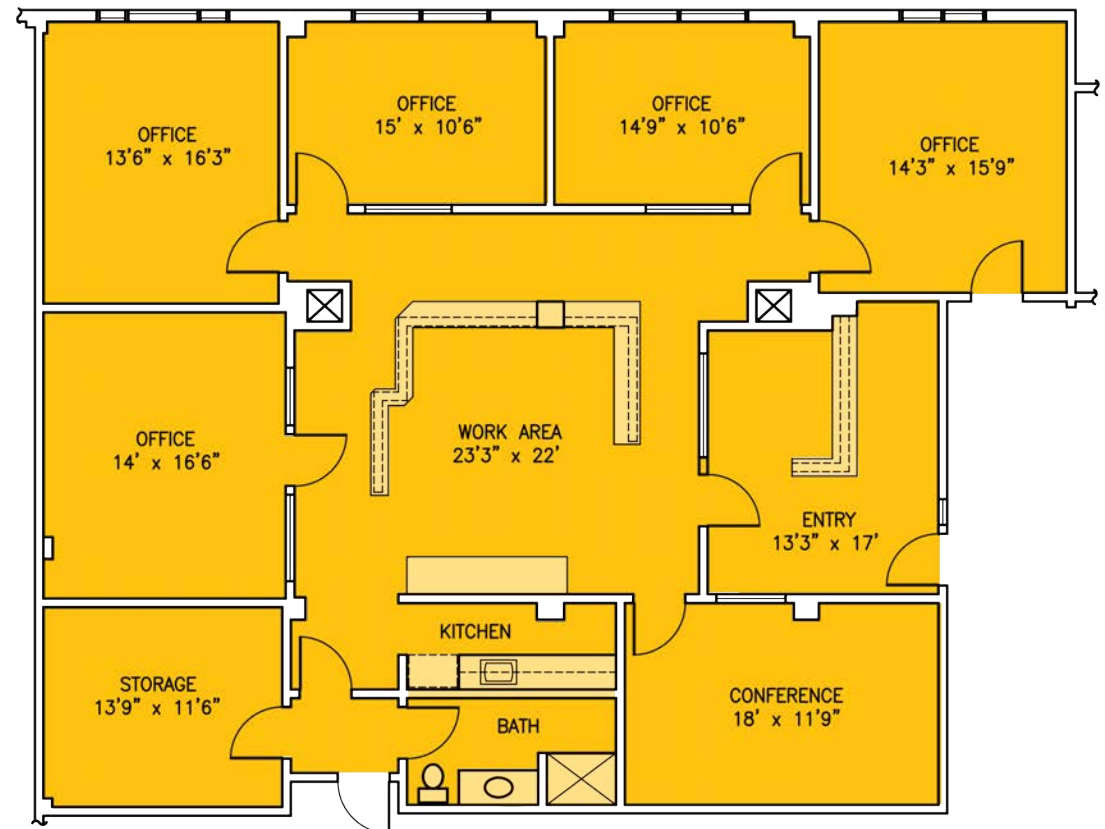
101 East Broadway  
Suite #101  
Eugene, OR 97401

Licensed in the  
State of Oregon.

## Suite 200

### APPROXIMATELY 2,763 RSF

- Available May 1st, 2025
- Space consists of entry/reception area, five private offices, open work area, conference room, private restroom, kitchen and storage room.
- Access to common area restrooms.
- \$1.35 per rentable square foot, per month, fully serviced



DIMENSIONS ARE APPROXIMATE  
SCALE: 1" = 8'  
7/11/2013

# Suite 290/292 Floor Plan

8th & Olive Building  
115 West 8th Avenue, Eugene OR 97401

Evans  
Elder  
Brown &  
Seubert

COMMERCIAL REAL ESTATE

## CONTACT

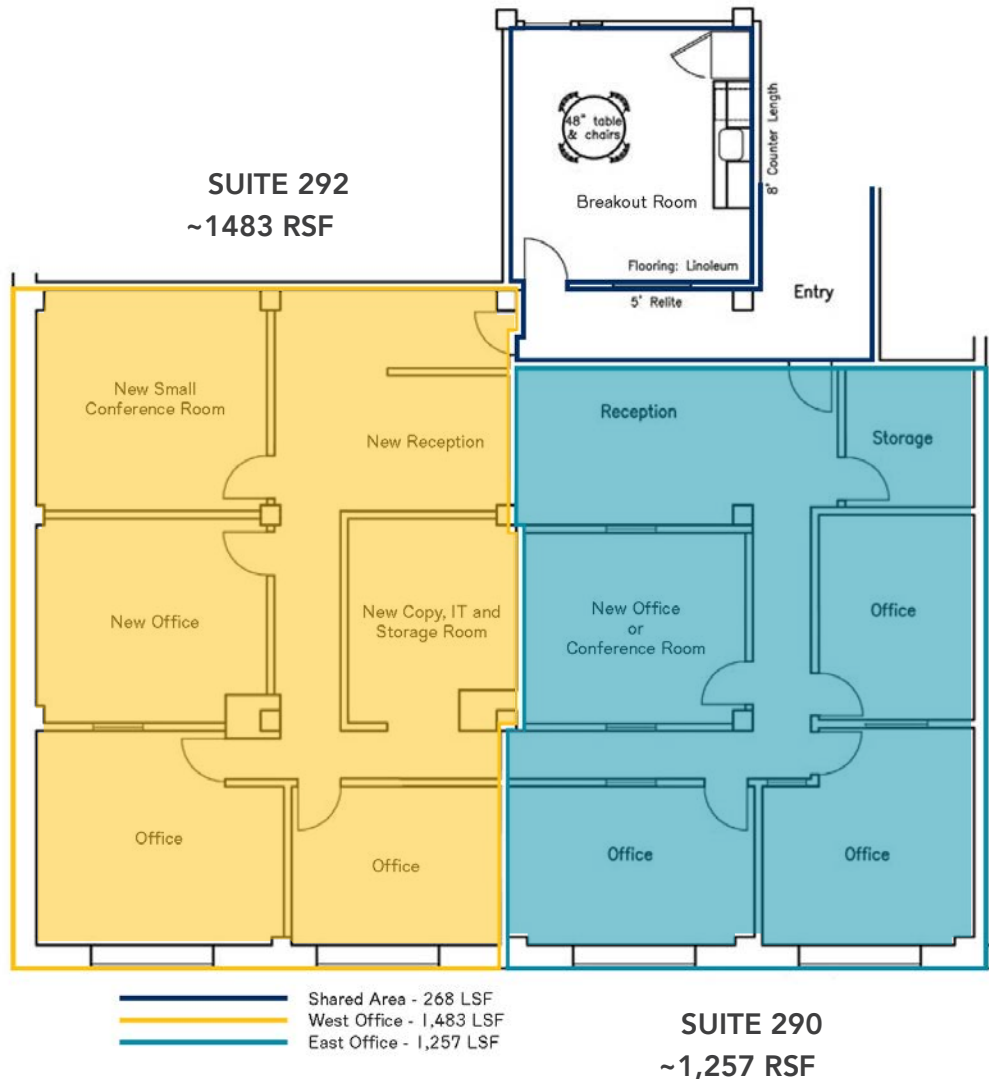
**Stephanie  
Seubert**

stephanie@eebcre.com

**(541) 345-4860**

101 East Broadway  
Suite #101  
Eugene, OR 97401

Licensed in the  
State of Oregon.



## Suite 290/292

**APPROXIMATELY 2,739 TOTAL RSF  
OR DIVIDED: 1,483 RSF & 1,257 RSF**

- Can divide as shown here into 2 Suites: Suite 292: 1,483 rsf & Suite 290: 1,257 rsf
- Modern "tech" space includes open ceiling, natural exposed wood beams and a combination of hardwood floors and carpet
- Current configuration includes one private office with other partitioned areas. Additional offices could be added as shown on this plan.
- Shared kitchenette/break room could be added with build-out
- South facing windows provide good natural light
- Access to common area restrooms
- \$1.35 per rentable square foot, per month, fully serviced

# Suite 360 Floor Plan

8th & Olive Building  
115 West 8th Avenue, Eugene OR 97401

Evans  
Elder  
Brown &  
Seubert

COMMERCIAL REAL ESTATE

## CONTACT

**Stephanie  
Seubert**

stephanie@eebcre.com

**(541) 345-4860**

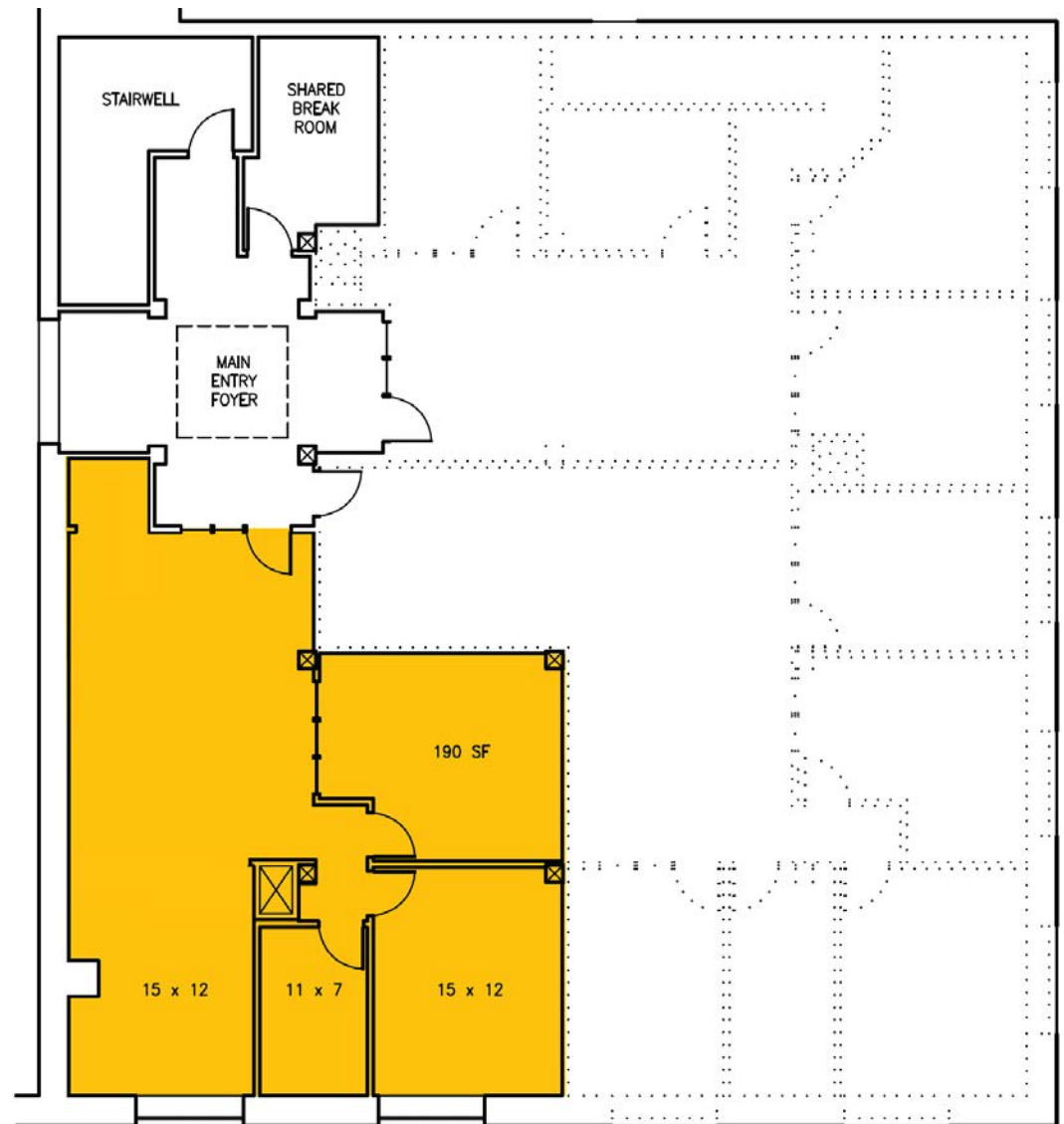
101 East Broadway  
Suite #101  
Eugene, OR 97401

Licensed in the  
State of Oregon.

## Suite 360

### APPROXIMATELY 1,362 RSF

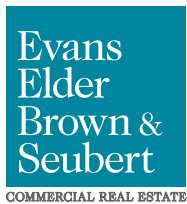
- Space consists of reception area/ open work space, two large offices and a storage/IT room
- Access to common area restrooms and break room with sink
- \$1.35 per rentable square foot, per month, fully serviced





# Location

8th & Olive Building  
115 West 8th Avenue, Eugene OR 97401



## CONTACT

**Stephanie Seubert**

stephanie@eebcre.com

**(541) 345-4860**