



## Hwy 395 & Eucalyptus St

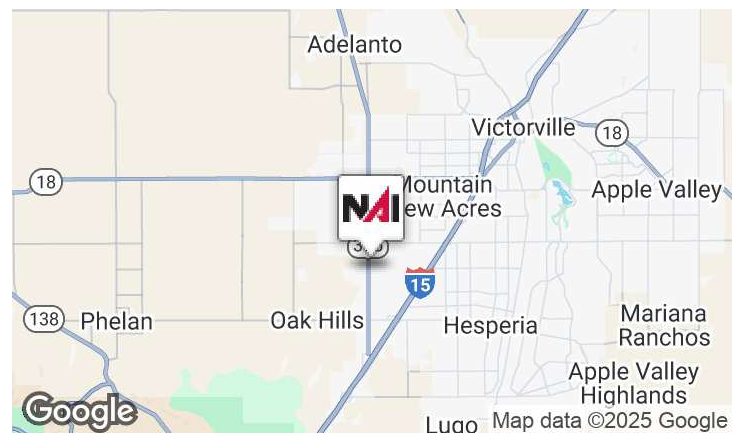
Victorville, California 92392

### Property Highlights

- ASKING: \$2,900,000
- SIZE: ± 21.38 Acres
- APN: 3136-281-01,02
- ZONING: General Commercial (C-2)

### Property Description

- Signalized commercial corner lot on a major thoroughfare
- Water, Sewer, and Power available at site
- Adjacent neighborhood with hundreds of recently completed homes
- More than 25,000 Average Daily Traffic Counts



### For More Information

**Mehdi Mostaedi, ALC**

O: 760 780 4210

mmostaedi@naicapital.com | CalDRE #01392527

**Jonathan Pollak**

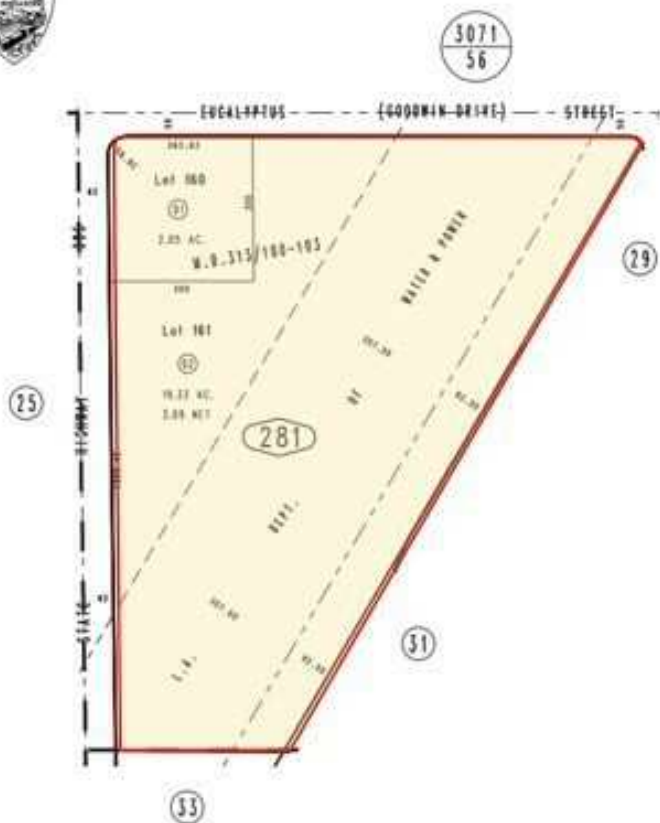
O: 760 780 4217

jpollak@naicapital.com | CalDRE #02106603

Tract No. 16887-1, M.B. 313/100-103

City of Victorville 3136 - 28  
Tax Rate Area  
12167

THIS MAP IS FOR THE PURPOSE  
OF AD VALOREM TAXATION ONLY.



Pin. N.W.1/4, Sec. 10  
T.4N., R.5W.

Assessor's Map  
Book 3136 Page 28  
San Bernardino County

REVISED