



# FALCON PLAZA

10052-10098 WOODLAND RD, LENEXA, KS 66220

## FOR LEASE

- » **WESTLAKE HARDWARE IS OPEN!**
- » 1,257 SF - 3,761 SF of Retail/Office Space Available
- » Join CVS, Blue Moose, Casey's Convenience Store, El Toro Loco, etc.
- » Significant Traffic Generated From K-10 & Neighboring Price Chopper
- » Median HHI - \$123,000 Within 1 Mile
- » 7.18% Estimated Household Growth From 2019-2023
- » \$17.50/SF NNN

---

### RYAN SCHULTEIS

Brokerage Associate

913.945.3741

ryans@reececommercial.com

### JOHN SWEENEY, CCIM

Senior Broker Associate

913.945.3718

john@reececommercial.com



**REECE**  
COMMERCIAL REAL ESTATE

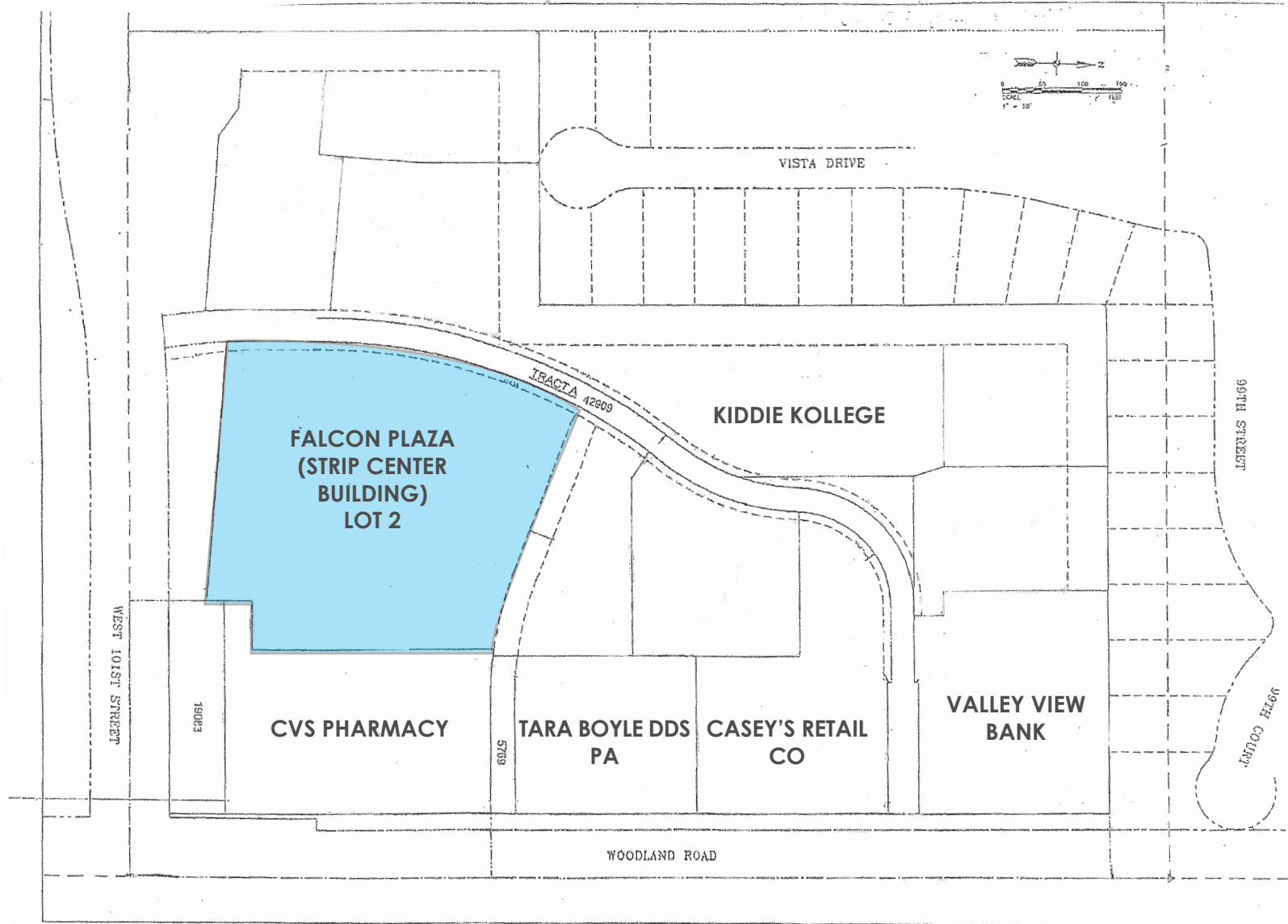
a Berkshire Hathaway Affiliate

# FALCON PLAZA

## MAPS



The information in this package has been obtained from sources believed reliable. While we do not doubt its accuracy we have not verified it and make no guarantee, warranty or representation about it. It is your responsibility to independently confirm its accuracy and completeness. Any projections, opinions, assumptions, or estimates used are for example only and do not represent the current or future performance of the property. You and your advisors should conduct a careful, independent investigation of the property to determine to your satisfaction the suitability of the property for your needs. © 2019

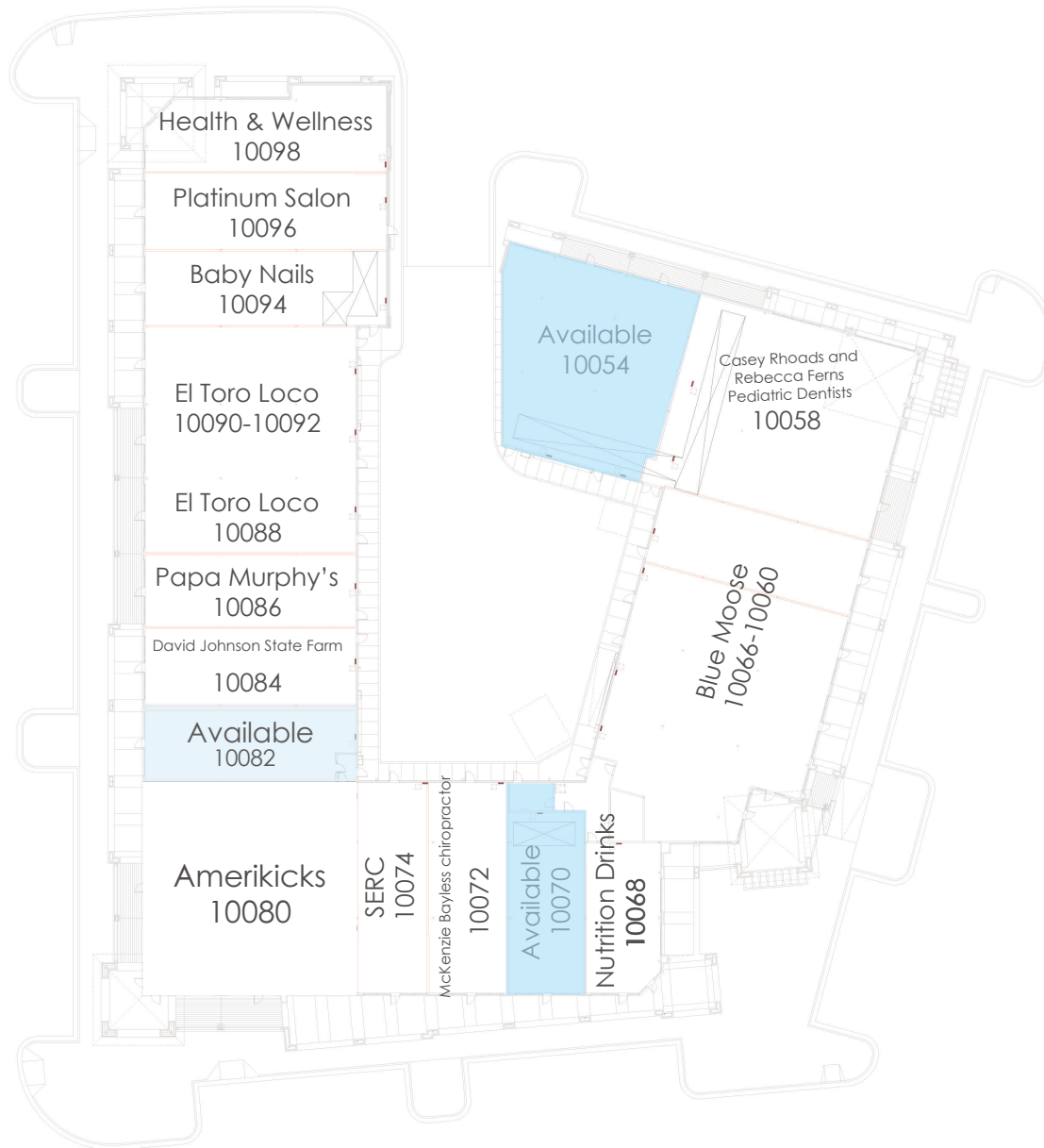


The information in this package has been obtained from sources believed reliable. While we do not doubt its accuracy we have not verified it and make no guarantee, warranty or representation about it. It is your responsibility to independently confirm its accuracy and completeness. Any projections, opinions, assumptions, or estimates used are for example only and do not represent the current or future performance of the property. You and your advisors should conduct a careful, independent investigation of the property to determine to your satisfaction the suitability of the property for your needs.



# SITE PLAN & AVAILABLE

## MAPS



### AVAILABLE SUITES

SUITE	SF
10070	1,510
10054	1,534-3,761
10082	1,688

The information in this package has been obtained from sources believed reliable. While we do not doubt its accuracy we have not verified it and make no guarantee, warranty or representation about it. It is your responsibility to independently confirm its accuracy and completeness. Any projections, opinions, assumptions, or estimates used are for example only and do not represent the current or future performance of the property. You and your advisors should conduct a careful, independent investigation of the property to determine to your satisfaction the suitability of the property for your needs.



10052-10098 WOODLAND RD,

PHOTOS



The information in this package has been obtained from sources believed reliable. While we do not doubt its accuracy we have not verified it and make no guarantee, warranty or representation about it. It is your responsibility to independently confirm its accuracy and completeness. Any projections, opinions, assumptions, or estimates used are for example only and do not represent the current or future performance of the property. You and your advisors should conduct a careful, independent investigation of the property to determine to your satisfaction the suitability of the property for your needs.



# GROWING RETAIL K-10 COR-

# RETAIL MAP



**AD-** |  
 101st St & Woodland Rd, Lenexa, KS

**TRAFFIC** |  
 59,500 Vehicles/day on K-10

**HOUSE-** |  
 12,019 - 3 Miles

The information in this package has been obtained from sources believed reliable. While we do not doubt its accuracy we have not verified it and make no guarantee, warranty or representation about it. It is your responsibility to independently confirm its accuracy and completeness. Any projections, opinions, assumptions, or estimates used are for example only and do not represent the current or future performance of the property. You and your advisors should conduct a careful, independent investigation of the property to determine to your satisfaction the suitability of the property for your needs.

