

1830

Redondo Ave

SIGNAL HILL, CA

1,200 SF
RETAIL FOR LEASE



CBRE

REDONDO AVE (24,900 VPD)

HIGHLIGHTS



HIGH TRAFFIC COUNTS & EXCELLENT VISIBILITY

36,800 VPD on Pacific Coast Highway | 24,900 VPD on Redondo Avenue



CIVIC, HEALTHCARE & INDUSTRIAL FACILITIES

Near Browning High, USPS, DMV, National Guard, Kaiser Permanente, and Business Parks.



PROXIMITY TO AMENITIES

Surrounded by; a mix of residential, commercial, and retail amenities, providing a convenient and attractive destination for shoppers.

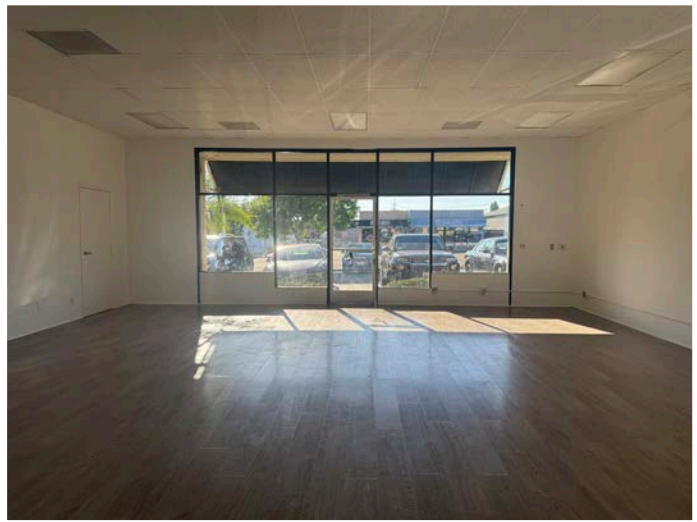


EASY ACCESS

Conveniently accessible with ample parking and excellent street access.



REDONDO AVE 24,900 VPD



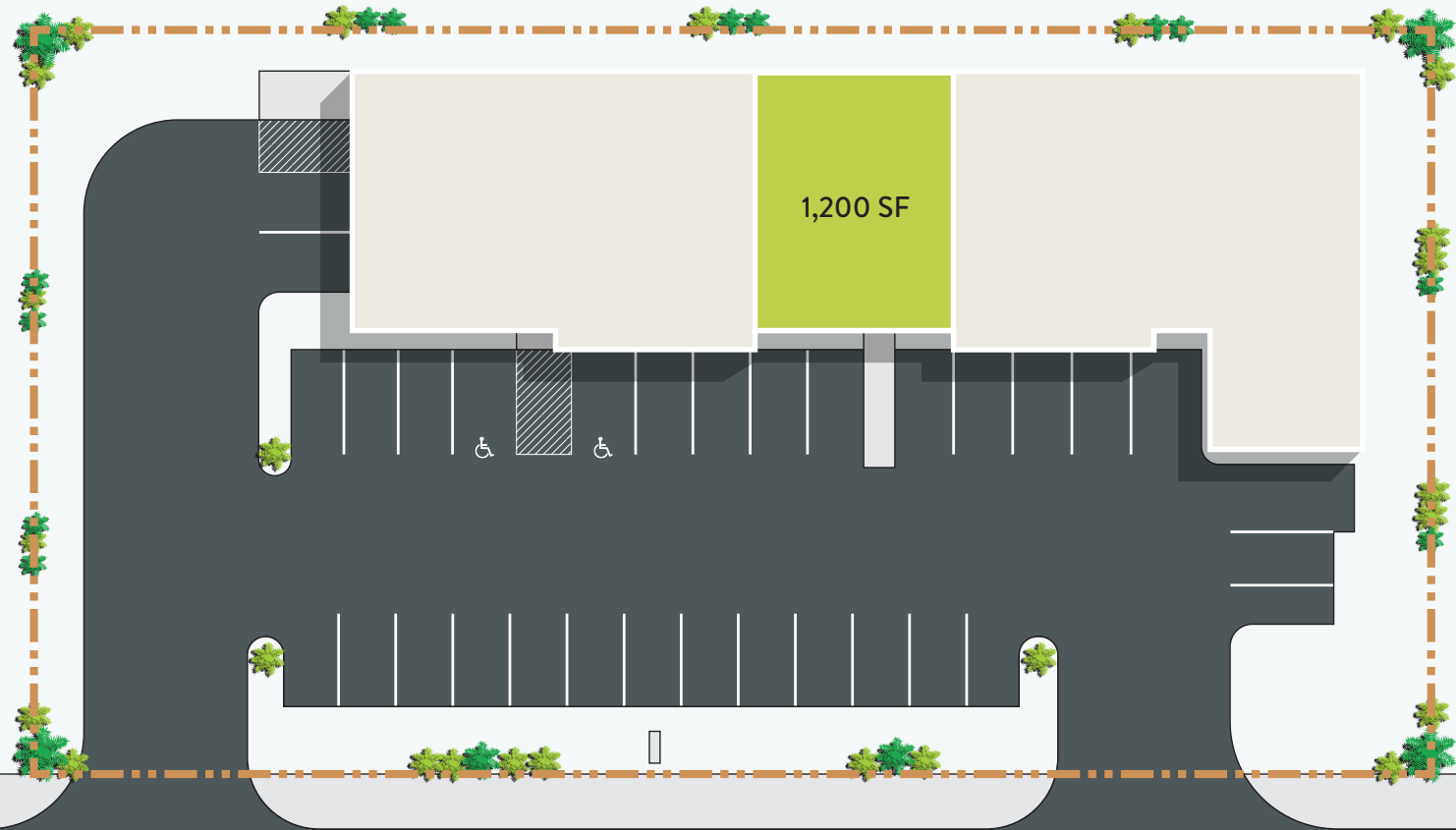
1830
Redondo Ave
SIGNAL HILL, CA



REDONDO AVE 24,900 VPD

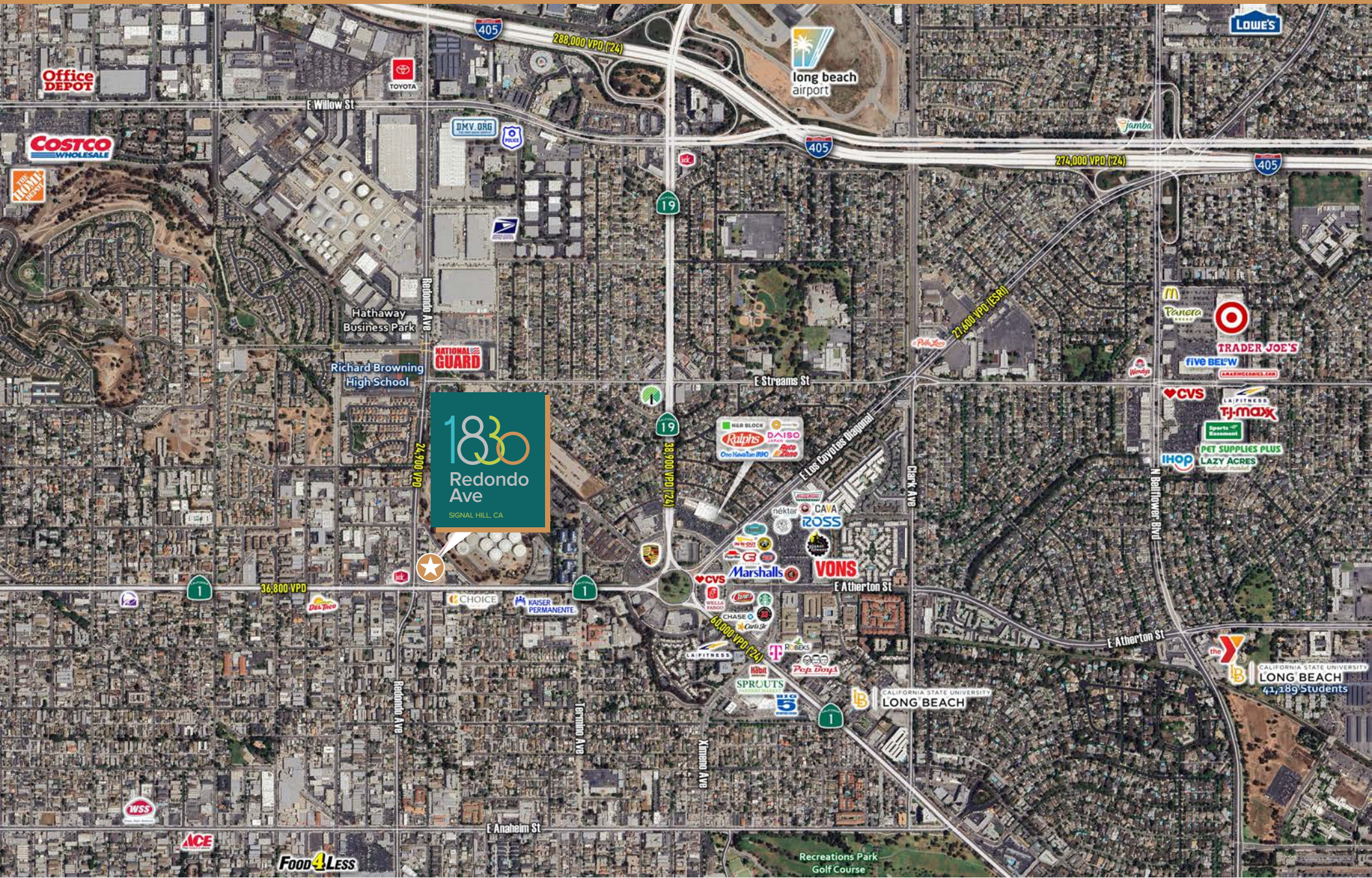
PACIFIC COAST HWY 36,800 VPD

SITE PLAN



REDONDO AVE

RETAILERS IN THE AREA



WELCOME TO SIGNAL HILL

Signal Hill, California, is a unique and vibrant city nestled atop a prominent hill overlooking Long Beach. Known for its stunning panoramic views, Signal Hill offers a desirable blend of residential charm and commercial activity. Its strategic location provides easy access to major freeways, making it a convenient hub for both businesses and residents. The city boasts a strong sense of community, a thriving local economy, and a commitment to fostering a business-friendly environment, making it an attractive destination for entrepreneurs and families alike.

	1 Mile	3 Miles	5 Miles
Population	43,958	274,645	497,821
Households	17,590	114,526	196,418
Daytime Employees	15,734	144,850	249,611
Average Household Income	\$103,760	\$114,777	\$123,339





1830

Redondo
Ave

SIGNAL HILL, CA

FOR MORE INFORMATION, PLEASE CONTACT

Pablo Rodriguez

First Vice President

+1 909 418 2041

Lic. 01870757

pablo.rodriguez1@cbre.com

Conner Tolliver

Associate

+1 909 418 2090

Lic. 02187079

conner.tolliver@cbre.com

Cristian Goodson

Associate

+1 310-569-2914

Lic. 01982883

cristian.goodson@cbre.com

CBRE

© 2025 CBRE, Inc. All rights reserved. This information has been obtained from sources believed reliable but has not been verified for accuracy or completeness. CBRE, Inc. makes no guarantee, representation or warranty and accepts no responsibility or liability as to the accuracy, completeness, or reliability of the information contained herein. You should conduct a careful, independent investigation of the property and verify all information. Any reliance on this information is solely at your own risk. CBRE and the CBRE logo are service marks of CBRE, Inc. All other marks displayed on this document are the property of their respective owners, and the use of such marks does not imply any affiliation with or endorsement of CBRE. Photos herein are the property of their respective owners. Use of these images without the express written consent of the owner is prohibited.