

# 601

E ARRELLAGA  
SANTA BARBARA, CA

**FOR LEASE**



CHRISTI VIOR  
cvior@lee-associates.com  
D 805.895.8765  
CalDRE: #0803953



JIM TURNER  
jturner@JTrealestategroup.com  
D 805.724.0557  
CalDRE: #00970829



All information furnished regarding property for sale, rental or financing is from sources deemed reliable, but no warranty or representation is made to the accuracy thereof and same is submitted to errors, omissions, change of price, rental or other conditions prior to sale, lease or financing or withdrawal without notice. No liability of any kind is to be imposed on the broker herein.



# 601 E ARRELLAGA, SUITE 203 | FOR LEASE

## PROPERTY OVERVIEW

This office suite is well located near down town Santa Barbara in Upper East. Ideal for dentist or medical practice, but suitable for general office. Available January 2026, but could be available sooner, please call Christi Vior or Jim Turner for an appointment to view, need 24 hour notice.

## AVAILABLE SF

±1,200 sq. ft.

## MONTHLY BASE RATE

\$2,440 or \$2.05 PSF

## MONTHLY TRIPLE NET CHARGES

\$1,284 or \$1.07 SF

## LEASE TERM

3-5 year minimum lease term

## ZONING

R-M

## HVAC

Yes

## RESTROOM

In Suite/Common

## APN

027-270-028

## AVAILABLE

Now

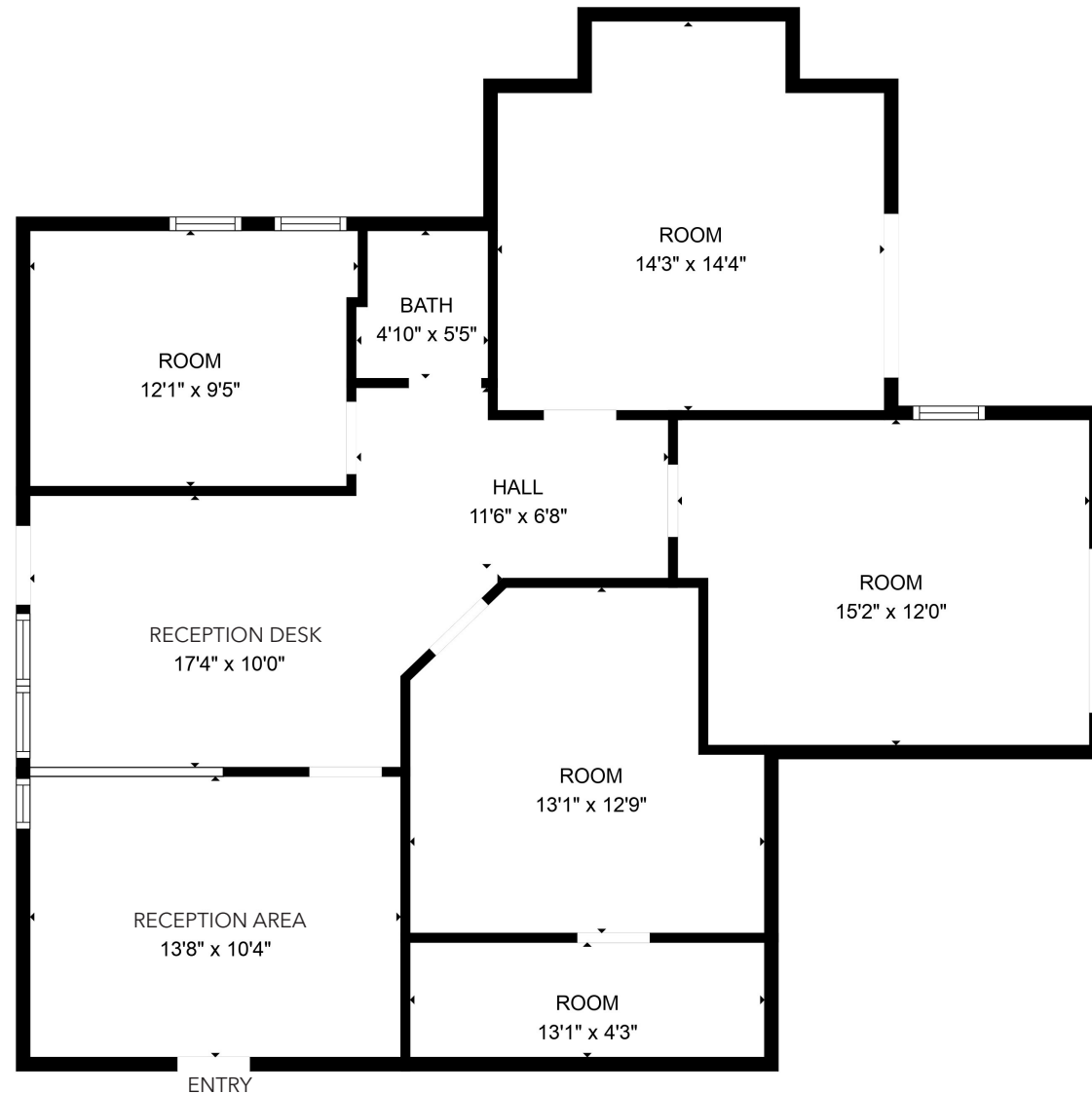


All information furnished regarding property for sale, rental or financing is from sources deemed reliable, but no warranty or representation is made to the accuracy thereof and same is submitted to errors, omissions, change of price, rental or other conditions prior to sale, lease or financing or withdrawal without notice. No liability of any kind is to be imposed on the broker herein.



All information furnished regarding property for sale, rental or financing is from sources deemed reliable, but no warranty or representation is made to the accuracy thereof and same is submitted to errors, omissions, change of price, rental or other conditions prior to sale, lease or financing or withdrawal without notice. No liability of any kind is to be imposed on the broker herein.

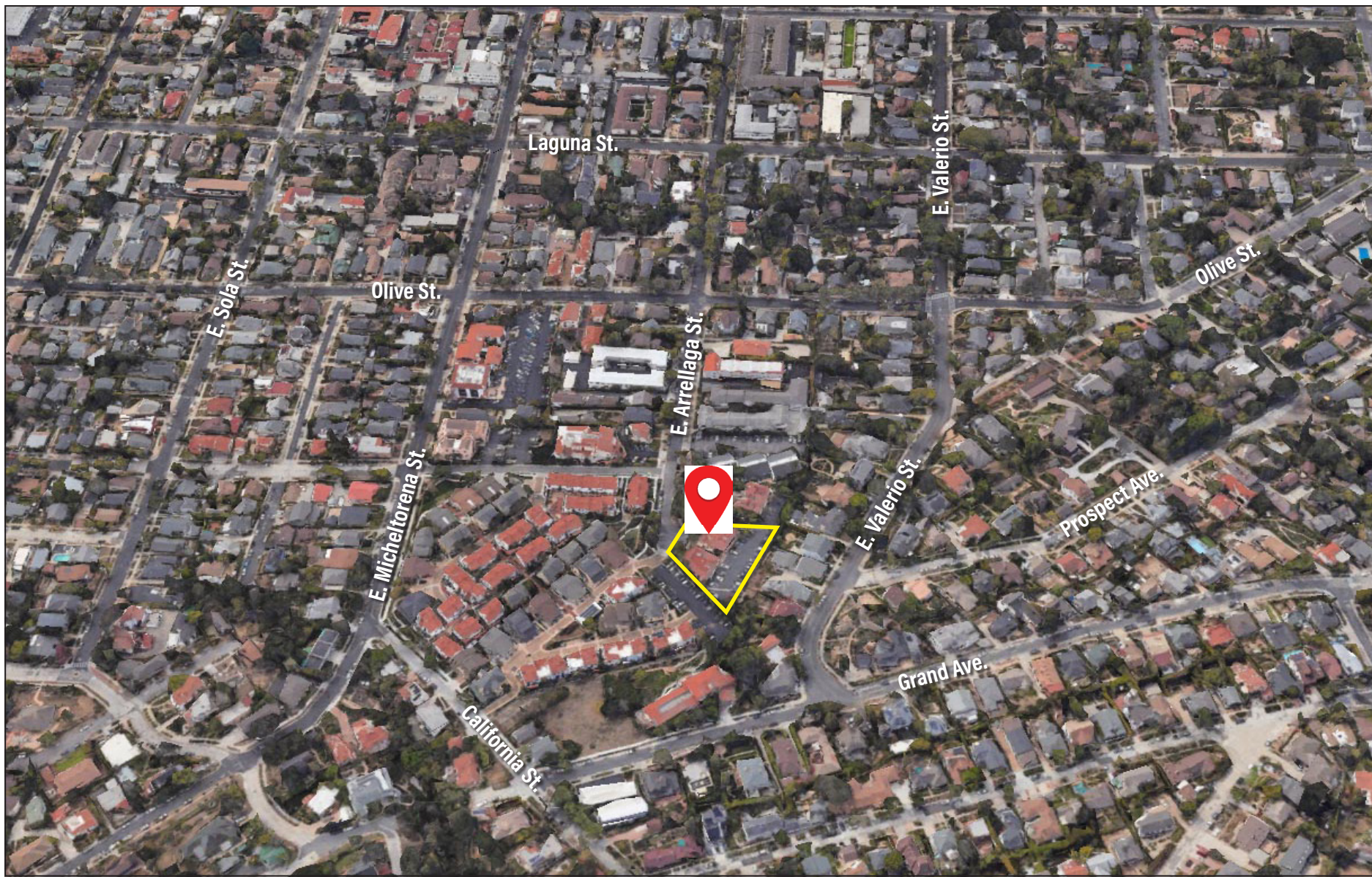
## FLOOR PLAN



All information furnished regarding property for sale, rental or financing is from sources deemed reliable, but no warranty or representation is made to the accuracy thereof and same is submitted to errors, omissions, change of price, rental or other conditions prior to sale, lease or financing or withdrawal without notice. No liability of any kind is to be imposed on the broker herein.



## LOCATION CITY OF SANTA BARBARA



All information furnished regarding property for sale, rental or financing is from sources deemed reliable, but no warranty or representation is made to the accuracy thereof and same is submitted to errors, omissions, change of price, rental or other conditions prior to sale, lease or financing or withdrawal without notice. No liability of any kind is to be imposed on the broker herein.





COMMERCIAL REAL ESTATE SERVICES

**LOCAL EXPERTISE. INTERNATIONAL REACH. WORLD CLASS.**

Lee & Associates, the largest broker-owned firm in North America, has been providing seamless, consistent execution and value-driven market-to-market services for our clients since 1979.

Our real estate services are tailored to exceed the needs of our local, national, and international clients by combining the latest technology, resources, and market intelligence with over 40 years of expertise to optimize results.

**CHRISTI VIOR**

805.895.8765  
cvior@lee-associates.com  
CalDRE: #0803953

**JIM TURNER**

805.724.0557  
jturner@JTrealstategroup.com  
CalDRE: #00970829

Central California, Inc. -  
Lee & Associates  
Corporate ID #02215506  
A Member of the Lee & Associates  
Group of Companies  
5401 Business Park South, Suite 122 & 123  
Bakersfield, CA 93309

All information furnished regarding property for sale, rental or financing is from sources deemed reliable, but no warranty or representation is made to the accuracy thereof and same is submitted to errors, omissions, change of price, rental or other conditions prior to sale, lease or financing or withdrawal without notice. No liability of any kind is to be imposed on the broker herein.



805.962.6700 | [lee-associates.com/centralca](http://lee-associates.com/centralca)



805.724.0557 | [jtrealstategroup.com](http://jtrealstategroup.com)

