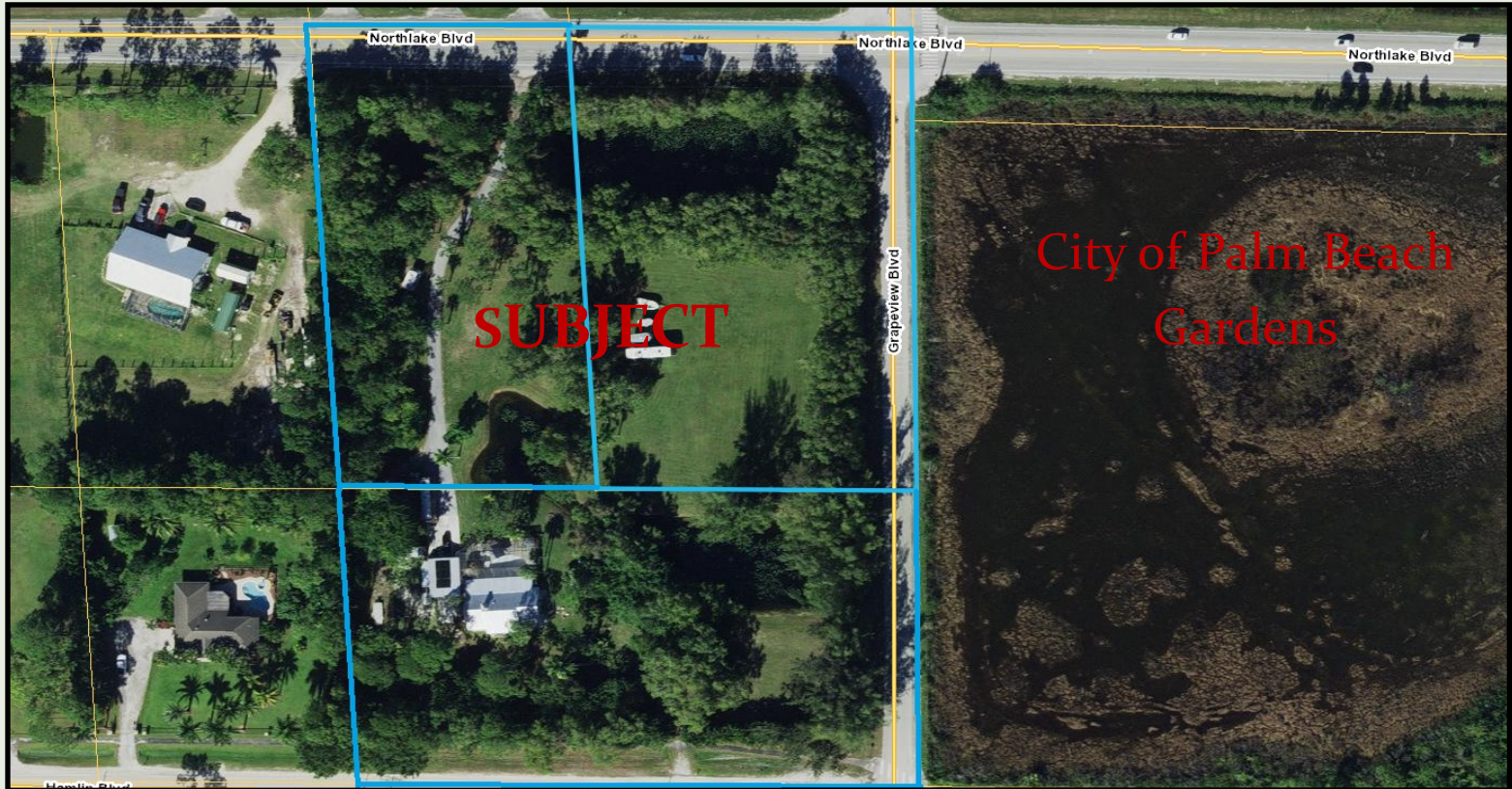
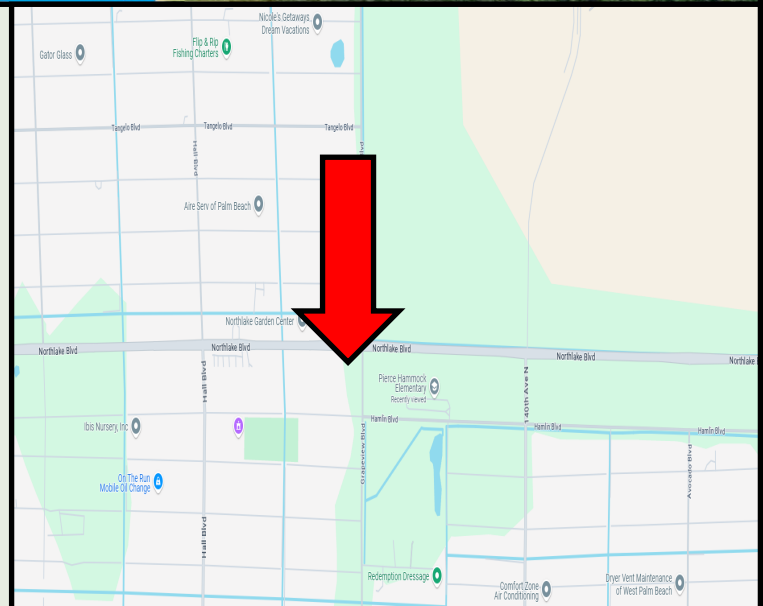


For Sale:

3 Parcels Totaling 6.88 acres - NWC of Northlake Blvd and Grapeview Blvd



- **NEC of Northlake Blvd. and Grapeview Blvd.**
- **6.88 Acres**
- **Corner Lot with Traffic Signal**
- **AR Zoned Palm Beach County with potential Commercial Land Use**
- **470 Feet of Frontage on Northlake Blvd and 620 Feet on Grapeview Blvd..**
- **Utilities Available to Site**
- **Price: \$5.5 Million**



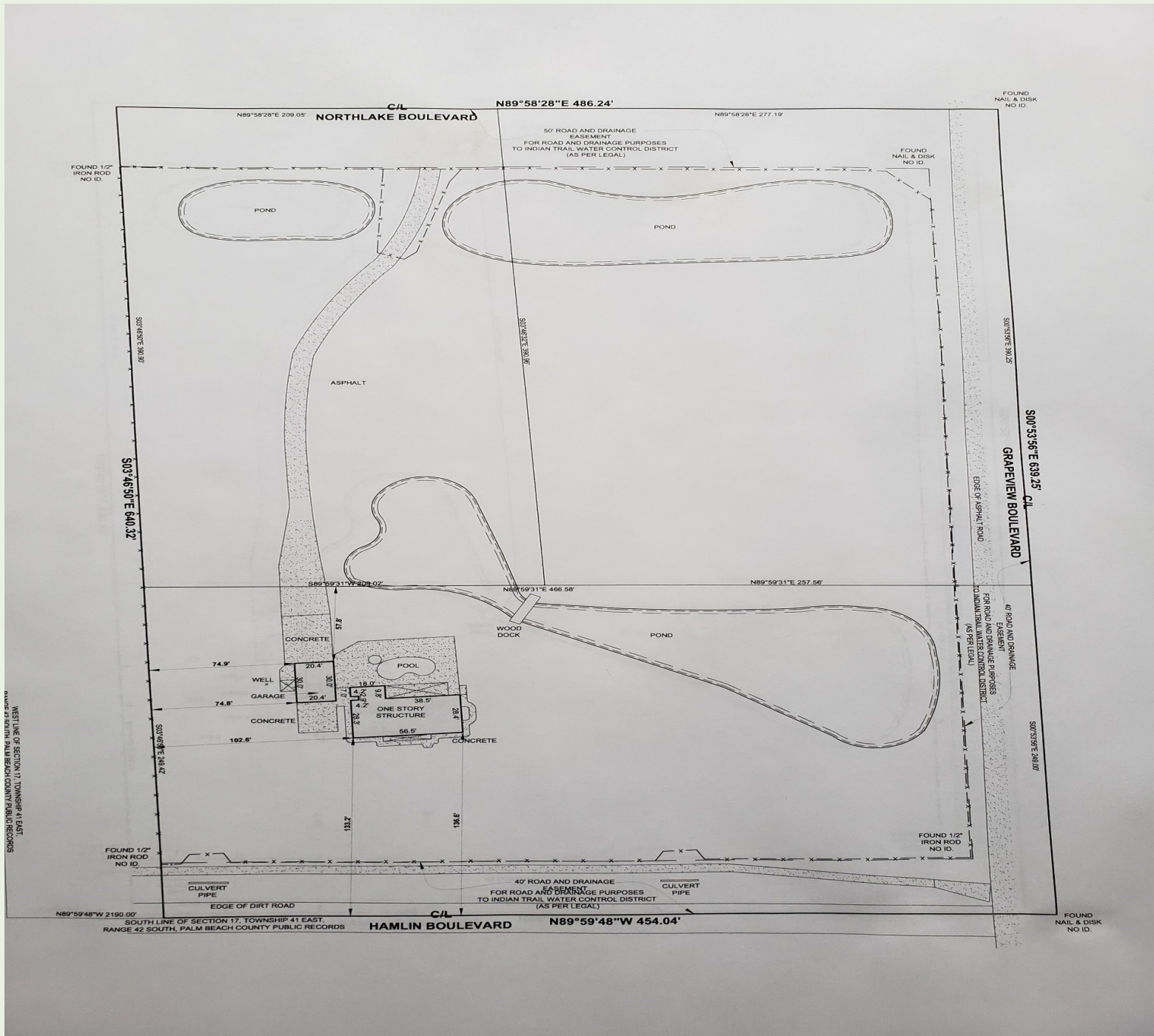
FOR MORE INFORMATION CONTACT:

CHRISTOPHER FLEMING- 561-707-5120
CFLEMING@STRATEGICREALTY.COM

STRATEGIC REALTY SERVICES, LLC
500 NORTHPOINT PARKWAY, SUITE 300
WEST PALM BEACH, FL. 33407
PH. 561-471-5353 FAX 561-471-5355
WWW.STRATEGICREALTY.COM

For Sale:

3 Parcels Totaling 6.88 acres - NWC of Northlake Blvd and Grapeview Blvd.



FOR MORE INFORMATION CONTACT:

CHRISTOPHER FLEMING - 561-707-5120
CFLEMING@STRATEGICREALTY.COM

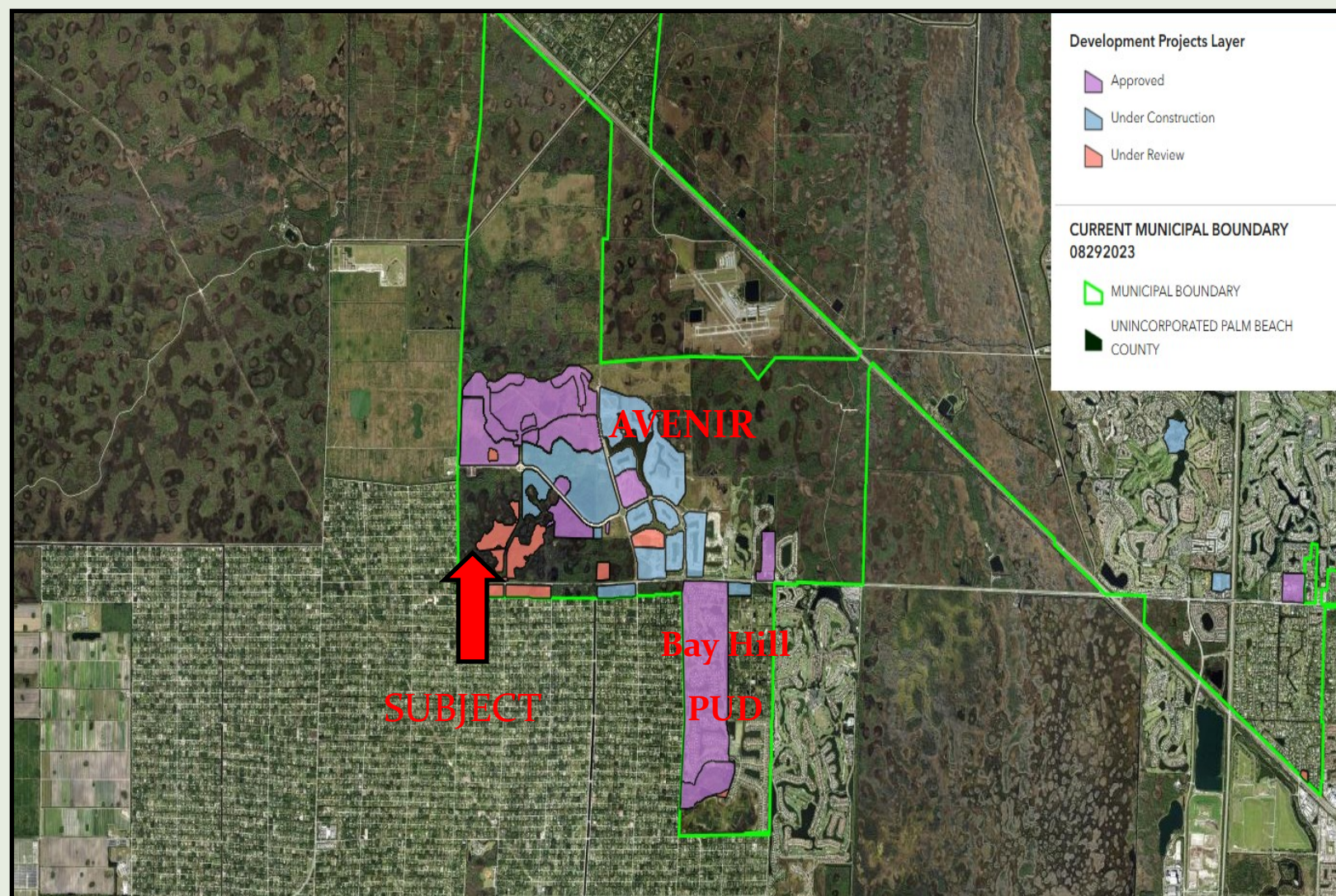
STRATEGIC REALTY SERVICES, LLC
500 NORTHPOINT PARKWAY, SUITE 300
WEST PALM BEACH, FL. 33407
PH. 561-471-5353 FAX 561-471-5355
WWW.STRATEGICREALTY.COM

For Sale:

**3 Parcels Totaling 6.88 acres - NWC of Northlake Blvd
and Grapeview Blvd**



Area Approved Projects



FOR MORE INFORMATION CONTACT:
CHRIS FLEMING- 561-707-5120
CFLEMING@STRATEGICREALTY.COM

STRATEGIC REALTY SERVICES, LLC
500 NORTHPOINT PARKWAY, SUITE 300
WEST PALM BEACH, FL. 33407
PH. 561-471-5353 FAX 561-471-5355
WWW.STRATEGICREALTY.COM