

# COMMERCIAL SPACE

5511 Princess Anne Road, Virginia Beach, VA 23462



**MARK RUSNAK**  
Associate Broker  
757.718.8865 (cell)  
757.490.7300 (office)  
markrusnak@remax.net  
<https://markrusnak.remax.com>  
License# 0225031965 VA

RE/MAX Allegiance

4000 Virginia Beach Blvd #164,  
Virginia Beach, VA 23452

RE/MAX, LLC is an Equal Opportunity Employer and supports the Fair Housing Act and equal opportunity housing.

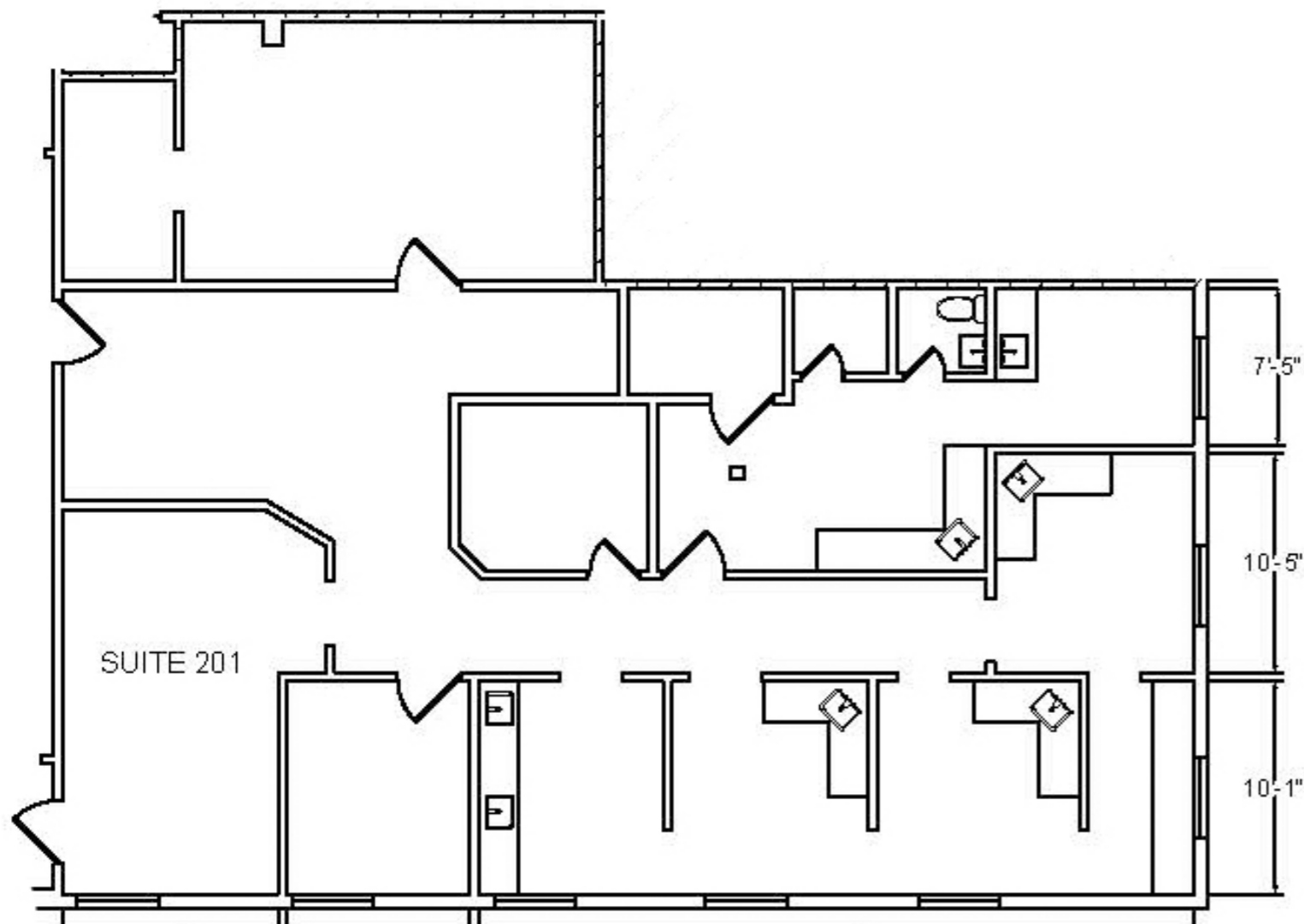
Each Office Independently Owned and Operated. 23\_394

## RE/MAX



Presented by **MARK RUSNAK**, Associate Broker

## RE/MAX Allegiance



**Offered at \$20 Per Sq Ft Per Year "Modified Gross" for a minimum of 3 Years. With an Optional Equipment Lease for All Equipment & Furnishings "As-Is" for an additional \$1,000. per month. Owners may also consider a short term lease "Gross Lease" for \$5,500 Month to Month - to include All Furniture & Equipment.**



### **Turnkey Dental Office Space with 4 Patient Chairs & Equipment**

**Executive Office & Medical Building in the Kempsville area, with High Traffic & Sign Exposure on Princess Anne Rd. & Easy Access to Two Parking Lots. Two Story Freestanding Building with Elevator. This space is Turnkey Dental Office with approximately 2,100 sq ft with 5 exam rooms with sinks & private ½ bathroom. Staff Administrative area, Dental Prep & Work Area, and Two private offices, Large Work Room & Employee Break Room. The equipment is negotiable, and consists of an x-ray machine 4 dental exam chairs, dental equipment & office furniture, all "As-Is"**

