



McNulty Group
Incorporated

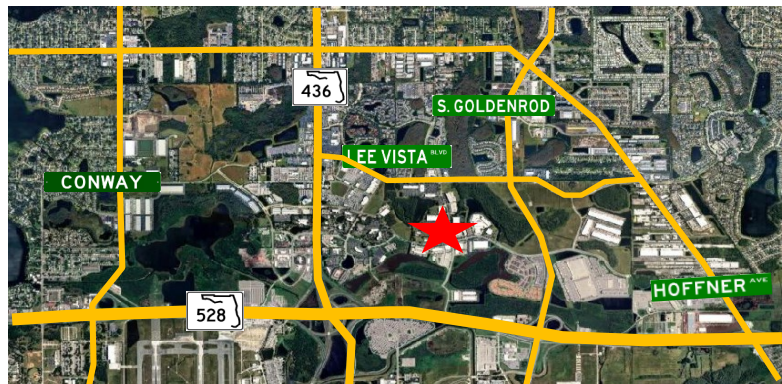
FOR SALE

6457 Hazeltine National Dr, Unit 165,
Orlando, FL 32822



Asking Price: \$1,450,000

Unit #165:	4,360 ± SF
Warehouse:	2,160 ± SF
Office:	1,100 ± SF
Mezzanine Office:	1,100 ± SF
Ceiling Height:	22'-24'
Doors:	(1) Grade 12' x 16'
Power:	3 Phase
Parking:	6 Reserved Sp.
Year Built:	2006



McNulty Group, Inc. is the agent of the Landlord or Seller of this property and will be paid by the Landlord or Seller. All information furnished with respect to the subject property has been obtained from sources deemed reliable. No representation as to accuracy thereof is made. This offering is subject to errors, omissions, prior sales or withdrawal without notice.

Chuck McNulty

Broker

Chuck@mcnultygroupinc.com
(407) 619-4245 Direct

McNulty Group Inc.

2315 Lynx Lane, Suite 6
Orlando, Florida 32804
407-532-3441



FOR SALE

6457 Hazeltine National Dr, Unit 165,
Orlando, FL 32822



Chuck McNulty

Broker

Chuck@mcnultygroupinc.com

(407) 619-4245 Direct

mcnultygroupinc.com

McNulty Group Inc.

2315 Lynx Lane, Suite 6

Orlando, Florida 32804

407-532-3441