

One Steele Plaza

Fayetteville, AR

3739 N Steele Blvd
Fayetteville, AR 72703
www.cbre.com/fayetteville

\$28.00/SF



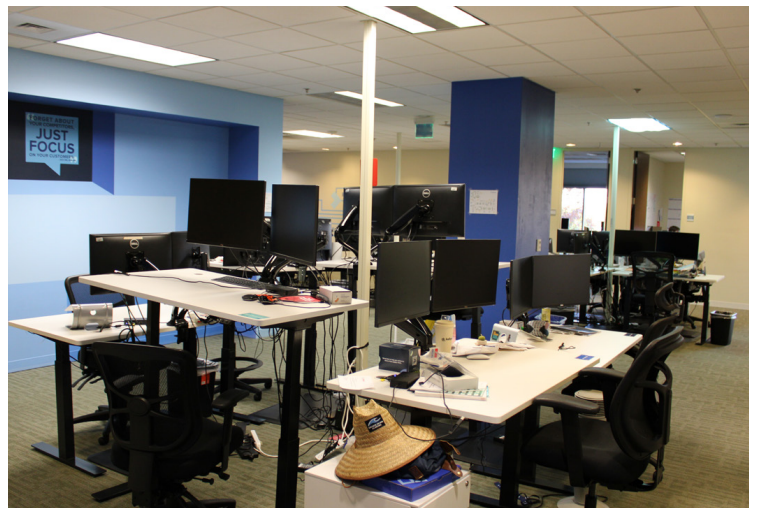
Office Space

3739 N Steele Blvd | Fayetteville, AR 72703

For Sublease

Property Highlights

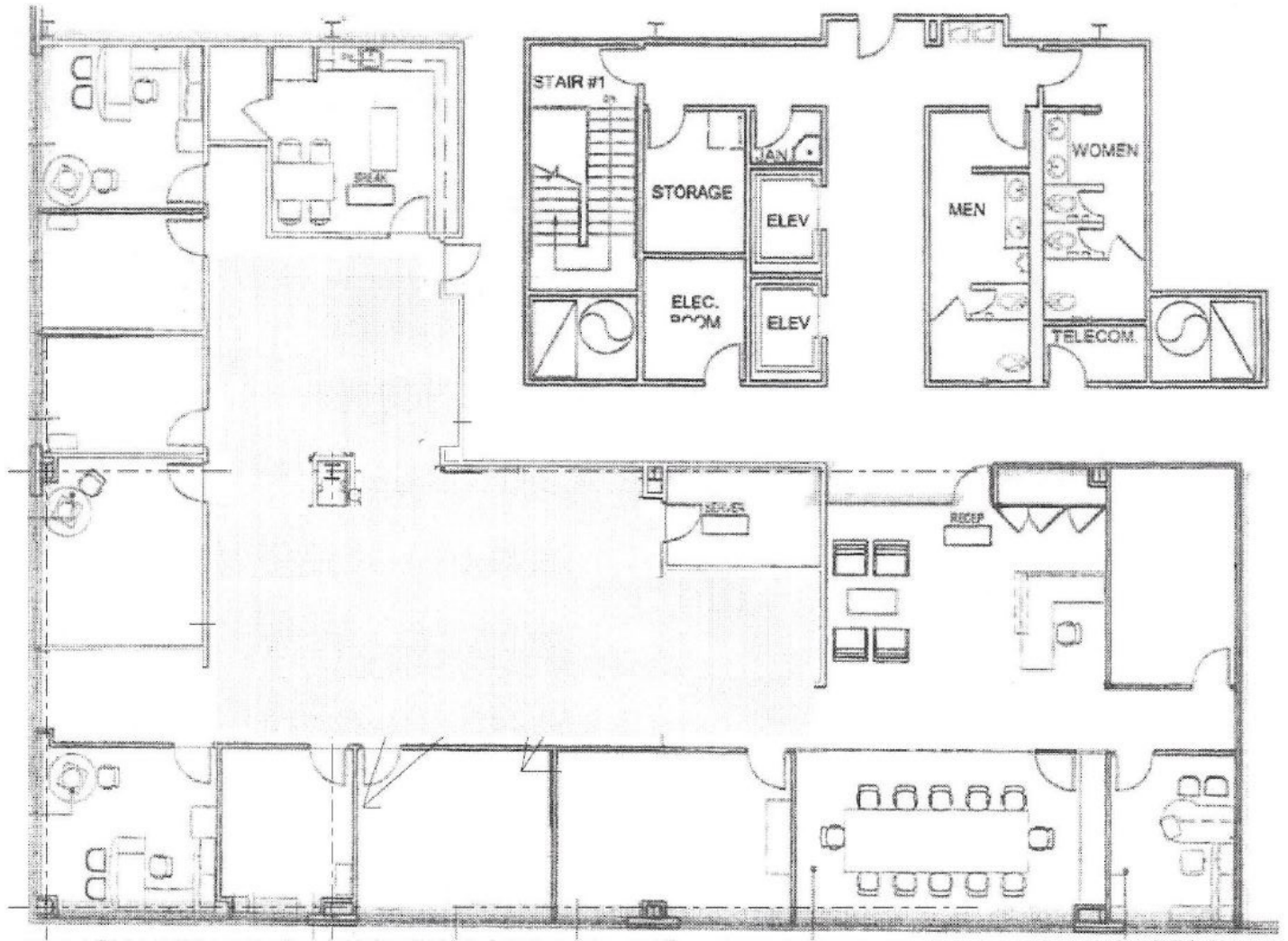
- + Availability: Suite 300
 - ±5,574 SF
 - 8 Offices
 - 3 Conference Rooms
 - ±14 Person
 - 8+ Person
 - 4+ Person
 - Lobby/Reception Area
 - Large Area for Work Stations
 - Large Kitchen/Break Area
 - Excess Parking Spaces Available
- + Sublease Through 2/28/2027
- + Price: \$28.00/SF (FS, Net Jan)
- + Prime Location in Uptown Fayetteville near NWA Mall, Target, JJ's Live & a multitude of food offerings.
- + Connectivity to the Razorback Greenway via the Mud Creek Trail



Office Space

3739 N Steele Blvd | Fayetteville, AR 72703

For Sublease



Contact Us

Hunter Groce

Senior Associate
+1 479 249 9520
hunter.groce@cbre.com

Alex Reed

Associate
+1 479 249 9560
alex.reed1@cbre.com

David Erstine, SIOR, CCIM

Senior Vice President
+1 479 301 2520
david.erstine@cbre.com

© 2025 CBRE, Inc. All rights reserved. This information has been obtained from sources believed reliable, but has not been verified for accuracy or completeness. You should conduct a careful, independent investigation of the property and verify all information. Any reliance on this information is solely at your own risk. CBRE and the CBRE logo are service marks of CBRE, Inc. All other marks displayed on this document are the property of their respective owners, and the use of such logos does not imply any affiliation with or endorsement of CBRE. Photos herein are the property of their respective owners. Use of these images without the express written consent of the owner is prohibited.