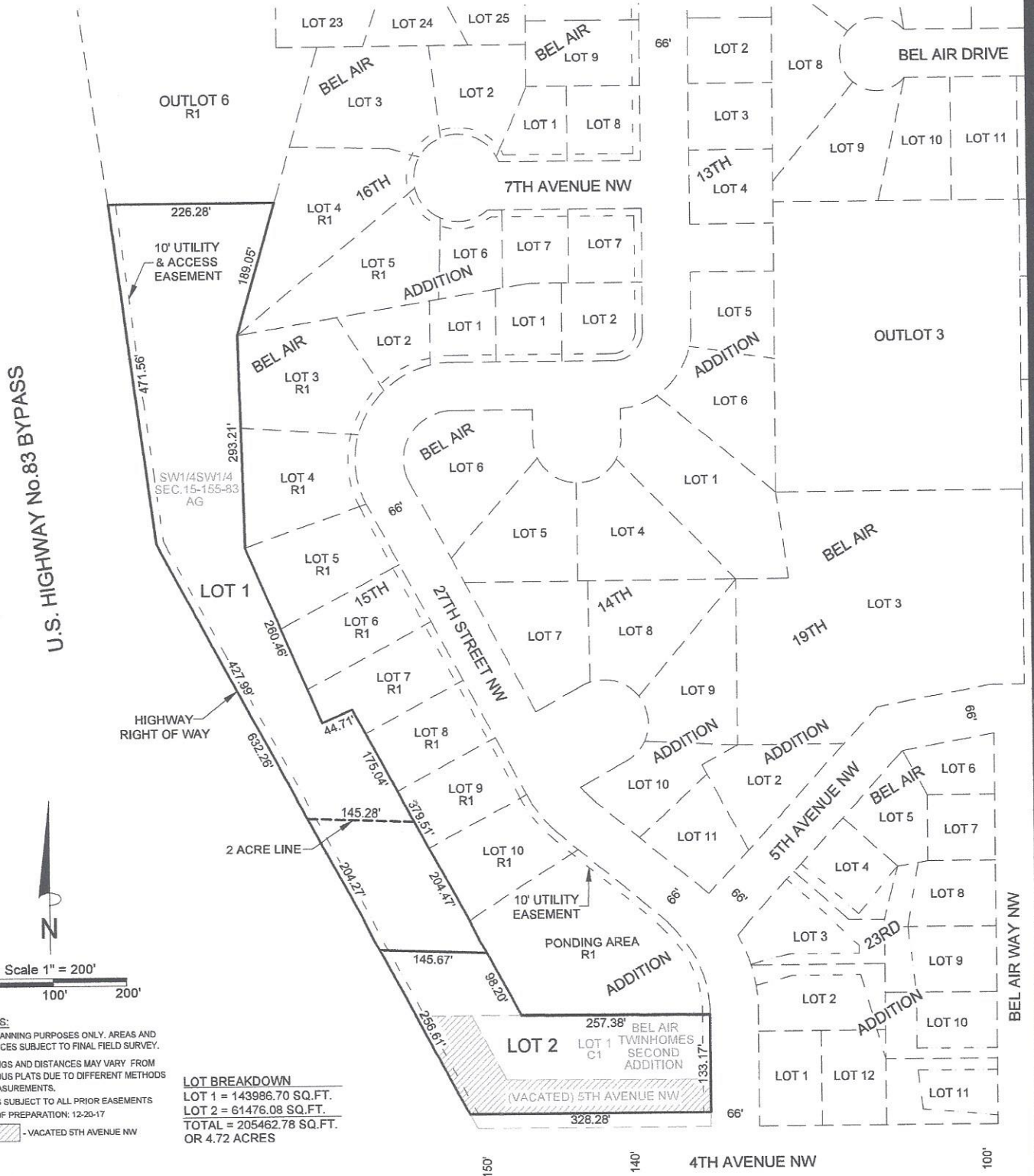




# PRELIMINARY PLAT OF BEL AIR COMMONS

TO THE CITY OF MINOT, NORTH DAKOTA

BEING LOT 1, BEL AIR TWINHOMES SECOND ADDITION AND A PORTION OF VACATED 5TH AVENUE NW  
TO THE CITY OF MINOT, NORTH DAKOTA AND REMAINING UNPLATTED PORTION OF THE SW1/4SW1/4,  
SECTION 15, TOWNSHIP 155 NORTH, RANGE 83 WEST, WARD COUNTY, NORTH DAKOTA



U.S. HIGHWAY No. 83 BYPASS



Scale 1" = 200'  
0 100' 200'

**NOTES:**  
FOR PLANNING PURPOSES ONLY. AREAS AND DISTANCES SUBJECT TO FINAL FIELD SURVEY.  
BEARINGS AND DISTANCES MAY VARY FROM PREVIOUS PLATS DUE TO DIFFERENT METHODS OF MEASUREMENTS.  
PLAT IS SUBJECT TO ALL PRIOR EASEMENTS  
DATE OF PREPARATION: 12-20-17  
- VACATED 5TH AVENUE NW

**LOT BREAKDOWN**  
LOT 1 = 143986.70 SQ.FT.  
LOT 2 = 61476.08 SQ.FT.  
TOTAL = 205462.78 SQ.FT.  
OR 4.72 ACRES

**ACKERMAN SURVEYING & ASSOCIATES**  
(701) 838-0786  
1907 17TH ST SE, MINOT, N.D. 58701



# PRELIMINARY PLAT OF BEL AIR COMMONS

TO THE CITY OF MINOT, NORTH DAKOTA

BEING LOT 1, BEL AIR TWINHOMES SECOND ADDITION AND A PORTION OF VACATED 5TH AVENUE NW TO THE CITY OF MINOT, NORTH DAKOTA AND REMAINING UNPLATTED PORTION OF THE SW1/4SW1/4, SECTION 15, TOWNSHIP 155 NORTH, RANGE 83 WEST, WARD COUNTY, NORTH DAKOTA



NOTES:  
FOR PLANNING PURPOSES ONLY. AREAS AND DISTANCES SUBJECT TO FINAL FIELD SURVEY.  
BEARINGS AND DISTANCES MAY VARY FROM PREVIOUS PLATS DUE TO DIFFERENT METHODS OF MEASUREMENTS.  
PLAT IS SUBJECT TO ALL PRIOR EASEMENTS  
DATE OF PREPARATION: 12-20-17

**LOT BREAKDOWN**  
LOT 1 = 143986.70 SQ.FT.  
LOT 2 = 61476.08 SQ.FT.  
TOTAL = 205462.78 SQ.FT.  
OR 4.72 ACRES



**ACKERMAN SURVEYING  
& ASSOCIATES**

(701) 838-0786  
1907 17TH ST SE, MINOT, N.D. 58701