



7509

SIX FORKS ROAD

FORMER MEDICAL
SPACE
FOR LEASE

BROKER

SKIPPER DAY

skipperday@yorkproperties.com
919.645.2769



EXCELLENT LOCATION

Near the intersection of Six Forks Road & Sawmill Road



EASY ACCESS

Ingress/Egress on Six Forks Road and Sawmill Road



LOCAL AMENITIES

Within walking distance to restaurants and shops



SIGNAGE OPPORTUNITY

Potential monument signage on Six Forks Road

york

ONLINE

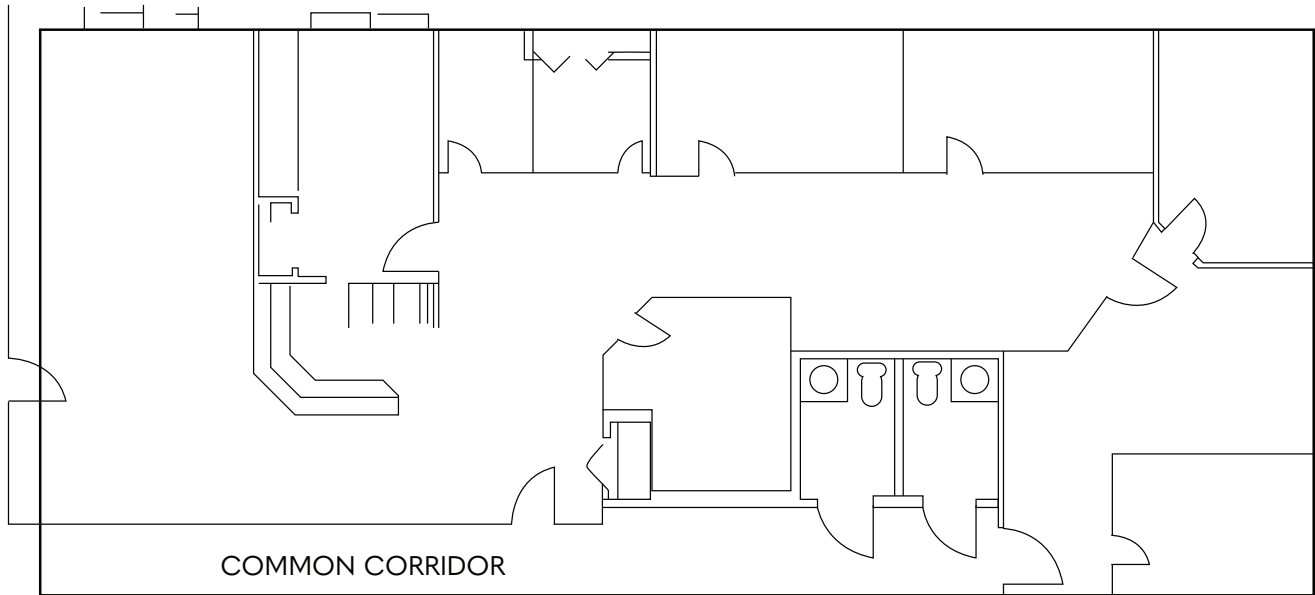
www.yorkproperties.com · [@yorkproperties1](https://www.instagram.com/yorkproperties1)

ADDRESS

2108 Clark Avenue, Raleigh, NC 27605

7509

SIX FORKS ROAD



Floor plan and other information shown are subject to change without notice and may not be accurate.

PROPERTY HIGHLIGHTS

- Reception area with check in and check out counter
- Potential lab area with plumbing and cabinets
- Two common restrooms and one internal restroom
- Three OP rooms with plumbing and cabinets
- One office
- Break room

±2,152 RSF

SIZE

NOW

AVAILABILITY

Contact Broker

LEASE RATE



SKIPPER DAY

skipperday@yorkproperties.com

919.645.2769





540

HARVEST PLAZA SHOPPING CENTER

- | | |
|--------------------------|------------------|
| Rockin Rolls Sushi | Lowes Foods |
| Zaxby's | Brueggers Bagels |
| Goodberrys Custard | Planet Fitness |
| Precision Tune Auto Care | Wells Fargo |
| Mimosas Nail Bar | |

SIX FORKS STATION SHOPPING CENTER

- Hobby Lobby
- Food Lion
- Home Depot
- Target
- Ton Noodles
- Triange Cinemas
- PetSmart
- Chic-Fil-A

STRICKLAND RD

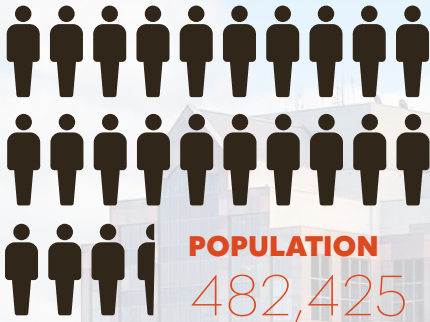
SIX FORKS RD

7509 SIX FORKS RD

CELEBRATION SHOPPING CENTER

- | | |
|----------------|----------------------|
| Wine & Design | KimDry Cleaners |
| Dominos Pizza | Clean Eatz |
| McDonalds | Village Dental |
| UPS Store | Pho Sure |
| Dollar General | Cryo Lab Face & Body |
| Starbucks | British Swim School |

RALEIGH CITY PROFILE



ACCOLADES

#1 BEST PERFORMING CITY FOR ECONOMIC GROWTH
Milken Institute · 2025

#3 BEST STATE CAPITAL TO LIVE IN
WalletHub · 2025

#3 FASTEST GROWING CITY FOR CONSTRUCTION
CoreLogic · 2025

#1 BEST PERFORMING LARGE METRO AREA
Milken Institute · 2025