

PMF Real Estate Services is pleased to present:

FOR LEASE

MARKETPLACE BUILDING

10027-10029 Main Street, Bothell, WA 98011

CONTENTS: 2 Dimensioned Plan | 3 Space Plan | 4 Aerial Map



High-Exposure Downtown Bothell Retail

- 6,875sf retail/office building (4,471sf main floor)
- Building & pylon signage exposure to Main St
- 43 dedicated parking stalls plus street parking and ample employee parking in downtown
- 1,055 NEW University of Washington Student Housing units under construction ~2,500ft away
- Abutting SR-522 (50,000vpd) with signage opp., ~3,000ft from University of Washington Bothell and Cascadia College joint campuses with ~10,000 students enrolled & ~1,000 staff/faculty



PMF REAL ESTATE SERVICES
a PMF Investments Company

Brian Franklin, President

brian@pmfinvestments.com

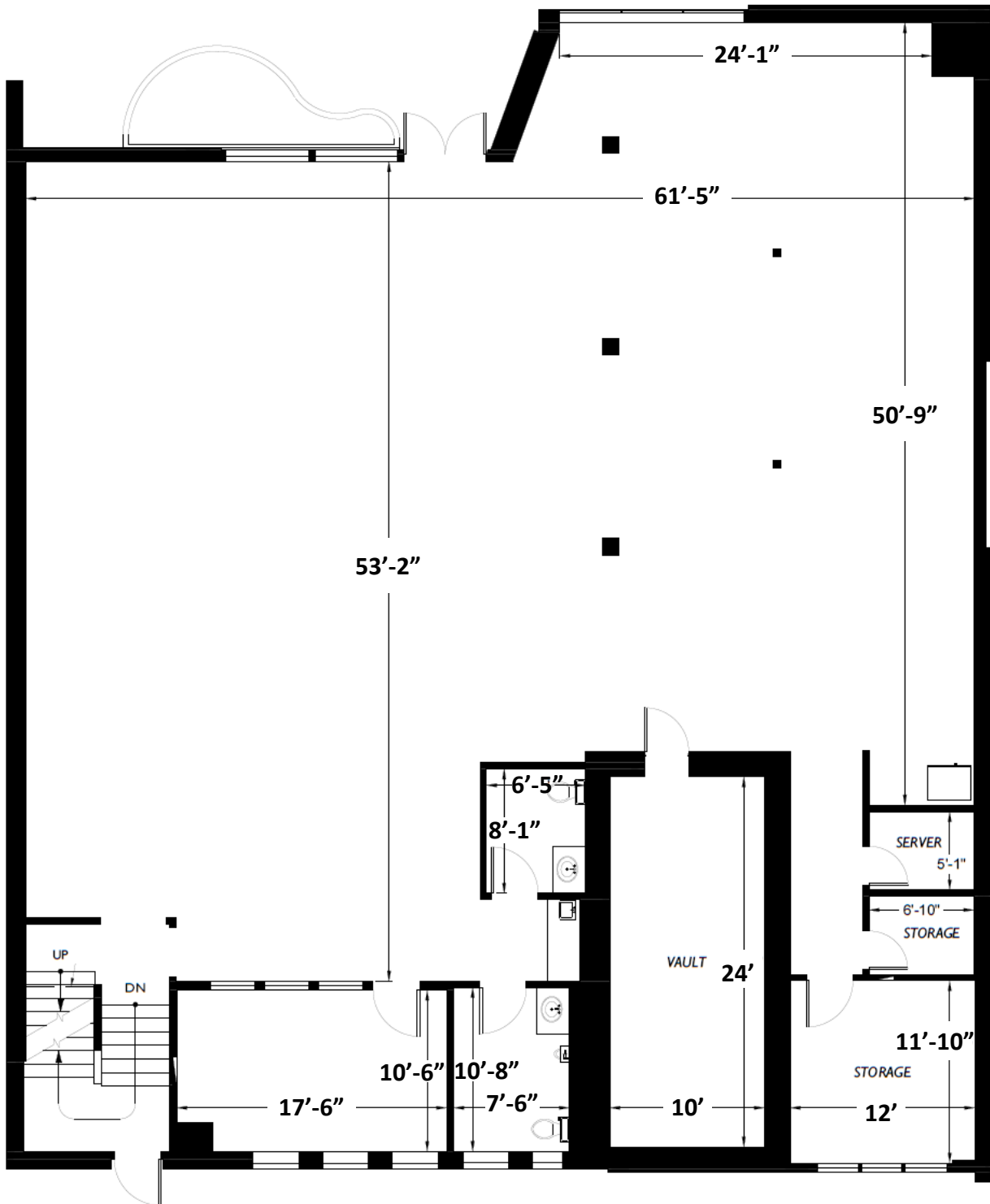
Timothy Jackson, EVP

tim@pmfinvestments.com

The information contained herein has been obtained from sources deemed to be reliable, however PMF Investments makes no warranties or representations to its accuracy. All information should be independently verified by prospective tenants and/or their representatives.

MARKETPLACE BUILDING

Dimensioned Plan



PMF REAL ESTATE SERVICES
a PMF Investments Company

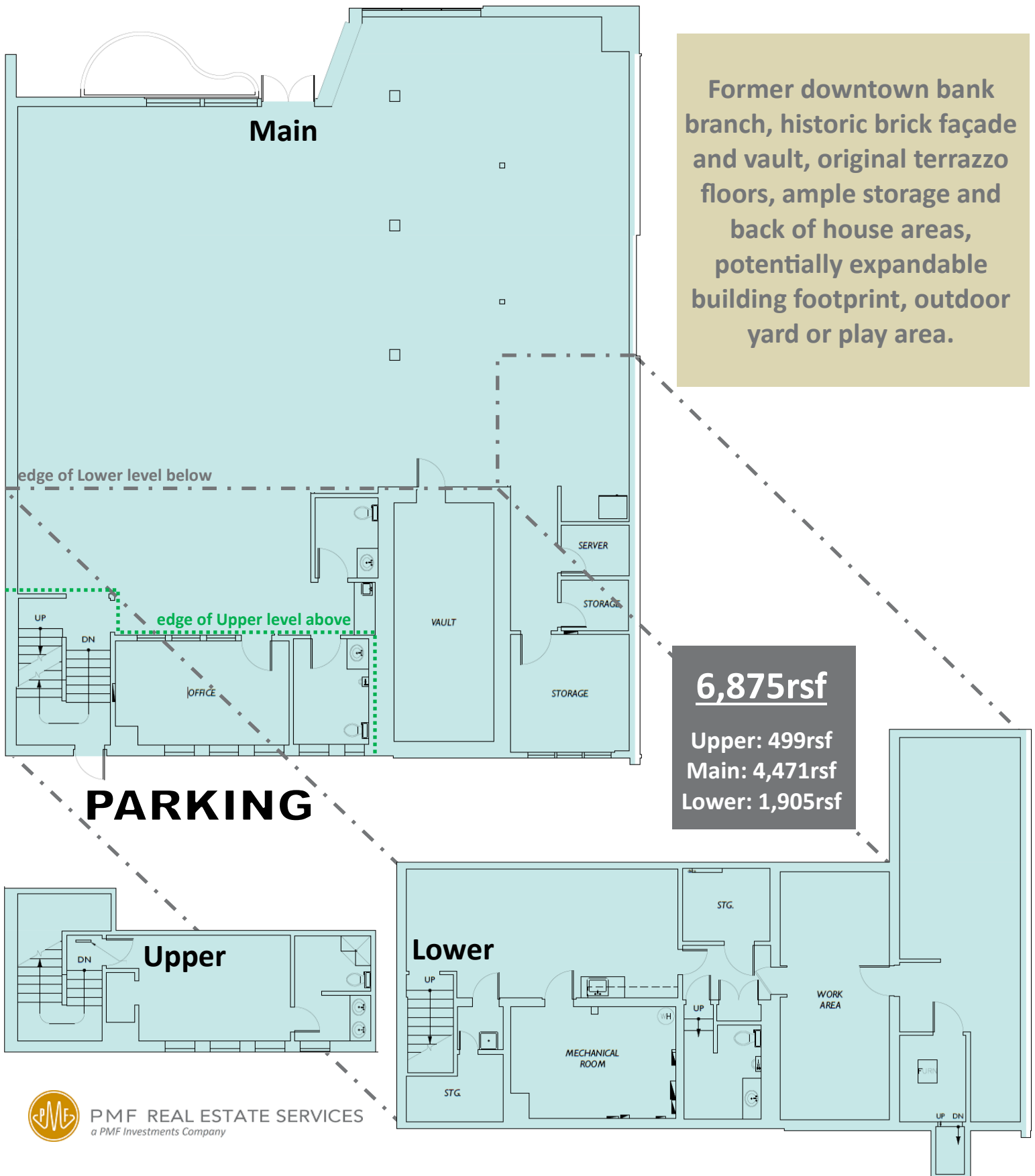
Brian Franklin, President brian@pmfinvestments.com 425-746-6066
Timothy Jackson, EVP tim@pmfinvestments.com 425-746-6066

The information contained herein has been obtained from sources deemed to be reliable, however PMF Investments makes no warranties or representations to its accuracy. All information should be independently verified by prospective tenants and/or their representatives.

MARKETPLACE BUILDING

Space Plan

Former downtown bank branch, historic brick façade and vault, original terrazzo floors, ample storage and back of house areas, potentially expandable building footprint, outdoor yard or play area.



6,875rsf

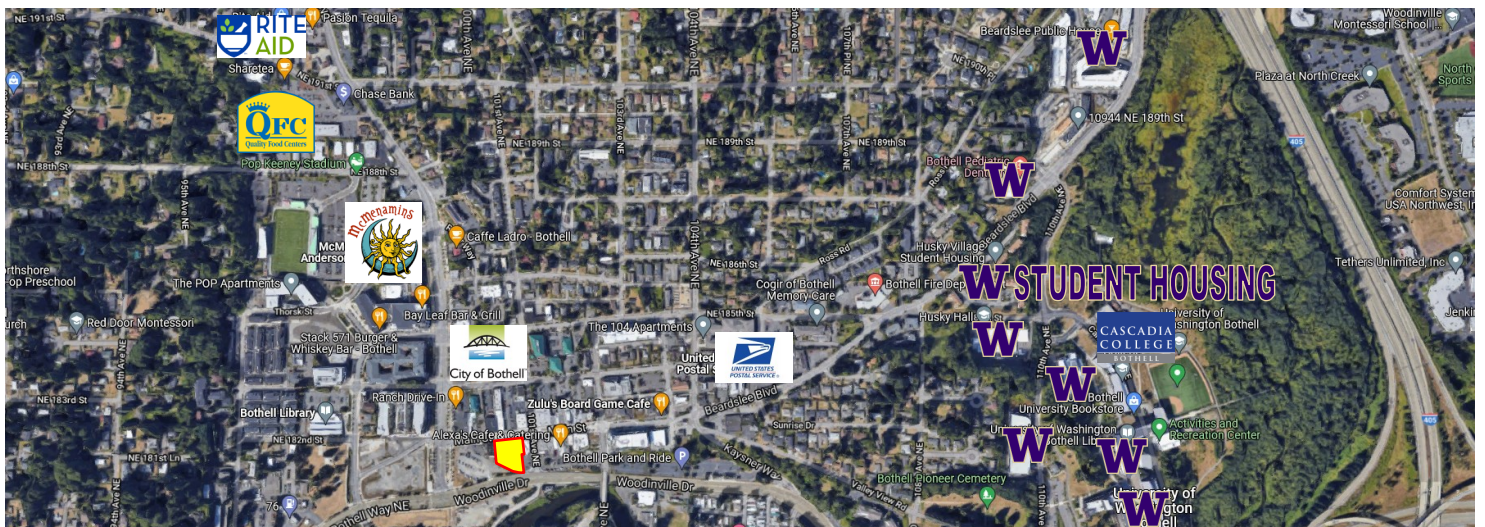
Upper: 499rsf
Main: 4,471rsf
Lower: 1,905rsf



PMF REAL ESTATE SERVICES
a PMF Investments Company

MARKETPLACE BUILDING

Aerial Map



Brian Franklin, President brian@pmfinvestments.com 425-746-6066
 Timothy Jackson, EVP tim@pmfinvestments.com 425-746-6066

The information contained herein has been obtained from sources deemed to be reliable, however PMF Investments makes no warranties or representations to its accuracy. All information should be independently verified by prospective tenants and/or their representatives.